

SOURCE: Record of County Surveyor

Vol. C P. 42 yr. 1854

TRANSCRIBED from ~~ORIGINAL~~
DUPLICATE

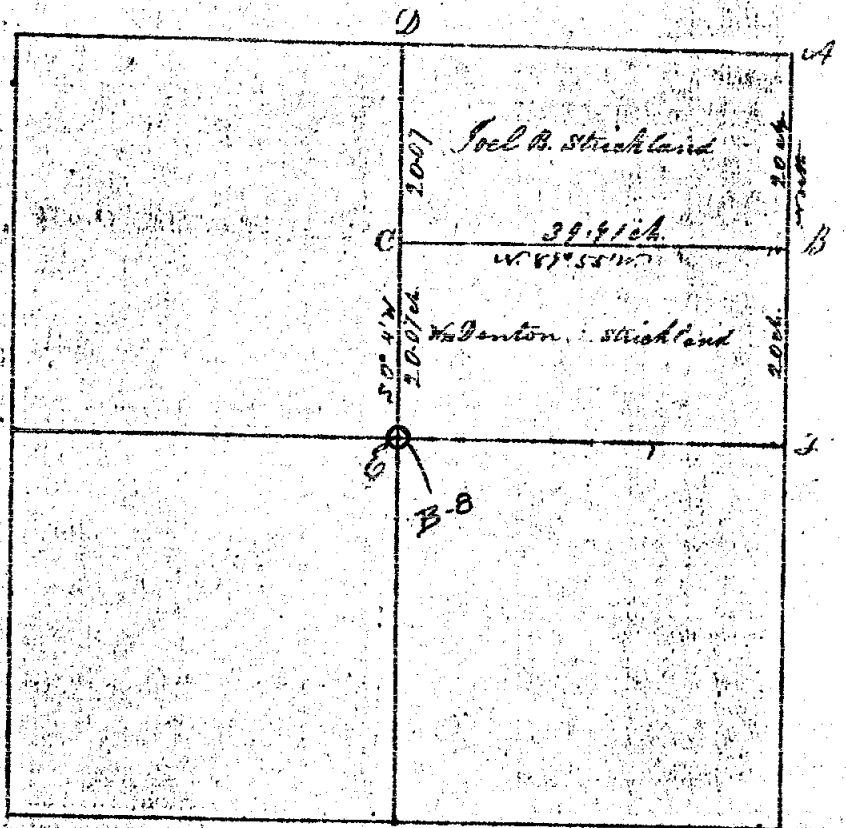
on file at Remuneration Office

42 - N. 46. Section 19 T. 3 N. R. 1 W. Ala. 1000

- A to F South 40 ch. Var 0
- B to G West 39.4 ch. Var. 5.6 ch.
- D to E South 40.14 ch. Var. 0.5 ch.
- ⓪ E North 6 in. at 27° E. 18 1/2 ch.
- ⓪ E Lynn 12 in. S 74° W. 14 1/2 ch.

Note - The corner B, was set by A. Jackson

- A. Stone in ground - trees gone
- B. Stone in ground - trees
- C Post: no marks recorded
- D. Post - trees gone



Run by the true Meridian variation 3° E.
 Surveyed for Joel B. and William D. Strickland Nov. 11th 1854
 By Thomas L. Brown

MISC.

C-7

Survey of E 1/4 of NW 1/4 Sec 20 N
Abolition for Mrs. C.H. Dr. Lewis
& others

Commencing at N.W. cor. Sec 20
Q.P.P. stone table for Supr. S. 45 1/4 W
63 1/2 E. of least 24 1/4 W 123 E.
Thence east 4000 & south west 1/4
1/4 post of Sec 20 to meet S. 1/4 E.
cor. Sec 20 Q.P.P. a stone for Elm 12
N. 1/4 W 92 1/2 and thence west-south
west post a stone which was also
found and by bearing and more
surveyed located the base of the
1/4 post and found the angle of the
stone & post to be quick return and
The corner for Aug. 1. 1894. 123 1/2 E
& N.E. cor. base and 8 63 1/2 W 134 1/2 E
Thence west 4015 - at S. 1/4 W. cor
Sec 20 Post on true line 20 1/4 E
at east post - then post of block at
N. side of block for 2000 10 N-W 83 1/4
& Elm 16 1. 10 W 54 1/2 E
Thence 8 1/2 E 4035 1/2 at S post
1st post - Q.P.P. a white stone in center
of road running west in line with
green running north and 24 E. west
of west road fence running south
two witnesses
At 2522 at south from 43 cor
of W 1/4 of NW 1/4 Sec 20 on lot line
Post - Post - from corner between
N 1/4 & south 1/4 of NW 1/4 of NW Sec 20
two witnesses. 1 August 20. 0
A. Snow & B. Kings. Surveyors
Apr. 10, 1894

3. Survey certificate that on the 10th day of April
1894 a new table was set in the corner
mentioned in the above survey
Q.P.P. Stone
Sgt. County Surveyor

Survey on E 1/4 of N 1/4 Sec 18
Abolition for J. Tyler

Commencing at S.W. corner
E 1/4 of N 1/4 Sec 18 Q.P.P. S. 1/4 W 9. 1/4 E
2 1/4 post stone for post - two witnesses
2 Post 4000 at S 1/4 W corner of sec
and Q.P.P. a marked stone in the
center of road, the witnesses
found post in west line of road
found 2250 at east long post
stone for the N. 1/4 S. 1/4 corner and the
between the N. 1/4 S. 1/4 Sec 18
3. Survey of N. 1/4 of NW 1/4 Sec 18
corner in the east line of Sec 18
which had heretofore been set at
a corner between said
also found. This is a small
with the table around it - and also in
the center of a 3rd road.
On the false line between said
corners a post was set at
west 500 stone
J. Kippie & James Chalmers
J. Tyler
Meyers Dec. 0
Apr. 15 1894

3. Survey certificate that on the 13th
day of April 1894 I surveyed the
above land marked the corner
mentioned in the above survey
Q.P.P. Stone
Sgt. County Surveyor

146 Alaidon Township

State Road.

May 8, 1848.

Begin & line of T 3 N. R. 1 W. at the termination of road and in the township of Perry, running thence N 46 1/2 W 311 rods to the E. line of the township of Adair. Or else distance in the township of Alaidon 311 rods to the

Law 30 E.

A Jackson, & Son.

Highway & Cleared State Road

Feb 23, 1849
 Beg at a stake in township Madison near 1/40 post of Sec. 13 T 3 N. R. 1 W. and at termination of State Road through Westfield, and part of stake of Sugar 24 N 43 1/4 E 52 lbs
 Runnidge N 40 N. 110 ch any.
 Head outlet of Peck Lake
 Thence N 12 W 6 poles across outlet of Lake, and
 Swampy Lake 16 N 66 E 49 lbs.
 Thence N 80 W 57. 10 chs any.
 Reeds 22 N 80 E 52 lbs
 Thence N 55 W 27. 74 chs any post-
 W Oak 40 N 55 1/2 E 1.04 chs.
 Thence N. 41. 27 chs. terminating in N line of Alaidon & 10 chs E. of S. 1/4 post-
 of Sec 31 of T 4 N. R. 1 W.
 Law 30 E.

T. Pearce, Surr. Det. Sur.

Alaidon Township

Alteration C-7

Survey of an alteration. The Highway by. of the corner of Sec. 17, 18, 19 & 20 T. 3 N. R. 1 W. S. 80° 45' E 160.16 chs
 Runnidge thence to the corner of sections 15, 16, 21 & 22 to the corner of Range straddled, being a straight line between the corners. Again specific without regard to the section lines.

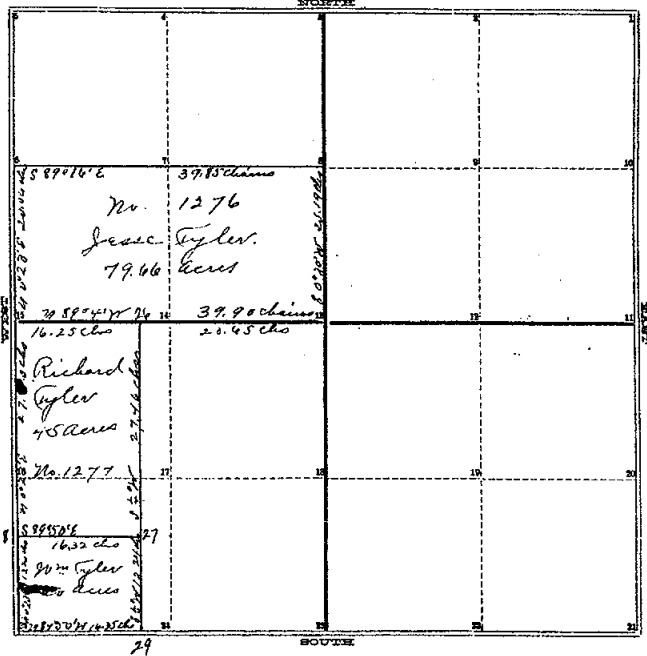
July 5, 1858

J. Brown, & Son.

BK2-58

COUNTY SURVEYOR'S RECORD,
TOWN Three NORTH, RANGE One East, MERIDIAN OF MICHIGAN.

SEC. 17



TOWN _____ NORTH, RANGE _____, MERIDIAN OF MICHIGAN.

- 1
- 2
- 3
- 4
- 5
- 6
- 7
- 8
- 9
- 10
- 11
- 12
- 13
- 14
- 15
- 16
- 17
- 18
- 19
- 20

24
26

INGHAM COUNTY, MICHIGAN.

TOWN Three NORTH, RANGE One West., MERIDIAN OF MICHIGAN.

Survey of the north west quarter and the west part of the South west quarter of section No 36 in township No. Three North of Range No. One West. Beginning at 15" the quarter post in the west line of the section see the accompanying plat and references to corners in the following notes:

1" 1/2 post in center of Road No. 1	N 33 1/2 W 5 1/2 chs	to Sugar in the diam	S 59 1/2 W 7 1/2 chs
1" 1/2 post in drain beam	N 51 E 1 1/2 chs	to " "	N 20 E 2 1/2 "
10" 1/2 post in " "	N 21 1/2 E 1 1/2 "	to " "	N 62 E 4 1/2 "
" " " "	S 14 1/2 E 1 1/2 "	to " "	N 79 1/2 W 4 1/2 "

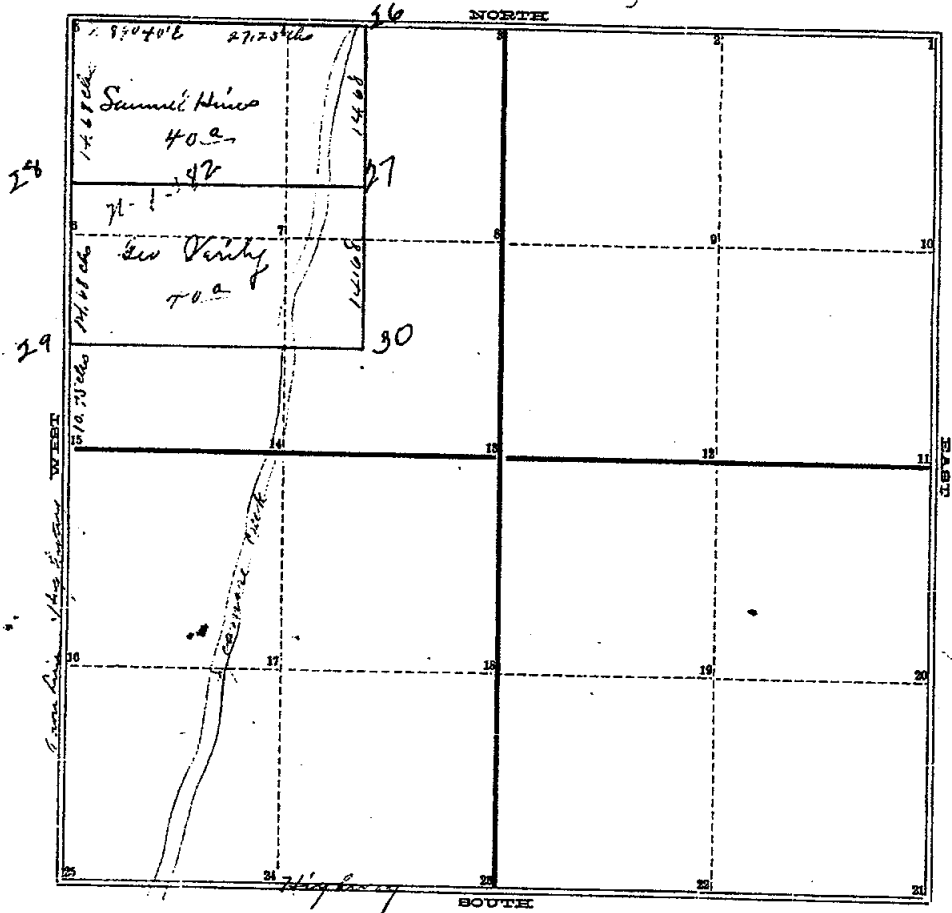
25" 1/2 post in center of Road No. 1
 27" 1/2 post. No bearing trees.
 29" 1/2 post down with the surface No bearing trees 25" 1/2 a stone below the surface with picks under, over or around it. Bird running thence south twenty three minutes east on the west line of said section twenty chains and six links to 16" 1/2 a post mid way between the quarter post and section corner. Thence south eighty nine and one fourth degrees east on the division line thirty nine chains and eight links to 8" 1/2 a post in the north & south quarter line thence south half a degree west on said quarter line twenty chains sixteen links to 13" 1/2 a post in the east and west quarter line thence north eighty nine degrees and four minutes west on said east and west line 23.68 chains to 26" 1/2 a post and continuing the same bearings on the quarter line 16.73 chains to 15" 1/2 the quarter post in the west line of the section. Thence from 26" 1/2 south one fourth of a degree east twenty seven chains and forty six links to 27" 1/2 a post thence continuing the same bearings twelve chains and twenty four links to 29" 1/2 a post in the south line of the section thence north eighty nine degrees and fifty minutes west on said south line sixteen chains and thirty four links to 25" 1/2 the south west corner of the section. Thence north twenty three minutes east on the west line of the section 12.78 chains to 24" 1/2 and set post. Thence continuing on said west line & same bearings 27.83 chains to the place of beginning. Also the line 28" 1/2 27" 1/2 was run parallel to 25" 1/2 29" 1/2 cutting off 20 acres south of 28" 1/2 27" 1/2 Run by the true Meridian Variation 2 1/2 E Surveyed for for Jesse, Richard, and Wm Tyler Apr 17, 1868 & Recorded Nov 9th 1868 by T. J. Brown, Dep. Co. Surv., Ing. Co., Mich.

91

BK 2

COUNTY SURVEYOR'S RECORD,
 TOWN Three NORTH, RANGE One West, MERIDIAN OF MICHIGAN.

SEC. 18



TOWN _____ NORTH, RANGE _____, MERIDIAN OF MICHIGAN.

- 1
- 2
- 3
- 4
- 5
- 6
- 7
- 8
- 9

24

28

INGHAM COUNTY, MICHIGAN.

TOWN Three NORTH, RANGE One East, MERIDIAN OF MICHIGAN.

Survey of the north west fractional quarter of section No Eighteen in Township No Three North of Range No One East as represented in the accompanying plat drawn to a scale of fourteen chains to one inch, in which plat the bearings and distances of the lines (run); the names of owners, the numbers of acres owned by each; letters of reference to lines and corners, the positions of roads & stream ~~are~~ are respectively given.

The corners are described as follows.

- (5) a post from which a stone monument bears South 60 links
- (26) " " in the center of Road No witnesses marked.
- (27) Post not set on account of high water.
- (28) A post also in center of road. No witnesses marked
- (29) A post from which a N. line 20 m chain bears N 55 20 44 links
- (30) " " No trees.

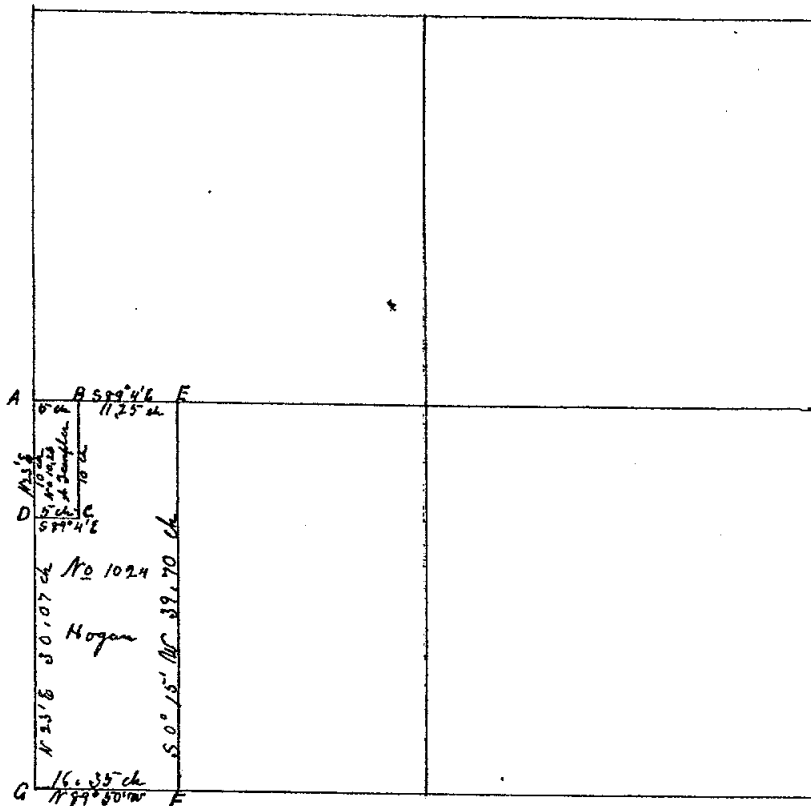
Run by the true Meridian Variation 155' East
Surveyed Mar 15th 1873, by T. J. Brown, Co. Surveyor, for Ingham, Mich.

3-147

COUNTY SURVEYOR'S RECORD

TOWN Three NORTH, RANGE One West, MERIDIAN OF MICHIGAN.

Section 17



Chas. Brown
Dewitt Miller & Son
W. Hogan & Son

Born by the true Meridian $N 2^{\circ} 4' E$
Recorded Jan 16th 1868 by J. J. Brown Co. Surveyor Ing. Co.

9526 Vol 2

TOWN Three NORTH, RANGE One West, MERIDIAN OF MICHIGAN.

- 1
- 2
- 3
- 4
- 5
- 6
- 7
- 8
- 9
- 10

24

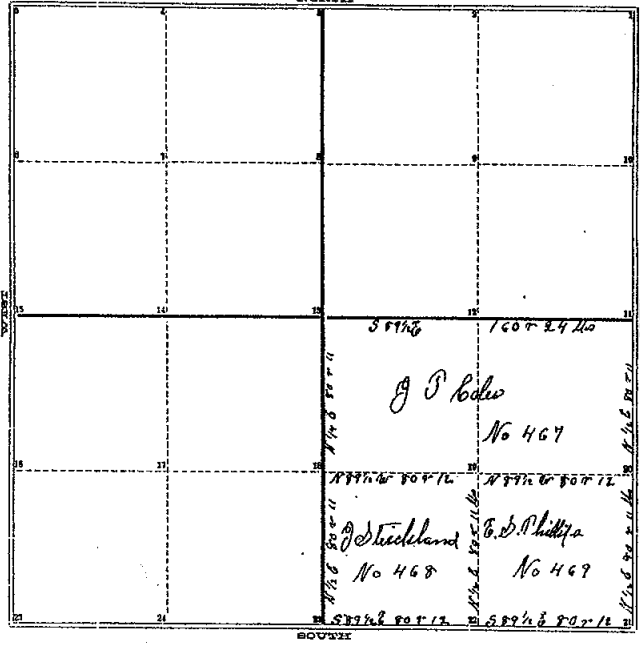
25

- A Post Driven to the surface of ground trees gone
- B R Oak 18 S 88° W 5 1/2 No W Stake N 88 E 28 ft
- C Stone set in ground even with surface
- D Post driven even with surface No trees marked
- E Post No trees marked
- F Stone set in ground even with surface
- G Stone set in ground even with surface

4-211

COUNTY SURVEYOR'S RECORD,
TOWN Shew NORTH, RANGE One West, MERIDIAN OF MICHIGAN.

SEC. 18



P. 112 1/2

TOWN Shew NORTH, RANGE One West, MERIDIAN OF MICHIGAN.

- 1
- 2
- 3
- 4
- 5
- 6
- 7
- 8
- 9
- 10
- 11
- 12
- 13
- 14
- 15
- 16
- 17
- 18
- 19
- 20
- 21
- 22
- 23

TOWN Shew NORTH, RANGE One West, M.

Run by the True Meridian (Per 3° &
Revised and Recorded Dec. 21st 1847
by A. Jackson Geo Surveyor

11 *Bear 8 N 89 W 24*
 11 *Sugar 5 N 61 E 30*
 12 *Bear 22 S 54 1/2 W 24*
 13 *Do 9 S 48 E 13*
 17 *Bear 9 S 9 W 37*
 18 *Do 8 N 57 1/2 E 21*
 19 *500 ft Oak 13 S 4 E 19*
 20 *Bear 8 N 16 W 21 1/2*
 20 *Sugar 12 S 49 W 34*
 20 *Bear 10 N 47 W 73*
 20 *Bear 24 S 77 E 33*
 21 *Do 14 N 78 W 10*
 21 *Bear 12 S 48 W 49*
 22 *Bear 17 S 48 1/2 E 42*
 22 *Bear 6 N 19 W 17*
 23 *Doan 10 S 43 W 13*