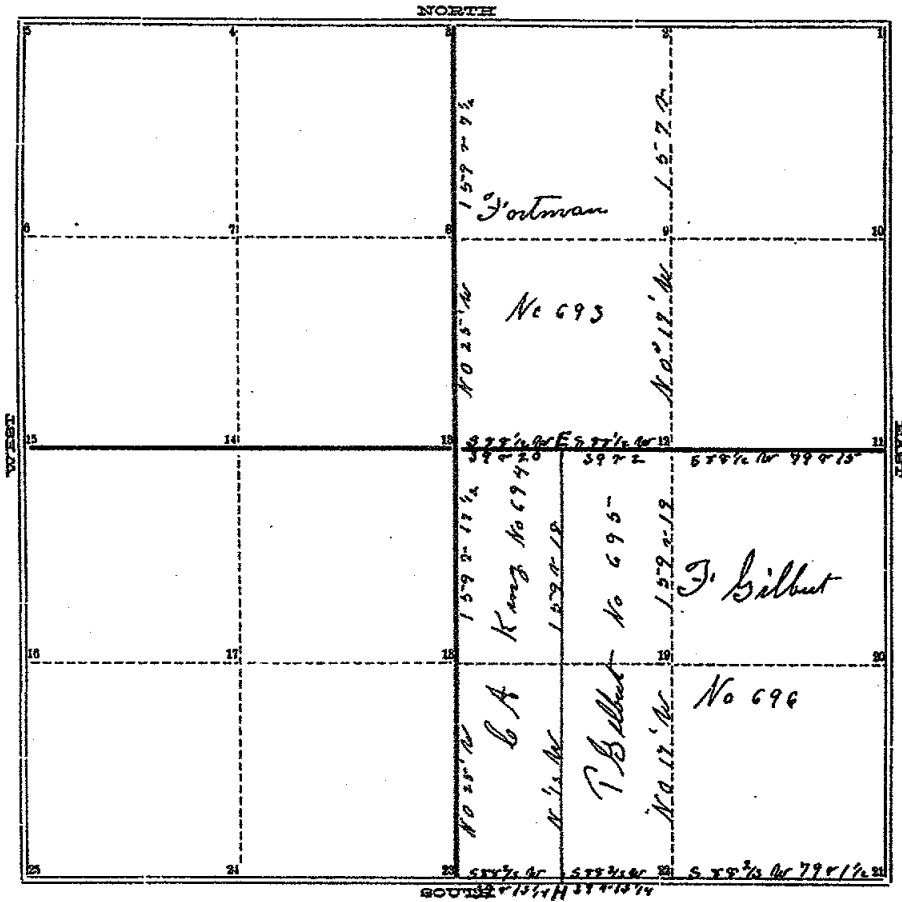


COUNTY SURVEYOR'S RECORD,

TOWN *Three* NORTH, RANGE *One West*, MERIDIAN OF MICHIGAN.

1-327

SEC. *14*



P. 171. 0. 2

TOWN *Three* NORTH, RANGE *One West*, MERIDIAN OF MICHIGAN.

- 1 Sugar 16 S 46 E 14 1/2
- 2 D O 9 N 77 E 5-17
- 3 Sugar 12 S 60 W 13
- 4
- 5
- 6
- 7
- 8
- 9
- 10 Hick 9 S 65 E 20
- 11 Spruce 24 N 60 W 10
- 12 Elm 8 S 83 3/4 E 70
- 13 D O 16 N 66 1/2 E 20

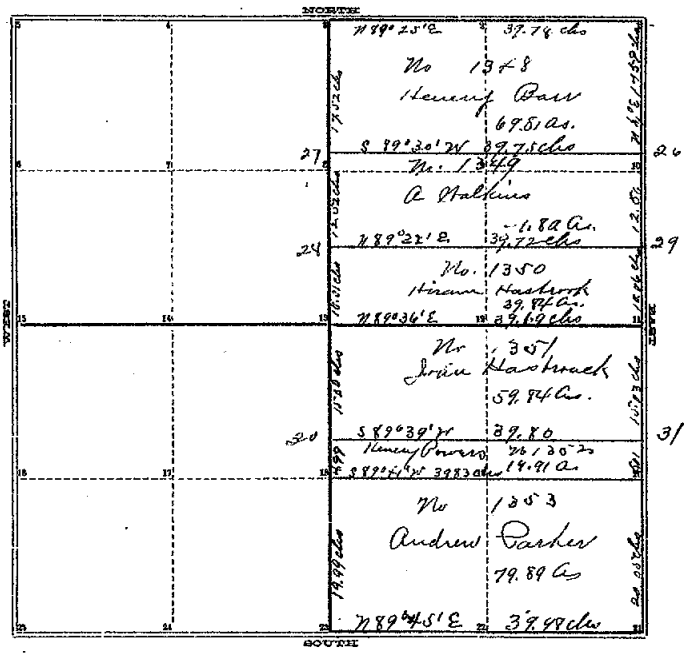
- 24
- 25 Elm 50 S 44 E 31
- E D O 11 S 53 W 24
- Bush 18 S 72 W 21 1/4
- H D O 12 N 23 1/2 E 22

Run by the true Meridian Nov 2nd 1853
 Surveyed and Recorded Dec 14th 1853
 by Amos Jackson Co Surveyor

- 20 Elm 18 S 45 3/4 W 55 1/2
- 21 Bush 20 N 86 1/4 W 52
- 22 Bush 11 N 65 W 55 1/2
- 23 Elm 5 S 54 E 14

COUNTY SURVEYOR'S RECORD,
TOWN Paris NORTH, RANGE One West, MERIDIAN OF MICHIGAN.

SEC. 23



TOWN _____ NORTH, RANGE _____, MERIDIAN OF MICHIGAN.

1	24
2	25
3	
4	
5	
6	
7	
8	
9	
10	
11	
12	
13	
14	
15	
16	
17	
18	
19	
20	
21	

INGHAM COUNTY, MICHIGAN.

TOWN Free North, RANGE One West, MERIDIAN OF MICHIGAN.

Summary of the east half of section Twenty Three in Township No Three North of Range No. One West (T. 3 N. R. 1 W.) as represented by the accompanying Plat the scale of which is 11.4 chains to an inch; in which plat the bearings and distances of the lines, the names of owners, the number of acres owned by each; the position of roads and letters of reference to lines and corners are respectively given. Roads in Red ink.

The corners are described as follows.

- (3) a post from which an Elm 22 in diam bears S 10° E 70 3/4 links
- (1) " " " " " Elm 24 " " " S 45 3/4 W 55 1/2 "
- (26) " " " " " Apple 2 " " " N 49° W 76 "
- " " " " " W. Oak 26 " " " S 16 1/2° 142 3/4 "
- (27) " " " " " Elm 11 " " " N 85 1/2° E 36 1/2 "
- " " " " " Beech 18 " " " S 29° 6 2/3 "
- (28) " " " " " Beech 12 " " " N 74° E 26 1/2 "
- " " " " " Beech 12 " " " S 78 1/2° E 26 1/4 "
- (29) a post (11) a post
- (13) " " " " " Spruce 9 inches " " S 78 3/4° W 31 "
- " " " " " Elm 8 " " " S 60° W 32 3/4 "
- (31) " " " " " Elm 30 " " " N 85 1/2° W 101 3/4 "
- (20) " " " " " W. Oak 16 " " " N 51° E 45 "
- " " " " " Birch 8 " " " S 76° E 35 2/3 "
- (15) " " " " " Beech 9 " " " S 27° E 14 "
- " " " " " Beech 12 " " " S 89° W 20 "
- (20) " Post
- (19) " " " " " Beech 10 " " " S 27 1/4° E 32 1/2 "
- " " " " " Beech 14 " " " N 20 3/4° E 40 "
- (23) " " " " " Beech 14 " " " S 40° W 18 "
- " " " " " W. Oak 10 " " " N 72° E 24 "

(21) a stone and crockery (I think) buried for corner.
 Run by the true Meridian Magnetic Var. 2 1/2° E.
 Surveyed May 12th 1870 for those named in the plat and
 subsequently recorded by T. J. Brown, Dep. Commr, Ing. Co., Mich.

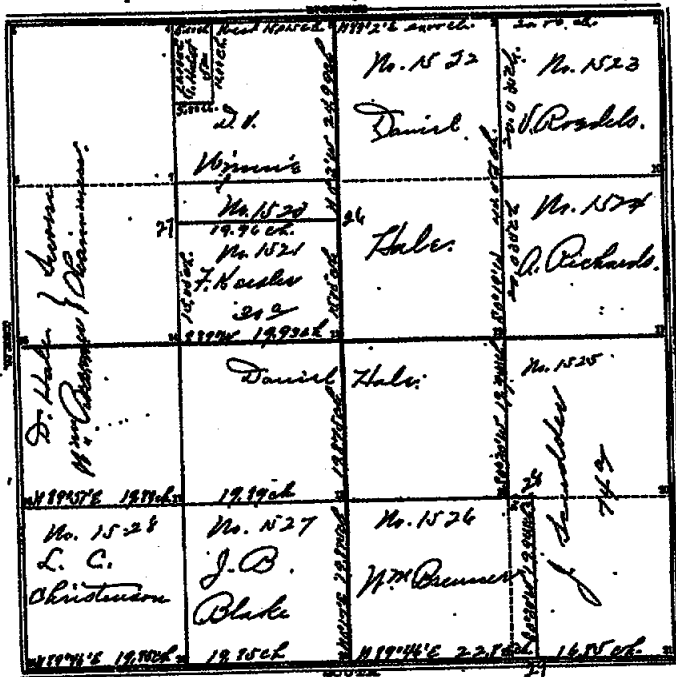
2-152

COUNTY SURVEYOR'S RECORD,

TOWN Three NORTH, RANGE 14 West, MERIDIAN OF MICHIGAN.

SEC. 14

K-5



TOWN Three NORTH, RANGE 14 West, MERIDIAN OF MICHIGAN.

Corrus Escandil

Corner	Timber	Distance	Bearing	Dist	Corner	Timber	Distance	Bearing	Dist
1	a stone	7	N 73° 42' E	77	22	a stone	6	S 70° E	125
2	a stone	7	N 73° 42' E	77	23	a post	12	S 82° E	106
3	a stone	6	N 73° 42' E	77	24	Post	7	The bearings to top	
4	a stone	5	N 73° 42' E	77	25	"	"	"	
5	Post	4	N 73° 42' E	77	26	Post	8	S 6 7/8° W	194 1/2
6					27	stone	The bearings		
7									
8									
9	Post	4	N 73° 42' E	77					
10	Iron	2 1/2	N 73° 42' E	77					
11	a stone	5	N 73° 42' E	77					
12	a post	19	S 56° E	41 1/2					
13	a post	6	N 73° 42' E	77					
14	a post	4	N 73° 42' E	77					
15	a post	5	N 73° 42' E	77					
16	a post	4	N 73° 42' E	77					
17	a post	15	N 73° 42' E	77					
18	a post	4	N 73° 42' E	77					
19	a post	6	N 73° 42' E	77					
20									
21	a post	2 1/2	S 45° 42' W	50 1/2					
22									
23	a stone	9	N 73° 42' E	77					

INGHAM COUNTY, MICHIGAN.

152

TOWN Three North, RANGE One West, MERIDIAN OF MICHIGAN.

Survey of section No Fourteen in Township No Three north
 of Range No One West as shown in the accompanying diagram
 the scale of which is 13 chains to one inch in which the names of corners,
 the bearings and lengths of the lines measured, the relative position
 of the land as described, position of roads which are shown by red
 lines, letters of reference to lines and corners are respectively given.
 Note: At (2) a corner had previously made by T. J. Brown (see Page 157)
 which was some from the one here recorded; but I think this one right
 on account of the way being clear, that was then full of timber.

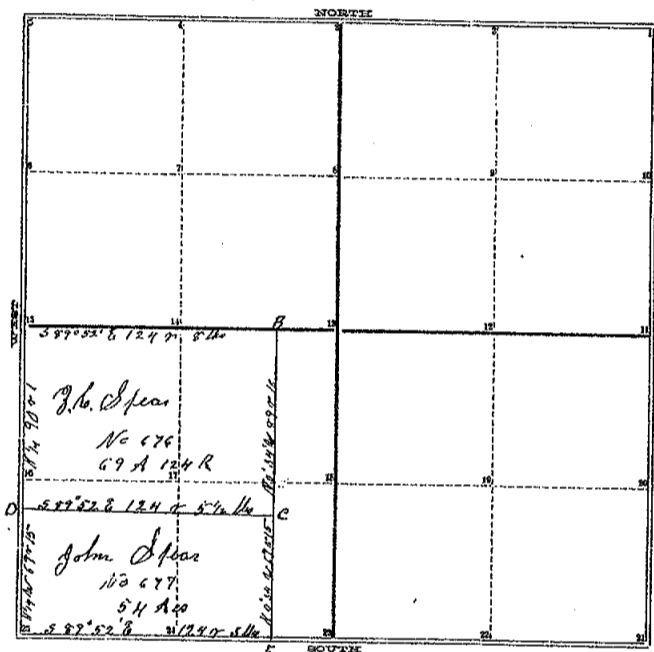
The corners (2) (12) (13) were established by G. Jackson (see Vol 2
 Page 171) and were readily found and perpetuated.

Run by the true Meridian May Var 1° 52' E
 Surveyed May 24th and 25th 1877 & Closed June 15, 1877.
 by A. P. Drake
 Co Surv.

COUNTY SURVEYOR'S RECORD,

TOWN *Shaw* NORTH, RANGE *One West*, MERIDIAN OF MICHIGAN.

SEC. 24



Rec'd

TOWN *Shaw* NORTH, RANGE *One West*, MERIDIAN OF MICHIGAN.

- 1
- 2
- 3
- 4
- 5
- 6
- 7
- 8
- 9
- 10
- 11
- 12
- 13
- 14
- 15
- 16
- 17

2A *Acres 6 N 54 W 11*
 E 26 *D O 19 N 57 1/2 E 44*
 Acres 18 5 1/4 W 54
 B *Red Oak 32 N 51 E 53*
 5 acres 10 N 45 1/2 W 40
 C *Acres 19 S 81 1/2 W 56*
 Blm 22 S 79 1/2 W 66
 D *D O 12 S 44 W 79*
 Blm 28 N 45 1/2 W 95 1/2
 F *D O 30 27 1/2 E 27 1/2*

6 *Acres 5 N 54 W 6*
 15 *Blm 8 N 54 E 10*

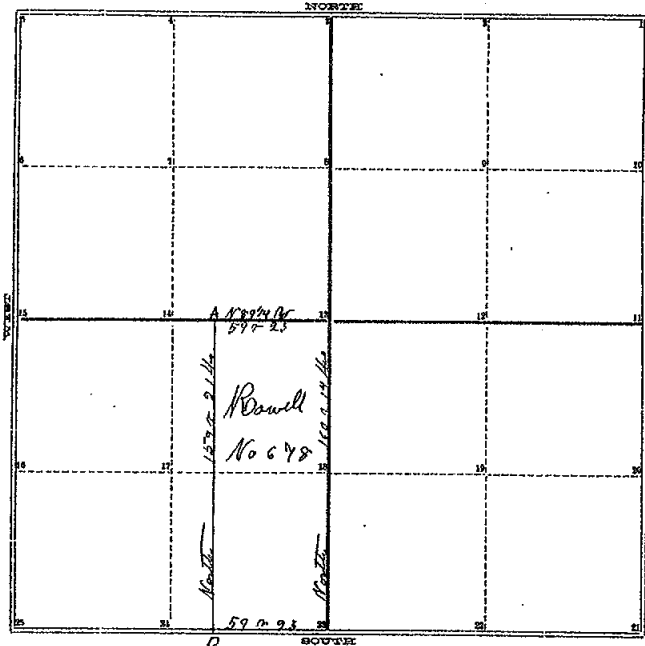
INGHAM COUNTY, MICHIGAN.

TOWN *Shaw* NORTH, RANGE *One West*, MERIDIAN OF MICHIGAN.

Bm by the true Meridian *Jan 2 50 E*
 Surveyed and Recorded *Oct 15 1853*
 by *A Jackson County Surveyor*

COUNTY SURVEYOR'S RECORD, 4-318
TOWN *Jhu* NORTH, RANGE *One West*, MERIDIAN OF MICHIGAN.

SEC. *25*



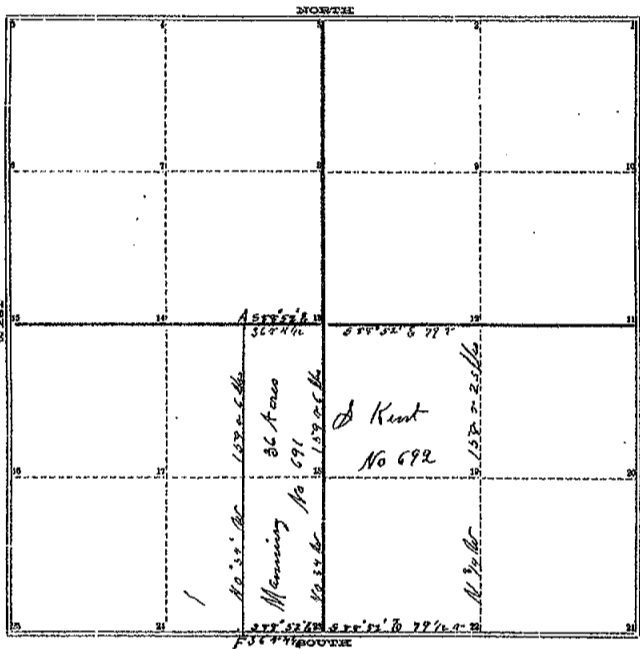
P. 162 10/2

TOWN *Jhu* NORTH, RANGE *One West*, MERIDIAN OF MICHIGAN.

- 1 24
- 2 25
- 3 *N. 1/2 Sec 14 S 42 E 37 1/2 1/2*
- 4 *A. 1/2 Sec 5 S 51 W 2 3/4 1/2*
- 5 *1/2 Sec 5 S 27 1/2 E 2 7/8*
- 6 *D. No other title*
- 7
- 8
- 9
- 10
- 11
- 12 *B. 1/2 Sec 34 N 54 1/2 W 38 1/2*
- 13 *1/2 Sec 34 S 65 E 55 1/2*
- 14
- 15
- 16
- 17
- 18 *Proven by the true Meridian No 2 586*
- 19 *Surveyed and Recorded Oct 14th 1853*
- 20 *by Jackson County Surveyor*
- 21
- 22 *Sec 5 S 64 E 50*
- 23 *D 0 12 N 64 E 20*

COUNTY SURVEYOR'S RECORD,
TOWN *Shaw* NORTH, RANGE *One West*, MERIDIAN OF MICHIGAN.

SEC. 24



P. 170 No. 2

TOWN *Shaw* NORTH, RANGE *One West*, MERIDIAN OF MICHIGAN.

- 1
- 2
- 3
- 4
- 5
- 6
- 7
- 8
- 9
- 10
- 11
- 12
- 13
- 14
- 15
- 16
- 17
- 18
- 19
- 20
- 21
- 22
- 23

2a
2b
Ruch 14 S 54 1/2 W 54
A R Ock 32 N 31 E 53
Wright 28 N 45 1/2 W 55 1/2
F D O S O S 27 1/2 E 27 1/2

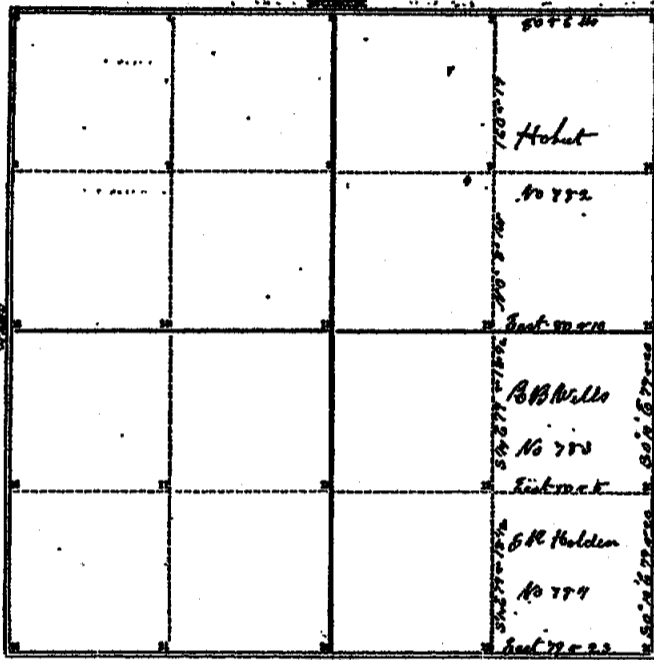
11
12
13
14
15
16
17
18
19
20
21
22
23

11
12
13
14
15
16
17
18
19
20
21
22
23

11
12
13
14
15
16
17
18
19
20
21
22
23

INGHAM COUNTY
TOWN *Shaw* NORTH, RANGE *One West*

Run by the true Meridian Nov 27 1850
Surveyed and Recorded Dec 12th 1853
by A Jackson County Surveyor



TOWN 2nd NORTH, RANGE 2nd West, MERIDIAN OF MICHIGAN.

- 11 1 5 Aug 20 N 10 E 40
- 11 2 10 Oct 15 N 30 W 2 40
- 11 3 8 Aug 14 S 40 W 6 20
- 11 4
- 11 5
- 11 6
- 11 7
- 11 8
- 11 9
- 11 10 Aug 24 N 30 E 20
- 11 11 June 14 S 40 E 20
- 11 12 June 14 N 20 E 17
- 11 13 Aug 8 S 57 W 10
- 11 14
- 11 15
- 11 16
- 11 17
- 11 18 Oct 15 N 57 W 40
- 11 19 Aug 24 S 40 W 57
- 11 20 Oct 12 N 20 E 17
- 11 21 June 22 N 50 W 20
- 11 22 March 17 N 2 W 55
- 11 23 Do 9 N 40 W 6 73
- 11 24 Oct 15 N 60 E 5
- 11 25 March 9 N 20 W 30

INGHAM COUNTY, MICHIGAN.

370

TOWNSHIP NORTH, RANGE East, MERIDIAN OF MICHIGAN.

Bound by the true Meridian No 236 &
Surveyed and Recorded Oct 21st 1854
by A Jackson Co Surveyor