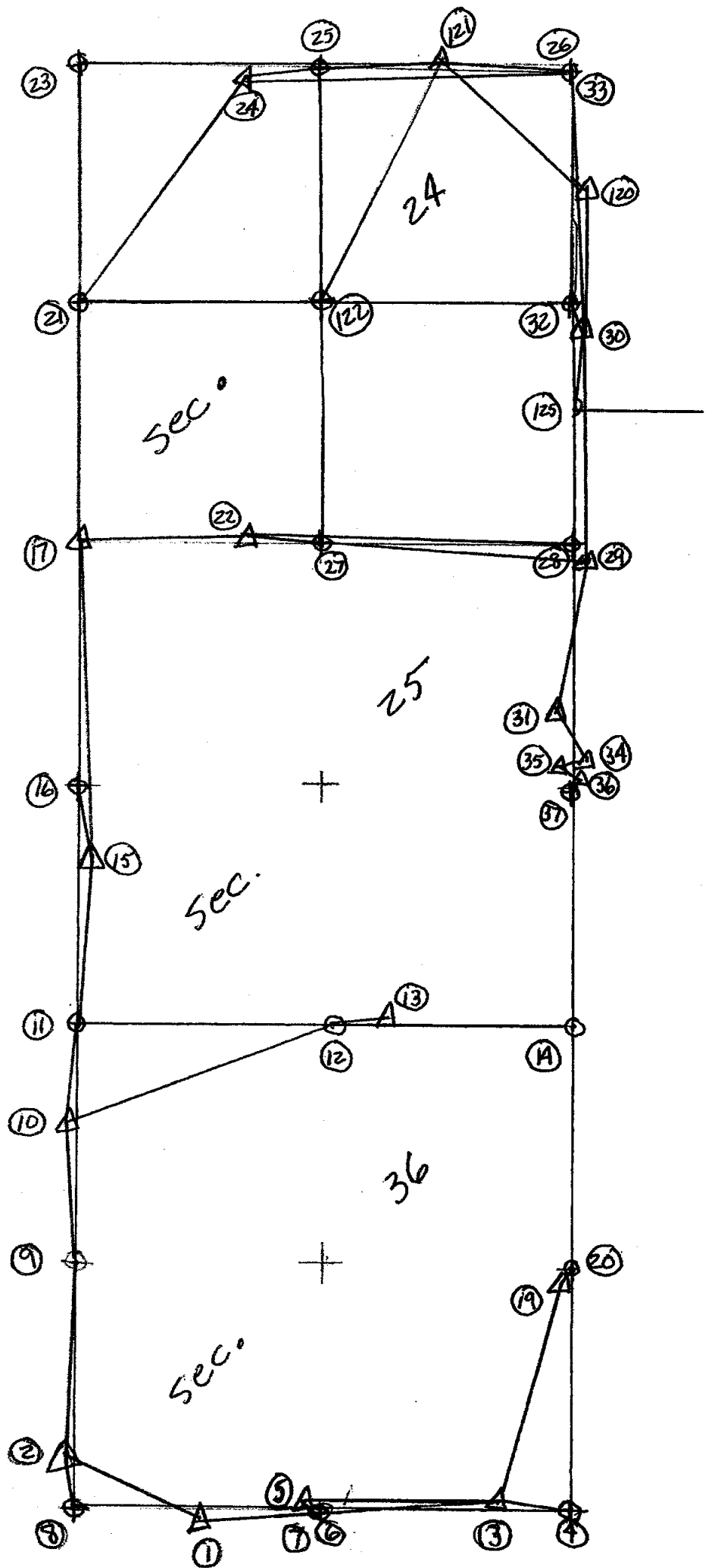
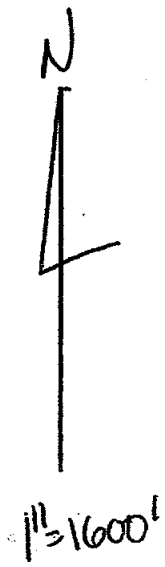


Coordinate Report

<u>Pt Name</u>	<u>Northing</u>	<u>Easting</u>	<u>Desc.</u>
1	20,000.000	5,000.000	Tp
2	20,707.244	4,157.140	TP
3	19,602.300	8,510.994	TR
4	19,481.599	9,366.891	M-13
5	19,826.993	6,711.326	TR
6	19,808.462	6,736.698	L-13
7	19,808.276	6,710.164	L-1
8	20,126.794	4,099.168	K-13
9	22,775.404	4,419.173	K-12
10	24,099.960	4,566.088	TR
11	25,419.844	4,734.031	K-11
12	25,078.838	7,366.984	L-11
13	25,022.212	7,896.672	TR
14	24,728.147	10,011.921	M-11
15	27,200.576	4,963.662	TR
16	28,063.851	5,051.583	K-10
17	30,707.711	5,369.193	K-9
18	19,805.110	6,736.118	True L-13
19	22,076.179	9,665.933	TR
20	22,102.464	9,690.176	M-12
21	33,345.763	5,684.735	K-8
22	30,471.744	7,156.850	TR
23	35,983.679	6,000.260	K-7
24	35,765.720	7,376.629	TR
25	35,598.214	8,625.797	L-7
26	35,197.858	11,250.116	M-7
27	30,337.034	8,009.251	L-9
28	29,967.995	10,640.069	M-9
29	29,959.331	10,648.682	TR
30	32,330.671	10,916.184	TR
31	28,655.703	10,460.052	TR
32	32,579.378	10,945.375	M-08
33	35,198.365	11,250.312	M-07
34	27,665.533	10,393.079	TR
35	27,612.304	10,358.366	TR
36	27,469.084	10,348.841	TR
37	27,353.405	10,333.807	M-10??
103	20,404.837	2,024.234	TR
104	18,908.055	3,914.837	TR
105	20,133.320	4,046.688	K-1
106	20,456.573	1,475.581	J-13
107	17,610.922	3,748.910	K-2
108	27,879.459	10,395.426	possible corner
109	27,877.694	10,420.444	possible rebar
110	27,877.909	10,421.369	Fd Boss B+C
111	27,355.044	10,333.999	possible corner
112	27,331.830	10,663.182	possible rebar
113	27,427.297	10,674.364	possible rebar
114	27,427.704	10,674.871	Fd Boss B+C
115	27,449.012	10,370.697	Intersection
116	27,698.840	10,814.376	Intersection
117	27,450.797	10,345.215	Intersection
118	27,722.940	10,377.092	Intersection
119	32,962.306	8,316.902	inter. 1/4-1/4
120	33,778.565	11,094.426	TR
121	35,424.182	9,892.220	TR
122	32,960.055	8,317.313	L-08
123	35,598.164	8,625.775	L-7
124	35,198.306	11,250.293	M-07
125	31,508.562	10,810.373	A-9 Wheat
126	31,507.492	10,820.056	Intersection
127	27,355.102	10,334.691	Calc M-10
128	27,703.977	7,687.308	Calc L-10
129	27,879.736	10,395.458	Intersection
130	27,351.917	10,359.225	Cogo

Traverse sketch - Alaredon Twp.

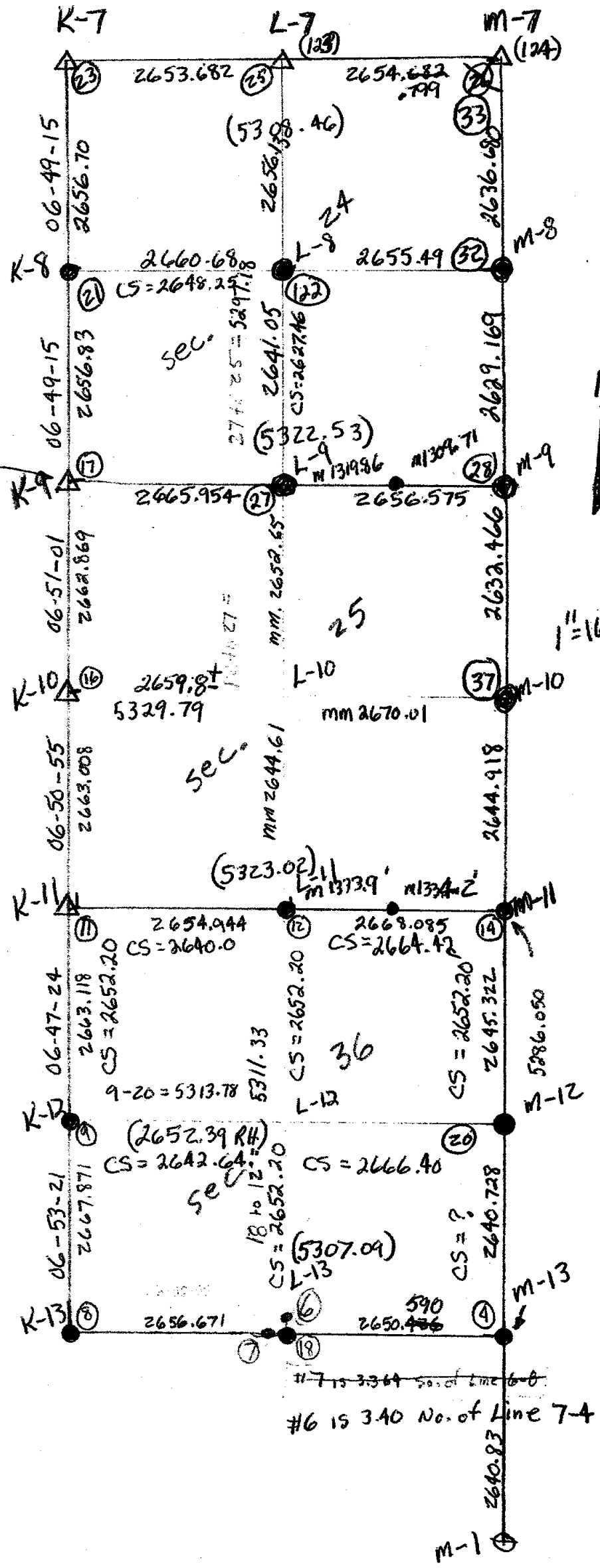


Alaredon Twp.

#17 is 1.336' E. of Line 11 to 23

8 to 23 = 06-50-12
Average = 2661.71

- Ⓜ point #
- △ previously recorded in prior remor.
- Submitted & approved
- Submitted to Peer



Average = 2638.71

#7 is 3.364 No. of Line 6-8
#6 is 3.40 No. of Line 7-4