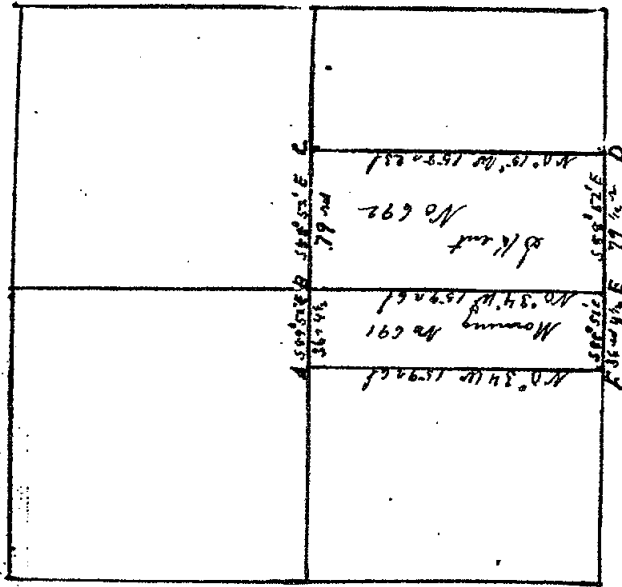
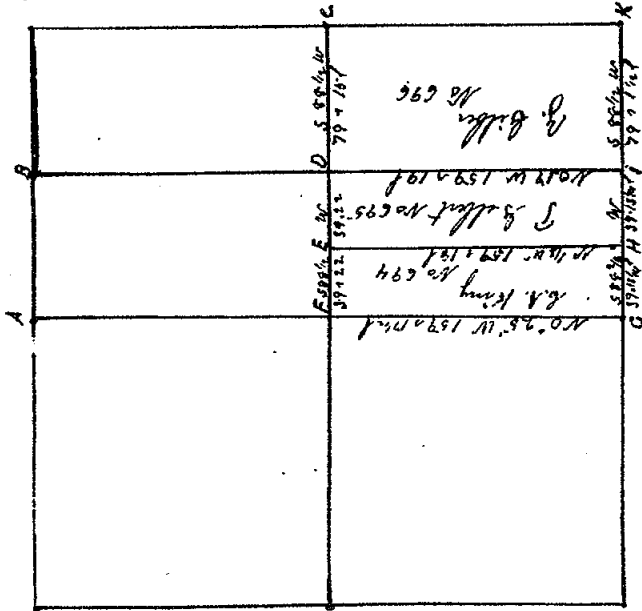


Alorinda Dec 24



- A. Beach 14 S 34 1/2 W 34
 - B. Beach 12 S 37 1/2 W 10 3/4
 - C. Lyma 10 N 39 W 19 1/4
 - D. Steamer 22 S 14 1/2 W 67
 - E. Elm 10 S 57 E 40
 - F. Walnut 24 N 45 1/2 W 65 1/4
- A. Jackson like 2 Page 170 Dec 12. 1853

Alorinda Dec 14



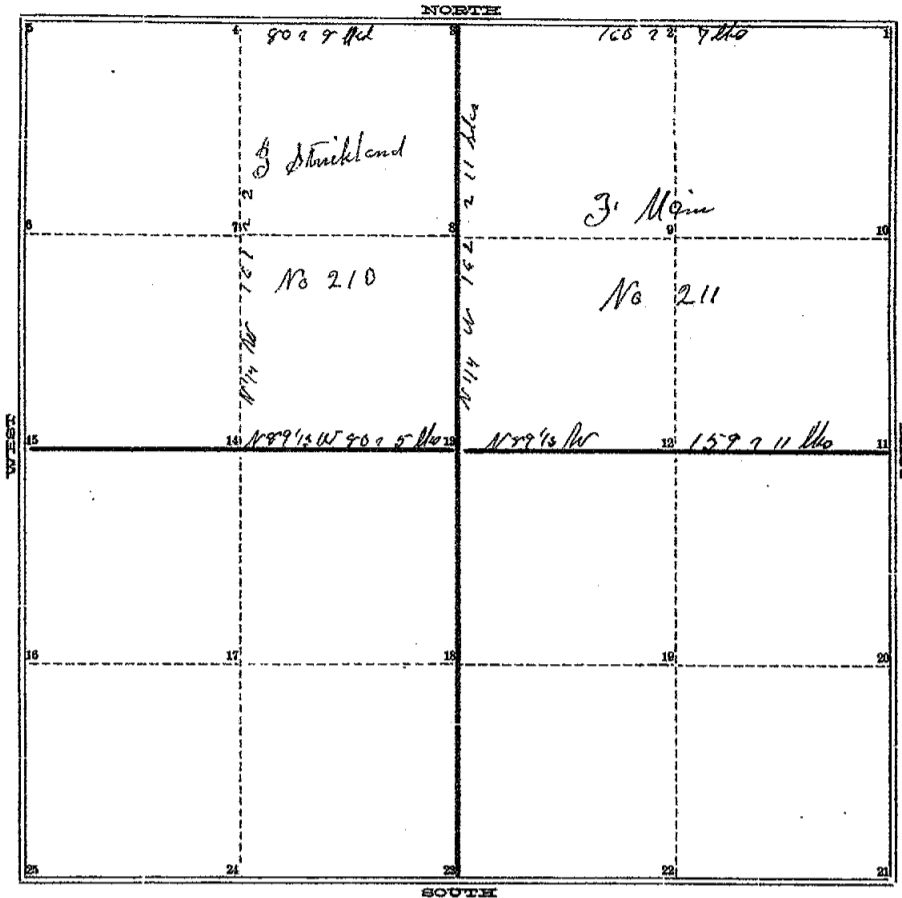
- A. Beach 18 N 57 E 5
 - B. Sugar 12 S 60 W 13
 - C. Head 9 S 65 E 20
 - D. Elm 24 N 60 W 10
 - E. Elm 30 S 44 E 31
 - F. Beach 12 S 3 W 82
 - G. Sugar 30 N 34 W 11
 - H. Beach 18 S 1/2 W 21 3/4
 - I. Sugar 18 N 78 1/2 E 34 1/2
 - K. Elm 18 S 43 W 65 1/2
- A. Jackson like 2 Page 171 Dec 14 1853

COUNTY SURVEYOR'S RECORD,

TOWN *Three* NORTH, RANGE *One West*, MERIDIAN OF MICHIGAN.

SEC *Twenty*

V 1 pg 61



See Vol 1

TOWN *Three* NORTH, RANGE *One West*, MERIDIAN OF MICHIGAN.

- 1 Elm 5 m N 54 1/2 E 7 1/2
- 1 W Oak 6 m 2 3/4 W 11 1/2 24
- 2 25
- 3 Sugar 24 m N 19 E 15 1/2
- 3 Elm 19 m S 25 W 21 1/2
- 3 Sugar 22 m N 70 W 25 1/2
- 4 Elm 24 m S 56 E 40 1/2
- 5
- 6
- 7
- 8
- 9
- 10
- 11 Buck 10 m N 81 1/2 E 26 1/2
- 11 Ironwood 9 m S 62 W 22 1/2
- 12
- 12 Sugar 12 m S 60 W 35 1/2
- 13 Sugar 18 m N 67 W 29 1/2
- 13 Beech 11 m S 54 1/2 E 27 1/2
- 14 Buck 10 m N 68 1/2 E 14 1/2
- 15
- 16

INGHAM COUNTY, MICHIGAN.

V 1 - 61

TOWN *Three* NORTH, RANGE *One West*, MERIDIAN OF MICHIGAN.

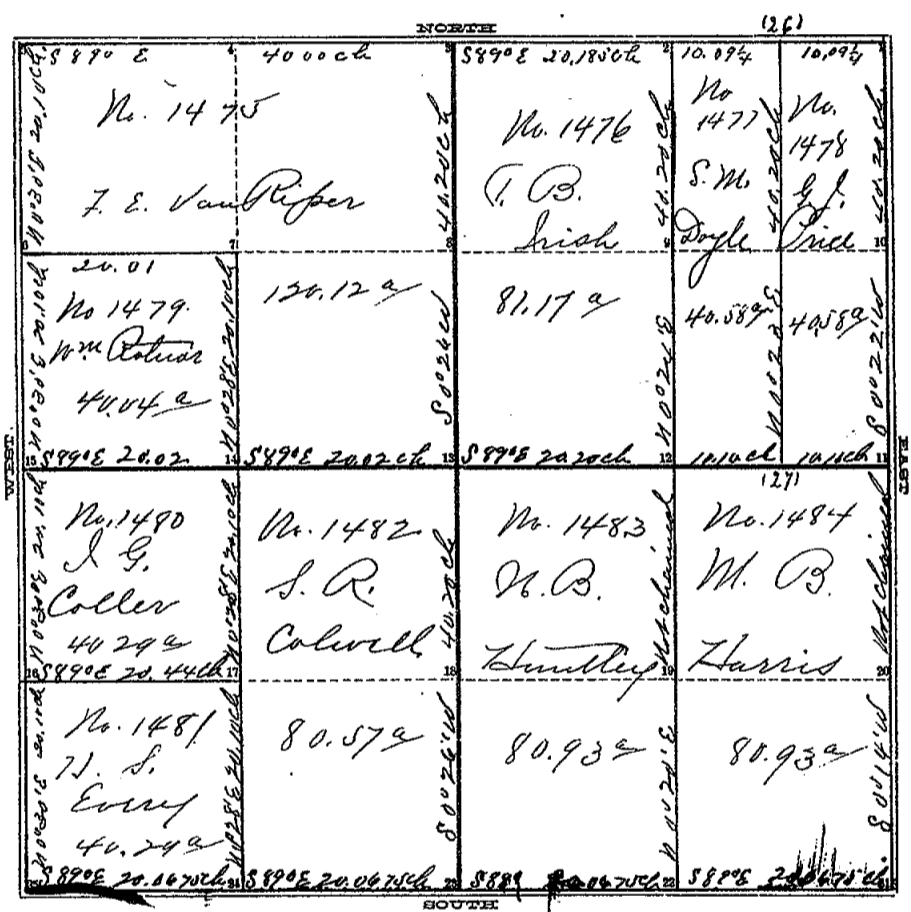
Run by the True Meridian Van 3/4 E
Surveyed and Recorder July 11th 1842
A Jackson Co Surveyor

2-135

2-135 COUNTY SURVEYOR'S RECORD,

TOWN Three NORTH, RANGE One West, MERIDIAN OF MICHIGAN.

SEC. 34



TOWN _____ NORTH, RANGE _____, MERIDIAN OF MICHIGAN.

- 1
- 2
- 3
- 4
- 5
- 6
- 7
- 8
- 9
- 10
- 11
- 12
- 13

24
25

INGHAM COUNTY, MICHIGAN.

TOWN Three North, RANGE One West, MERIDIAN OF MICHIGAN.

Survey of section No Thirty six in Township No Three North of Range No One West as represented by the accompanying plat (the scale of which is 12 chains to one mile); in which plat the numbers of the corners, the number of acres owned by each, the bearings and distances of the lines, and the letters of reference to the lines and corners are respectively given.

The corners are described as follows.

(1)	a post from which	the N.E. Cor. of S. House	bears	N 37 1/2 W	238 1/2 "
"	"	a Calumet 10 in. diam.	"	S 54 1/2 E	98 "
(14)	"	No Mark			
(2)	" stone	for corner			
(2)	" post "	top of Rock 4 x 2 1/2 "	"	N 11 1/4 W	27 1/2 "
"	" " "	and apple 8 in	"	S 72 1/2 E	142 1/2 "
(2)	" " "	top of granite bed of the	"	N 50 E	24 1/2 "
(1)	" " "	a maple 12 in.	"	N 35 1/2 W	61 "
"	" " "	an apple 5 "	"	S 34 1/2 E	43 1/2 "
(1)	" " "	a Sugar 8 "	"	S 92 1/4 W	40 "
"	" " "	" Sugar 7 "	"	N 22 W	24 "
(27)	" " "	" Sugar 10 "	"	S 30 1/2 E	24 "
"	" " "	" Sugar 12 "	"	S 62 1/2 W	36 "
(12)	" " "	" R. Oak 16 "	"	N 83 W	42 1/2 "
"	" " "	" R. Oak 8 "	"	N 2 3/4 W	28 "
(13)	" " "	" Sugar 20 "	"	N 43 W	31 "
"	" " "	" Sugar 20 "	"	N 55 1/2 E	29 "
(14)	" " "	" Walnut 36 "	"	S 89 E	38 1/2 "
(15)	" " "	an apple 4 "	"	S 60 1/2 E	68 "
(16)	" " "	a Sugar 6 "	"	N 22 1/2 W	28 "
(17)	" " "	an Elm 25 "	"	S 6 W	10 "
(24)	" " "	an R. Elm 6 "	"	N 38 E	70 1/2 "
(25)	" stone	Corner			
(28)	a post "	a Lime 74 "	"	N 13 1/4 N	101 "
(32)	" stone "	" Butternut 3 "	"	S 66 E	64 "
(21)	" " "	corner			
(7)	" post from "	a S. W. Oak 36 "	"	S 1 1/2 E	45 "
(6)	" " "	a Sugar 4 "	"	S 43 E	43 "

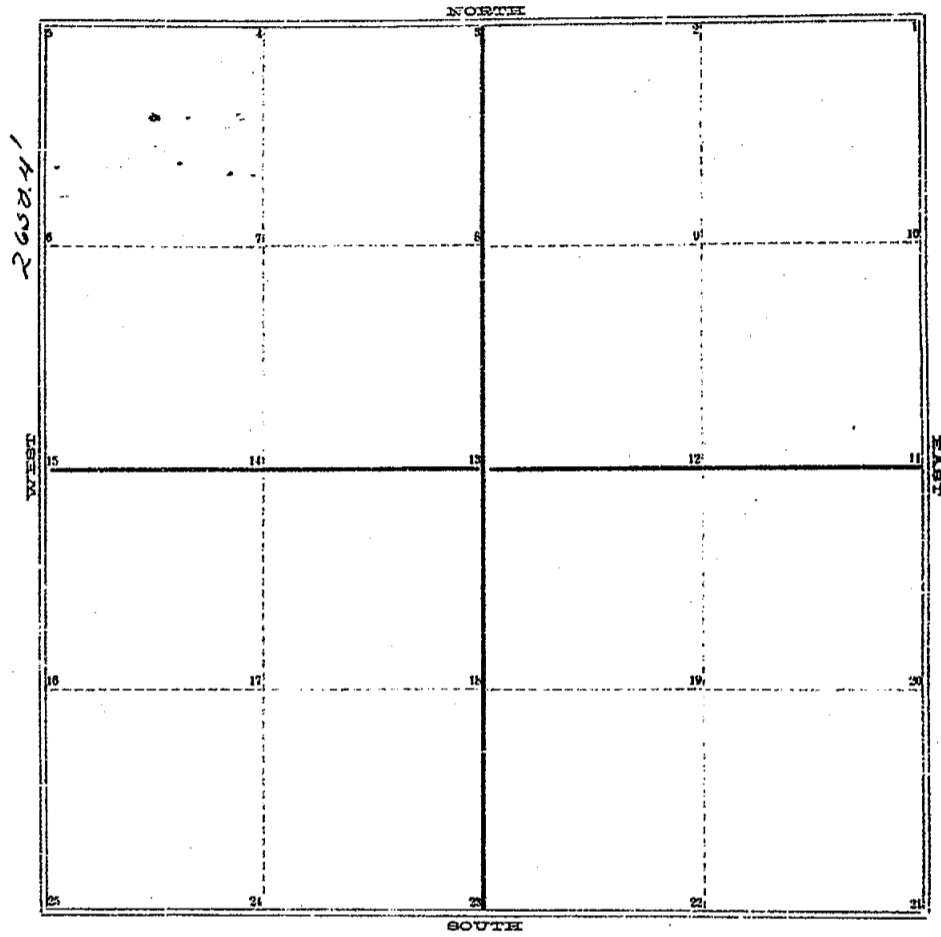
Run by the true Meridian May 10 1878 Surveyed & Recorded Jan 10 1876 by T. J. Brown, Dep. Cor. Comm. of Mich. At the corner (15) the nearest quarter post I found the old stake by surveying from the center of section east to the quarter post finding it ~~in the line~~ ^{one foot} of the point measured to, and is a little south and west from the line made by Mr. Brown. Set a stone and crockery ⁱⁿ a Sugar 7 in diam bears N 15 1/2 E 132 links. Then corrected ^{to} a Sugar 22 in diam bears N 37 1/2 W 25 1/2 links & Beech 6 S 62 1/2 W 21 1/2 links Surveyed Apr 20 1880 by A. P. Drake Cor. Sur. of Mich.

2-273

COUNTY SURVEYOR'S RECORD,

TOWN 3 NORTH, RANGE 1 W, MERIDIAN OF MICHIGAN.

SEC. 23



TOWN NORTH, RANGE, MERIDIAN OF MICHIGAN.

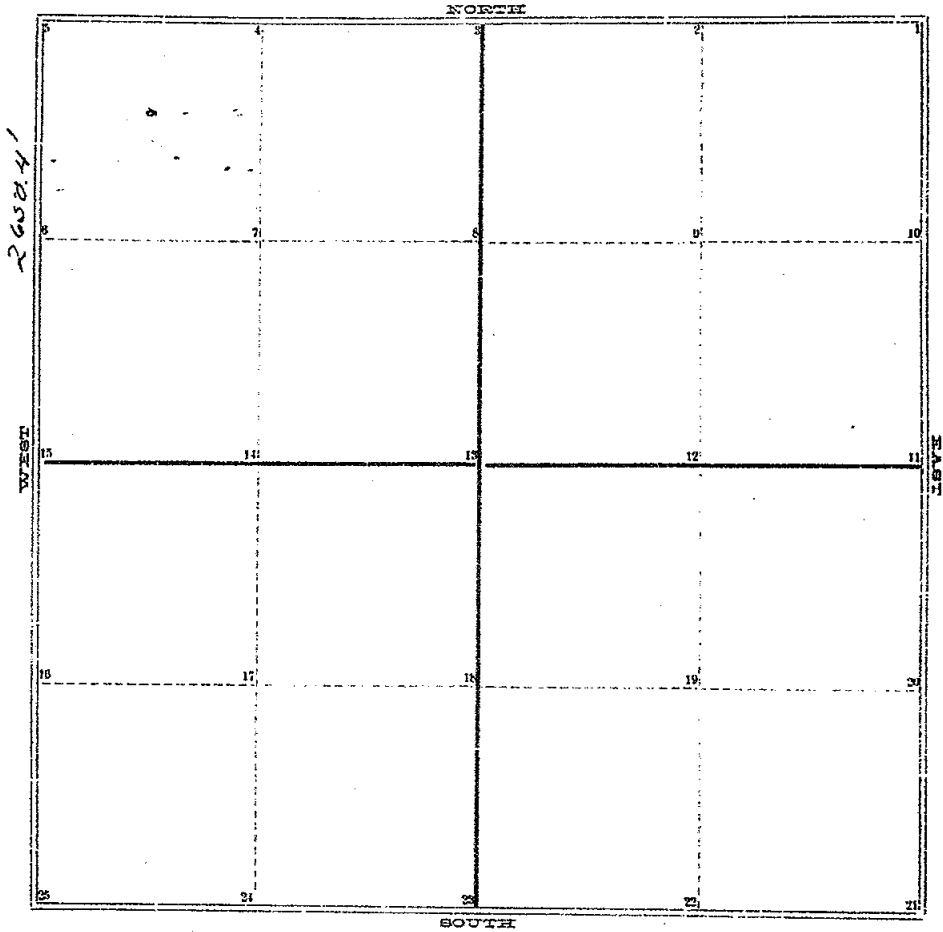
- 1
- 2
- 3 Stone Elm 4' N-E 30'
- 4 ^{tile} Plow point S. Maple 90" N-W 28'
- 5 Stone
- 6 ^{concrete} Plow Point
- 7
- 8
- 9
- 10
- 11
- 12
- 13
- 14
- 15 Stone
- 16
- 17
- 18

2-273

COUNTY SURVEYOR'S RECORD,

TOWN 3 NORTH, RANGE 1 W, MERIDIAN OF MICHIGAN.

SEC. 23

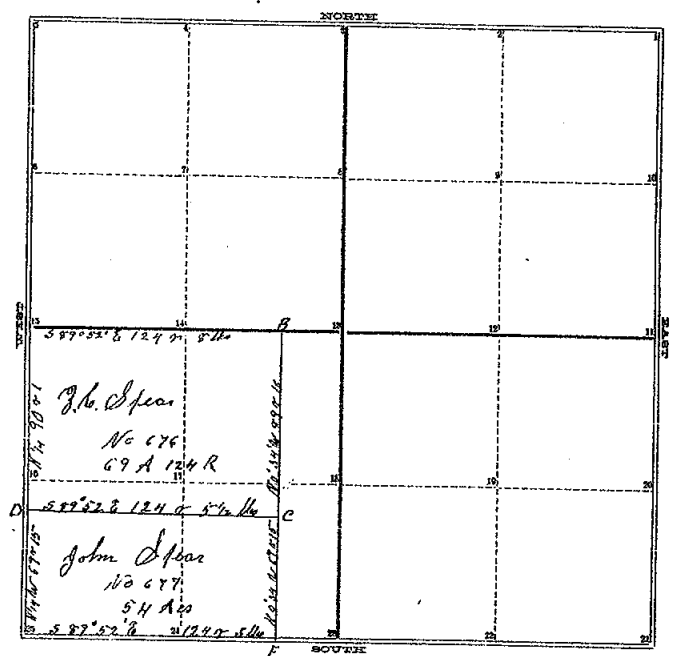


TOWN NORTH, RANGE, MERIDIAN OF MICHIGAN.

- 1 24
- 2 25
- 3 Stone Elm 4' N-E 30'
- 4 ^{tile} Plow point S. Maple 70" N-W 28'
- 5 Stone
- 6 Corral and Plow Point
- 7
- 8
- 9
- 10
- 11
- 12
- 13
- 14
- 15 Stone
- 16
- 17
- 18

COUNTY SURVEYOR'S RECORD,
TOWN *Shaw* NORTH, RANGE *One West*, MERIDIAN OF MICHIGAN.

SEC. 24



P. 1st Note

TOWN *Shaw* NORTH, RANGE *One West*, MERIDIAN OF MICHIGAN.

- 1
 - 2
 - 3
 - 4
 - 5
 - 6
 - 7
 - 8
 - 9
 - 10
 - 11
 - 12
 - 13
 - 14
 - 15
 - 16
 - 17
- 28 *Acres* N 59 W 11
 E 26 *Do* N 57 1/2 E 44
Acres 19 S 34 1/2 W 37
 B *Red Oak* 32 N 31 E 63
 3 *Acres* 10 N 85 1/2 W 46
 C *Acres* 19 S 71 1/2 W 56
Acres 22 S 79 1/2 W 44
 D *Do* 12 S 44 W 77
Acres 28 N 45 1/2 W 85 1/2
 F *Do* 30 27 1/4 E 27 1/2
- 5 *Acres* 5 N 59 W 6
 18 *Acres* 8 N 54 E 18

INGHAM COUNTY, MICHIGAN.

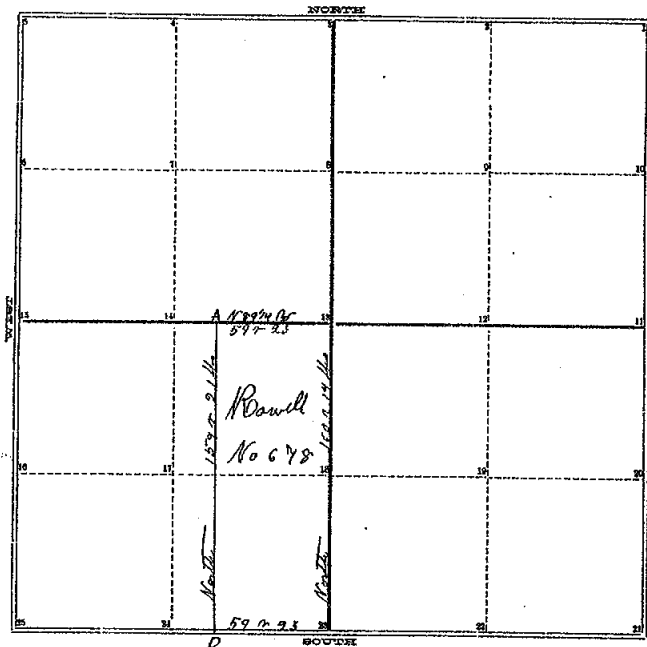
TOWN *Shaw* NORTH, RANGE *One West*, MERIDIAN OF MICHIGAN.

4-317

Run by the true Meridian Nov 2nd 50
Surveyed and Recorded Oct 15th 1853
by A Jackson County Surveyor

COUNTY SURVEYOR'S RECORD,
TOWN *Iron* NORTH, RANGE *One* West, MERIDIAN OF MICHIGAN.

SEC. 25



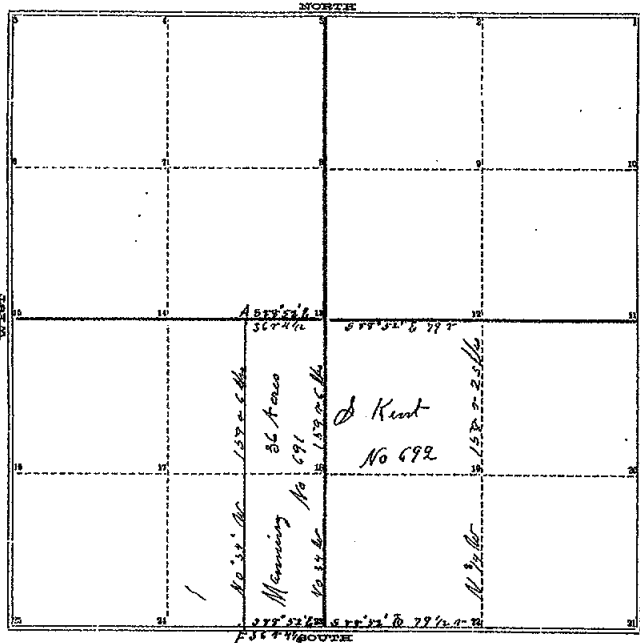
P. 162 No. 2

TOWN *Iron* NORTH, RANGE *One* West, MERIDIAN OF MICHIGAN.

- 1
 - 2
 - 3
 - 4
 - 5
 - 6
 - 7
 - 8
 - 9
 - 10
 - 11
 - 12
 - 13
 - 14
 - 15
 - 16
 - 17
 - 18
 - 19
 - 20
 - 21
 - 22
 - 23
- 24
- 25
- W. Ash 14 S 41 1/2 E 37 1/2 W
 A Beach 5 S 57 W 2 3/4 W
 C. Gray 5 S 27 1/2 E 27
 D. No other trees
- B A ch 34 N 54 1/2 W 35 W
 B 13 8 km 34 S 65 E 55 W
- 18 m by the true Meridian Nov 2^d 1856
 Surveyed and Recorded Oct 14th 1853
 by H Jackson County Surveyor
- 22 Quack 5 S 6 1/2 E 50
 C 23 D 0 12 N 54 E 20

COUNTY SURVEYOR'S RECORD,
TOWN *Shaw* NORTH, RANGE *One West*, MERIDIAN OF MICHIGAN.

SEC. 24



P 170 N. 12

TOWN *Shaw* NORTH, RANGE *One West*, MERIDIAN OF MICHIGAN.

- 1
- 2
- 3
- 4
- 5
- 6
- 7
- 8
- 9
- 10
- 11
- 12
- 13
- 14
- 15
- 16
- 17
- 18
- 19
- 20
- 21
- 22
- 23
- 24
- 25
- 26
- 27
- 28
- 29
- 30
- 31
- 32
- 33
- 34
- 35
- 36
- 37
- 38
- 39
- 40
- 41
- 42
- 43
- 44
- 45
- 46
- 47
- 48
- 49
- 50
- 51
- 52
- 53
- 54
- 55
- 56
- 57
- 58
- 59
- 60
- 61
- 62
- 63
- 64
- 65
- 66
- 67
- 68
- 69
- 70
- 71
- 72
- 73
- 74
- 75
- 76
- 77
- 78
- 79
- 80
- 81
- 82
- 83
- 84
- 85
- 86
- 87
- 88
- 89
- 90
- 91
- 92
- 93
- 94
- 95
- 96
- 97
- 98
- 99
- 100

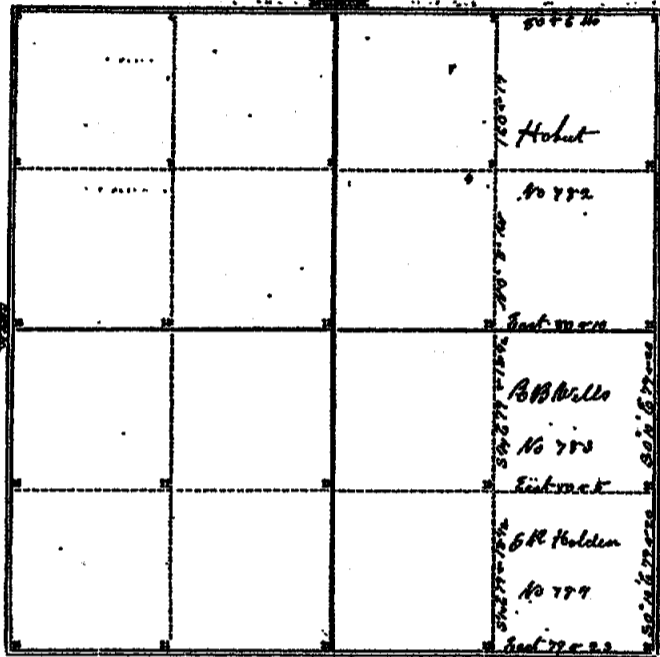
Bnd 14 S 54 1/2 W 34
 A R Ock 32 N 51 1/2 S 3
 Prcmt 22 N 45 1/2 W 8 1/2
 F D O S O 27 1/2 E 27 1/2

June 10 N 39 W 19 1/2
 C 12 Dec 9 S 55 1/2 W 54
 Dec 12 S 53 1/2 W 18 1/2
 S 13 S 14 1/2 W 34

Sycamore 22 S 14 1/2 W 51
 D O 16 S 75 1/2 W 57
 Dec 10 S 51 1/2 W 40
 No other tax

INGHAM COUNTY
TOWN *Shaw* NORTH, RANGE *One West*

Run by the true Meridian Nov 24 60
 Surveyed and Recorded Dec 12 1863
 by A Jackson County Surveyor



TOWN 14th NORTH, RANGE 2nd West, MERIDIAN OF MICHIGAN.

- 100455 5176 20
- # 1 3 2000 10 N 10 E 20
- 100455 5176 20
- 0 2 3 2000 14 S 40 74 6 20
- 3
- 4
- 5
- 6
- 7
- 8
- 9
- 10 2000 24 N 30 E 20
- 11 2000 14 S 70 E 20
- 12 2000 14 N 20 E 17
- 13 2000 8 S 0 74 10
- 14
- 15
- 16
- 17
- 18 2000 14 N 74 E 20
- 19 2000 24 S 74 E 20
- 20 2000 24 N 50 74 20
- 21 2000 14 N 20 E 55
- 22 2000 9 S 40 74 E 20
- 23 2000 14 N 20 E 55
- 24 2000 9 N 20 E 55

INGHAM COUNTY, MICHIGAN.

370

TOWNSHIP NORTH, RANGE 2nd West, MERIDIAN OF MICHIGAN.

Run by the true Meridian No 278
Surveyed and Recorded Oct 21st 1854
by A Jackson Geo Surveyor