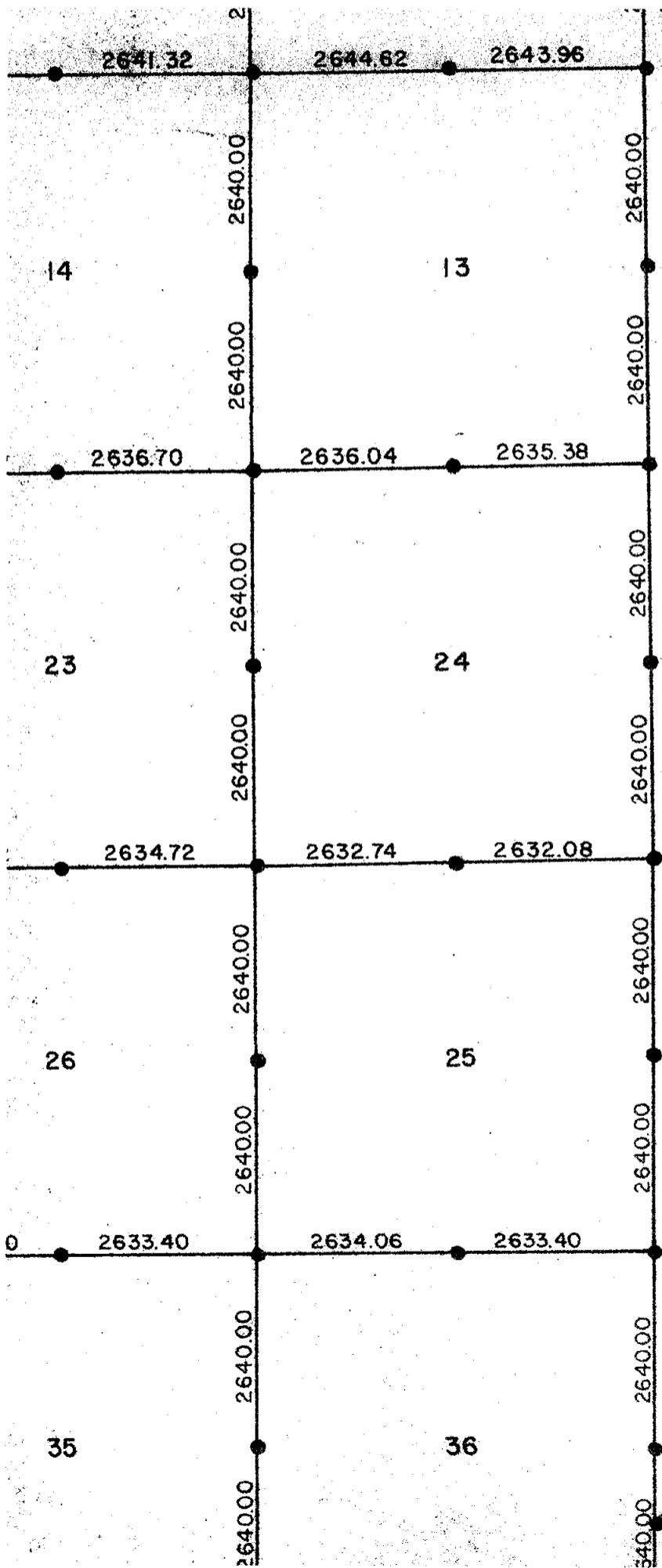


1918
 E. Evans Deputy Surveyor.

Alaiedon

I certify that the above is a true copy of the original plat in this office.
 Charles H. H. H.
 Surveyor General (Office)
 Idaho Falls, Idaho



by the original

A 40.00 Acreage
(from original

66.00 Closing Corner

Measurements which are outside subject township to adjacent townships measurements shown are



2000 1000 0
ONE INCH EQUALS

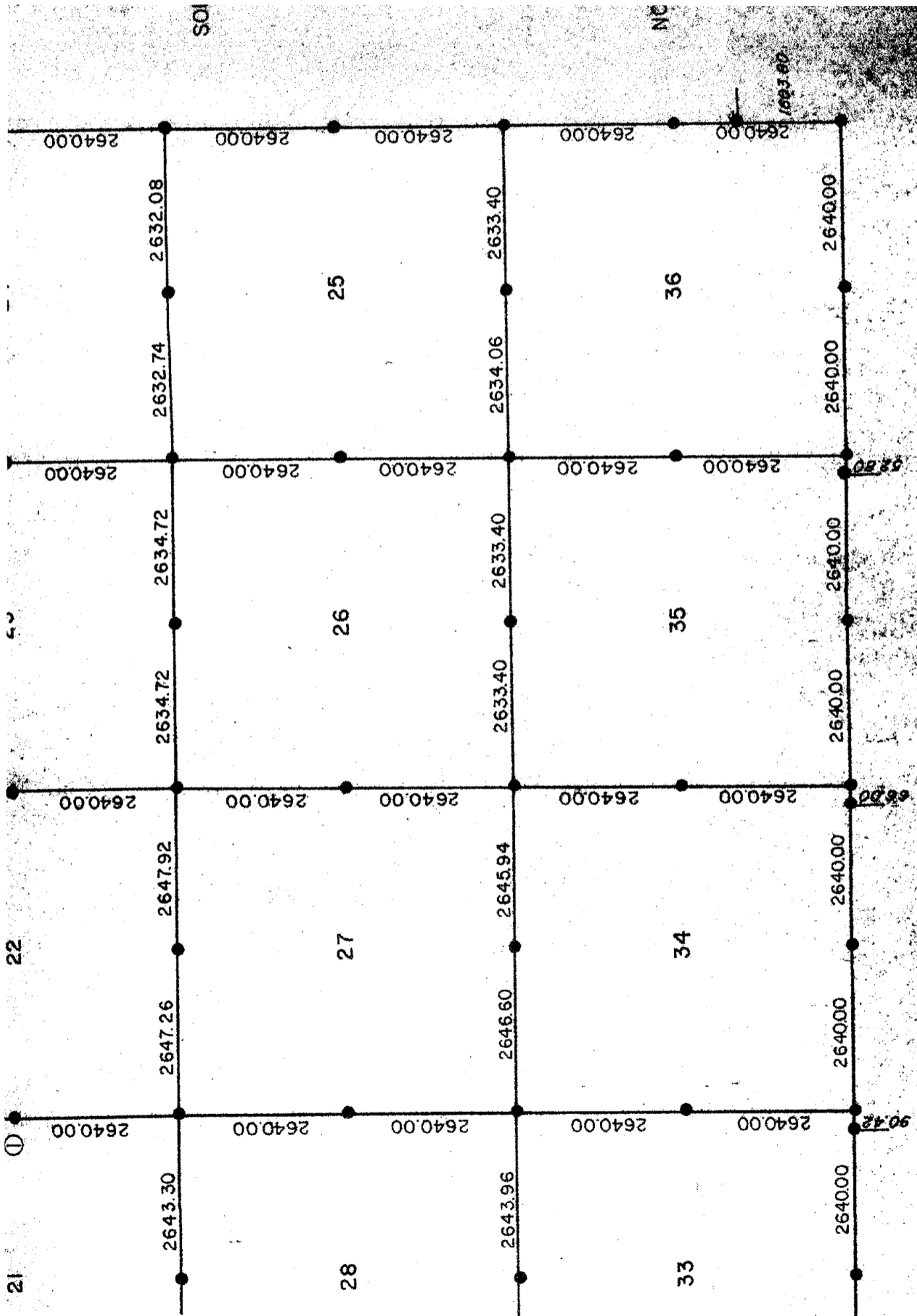
SOURCE : General Land Office Field
Exterior Field Survey
Surveyed :
Certified :
Surveyor :
Interior Field Survey
Surveyed :
Certified :
Surveyor :

The distances and monuments from the original field notes held by the Michigan State of Natural Resources. Distances were original chains and links.

NOTE : (1) Tree used as post.

Prepared by the Ingham and Remonumentation under the supervision of

Alameda Twp.



Algedon Twp.