

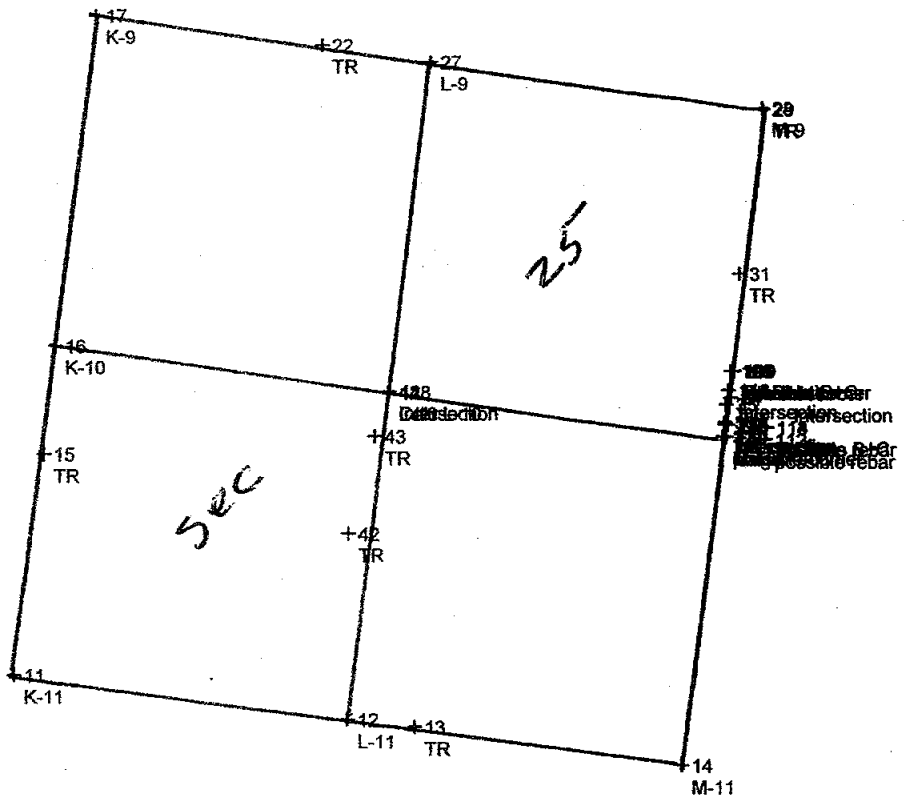


+21  
K-8

+129  
lots. 1/4-1/4

+32  
M-08  
+30  
TR

+126  
Intersection



+10  
TR

+9  
K-12

+39  
Intersection  
+38  
TR

+20  
TR12

2,000 feet  
+2  
TP

not rotated

## Coordinate Report

<u>Pt Name</u>	<u>Northing</u>	<u>Easting</u>	<u>Desc.</u>
1	20,000.000	5,000.000	TP
2	20,707.244	4,157.140	TP
3	19,602.300	8,510.994	TR
4	19,481.599	9,366.891	M-13
5	19,826.993	6,711.326	TR
6	19,808.462	6,736.698	L-13
7	19,808.276	6,710.164	L-1
8	20,126.794	4,099.168	K-13
9	22,775.404	4,419.173	K-12
10	24,099.960	4,566.088	TR
11	25,419.844	4,734.031	K-11
12	25,078.838	7,366.984	L-11
13	25,022.212	7,896.672	TR
14	24,728.147	10,011.921	M-11
15	27,200.576	4,963.662	TR
16	28,063.851	5,051.583	K-10
17	30,707.711	5,369.193	K-9
18	19,805.110	6,736.118	True L-13
19	22,076.179	9,665.933	TR
20	22,102.464	9,690.176	M-12
21	33,345.763	5,684.735	K-8
22	30,471.744	7,156.850	TR
23	35,983.679	6,000.260	K-7
24	35,765.720	7,376.629	TR
25	35,598.214	8,625.797	L-7
26	35,197.858	11,250.116	M-7
27	30,337.034	8,009.251	L-9
28	29,967.995	10,640.069	M-9
29	29,959.331	10,648.682	TR
30	32,330.671	10,916.184	TR
31	28,655.703	10,460.052	TR
32	32,579.378	10,945.375	M-08
33	35,198.365	11,250.312	M-07
34	27,665.533	10,393.079	TR
35	27,612.304	10,358.366	TR
36	27,469.084	10,348.841	TR
37	27,353.405	10,333.807	M-10
38	22,313.588	6,710.293	TR
39	22,440.782	7,050.707	L-12
40	22,439.358	7,051.332	Intersection
41	27,709.218	7,688.277	Intersection
42	26,575.948	7,371.190	TR
43	27,349.499	7,577.080	TR
44	27,704.238	7,687.238	L-10



# Traverse sketch - Alameda Twp.

