

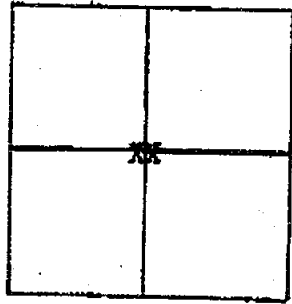
T. 3 N R. 2 E

SEC. 7

INGHAM CO., LeRoy Twp.

REMARKS

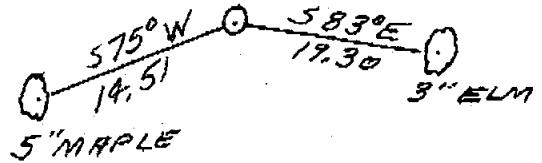
Center one quarter cor. of sec. 7
1" iron pipe with plug in 1' of water



WITNESSES

5" maple - S75°W - 14.51

3" elm - S83°E - 19.30



Harry Johnson, Survey Chief

B-4

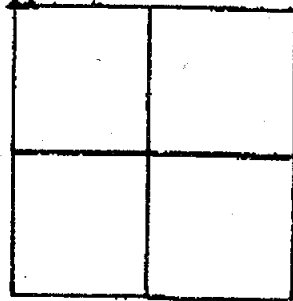
T. 3 N R. 2 E

INGHAM CO., LeRoy Twp.

SEC. 7

REMARKS

Common to 6,7 NW cor. of 7
1" iron pipe buried 5"
intersection of Linn & Meech Rds.

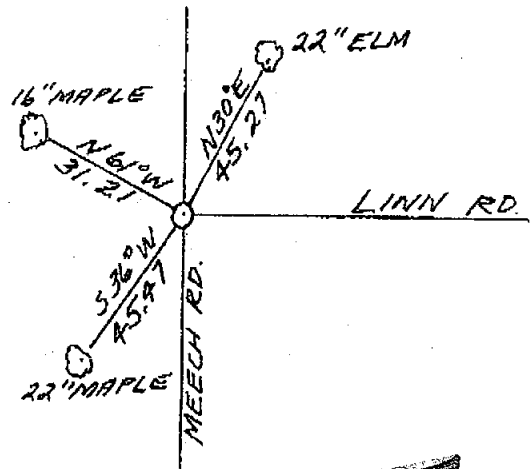


WITNESSES

16" maple - N61°W - 31.21

22" maple - S36°W - 45.47

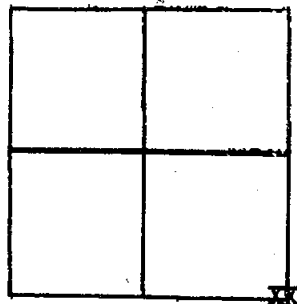
22" elm - N30°E - 45.27



Harry Johnson, Survey Chief

T. 3 N R. 2 E

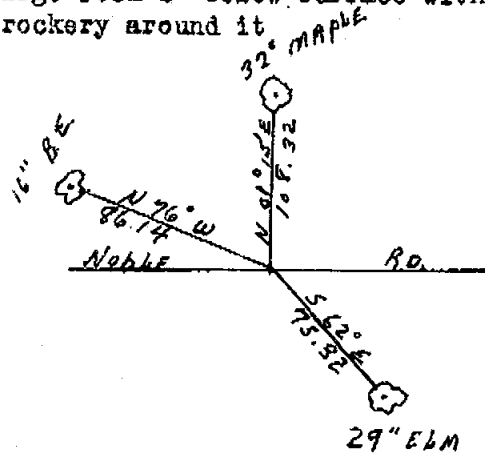
INGHAM CO., LeRoy Twp. SEC. 7



REMARKS
 Common to 7, 8, 17, 18 SE corner of 7
 Large rock 2" below surface with
 crockery around it

WITNESSES

- 16" box elder N76°W 86.14
- 32" maple N01°15'E 108.32
- 29" elm S62°E 75.32

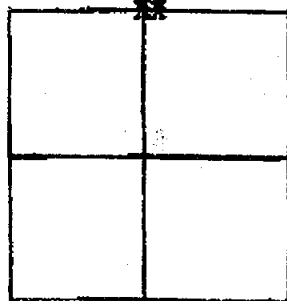


Harry Johnson, Survey Chief

C-5 Form 280

T. 3 N R. 2 E

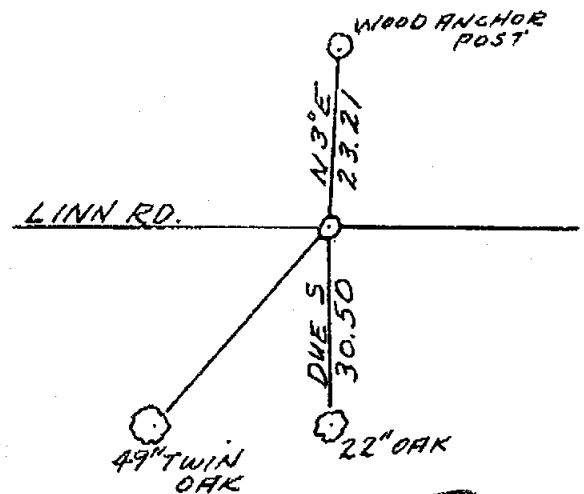
INGHAM CO., LeRoy Twp. SEC. 7



REMARKS
 N one quarter cor. of sec. 7
 1/4" steel rod buried 3"

WITNESSES

- 49" twin oak - S50°E - 60.04
- 22" oak - Due S - 30.50
- wood anchor post - N3°E - 23.21



Harry Johnson, Survey Chief

108

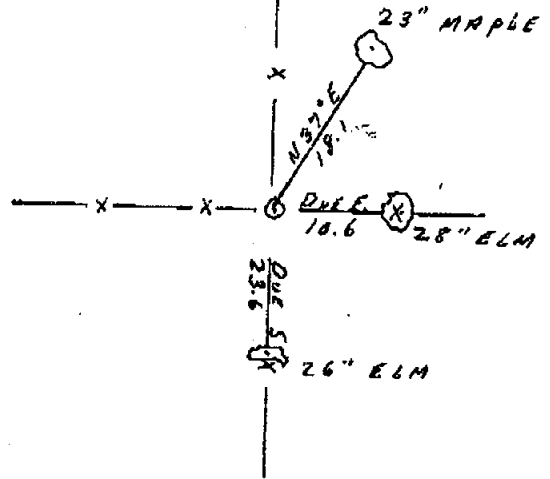
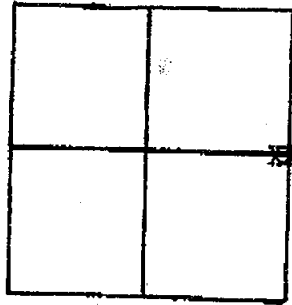
T. 3 N R. 2 E

SEC. 7

INGHAM CO., LeRoy Twp.

REMARKS

E quarter cor. of 7
Wood anchor post



WITNESSES

23" maple - N 37° E - 18.1

28" Elm - Due E - 10.6

26" elm - Due S - 23.6

Harry Johnson, Survey Chief

C-A

Form 280

T. T.3N. R. 2 E

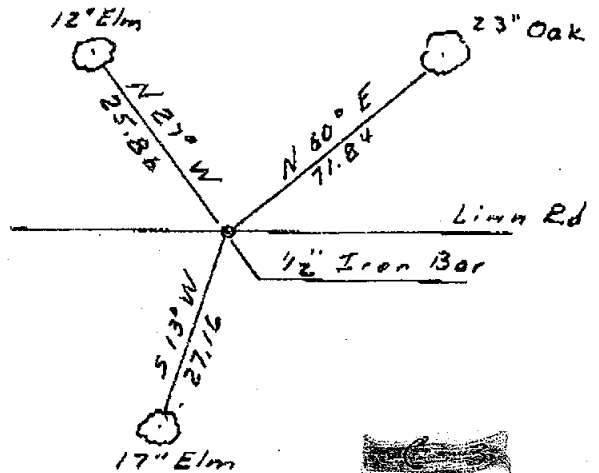
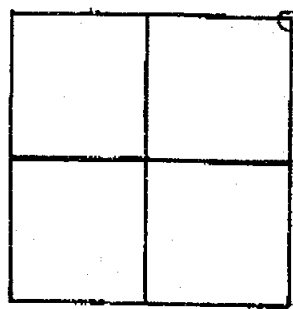
SEC. 7

INGHAM CO., LeRoy Twp.

REMARKS

N.E. Cor. Sec. 7 - Common to
Sec. 5, 6, 7, & 8

Found 1/2" Iron Bar in Rd.



WITNESSES

12" Elm - N 27° W - 25.86

23" Oak - N 60° E - 71.84

17" Elm - S 13° W - 27.16

Harry Johnson, Survey Chief



Ingham Co. Rd Comm
Corner Gold Map

<p><i>A-2 Iron</i></p>	<p>3/4" Iron on C 80 R/W fence R WSW 410 Q Meach Rd WSW. 1110'</p>	<p><i>A-3</i></p> <p>1" Pipe 16" Maple N 61°W 31.21' 22" Maple S 36°W 45.47' 22" Elm N 30°E 45.27'</p> <p><i>Items to</i></p>	<p>7</p> <p>1" Iron pipe 3" Elm S 83°E 19.3' 5" Maple S 75°W 14.51'</p>	<p>1/2" Iron P P N 42°W 41.1' NE cor land N 84°W 43.3' SE cor land S 60°W 49.74'</p>
<p><i>B-3</i></p>	<p>1/4" Iron 1w 49" Oak S 50°E 60.0' 22" Oak S 30.5' Anch post N 23.21'</p> <p><i>Items</i></p>	<p><i>B-3</i></p>	<p>Wood anch. post. 23" Maple N 37°E 18.1' 28" Elm E 10.6' " Elm S 23.6'</p>	<p>Stone, stockery 29" Elm S 62°E 75.32' 32" Maple N 108.32' 16" Box Elder N 75°W 86.14'</p>
<p><i>C-3</i></p>	<p>1/2" Iron 12" Elm N 27°W 25.86' 23" Oak N 60°E 71.84' 7" Elm S 13°W 27.16'</p> <p><i>Items</i></p>	<p><i>C-3</i></p>	<p>38" Maple 8" Ash N 24°W 29.0' 34" Elm N 70°W 31.6'</p>	<p>5/8" Iron 14" Elm N 64°E 43.11' Fence post N 110°W 23.23' N tree, cl of box elder S 32°W 85.2'</p>
<p><i>M-43</i></p> <p>Stone SW cor anch post Q State Rd S 88-44- 833.5</p>	<p>1" Pipe 30" Maple S 10°W 88.03' 35" Elm S 44°E 32.64' 26" Maple N 10°E 98.59'</p> <p><i>Stone 1111.0 Maple 1111.0 883.8</i></p>	<p>1" Pipe 38" Elm N 22°W 84.63' 13" Elm S 45°W 37.14' T P S 88°E 50.0'</p>	<p>Wood anch. post 10" Elm N 27°W 7.5' 10" Elm S 20°E 29.6' 18" Elm S 68°W 170'</p>	<p>3/4" Pipe 17" Elm N 22°E 47.0' 18" Elm S 62°W 50.29' 17" Maple N 22°W 67.79'</p>
<p>Stone Gas pipe S 50°W 57.32' Fence post S 2°E 24.78' 14" Elm N 80°E 98.46' 4" stump N 28.93'</p>	<p>Wood anch. post 1w 24" Butternut S 8" Butternut S 7 18" Elm S 25</p>	<p>Stone 26" Oak N 61° 20" Elm S 45° 22" Maple N 63</p>	<p>Stone 26" Oak N 61° 20" Elm S 45° 22" Maple N 63</p>	<p>Stone 26" Oak N 61° 20" Elm S 45° 22" Maple N 63</p>

Number	Northing	Easting	Elevation	Raw Desc	Fu
11					
Desc					
1	9999.9490	10007.8760	874.24	3382-26RP	
3382-26RP					
2	12193.7550	9999.8890	.	3382-26RP	
3382-26RP					
3	12221.3240	9433.5440	.	3382-26RP	
3382-26RP					
4	10385.0470	10006.4740	.	3382-26POL	
3382-26POL					
5	12162.8690	10064.2190	.	3382-26D13	
3382-26D13					
6	12163.2520	10017.8740	.	3382-26D1	
3382-26D1					
7	12200.4090	8803.3760	.	3382-27RP	
3382-27RP					
8	12184.4300	9351.8110	.	3382-27FDMON	
3382-27FDMON					
9	10385.6940	10027.6740	.	3382-27D2?	
3382-27D2?					
10	9721.9310	10929.4750	.	3382-28RP	
3382-28RP					
11	10737.8980	7552.4920	.	3382-28RP	
3382-28RP					
12	10014.2710	10022.2210	.	3382-28FCPST	
3382-28FCPST					
13	10012.9530	10029.7190	.	3382-28FCI	
3382-28FCI					
14	10032.9250	9963.6340	.	3382-28FCI	
3382-28FCI					
15	10214.5430	9293.8570	.	3382-28POL	
3382-28POL					
16	10102.8660	9731.4320	.	3382-28FCI	
3382-28FCI					
17	7734.5060	10421.0800	.	3382-29RP	
3382-29RP					
18	7736.3530	10042.0590	.	3382-29D3	
3382-29D3					
19	10411.9370	9335.1130	.	3382-29FCI	
3382-29FCI					
20	10407.4000	9452.6290	.	3382-29FCI	
3382-29FCI					
21	10176.5920	9487.4870	.	3382-29FCI	
3382-29FCI					
22	12001.4110	7544.2160	.	3382-30RP	
3382-30RP					
23	12253.9410	7342.7160	.	3382-30C1	
3382-30C1					
24	7623.3870	12723.0500	.	3382-30E3	
3382-30E3					
25	7765.4220	8756.2870	.	3382-30RP	
3382-30RP					
26	7818.5200	7385.2950	.	3382-31C3	
3382-31C3					
27	10284.2060	12715.4320	.	3382-32E2	
3382-32E2					
28	11429.0070	12710.6880	.	3382-32RP	
3382-32RP					
29	12146.0050	12663.6510	.	3382-32E-1?	
3382-32E-1?					
30	12145.5340	12676.7720	.	3382-32E13?	
3382-32E13?					
31	7772.3662	6072.5960	-100002.66	1e4-12 axe	
1					

2634.79
 6521.10
 6534
 = 40/X

le4-12 axel					
32	7720.6515	4765.8485	-100012.24	le4-13 b-3	
le4-13 b-3					
33	7676.3651	3582.6363	-100020.14	le4-11 a-3	
le4-11 a-3					
34	10202.0076	3556.4754	-100031.97	le4-15 m-2	
le4-15 m-2					
35	7551.9936	3583.6011	-100025.62	le4-15 m-3	
le4-15 m-3					
36	11766.0753	4157.2152	0.00	LE4-16RP	
LE4-16RP					
37	10574.2670	3631.3547	0.00	LE4-16RP	
LE4-16RP					
38	12708.2590	15223.1060	874.74	LE4-18 RP	LE
4-18					
RP					
39	12252.6480	15157.8110	879.80	LE4-18 RP	LE
4-18					
RP					
40	12430.8520	3527.8690	859.40	A-1?	A-1?
41	11979.8756	15334.6874	874.74	LE4-18F-1	
LE4-18F-1					
42	12578.9958	12660.8282	874.74	LE4-18RP	
LE4-18RP					
43	12470.4427	13961.3156	874.74	LE4-19RP	
LE4-19RP					
44	12032.2715	3288.1314	-8.56	le4-22 rp	le
4-22					
rp					
45	12391.1221	3374.8913	-14.64	le4-23 rp	le
4-23					
rp					
46	12431.1103	3528.0245	-27.00	le4-23 a-1?	le
4-23					
a-1?					
47	10243.6747	4717.4033	-0.26	le4-25 rp	le
4-25					
rp					
48	10383.9614	4725.2505	-7.41	le4-25 b-2	le
4-25					
b-2					
100	10486.4730	7359.6830	.	C-2?	C-2?
101	9962.9570	10022.3250	.	CLGR	CLGR
102	10392.3550	10021.1620	.	D-2	D-2
220	12163.9850	10047.0120	0.00	STONED-13	
STONED-13					
221	12251.2160	7423.1810	0.00	C-13	C-13
222	11356.0696	5514.7952	0.00	L03-56RP	
L03-56RP					
223	11630.2566	4430.4227	0.00	L03-57RP	
L03-57RP					
224	12516.6636	4578.3764	0.00	L03-58RP	
L03-58RP					
225	12420.3773	4712.6764	0.00	L03-59B13	
L03-59B13					
228	12026.3410	14000.1871	874.74	1/8?	1/8?
234	10202.2623	3556.5565	0.00	LE4-15-34M-2	
LE4-15-34M-2					
235	7676.3619	3582.3281	-100025.91	Intersecti	
on					
Intersection					

250	12420.7333	4672.4180	0.00	Cogo	Cogo
251	12420.5406	4694.2054			
-99900000000000001000000000000.00				Intersection	Intersecti
on					
252	12373.1817	4775.3037	.	B-13?	B-13?
500	10468.3979	7359.8572	.	c-2?	c-2?
501	12440.6003	3533.5610	.	A-1?	A-1?