

STATE OF MICHIGAN
County of Ingham
On this 22 day of December 1968
a Notary Public in and for said County, personally came the above named:
Darrell R. Brown and his wife Lois M. Brown;
Arthur Boroughs and his wife Mary Clara
Boroughs.

known to me to be the persons who executed the above dedication and acknowledged the same to be their free act and deed.
Glendora Bixby
Notary Public
My Commission expires 10-31-68
County Ingham

APPROVAL BY BOARD OF COUNTY ROAD COMMISSIONERS
This plat has been examined and was approved on the 15th day of December 1968 by the INGHAM County Board of Road Commissioners.
C. C. Coffey (Chairman)
C. E. Puffenberger (Member)
K. G. Brown (Member)
Phillip Willis (Member)

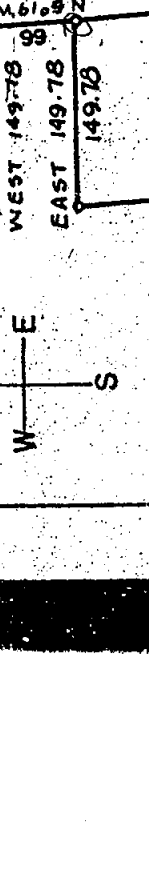
and that the width of lots conform with the requirements of Section 44, Act 114 of 1929, as amended.

Office of County Treasurer, Ingham County.
I hereby certify, that there are no tax liens or other claims against the lands described herein, and that there are no tax liens or other claims against the lands for the five years preceding the 22nd day of December 1968.
This certificate does not apply to taxes, if any, now in process of collection by township, city or village collecting officers.
Harry A. Penny County Treasurer

COPY
Register's Office
Ingham County, S. S.
Plat of Sec. 5
was filed 13th day of Dec
64 1968
on P. O. 27
Richard E. Grogan
Register of Deeds
ORIGINAL ON FILE

DESCRIPTION OF LAND PLATED
DAR-LO, a Subdivision
AR. THE NE. FRAGMENT, A.A. RE. SECTION 5, T. 4N., R. 1E., Williamston Township, Ingham County, Michigan.
is described as follows:
Beginning S 5°19' E 66 feet from the NE Corner of said Section 5, thence continuing along the East line of Section 5,
S 5°19' E 1561 feet;
West 200.00 feet;
N 5°19' W 920.00 feet;
East 149.78 feet;
N 5°19' W 66.00 feet;
West 149.78 feet;
N 5°19' W 575.00 feet and
East 200.00 feet to point of beginning. Contains 9 lots numbered 1 through 9.

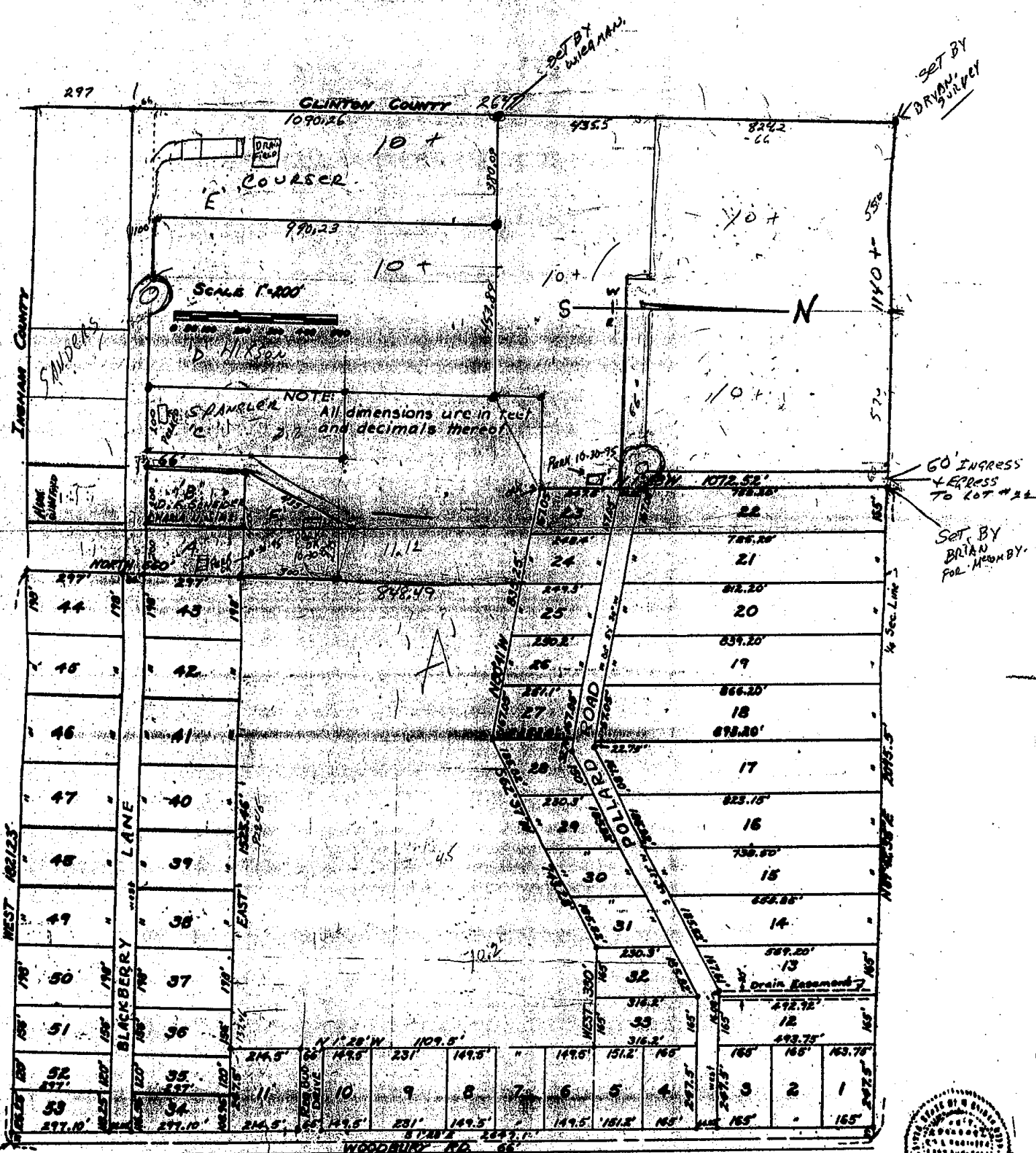
SURVEYOR'S CERTIFICATE
I hereby certify that the plat herein delineated is a correct one and that permanent metal monuments consisting of bars not less than one-half inch in diameter and 36 inches in length, or shorter bars of not less than one-half inch in diameter tapered over each other at least 6 inches with an over-all length of not less than 36 inches, encased in a concrete cylinder of least 4 inches in diameter and 36 inches in depth have been placed at points marked (O) as shown upon all angles in the boundaries of the land platted, at all the intersections of streets, intersections of alleys, or of streets and alleys, and at the intersections of streets and alleys with the boundaries of the plat as shown on said plat.
Max F. Logg
Professional Engineer
Max F. Logg



NOTE:
All dimensions are in feet and decimals thereof.

GREEN HILLS No. 1

A PART OF THE SE 1/4 OF SEC. 32, T5N, R1E, WOODHULL TOWNSHIP,
SHIAWASSEE COUNTY, MICHIGAN



Point of Beginning:
SE Corner Sec. 32, T5N, R1E,
Woodhull Twp., Shiawassee Co.,
Michigan.

