

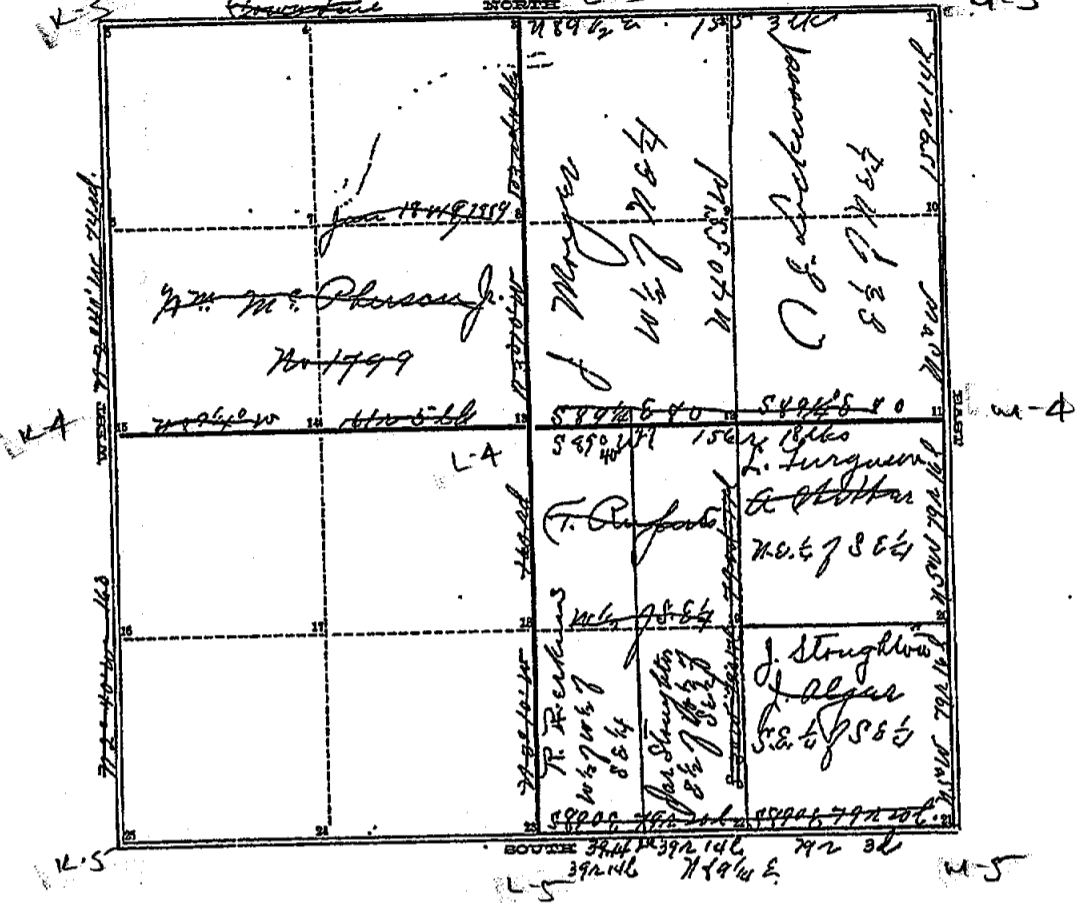
		2		
		1-1/8" Iron, brick 5" Oak E. 24.1' Anch. post E 26.6' 34" Oak S.E. 38.7' 24" Pignut S.S.W. 100.6' Anch. post W. 28.4'		
		11	12	
		Iron shaft, brick 18" Hickory S. 174.9' N.E. cor, school S.W. 94.7' 12" Hickory W.S.W. 138.0' 2" Oak S.S.E. 75.8' Road sign N.E. 37.7'		
			2600.19'	2620.31'
	Iron stake 18" Oak N. 32.2' 28" Oak SW. 52.5' 8" Ash S.E. 40.6'	Iron, brick 16" Stump SW. 44.5' 24" Cottonwood N.E. 29.8' 14" Oak N.E. 111.2' Road sign S 20.5' Anch. post S 24.3' Anch. post N.E. 37.7'	Iron P.P. E.S.E. 58.0' Sign post SW 47.61' 12" Elm W.N.W. 90.24' 12" Maple N.N.W. 43.12'	Stone, boat spike 30" Oak N. 29.19' 1" Iron S. 40.0' Gas, sign post W.S.W. 54.83' Gas, sign post W.N.W. 76.18'
		14	13	
	Buggy axle 30" Oak E. 30.5' 7" Elm N.W. 37.8' 6" Elm N.W. 48.1' 2" Oak S.S.W. 87.6' 30" Oak S.S.E. 89.1'			
	1-1/8" Iron, brick 43" Oak W.S.W. 54.95' 35" Oak N.E. 47.0'	Stone, plow point 3" Elm S.S.E. 38.8' 1-1/2" Iron N. 33.0'		

Stone, boat spike
T.P. N.E. 44'
16" Hickory S.E. 62'
P.P. S.W. 41.5'

COUNTY SURVEYOR'S RECORD,

TOWN Four NORTH, RANGE One East, MERIDIAN OF MICHIGAN.

SEC. 12 L-3



TOWN Four NORTH, RANGE One East, MERIDIAN OF MICHIGAN.

1	Gas pipe	Maple 2	575E	47	W-3
2	"	"	743E	61	"
3	"	"	542W	26	Stake 28
4	"	"	579E	143/2	" 25R. Oak 6 854 1/2 W 20 1/2
5	"	"	775E	67 1/2	Stem Hickory 12 586 W 25
6	"	"	504 1/2 W	21 1/2	" " 3 847 1/2 E 33
7	"	"	752E	24 1/2	26 Iron Stake Elm 2 310 W 29
8	"	"	571W	15 1/2	" " 2 Walnut 10 770 W 14 2
9					27 Stake No tree near.
10					
11	Gas pipe	Maple	4	7150 20' E	229 W-4
12	"	Elm	8	37 W	15 1/2
13	"	Tr. 6	2	56 1/2 W	2 1/2
14	"	"	5	375 E	143 1/2
15	Stone	"	5	326 W	42 1/2
16	"	R "	4	564 1/2 E	105 W-4
17					
18					
19					
20	Gas pipe	No tree			
21	Stone	Tr. oak 15	735E 65		W-5
22	"	Maple 3	732 1/2 W 57 1/2	Hickory 842E 100	
23					
24	Stone	Tr. 4	784W 47		L-5
25	"	Tr. 4	34 E	90 1/2	

INGHAM COUNTY, MICHIGAN.

TOWN Four NORTH, RANGE Q or East, MERIDIAN OF MICHIGAN.

Survey of east one half of Section No 12 T4N R1E Williamston
 from the evidence of persons who assisted Amos Jackson to plant
 the corner (21) while the witness trees yet remained. I take it for
 a starting point. The gr. sec post (1) I find correct and established
 it in a true line at equal distances between the sections corners
 (21) & (1), the later named corner (1) I locate by one of the U. S. witness
 trees the stump of which remains intact and is sound. The center
 gr. sec post (13) I locate by the witness tree given by Amos Jackson
 and the corner (27) & (2) is established by measurements as is
 also the corner (26). The corner (3) was established by Amos
 Jackson and from the statement of persons in the neighborhood
 the evidence is conclusive that it has been perpetuated ever since. The
 corner (2) is established by measurements and corrections from (3) to (1);
 also the line from (26) to (27) was carefully corrected as is also the case with
 the line from (12) to (2) and (20) & (27) were not witnessed as there
 was no trees available.

Surveyed for James Stoughton,
 Richard Perkins, C. E. Lockwood and others

Mar. 14th & 15th A. D., 1889

Geo. Batofard } Sworn
 Franklin Owen } Chairman

Recorded Mar 16th A. D. 1889

John. M. Casey Co. Surveyor.

Hillandale
TOWN Four NORTH, RANGE One E

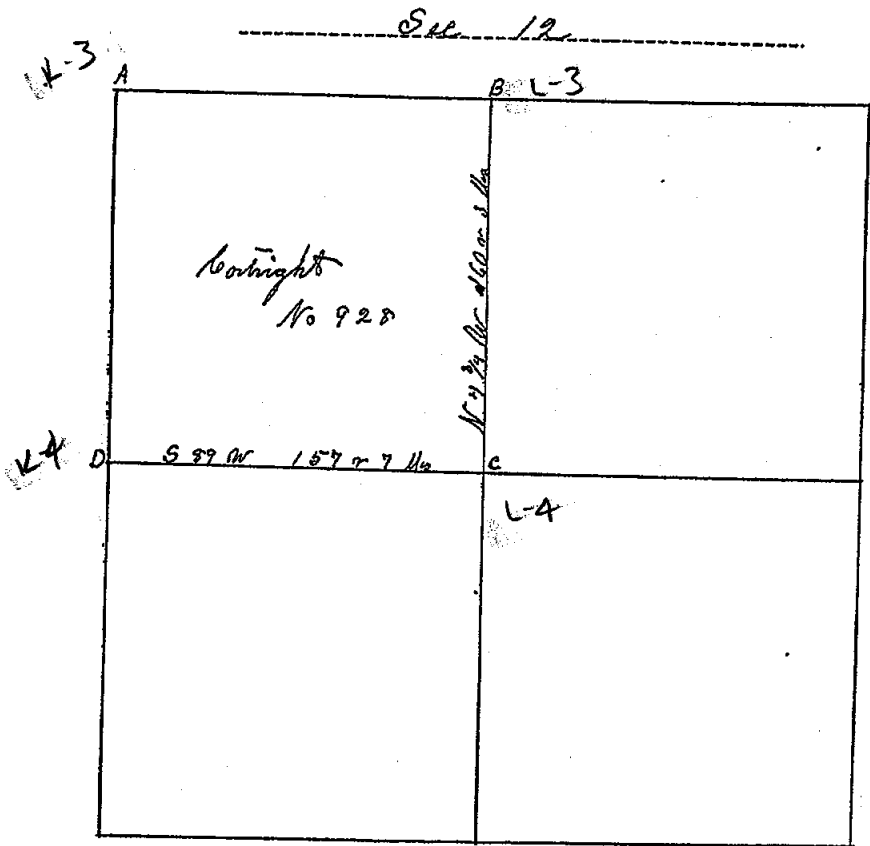
	<u>52</u>	<u>29</u>	<u>23</u>		<u>62 72</u>
6	5	4	3	2	1
7	8	<u>29</u>	10	<u>123 6</u>	<u>72</u>
18	17	16	15	<u>15 207</u>	14
19	<u>61</u>	21	22	23	<u>71 207</u>
20	20	21	22	23	24
30	29	28	27	26	25
<u>40</u>	<u>40</u>	33	34	<u>37</u>	<u>215</u>
31	32	33	34	35	30

Dunkirk Hill
TOWN One NORTH, RANGE One E

	<u>42</u>		<u>137</u>	<u>132</u>	<u>81</u>
6	5	4	3	2	1
<u>53 61</u>	8	9	10	<u>135</u>	12
<u>43</u>	17	<u>137</u>	15	<u>137 124</u>	<u>72</u>
18	17	16	15	14	13
19	20	21	22	<u>140 175</u>	<u>141 172</u>
<u>23</u>	29	28	27	<u>77</u>	<u>121 172</u>
30	29	28	27	26	25
<u>28</u>		<u>174</u>			<u>38</u>

COUNTY SURVEYOR'S RECORD.

TOWN *Irwin* NORTH, RANGE *One* East, MERIDIAN OF MICHIGAN.



P 274 Oct 2

TOWN *Irwin* NORTH, RANGE *One* East, MERIDIAN OF MICHIGAN.

- 1
- 2
- 3
- 4
- 5
- 6
- 7
- 8
- 9
- 10
- 11
- 12
- 13
- 14
- 15
- 16
- 17
- 18
- 19

24
25

A Oct 17 N 5 1/2 E 14 1/2 Sec L-3
 D 8 6 N 88 W 9
 K Oct 4 N 24 W 2 4 1/2
 B Oct 12 S 55 3/4 W 10 2 L-3
 G Oct 9 S 67 E 38 1/4 L-4
 H Oct 8 N 15 W 11
 P Oct 9 N 20 3/4 W 60 1/2
 D 3 12 S 37 1/2 E 96 L-4

INGHAM COUNTY, MICHIGAN.

TOWN *Town* NORTH, RANGE *One* East....., MERIDIAN OF MICHIGAN.

16 in by the true Meridian Var $2^{\circ} 58'$
 Surveyed and Recorded Feb 24 / 56
 by A Jackson Co Surveyor Ing Co Mich
 at corner to corner found by stamps of old writings by Jackson and new
 witness made W 0-5- S 26 W 46 1/2 N Yellow O 4 S 64 1/2 E 10 1/2 Sta
 March 14th 1889 John M. Carey County Surveyor.