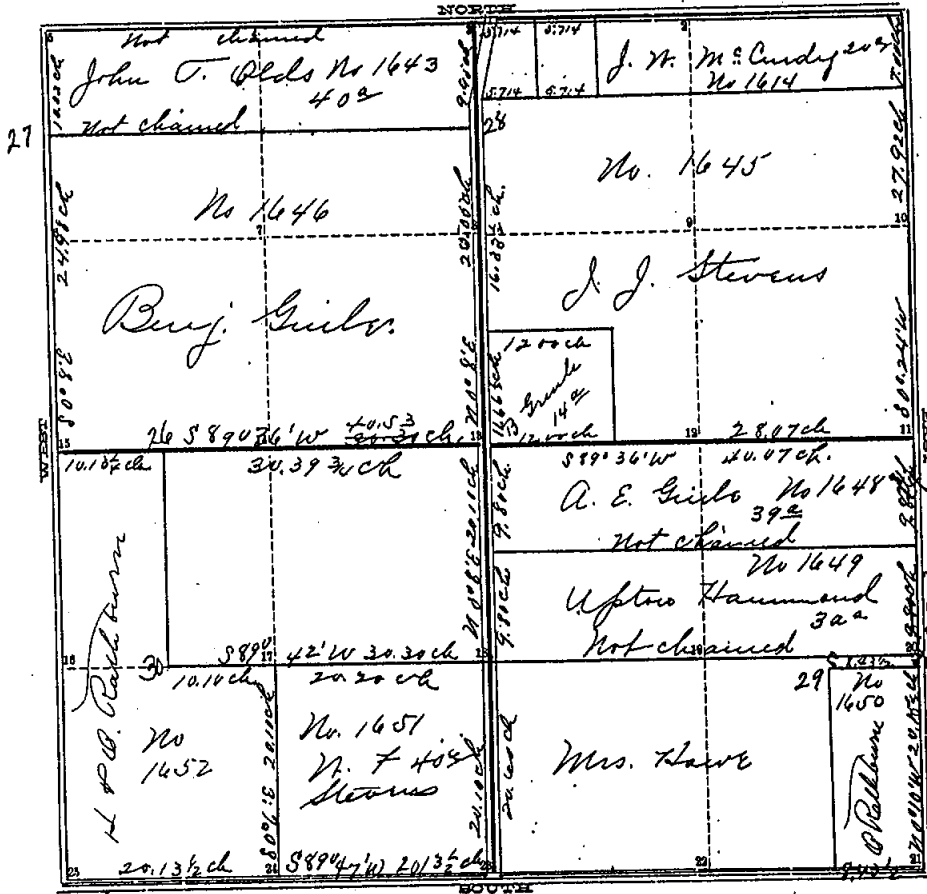


COUNTY SURVEYOR'S RECORD,

TOWN Thurs NORTH, RANGE One West, MERIDIAN OF MICHIGAN.

SEC. 4



H. C. Guile  
Upton Hammond  
Sewer  
Chairman.

TOWN Thurs NORTH, RANGE One West, MERIDIAN OF MICHIGAN.

Corners Described

- G-1 1 Stone B. Walnut 14 S 78 1/2 W 21 3/4 24 post v Stone 76 Trees
- 2 E-3 25 " post Stone Sugar 6 N 16 E 59 1/2
- F-1 3 Stone Sugar 8 N 51 E 132
- 3 " B. Oak 12 N 70 W 128 26 Stone Sugar 4 N 82 1/4 E 17 1/2
- 4 post along 11, 20. S 23 1/2 E 60 1/2 27 post Birch 15 N 89 E 4 1/2
- E-1 5 " N. Oak 4 " N 89 1/4 W 22 28 Stone Sugar 12 S 34 1/4 W 167 3/4
- 6 29 post Birch 5 S 6 E 37
- 7 30 " N. Oak 6 N 71 3/4 E 65
- 8
- 9
- 10
- G-2 11 original quarter post
- 12
- F-2 13 Stone Elm 18 N 23 W 211 1/4
- 14
- E-2 15 post Sugar 4 S 57 3/4 E 17
- 15 Iron 4 S 48 1/4 W 144 11 1/4
- 16
- 17 post Birch 6 S 47 1/2 E 15
- 17 " Elm 7 N 62 1/4 W 73 1/2
- 18 post Elm 20 S 22 E 101
- 19
- 20 post Sump etc 18 N 14 1/2 E 80 1/2
- G-3 21 " Sugar 12 S 41 E 38 1/2
- 22
- 23 post Elm 28 S 17 1/4 W 145 1/2
- F-3

INGHAM COUNTY, MICHIGAN.

177  
Book 2

TOWN Three North, RANGE One West, MERIDIAN OF MICHIGAN.

Survey of section No Four in Township No Three North of Range No One West, being subdivided according to the accompanying plat with letters of reference to corners which are described below as follows (See below plat)

The small letters indicate corners established but not witnessed. The distance between (20) corners is two rods or fifty links that amount being taken of from the north half of the quarter section in the division of the Howe Estate.

Run by the True County Meridian Var. allowed 1°22'E  
 Done Oct 13<sup>th</sup>, 14<sup>th</sup>, and 15<sup>th</sup> 1879

by  
 A. P. Drake  
 Co. Surv.

Recorded Oct 29<sup>th</sup> 1879.

April 13, 1935

The corner at 3 was found on this date. Iron surrounded by red brick-bats. (Old witness Sug. 8° N 51° E 132 chs. Okeh). Other witness gone. Set g.p. 33' S of 3 and on N & S 1/4 line. Quarter line is 31.4' E of NE cor and 31.2' E of SE cor. of house on N 40 ac of NW 1/4 Sec. 4.

W. E. J. J. J. J., Co. Surveyor.