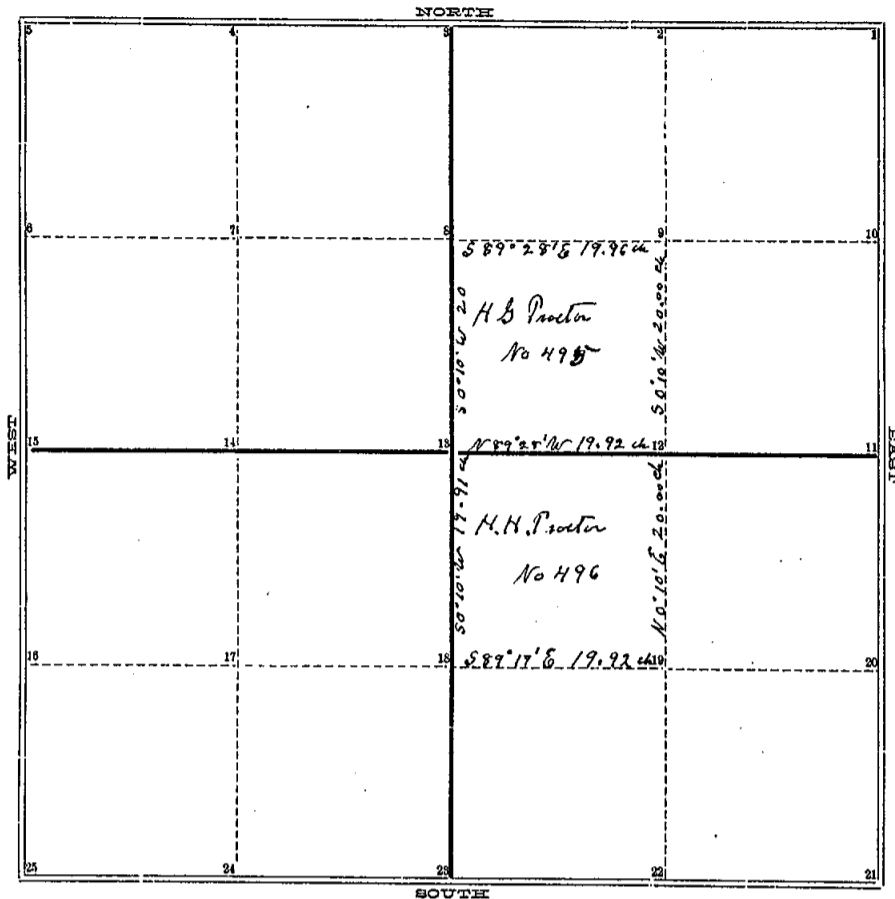


COUNTY SURVEYOR'S RECORD,

TOWN *Shu* NORTH, RANGE *One West*, MERIDIAN OF MICHIGAN.

SEC. 5



T 59 Vol 2

TOWN *Shu* NORTH, RANGE *One West*, MERIDIAN OF MICHIGAN.

- 1 24
- 2 25
- 3
- 4
- 5
- 6
- 7 Sycamore 50 S 52 E 10
- a 8 No Ash 16 N 13 W 21
Sugar 24 S 49 1/2 E 9
- 0 9 Birch 16 S 48 W 27 1/4
- 10
- 11 Birch 12 North 2
- c 12 D O 5 S 42 W 39
Sugar 20 N 87 E 5 1/4
- D 2 F 13 D O 22 S 47 W 21
- 14
- 15
- 16
- 17 Birch 4 N 55 1/2 E 26 1/2
- 8 18 Birch 18 S 54 1/2 E 15 1/2
Iron 5 N 5 1/2 E 25
- d 19 Birch 5 N 22 W 41 1/4
- 20
- 21

INGHAM COUNTY, MICHIGAN.

TOWN *Three* NORTH, RANGE *One West*, MERIDIAN OF MICHIGAN.

Run by the true Meridian Var 3° E

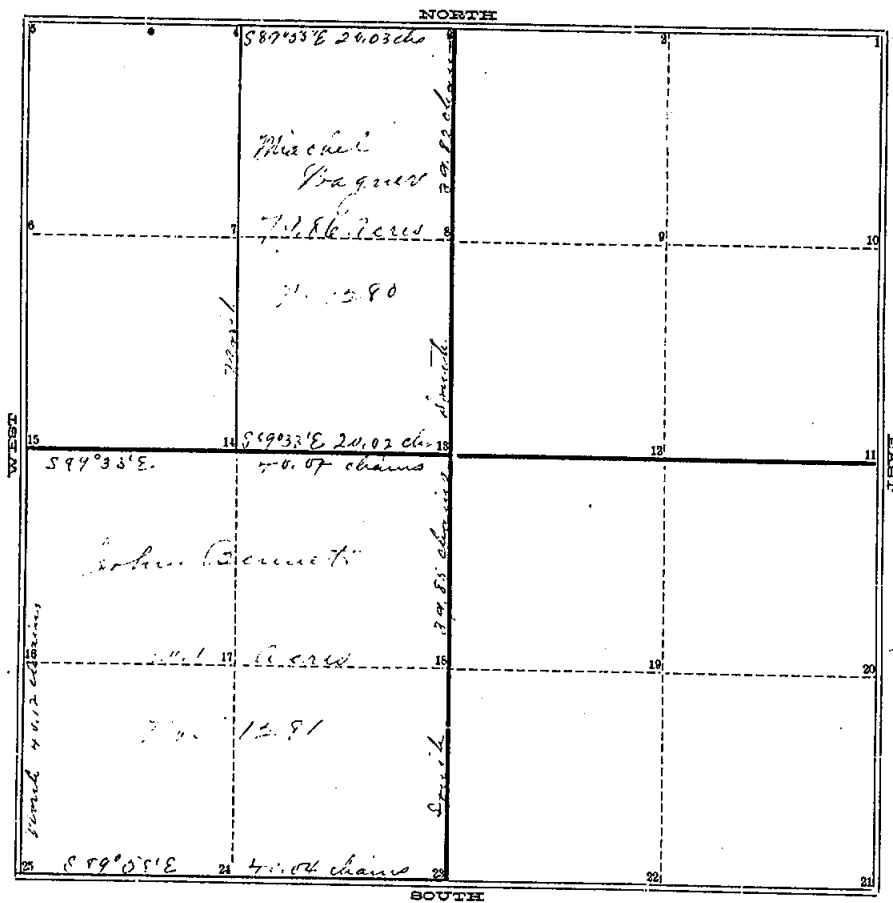
Surveyed by J. J. Brown Dep. Co. Surveyor Feb 16. 1848

Recorded by A. Jackson Co. Surveyor May 15th 1848

COUNTY SURVEYOR'S RECORD,

TOWN Three NORTH, RANGE One West, MERIDIAN OF MICHIGAN.

SEC. 8



TOWN _____ NORTH, RANGE _____, MERIDIAN OF MICHIGAN.

- 1
- 2
- 3
- 4
- 5
- 6
- 7
- 8
- 9
- 10
- 11
- 12
- 13
- 14
- 15
- 16
- 17
- 18
- 19
- 20

- 24
- 25

INGHAM COUNTY, MICHIGAN.

TOWN Three North, RANGE One West, MERIDIAN OF MICHIGAN.

Survey of the south west quarter and the east half of the
North west quarter of section 70 in township No Three North of
Range No One West

Beginning at "15" the quarter post
in the west line of said section see the following witness notes and
references to the accompanying plat
"1" Blue ash 10 in diam bears N 6 W 100 yds
"2" Blue ash 10 in diam bears N 87 1/2 E 58 yds
"3" Blue ash 12 in diam bears S 46 1/2 E 41 yds
"4" Blue ash 10 in diam bears N 51 W 56 yds
"5" Found by witnesses and measurements a stone at corner
marked J. B. the I reversed and from this stone an apple 3 in diam bears N 34 W 108 3/4 yds
"6" A post in the center of the road No trees marked S Lynn 20 in N 31 1/2 S 20 yds
do 4 in N 76 S 5 lbs a stone
"7" A post No trees near

and running thence south eighty nine degrees and thirty three
minutes east on the east and west quarter line forty chains and
four links to "8" to a post in the intersection of the quarter lines
Also set post at "14" the intersection of the line of lots. Thence
south on the north and south quarter line thirty nine
chains and eighty five links to "23" the quarter post in the
south line of the section. Thence north eighty nine degrees
and fifty eight minutes west on said south line forty chains
and four links to "25" the south west corner of the section.
Thence north on the west line of the section forty chains
and twenty links to "15" the place of beginning, containing
100.1 acres. Also on the north line of the section 26.03 chains
west of the quarter post "3" set the post "4". The line "14" "4"
was run too west.

Run by the true Meridian
Magnetic Variation 20 15' E
and Wisconsin, by T. J. Brown, Sup. Co. Surv., for Aug. Co., Mich.
Apr 30th 1868 & recorded Nov 12th 1868

Run at the request of Geo. Mallory agent for J. Ringer May 31st
1870 by T. J. Brown Co Surveyor.

INGHAM COUNTY, MICHIGAN.

TOWN Three NORTH, RANGE One West, MERIDIAN OF MICHIGAN.

Survey of the south west quarter of section No five in township No Three North of Range No. One West. Beginning at 15" the quarter east end of the west line of said section. See the following witness notes and references to the accompanying plat

C-2 1/2" Beech 14 in 8 50 1/2 E 16 links "13" a stone set for corner
"18" Ash 18 in 5 5 1/2 E 15 1/2 links "16" a post No trees

C-3 25" Ash and brick bats "23" Lym 20 N 31 E 20 links a stone is set for the corner

and running thence south eighty nine degrees and fifty two minutes east on the east and west quarter line thirty nine chains and eighty three links to "13" the intersection of the quarter lines. Thence south ten minutes east on the north and south quarter line seven chains and three links to "18" and set post. Then continued on the same bearings and line twenty chains and three links to "23" the quarter post in the south line of the section. Thence north eighty nine degrees and fifty minutes east on said south line forty chains and four links to "25" the south west corner of the section. Thence north eighty nine degrees and eight minutes east on the east line of the section twenty chains and seven links to "16" and set post. Thence continued on the same bearing and line twenty chains and seven links to "15" the place of beginning. Containing 160.16 Acres.

Thence from "16" to "18" north eighty nine degrees and forty three minutes east on the division line thirty nine chains and ninety three and a half links to the closing point.

Run by the true Meridian Magnetic Variation 2 1/2 E.

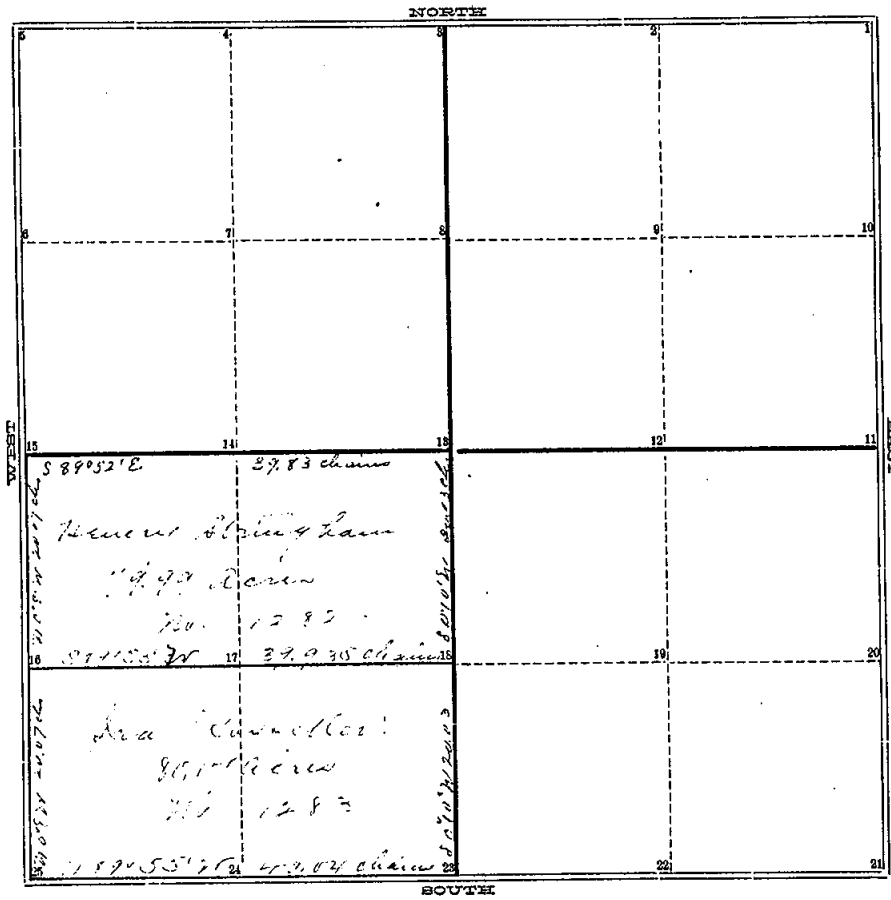
Surveyed for Ira Cross by H. J. Brown & Henry Stoughton May 1st 1868

Recorded Nov 12th 1868 by T. J. Brown, Dep. Co. Sur, Ing. Co, Mich.

COUNTY SURVEYOR'S RECORD,

TOWN Three NORTH, RANGE One East, MERIDIAN OF MICHIGAN.

SEC. 5



TOWN _____ NORTH, RANGE _____, MERIDIAN OF MICHIGAN.

- 1
- 2
- 3
- 4
- 5
- 6
- 7
- 8
- 9
- 10
- 11
- 12
- 13
- 14
- 15
- 16
- 17
- 18
- 19
- 20

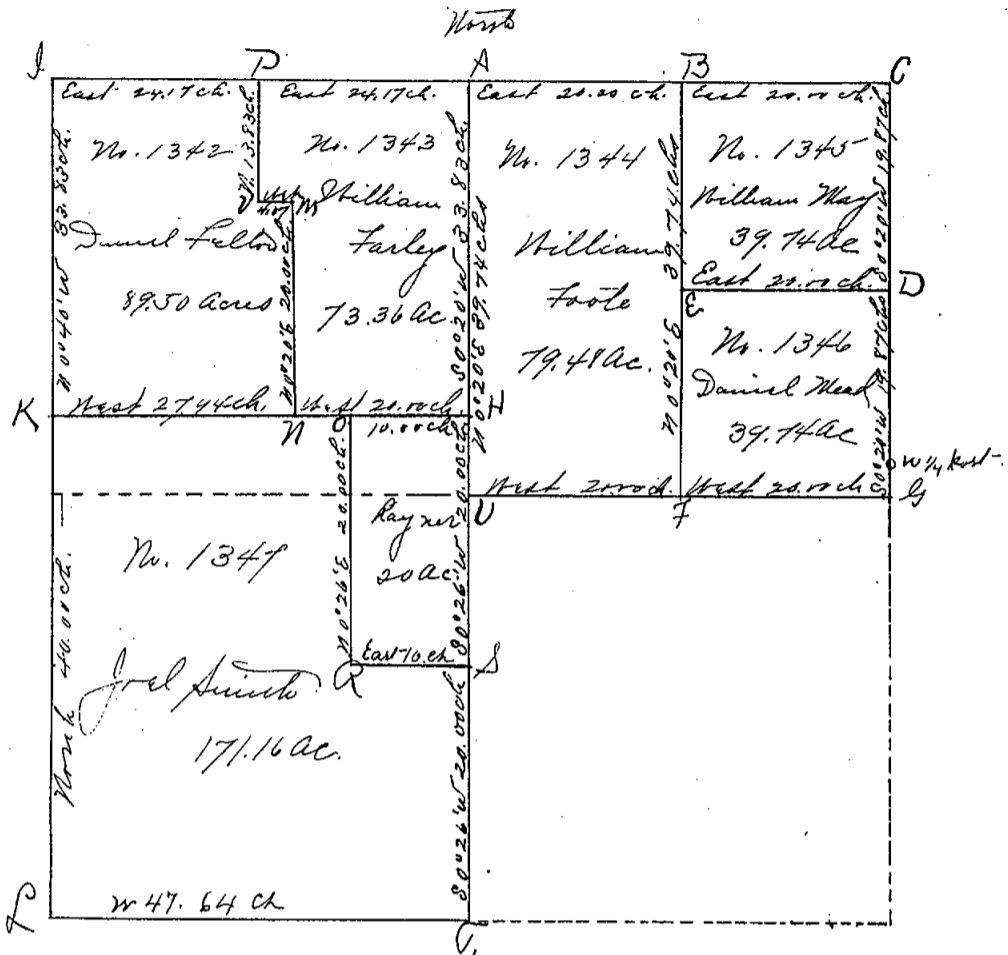
24

25

COUNTY SURVEYOR'S RECORD,

TOWN Three NORTH, RANGE One West, MERIDIAN OF MICHIGAN.

Section Six



Page 54, Vol 3

TOWN _____ NORTH, RANGE _____, MERIDIAN OF MICHIGAN.

1	24
2	25
3	
4	
5	
6	
7	
8	
9	
10	
11	
12	
13	
14	
15	
16	
17	
18	
19	

INGHAM COUNTY, MICHIGAN.

TOWN Three North, RANGE One West, MERIDIAN OF MICHIGAN.

Survey of Section No. Six except the southwest part in township No Three North of Range No. One West as represented in the accompanying plat the scale of which is 13.5 chains to the inch, where the names of owners, the number of acres owned by each, the bearings and distances of the lines and letters of reference to lines and corners are respectfully given

The corners are described as follows.

- A. a post from which an apple 4 m. diam. bears N 17 1/2° E 83 3/4 lks.
- B " " " " " " " " " " N 140° W 82 1/4 "
- C " " " " " " " " " " S 24 1/2° E 119 "
- D " " " " " " " " " " S 4 1/2° W 67 "
- E a stone set for corner D a post from which an Elm 3 m. diam. N 77° W 59 lks.
- F a post from which a Beech 6 in. diam. bears S 67° E 4 1/2 lks
- G " " " " " " " " " " N 56° W 52 3/4 "
- H, I, L, Q, R, S, T are corners having stones set to denote their respective positions.
- H. a post from which a Beech 16 in diam. bears N 42 3/4° W 19 lks
- I " " " " " " " " " " S 20° E 24 "
- K " " " " " " " " " " S 82 1/4° W 101 1/2 "
- L " " " " " " " " " " N 60 1/2° W 68 1/4 "
- M " " " " " " " " " " N 45 1/2° E 39 1/2 "
- N " " " " " " " " " " S 30 1/2° E 33 3/4 "
- O " " " " " " " " " " S 45 1/2° E 59 1/2 lks.
- P " " " " " " " " " " N 47 1/2° E 91 3/4 "
- Q " " " " " " " " " " N 30° E 6 1/2 "
- R " " " " " " " " " " S 42° E 38 "
- S " " " " " " " " " " S 67° E 70 1/2 "
- T " " " " " " " " " " N 65 1/2° E 42 1/2 "
- U " " " " " " " " " " N 89 3/4° E 46 1/2 "
- V " " " " " " " " " " N 22 1/2° E 33 "
- W " " " " " " " " " " N 55° E 7 "
- X " " " " " " " " " " S 49° E 49 "
- Y " " " " " " " " " " S 29° E 46 "
- Z " " " " " " " " " " S 40° W 6 1/2 "
- AA " " " " " " " " " " S 8 1/2° W 37 "

Run by the true Meridian Magnetic Variation 2 1/2° East.

Surveyed for those named in the plat Nov. 13th 1869 and Recorded Sept 25th 1870 by J. J. Brown

Deft. Robert, Sug. Co, Mich.

At K found stumps of bearings and flayed a four inch tile and on top of tile placed a stone J. H. Mullet, C. Surveyor.