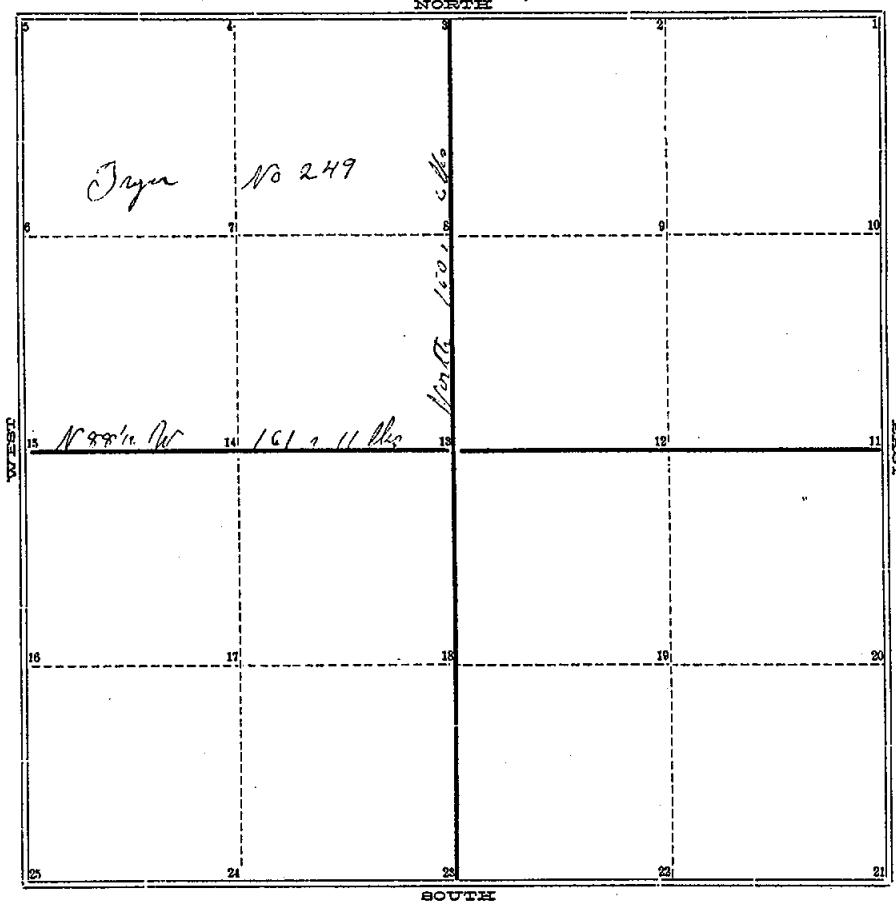


COUNTY SURVEYOR'S RECORD,

TOWN *Three* NORTH, RANGE *One West*, MERIDIAN OF MICHIGAN.

SEC. *Thirteen* 6



Page 62 Vol 1

TOWN *Three* NORTH, RANGE *One West*, MERIDIAN OF MICHIGAN.

- 1 24
- 2 25
- 3 *Bush 12 m N 44 E 13 lts* L-5
- 4 *Ironwood 4 m S 10 1/2 W 20 lts*
- 5 *Hickory 12 m N 35 E 20 lts*
- 6 *Ironwood 4 m N 65 1/2 W 11 lts*
- 7
- 8
- 9
- 10
- 11
- 12 *Lynx 15 m S 22 1/2 E 20 lts*
- 13 *Bush 8 m N 79 W 6 lts*
- 14 *Hickory 9 5 6 5 8 20 lts*
- 15 *Elm 24 1/60 W 10 lts*
- 16
- 17
- 18
- 19
- 20

## INGHAM COUNTY, MICHIGAN.

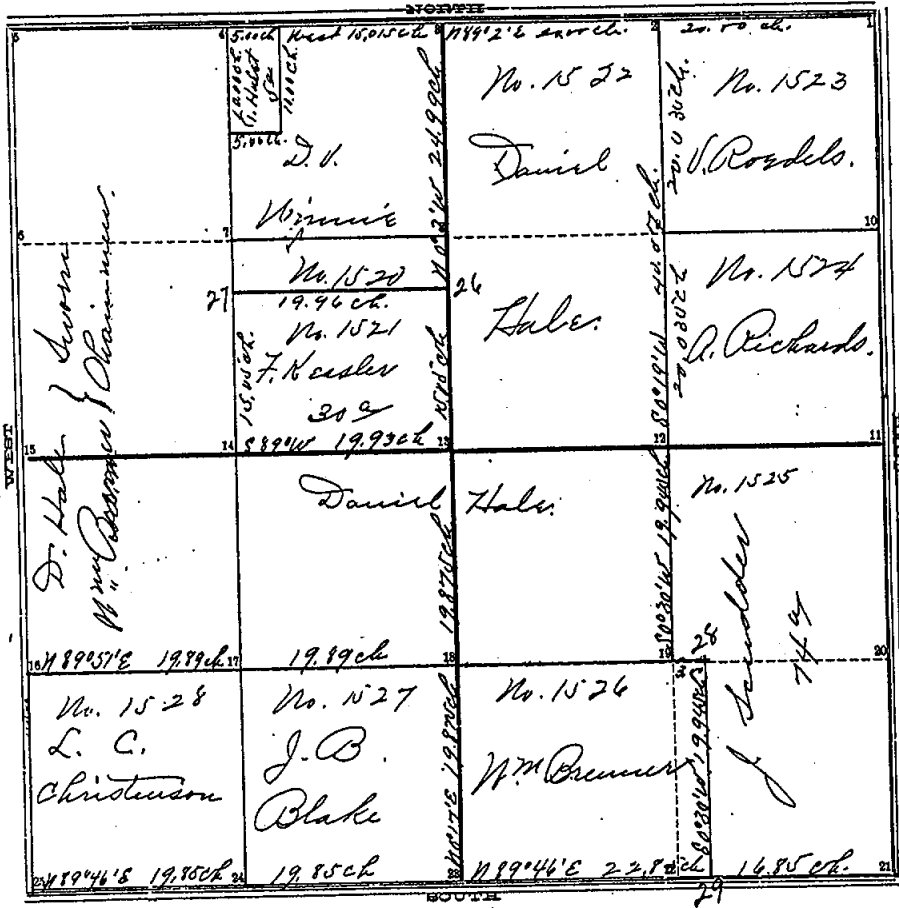
TOWN *Three* NORTH, RANGE *One West*, MERIDIAN OF MICHIGAN.

Run by the True Meridian No. 3/10 E  
Surveyed and Re-rodled July 12th 1843  
By A Jackson Co Surveyor

COUNTY SURVEYOR'S RECORD,

TOWN Three NORTH, RANGE One West, MERIDIAN OF MICHIGAN.

SEC. 14



TOWN Three NORTH, RANGE One West, MERIDIAN OF MICHIGAN.

Corners Described.

Course	Timber	Diamy	Bearing	Dist	Course	Timber	Diamy	Bearing	Dist	
1	a drive	Apple	7 54 E	33 1/2	22	a drive	Rush	6	87° E	120
2	"	Elm	7 1/2 W	50 1/2	25	a post	S. W. C.	12	S 82° E	106
3	"	Rush	5 15 1/2 W	61 1/2	26	Post	No bearings taken			
4	"	Elm	7 55 1/2 W	45	27	"	"	"	"	
5	"	Elm	7 48 E	72	28	Post	Sugar	8	S 67 1/2 W	124 1/2
6	"	"	7 73 1/2 W	72 1/4	29	stone	No bearings			
7										
8										
9	Post	Elm	7 34 E	112 1/2						
10	Iron	Elm	7 20 E	53 1/2						
11	a drive	S. W. C. of S. H. road	7 29° 40' E	176						
12	a post	Rush	5 56	61 1/2						
13	"	Rush	7 89 W	152 1/2						
14	"	Elm	7 29 1/2 W	66						
15	"	Maple	7 12 1/2 E	6						
16	"	"	5 26 1/2 W	6						
17	"	"	7 46 1/2 E	3						
18	"	"	5 37 1/2 W	13						
19	"	"	7 02 W	2						
20	"	"	8 5 E	15						
21	"	"	7 38 E	66 3/4						
22	"	"	7 33 W	87 1/2						
23	"	"	7 22 W	60 1/2						
24	"	"	7 33 E	73 1/2						
25										
26										
27										
28										
29										
30										
31	a post	Elm	8 45 1/2 W	55 1/2						
32										
33	a stone	Sugar	7 4 1/2 E	162 1/2						

## INGHAM COUNTY, MICHIGAN.

TOWN Three NORTH, RANGE One West, MERIDIAN OF MICHIGAN.

Survey of section No Fourteen in Township No Three north  
 of Range No One West as shown in the accompanying diagram  
 (the scale of which is 13 chains to one inch) in which the names of owners,  
 the bearings and lengths of the lines measured, the relative position  
 of the land as described, position of roads which are shown by red  
 lines, letters of reference to lines and corners are respectively given.  
 Note: At (23) a corner had previously made by T. J. Brown (see Page 8<sup>th</sup>)  
 which varies some from the one here recorded. But I think this one right  
 on account of the way being clear, that was then full of timber &c.

The corners (2) (12) (13) were established by W. Jackson (see Vol 2  
 Page 171) and were readily found and perpetuated.

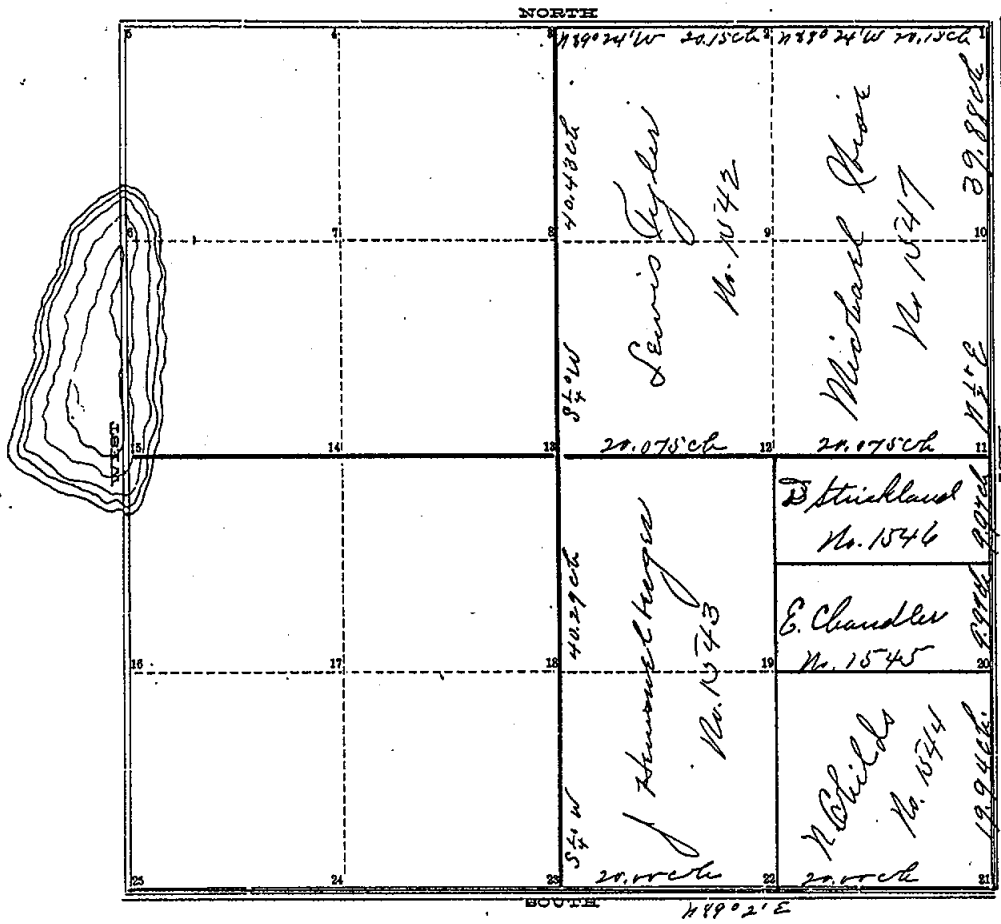
Run by the true Meridian

Surveyed May 24<sup>th</sup> and 25<sup>th</sup> 1877 & Recorded June 15, 1877.  
 by A. P. Drake  
 Co. Surv.

COUNTY SURVEYOR'S RECORD,

TOWN Three NORTH, RANGE One West, MERIDIAN OF MICHIGAN.

SEC. 11



TOWN Three NORTH, RANGE One West, MERIDIAN OF MICHIGAN.

The corners are described as follows

Corners	Timber.	Drum.	Bear.	Chs.
1	a stone Elm	12	S 45 W	110 1/2 22
2	a post Elm	14	N 29 1/2 E	110 3/4 25
3	a post Hickory	5	N 4 1/2 E	406 1/2
4	a post Tann.	10	S 32 W	71
5	" "	10	S 42 W	64
6				
7				
8				
9				
10	a post sugar	6	S 70 1/2 E	85 1/2
11	" "	4	S 20 1/2 E	38 1/2 K-4
12	" "	26	S 67 E	13
13	" "	10	N 20 1/2 W	17 1/2
14	" "	4	N 46 1/2 E	23
15				
16				
17				
18				
19	a post Elm	5	N 12 1/2 E	51
20	" "	10	S 73 1/2 E	101 1/2
21	a stone N.W. Cor. Church	10	N 70 1/2 E	73 1/2 K-5
22	" "	4	S 17 1/2 W	78 1/2
23	" "	2	N 20 1/2 W	51 1/2
24	a stone Beech	10	S 15 1/2 W	61 1/2
25	" "	6	N 55 1/2 W	68

## INGHAM COUNTY, MICHIGAN.

TOWN Three NORTH, RANGE One West, MERIDIAN OF MICHIGAN.

Survey of the east-half of section No. Eleven in Township No. Three North of Range No. One West as shown by the accompanying diagram on a scale of 13 chains to one inch, to which the bearings and lengths of lines, the names of owners and letters of reference to the corners described below are respectively given.

Note: The east and quarter line was not run across the section as the west quarter post is in the lake and not accessible therefore the corners (3)(12)(19) may be too far north or south as the case might be in running the line across the section.

The quarter post (23) is 34 links south of a right line between the section corners but being the original corner it can not be changed. The corners (3) & (11) were lost and reestablished according to law.

Run by the true Meridian Mag. Var.  $1^{\circ}52' E$ .

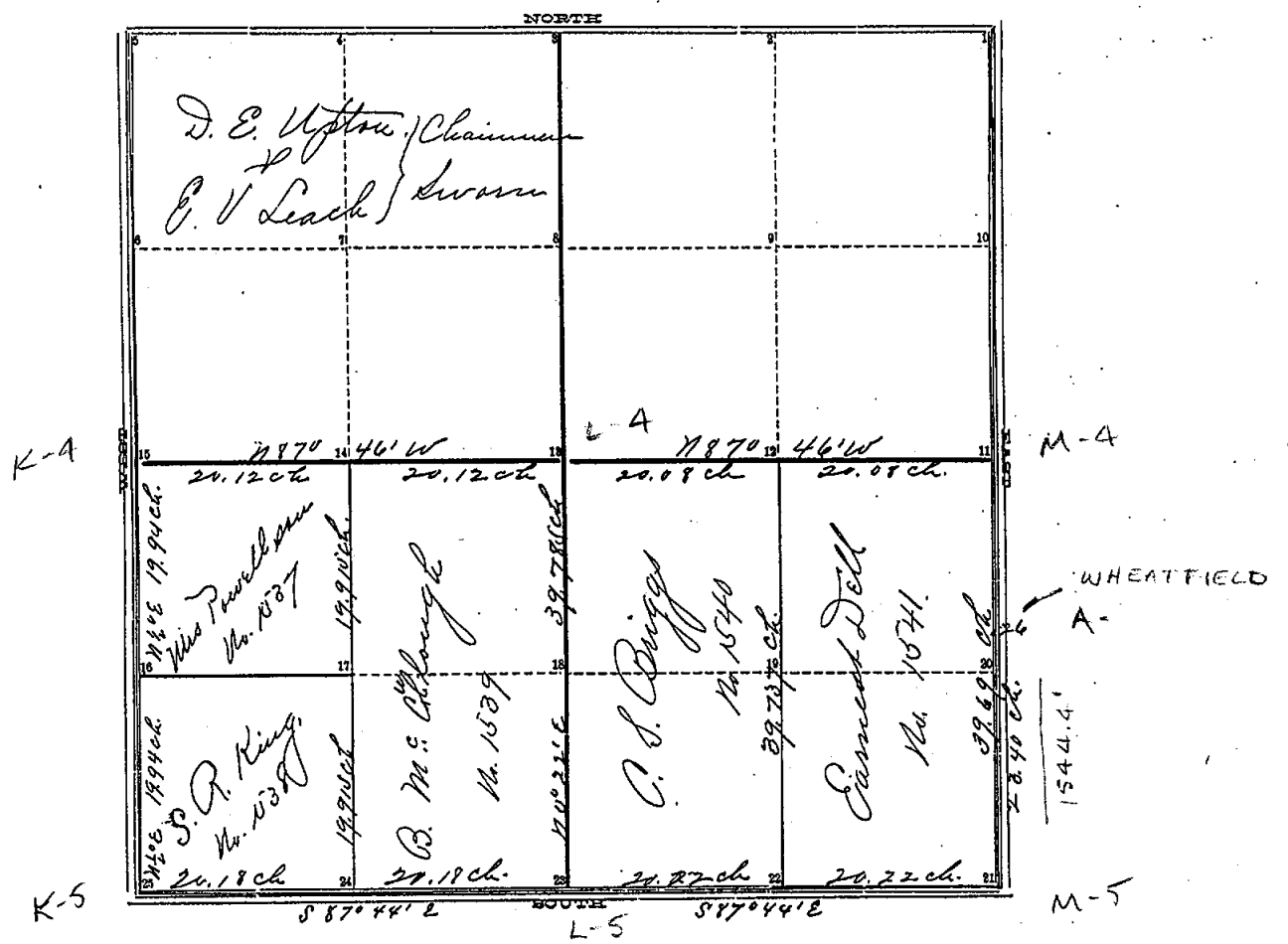
Surveyed June 5<sup>th</sup> 1877

Recorded Feb 15<sup>th</sup>, 1878. by A. P. Drake  
Colum.

COUNTY SURVEYOR'S RECORD,

TOWN Three NORTH, RANGE One West, MERIDIAN OF MICHIGAN.

SEC. 12



TOWN Three NORTH, RANGE One West, MERIDIAN OF MICHIGAN.

The corners are described as follows

corner,	Truher	Diem	Bearing	Dist.	Corner.	Truher.	Diem.	Bearing.	Dist.
1	24	Stone	Sugar	8	158 1/2 E	190 1/2			
2	"	"	n.w. cor. of chert hill	3	870 1/2 E	234 1/2			
3	Stone set for corner.		Sugar	3	756 E	77 1/2			K-5
4									
5									
6									
7									
8									
9									
10	a post mark	16	731 1/2 W	25					
11	" "	Branch	16	S 33 1/2 W	102 1/2				M-4
12	a post	Sugar	4	780 2/3 W	10 1/2				
13	a post	Cherry	8	549 1/2 W	44 3/4				
14	" "	Sugar	8	754 E	27 1/4				L-4
15	a post	B. Walnut	10	S 38 1/4 W	52 2/3				
16	a post	Sugar	6	S 78 1/2 E	83				
17	" "	" "	4	S 81 1/2 E	38				
18	" "	n.w. cor. of chert hill	6	S 73 1/2 E	101 1/2				K-4
19	" "	Sugar	3	720 W	101				
20	" "	Sugar	10	731 1/2 W	26				
21	Stone with small hole in top for corner								M-5
22	Runner stone	Apple	3	714 1/2 W	77				
23	" "	" "	6	S 33 E	86 1/2				
24	" "	Sugar	14	S 1/4 W	39				
25	" "	" "	12	S 77 1/2 E	65				L-5

INGHAM COUNTY, MICHIGAN.

153

TOWN *Three* NORTH, RANGE *One West*, MERIDIAN OF MICHIGAN.

Survey of the south half of section No Twelve in Township No Three North of Range No One West, as represented by the accompanying diagram (drawn to a scale of 13 chains to one inch) by which the bearings and distances of the lines, the names of owners, and the letter of reference to line and corners, are respectively given.

Run by the true Meridian      Mag. Var  $1^{\circ}52'$  East  
Surveyed Jan 10<sup>th</sup> & 11<sup>th</sup> 1878      Recorded Feb. 15<sup>th</sup> 1878  
by      A. P. Drake  
Cofurn.