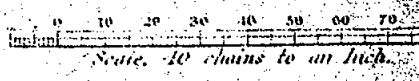
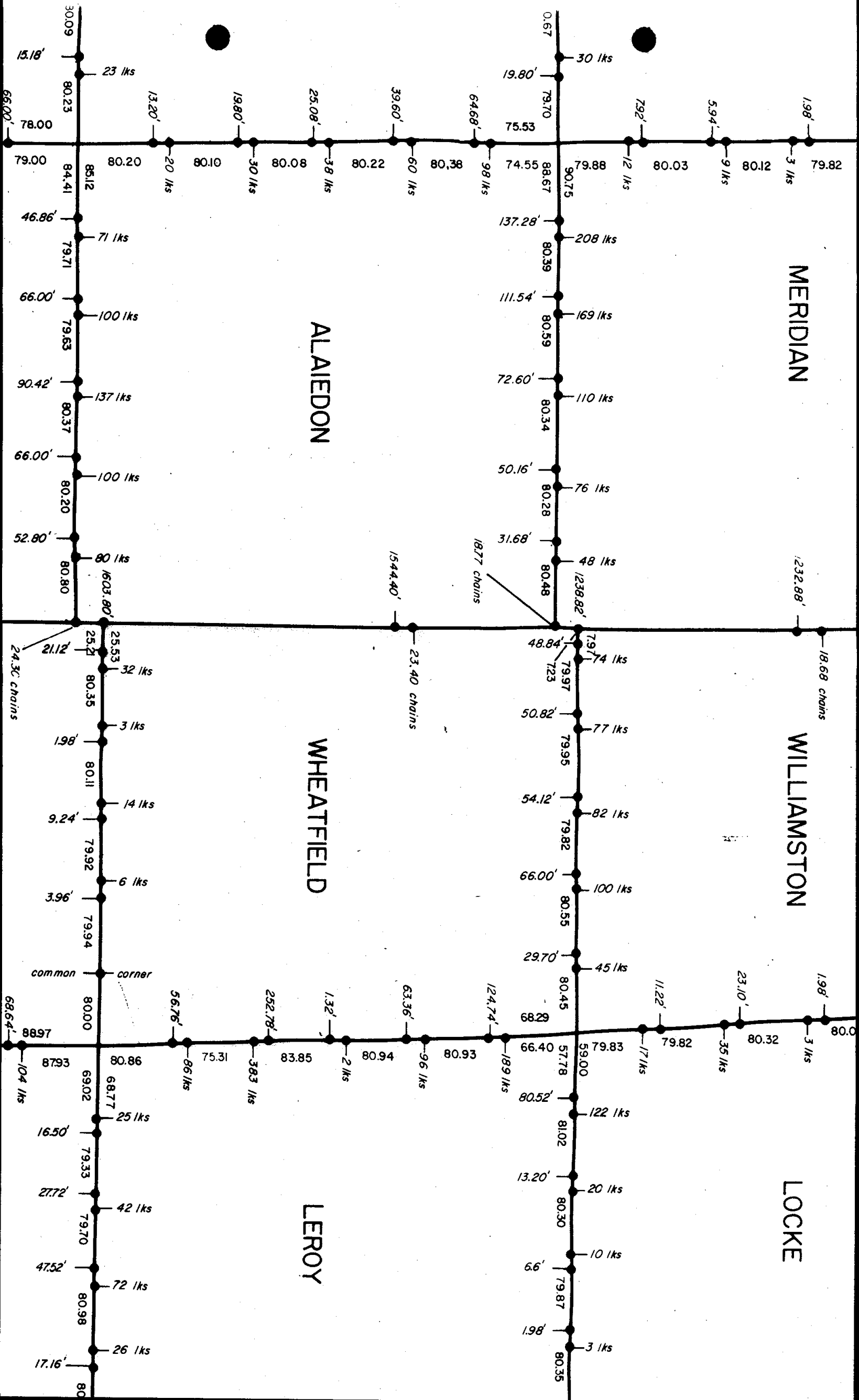


Deputy Surveyor:

ALAIEDON TWP.



I certify that the above is a true copy of the original
 Original plat in this office
 Surveyor General's Office
 Dated April 2 1854
 Charles S. Allen



MERIDIAN

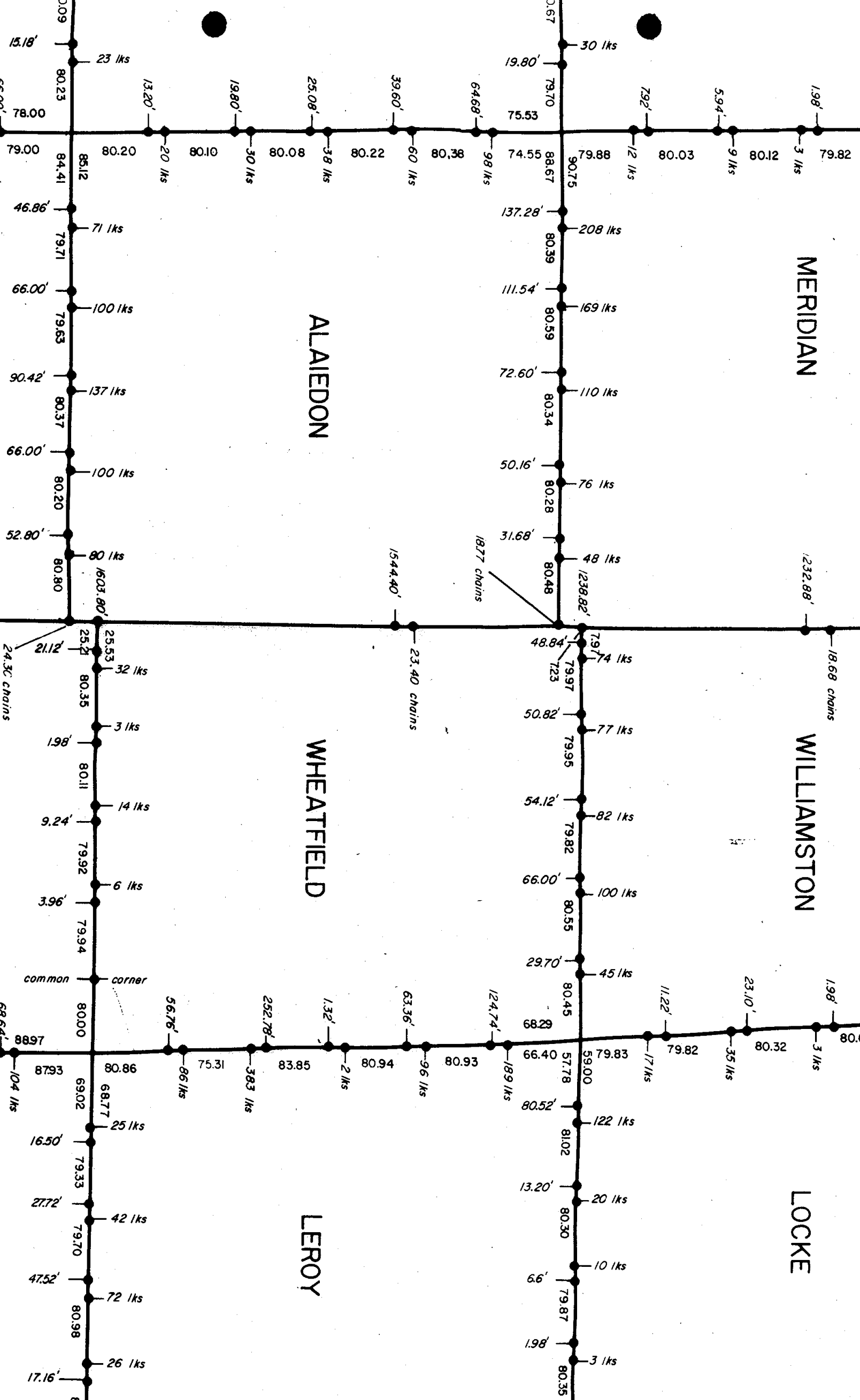
WILLIAMSTON

LOCKE

ALAIEDON

WHEATFIELD

LEROY



30.09 15.18' 80.23 23 lks 78.00 66.00' 79.00 84.41 85.12 80.20 20 lks 80.10 13.20' 19.80' 25.08' 38 lks 80.08 30 lks 80.22 60 lks 39.60' 80.38 98 lks 64.68' 75.53 0.67 19.80' 30 lks 79.70 79.88 79.88 12 lks 5.94' 1.98' 79.82 3 lks 80.12 9 lks 80.03 80.39 208 lks 90.75 137.28' 80.39 111.54' 80.59 169 lks 72.60' 80.34 110 lks 50.16' 80.28 76 lks 31.68' 80.48 48 lks 1238.82' 1877 chains 1232.88' 18.68 chains 79.97 74 lks 48.84' 723 50.82' 77 lks 79.95 54.12' 82 lks 79.82 66.00' 100 lks 80.55 29.70' 45 lks 80.45 68.29 11.22' 17 lks 79.82 23.10' 35 lks 1.98' 3 lks 80.32 80.0 80.86 66 lks 56.76' 252.78' 363 lks 1.32' 2 lks 80.94 96 lks 63.36' 80.93 124.74' 189 lks 66.40 57.78 59.00 79.83 80.52' 122 lks 81.02 13.20' 20 lks 80.30 10 lks 6.6' 79.87 1.98' 3 lks 80.35 88.97 104 lks 87.93 69.02 68.77 25 lks 16.50' 79.33 42 lks 27.72' 79.70 47.52' 72 lks 80.98 17.16' 80