

L 16 pg 48

EXAMINED AND APPROVED

Date MAY 8, 1953

John B. Martin
John B. Martin,
AUDITOR GENERAL

Paul V. Rumpser
Paul V. Rumpser,
Professional Engineer

BROOKSIDE HILLS

A subdivision on part of the West Fractional 1/4 of Section 7, T3N, R1W,
Alaledon Township, Ingham County, Michigan

Scale: 1" = 150'
All dimensions are in feet and decimals thereof

DEDICATION

KNOW ALL MEN BY THESE PRESENTS, that we, Paul V. Rumpser, and Ruth E. Rumpser, his wife, as mortgagors, and East Lansing State Bank, A Michigan Corporation by Arthur J. Clark, President, and Thomas B. Schepers, Cashier, Mortgagors,

as proprietors, have caused the land embraced in the annexed plat to be surveyed, laid out and platted, to be known as BROOKSIDE HILLS, a Subdivision on part of the West Fractional 1/4 of Section 7, T. 3 N., R. 1 W., Alaledon Township, Ingham County, Michigan.

and that the streets and alleys as shown on said plat are hereby dedicated to the use of the public.

Signed and Sealed in the presence of
Donald E. Waldren (Witness) *Paul V. Rumpser* (R. S.)
J. A. Allen (Witness) *Ruth E. Rumpser* (R. S.)
Arthur J. Clark (President)

Thomas B. Schepers (R. S.)
Thomas B. Schepers (Cashier)

ACKNOWLEDGMENT

STATE OF MICHIGAN
County of Ingham
On this 6th day of May, 1953, before me, a Notary Public in and for said County, personally came the above named Paul V. Rumpser and Ruth E. Rumpser known to me to be the persons who executed the above dedication, and acknowledged the same to be their free act and deed.
Paul V. Rumpser
Notary Public, Ingham County
My Commission expires December 1, 1953

ACKNOWLEDGMENT

STATE OF Michigan
County of Ingham
On this 6th day of May, A.D. 1953, before me, a Notary Public in and for said county appeared Arthur J. Clark and Thomas B. Schepers to me personally known, who being each by me duly sworn did say that they are the President and Cashier respectively of the East Lansing State Bank, a Michigan corporation, and that the seal affixed to said instrument is the corporate seal of said corporation and that said instrument was signed and sealed in behalf of said corporation by authority of its Board of Directors and the said Arthur J. Clark and Thomas B. Schepers acknowledged said instrument to be the free act and deed of said corporation.
Arthur J. Clark
Notary Public, Ingham County
My Commission expires December 1, 1953

DESCRIPTION OF LAND PLATTED

The land embraced in the annexed plat of BROOKSIDE HILLS, a Subdivision on a part of the West Fractional 1/4 of Section 7, T. 3 N., R. 1 W., Alaledon Township, Ingham County, Michigan is described as follows:

Beginning on the Section line at a point North 1170.6 feet from the S.W. corner of Section 7, T. 3 N., R. 1 W., Alaledon Township, Ingham County, Michigan, then on the Section line North 1598.5 feet, thence East 300.0 feet, thence South 1597.75 feet, thence S. 89° 51' W., 300.0 feet to the point of beginning.

SURVEYOR'S CERTIFICATE

I hereby certify that the plat hereon delineated is a correct one and that permanent metal monuments consisting of bars not less than one-half inch in diameter and 48 inches in length, or shorter bars of not less than one-half inch in diameter tapered over each other at least 6 inches with an overall length of not less than 48 inches, secured in a concrete cylinder of least 4 inches in diameter and 48 inches in depth have been placed at points marked (1, 2, 3, 4, 5, 6, 7, 8, 9, 10, 11, 12, 13, 14) thereon shown of all angles in the boundaries of the land platted, at all the intersections of streets, intersections of alleys, or of streets and alleys, and at the intersections of streets and alleys with the boundaries of the plat as shown on said plat.

Clyde K. Stephens
Registered Land Surveyor & Registered Professional Engineer
Clyde K. Stephens

APPROVAL BY BOARD OF COUNTY ROAD COMMISSIONERS

This plat has been examined and was approved on the 4th day of May, 1953 by the Ingham County Board of Road Commissioners.

Roy B. Moore (Chairman)
Guy C. Hull (Member)
Eroy D. Duncker (Member)

APPROVAL BY COUNTY PLAT BOARD

This plat was approved on the 9th day of May, 1953 by the Ingham County Plat Board.

Miss B. Humphreys (County Register of Deeds)
C. Ross Hilliard (County Clerk)
Frederic D. Farber (County Treasurer)
Gerald L. Graham (County Drain Commissioner)

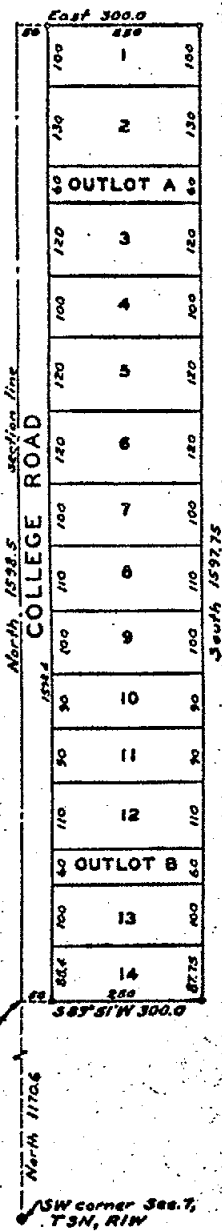
MUNICIPAL APPROVAL

This plat was approved by the Township Board of the Township of Alaledon at a meeting held May 2, 1953 by *Lyle Osterle* (Clerk)

COUNTY TREASURER'S CERTIFICATE

Office of County Treasurer, Ingham County, Michigan
I hereby certify, that there are no tax liens or other claims on the lands described hereon, and that there are no tax liens or other claims on said lands for the five years preceding the 6th day of May, 1953, and that the taxes for said period of five years are all paid, as shown by the records of this office.

Frederic D. Farber
Frederic D. Farber, Deputy (County Treasurer)



REGISTER OF DEEDS
Ingham County, Mich.
Received for Record the 12th day of May, 1953 at 8 o'clock A.M. and recorded in Liber 46 of Plat on page 48
Miss Paul Humphreys
Register of Deeds

ORIGINAL

SYCAMORE SITES SUBDIVISION

PART OF THE SW 1/4 OF SECTION 7, TOWN 3 NORTH, RANGE 1 WEST, ALAIEDON TOWNSHIP, INGHAM COUNTY, MICHIGAN.

DEDICATION

KNOW ALL MEN BY THESE PRESENTS, That Mr. Michael Pekrul as proprietor, and Myrtle M. Pekrul, his wife, have caused the land embraced in the annexed plat to be surveyed, laid out and platted to be known as Sycamore Sites Subdivision, part of the SW 1/4 of Section 7, Town 3 North, Range 1 West, Alaiadon Township, Ingham County, Michigan and that the Streets, Roads and Drives are hereby dedicated to the use of the public.

Signed and Sealed in presence of
Michael Ekholm (S.S.)
MICHAEL PERKUL
Myrtle M. Pekrul (S.S.)
MYRTLE M. PERKUL
John M. Marlett
JOHN M. MARLETT
James Casey
JAMES CASEY

STATE OF MICHIGAN } S.S.
County of Ingham }

On this 25th day of April 1955, before me, a Notary Public in and for said County, personally came the above named Michael Pekrul and Myrtle M. Pekrul, his wife, known to me to be the persons who executed the above dedication and acknowledged the same to be their own free act and deed.

John M. Marlett
JOHN M. MARLETT
Notary Public, Ingham County.
My Commission expires July 15, 1956

MUNICIPAL APPROVAL

This plat was approved by the Township Board of the Township of Alaiadon at a meeting held August 17, 1955

Lyle Osterle
LYLE OESTERLE
Twp. Clerk

COUNTY ROAD COMMISSION

This plat has been examined and was approved on the 1st day of July 1955 by the Ingham County Board of Road Commissioners.

LeRoy D. Douchel Chairman
LEROY D. DOUCHEL
Ray B. Moore Member
RAY B. MOORE
Ward Vicary Member
WARD VICARY

COUNTY TREASURER

Office of County Treasurer, Ingham County.
I hereby certify that there are no tax liens or titles held by the State on the lands described herein and that there are no tax liens or titles held by individuals on said lands for a period of five years preceding the 31st day of August 1955 and that the taxes for said period of five years are paid as shown by the records of this office.
This certificate does not apply to taxes, if any, now in process of collection by Township, City or Village collecting officers.

Edna B. Michitach Deputy County Treasurer
EDNA B. MICHITACH

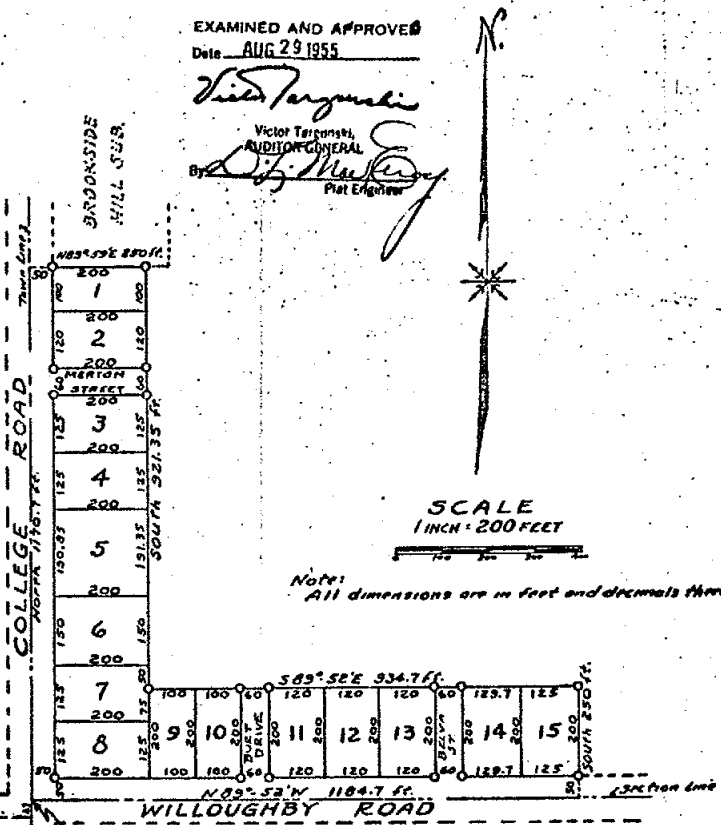
COUNTY PLAT BOARD

This plat was approved on the 24 day of August 1955

Wm. G. Williams Register of Deeds
WM. G. WILLIAMS
Wm. Williams County Clerk
WM. WILLIAMS
Edna B. Michitach Deputy County Treasurer
EDNA B. MICHITACH
Wm. G. Williams County Drain Comm'r
WM. G. WILLIAMS

EXAMINED AND APPROVED
Date AUG 29 1955

Victor Targanski
Victor Targanski,
AUDITOR GENERAL
Plat Engineer



Note: All dimensions are in feet and decimals thereof.

DESCRIPTION

The land embraced in the annexed plat of Sycamore Sites Sub., part of the SW 1/4 of Section 7, Town 3 North, Range 1 West, Alaiadon Township, Ingham County, Michigan is described as follows: Commencing at the SW Corner of Section 7, Town 3 North, Range 1 West, Alaiadon Township, Ingham County, Michigan, thence North 1170.7 ft., thence N89°52'E 250 ft., thence South 321.35 ft., thence S89°52'E 934.7 ft., thence South 250 ft., thence N89°52'W 1184.7 ft., to the point of beginning. Consisting of 15 lots numbered 1 to 15 incl.

SURVEYOR'S CERTIFICATE

I hereby certify that the plat herein delineated is a correct one and that permanent metal monuments consisting of bars not less than one-half inch in diameter and 36 inches in length encased in a concrete cylinder, at least 4 inches in diameter and 36 inches in length have been placed at points marked thus (O) at all points in the boundaries of the land platted, at all intersections of streets and at intersections of streets with the boundaries of the plat as shown on said plat.

Laverne J. Hendry
LAVERNE J. HENDRY
Registered Land Surveyor

REGISTER OF DEEDS
Ingham County, Mich.
Received for Record this 30 day
of August 1955 at 8 o'clock
A.M. and recorded in Liber 19
of Plats on page 5
Wm. G. Williams
Register of Deeds

