

MONUMENTED CORNER REPORT

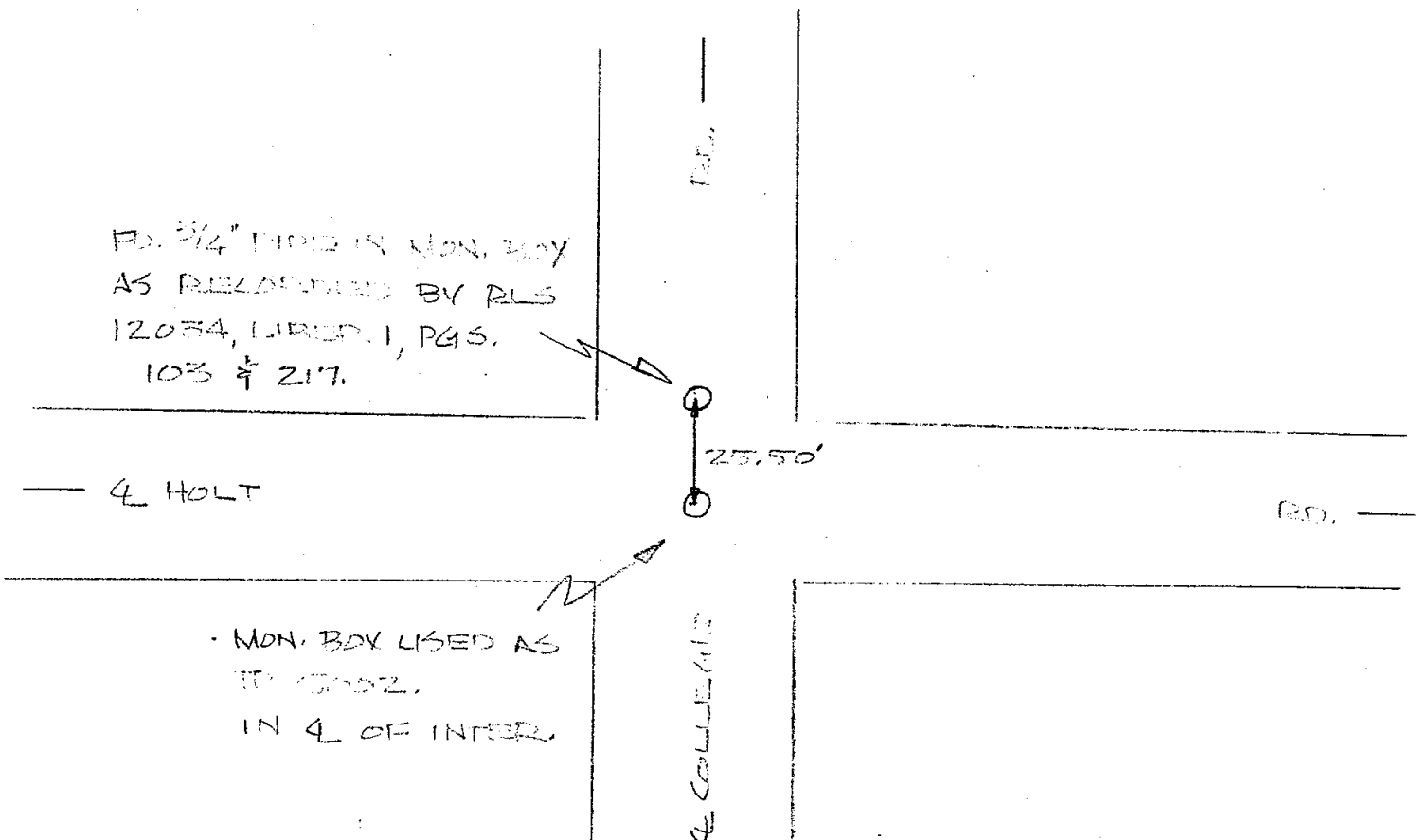
TECH. SUP'R. L. BEVAN TOWNSHIP ALABAMA
 COMPANY DALASO CORNER CODE A-7
 FIELD SQUAD 3100000 RECORDED CORNER YES
 DATE 8-10-78 ROAD NAME FRONT OF COLLEGE

Sketch, witness, and describe monuments found, and location relative to traverse point and centerline of road.



FD. 3/4" PIPE IN MON. BOX AS RECORDED BY
 RLS 12034 LIBER. 1, PGS. 103 & 217.

USED & CHECKED MONUMENTED



TRAVERSE POINT WITNESS REPORT

Traverse Point No. 5020

Tech. Sup'r. L. Boyan

Township Alajedon

Company Colaris

Recorded Corner Code C-7

Field Squad 25 - Vashinsky

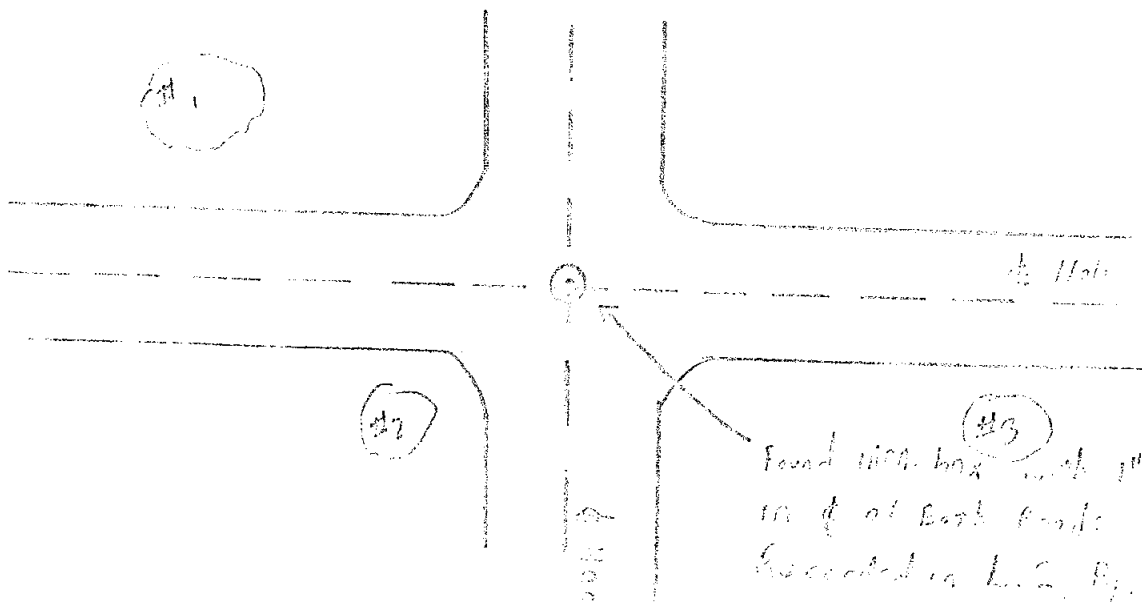
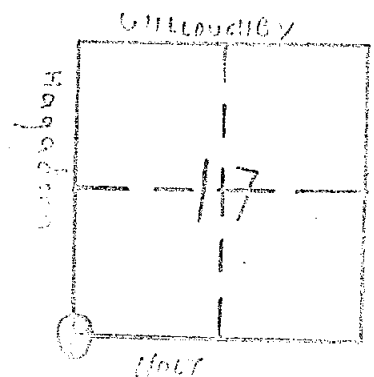
Date 3-1-74

Sketch and describe roads, monuments found or set, and witness established:

1) Found 303 TAG[#] 1762.4 south side ^{20' W} ~~road~~
 N 60° W 105.75'

2) Nail east side 3'd. Maple
 S 60° W 55.32'

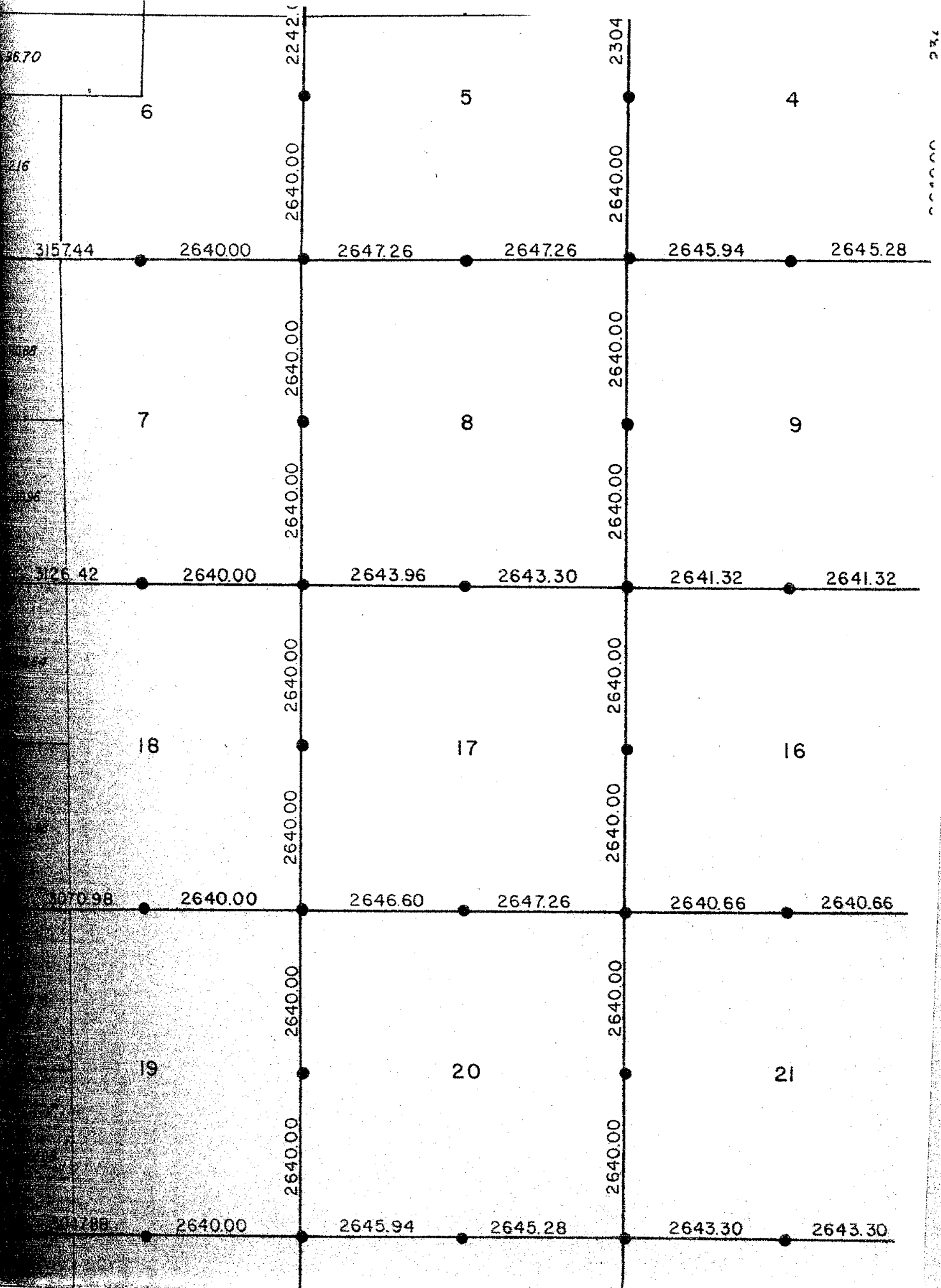
3) EA Nail S 70° E north side 3'd. Maple
 12.925'



Found 1000 box with 1" bar
 10' of at East side is
 recorded in L.S. Pg. 187

GLO - Polaris 1978

Alaredon Twp



Ingham
Abie don Twp
Wolverine Copy

