

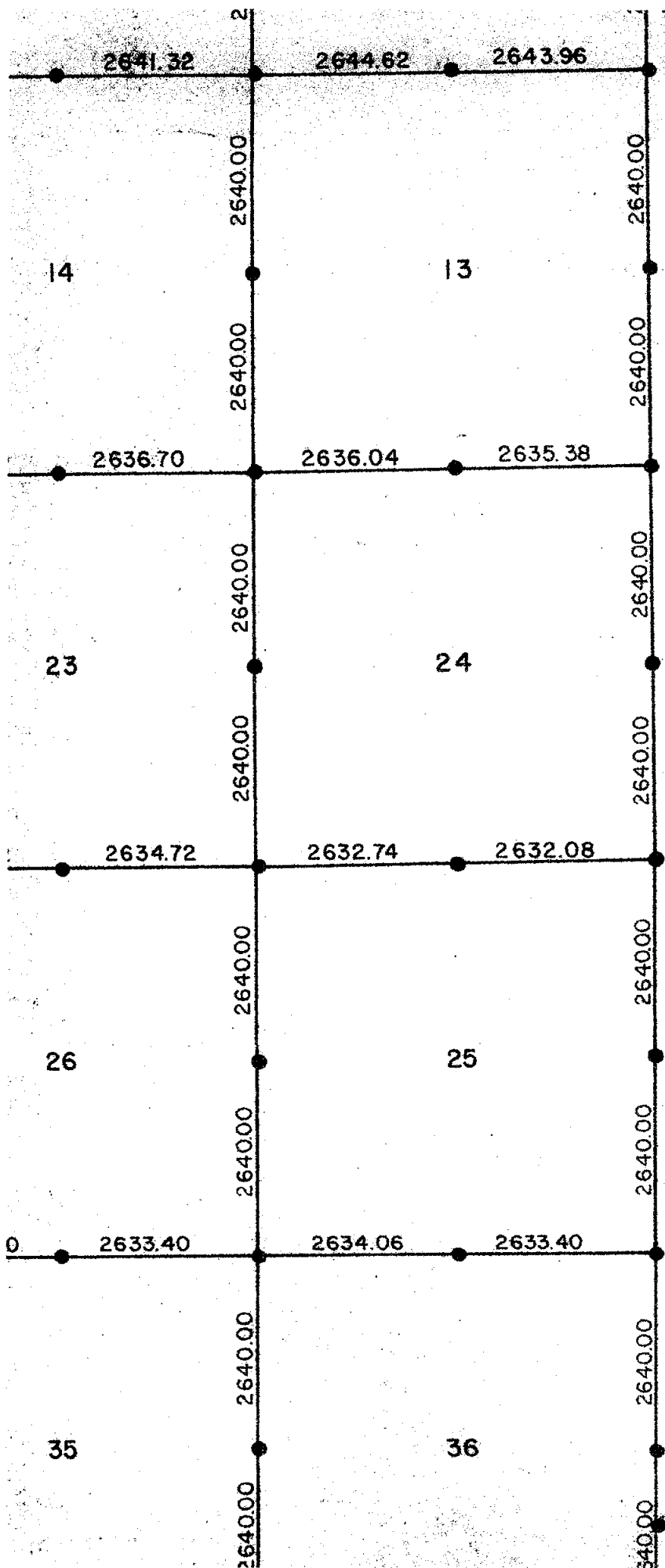
Scale, 40 chains to an inch

and Census Deputy Surveyor.

I certify that the above is a true copy of the original plot in this office.

Alaiedon

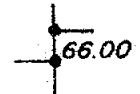
Surveyor General's Office



by the original

A 40.00

Acreage
(from original



Closing Corner

Measurements which are
outside subject township
to adjacent townships
measurements shown are



2000 1000 0
ONE INCH EQUALS

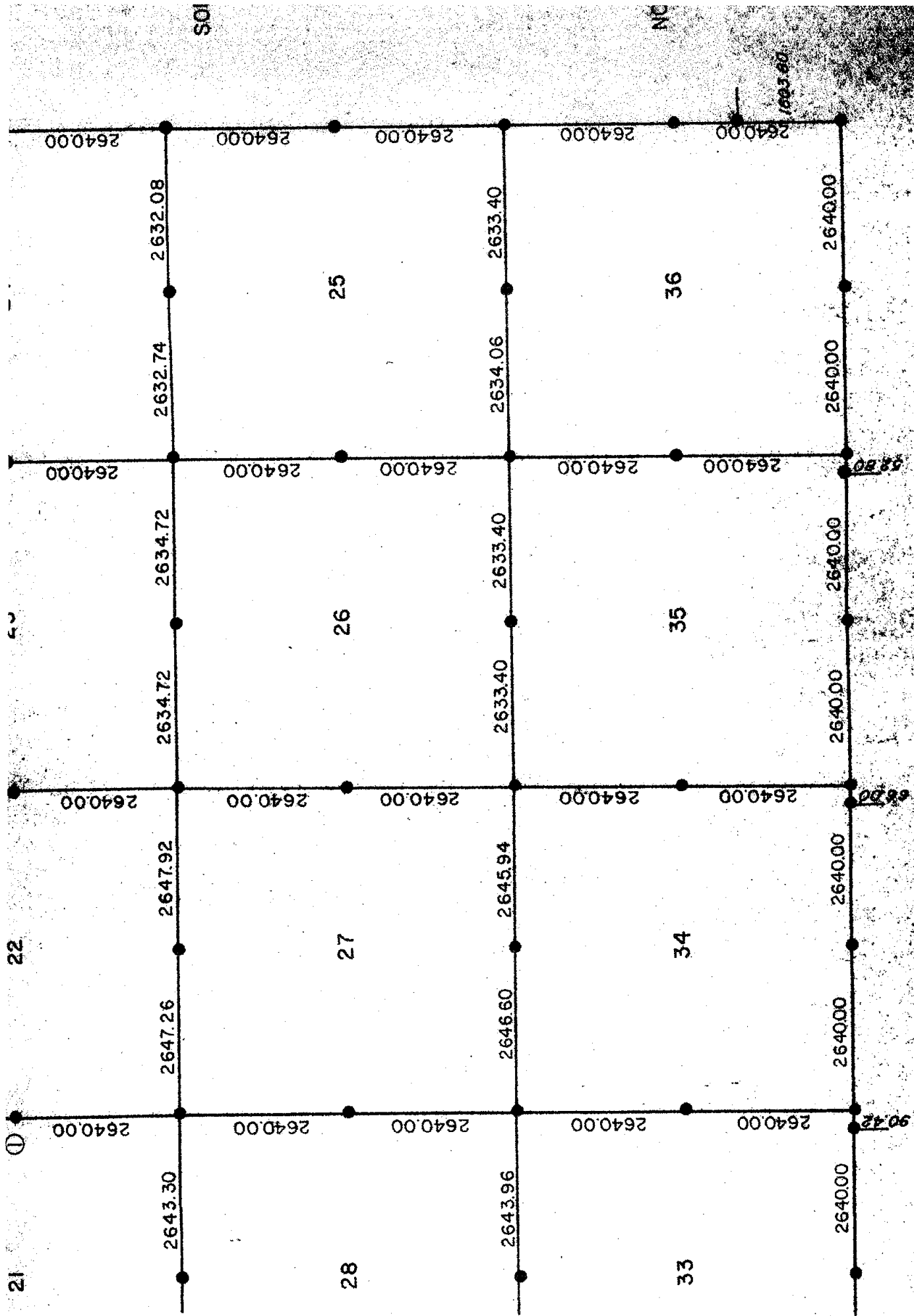
SOURCE : General Land Office Field
Exterior Field Survey
Surveyed :
Certified :
Surveyor :
Interior Field Survey
Surveyed :
Certified :
Surveyor :

The distances and monuments
from the original field notes
held by the Michigan State
of Natural Resources.
Distances were original
chains and links.

NOTE : ① Tree used as post.

Prepared by the Ingham
and Remonumentation
under the supervision of

Alameda Twp.



Algedon Twp