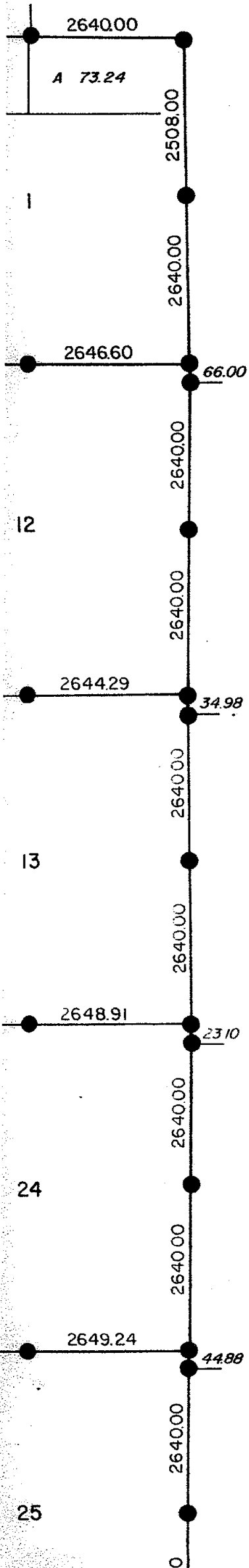


AURELIUS TOWNSHIP

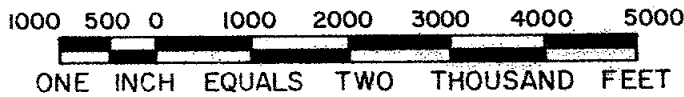
T2N-R2W

G.L.O. PLAT MAP (GENERAL LAND OFFICE)



- Corner Set by the original survey
- Post Set by the original survey
- A 40.00 Acreage (from original G.L.O. plats)
- Closing Corner Offsets

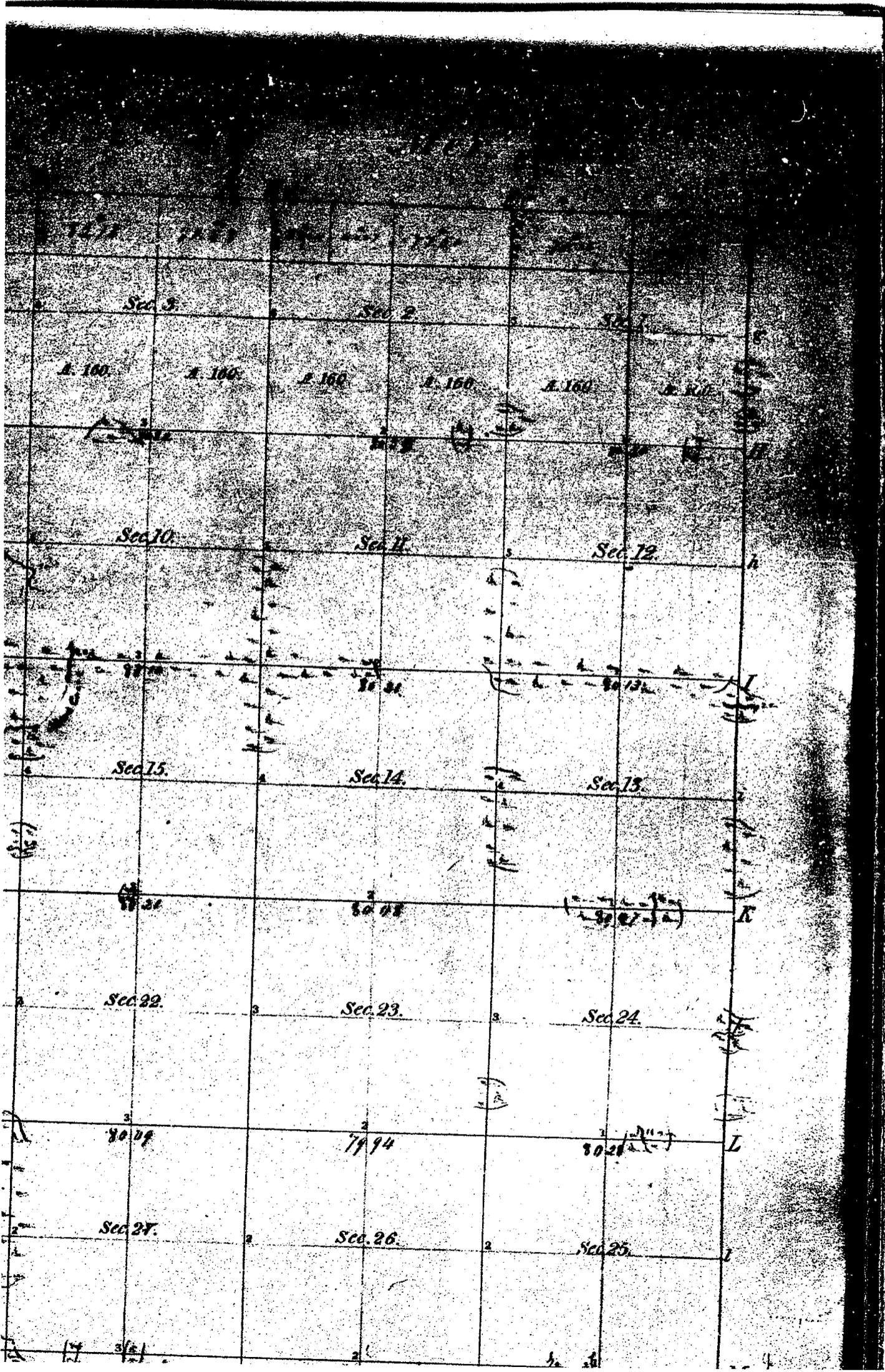
Measurements which are shown outside subject township refer to adjacent townships. All measurements shown are in feet.



SOURCE : GENERAL LAND OFFICE FIELD NOTES (G.L.O.)

EXTERIOR FIELD SURVEY (Township Boundary)
 South Boundary
 Surveyed: *May 8, 1825, Surveyor not noted*
 East Boundary
 Surveyed: *May 7, 1825 by J. Wampler and J. Mullett*
 North Boundary (South Boundary of Delhi Township)
 Surveyed: *May 13, 1825 by J. Mullett*
 West Boundary (East Boundary of Eaton Rapids Township, Eaton Co.)
 Surveyed: *date and Surveyor not noted*

INTERIOR FIELD SURVEY
 Surveyed: *February 4-14, 1826*



GLO Map - Aurelius Twp.