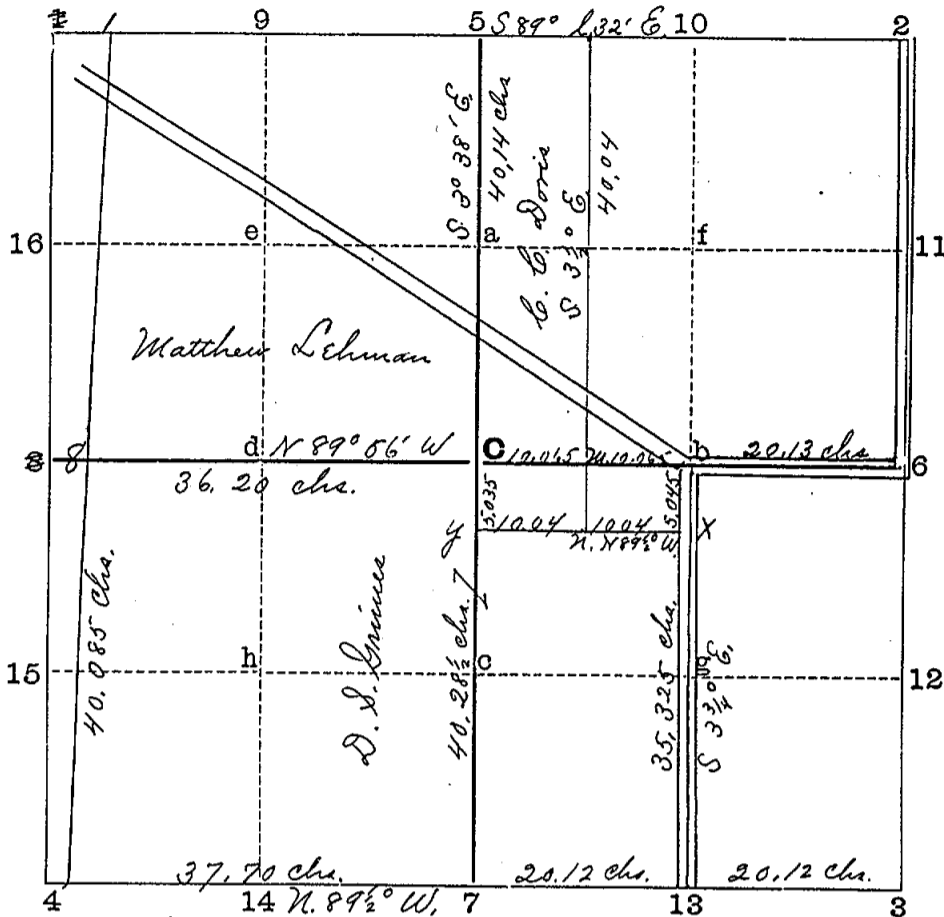


STATE OF MICHIGAN,
COUNTY OF INGHAM,

Received for Record this 9th day of August, A. D. 1900, at 3 o'clock P.M.
J. A. Lester, Register of Deeds.

COPY OF MINUTES OF SURVEY.

SECTION 9, Town 2 North, Range 2 E Meridian of Michigan.



- c Iron post f.w. bears cherry 15- S 63 1/2° W - 168 lbs.
B Oak. 8 - S 79 1/2° W 150 lbs.
- 1 Stake f.w. bears. W. Oak. 40, N. 51° W. - 6 lbs.
- 2 W Oak. 4, N. 79° W - 26 1/2 lbs.
- 4 Stone f.w. bears. B Oak 8 S 89 1/2° E. - 49 lbs.
- 5 Dbl Do, 20 N. 15° E. - 32 lbs.
- 6 Part of Oak. f.w. bears. Elm. 10 N. 3° E. - 46 lbs.
- Iron to be set W. Swamp Oak. 15, S 46° W - 48 lbs.
- 7 Stone + Brick, f.w. bears. S.W. corner of school house S 55 3/4° E. 114 1/2 lbs.
- S.E. corner of Doggett Monument N.-W 200 3/4 lbs.
- 8 Set steel mower shaft for corner f.w. bears. W. Oak. 7 N 54° W - 228 1/2 lbs.
- 3 ft long 1 1/4" dia Red Oak 12, N 87° W. 150 lbs.
- 9 Set Oak post with stone f.w. bears. Elm. 10 S 83 3/4° W. - 45 1/4 lbs.
- 3 1/2" lumber south of Ingham post Do, 8 N. 74° E - 33 1/2 lbs.
- 10 Stone f.w. bears. Elm 12 N. 85° W. 54 lbs.
- 11 Do 8 S 50° E. 100 lbs.
- 12
- 18 Set steel mower brace f.w. bears. B. Oak 16, N. 65 1/2° W. 23 1/2 lbs.
- 14 Maple 16, S 83° E 49 1/2 lbs.
- 16 L. post iron to be set f.w. bears Hickory 3- S. 1° E. - 16 lbs.
- Do 6 S 85 3/4° W - 60 lbs.

M. Set stake f.w. bears. Db. B Oak 8, S. 26° W - 40 lles.
 W. Oak 18, N. 74° E. 40 1/2 lles.
 Set Iron nail chisel 3/4" square f.w. bears B. Oak. 32. S 71 1/4° E. - 212 lles
 16' long. and Crabapple 10. S 82° W. - 9 1/2 lles.
 " B Oak 24. S 7 1/2° E. - 403 lles.

X Set steel shaft 18' long 1 1/4" dia f.w. bears Db. B. Oak. 8, N. 85 1/2° W - 20 lles.
 B. Oak. 24 N. 71° N. - 98 lles.
 n. Set Oak post f.w. bears Elm. 16. N. 4° W. 227 lles.

y. Set Iron rod 1" dia 32' long for corner, No trees

l.

Magnetic Variation 10' East

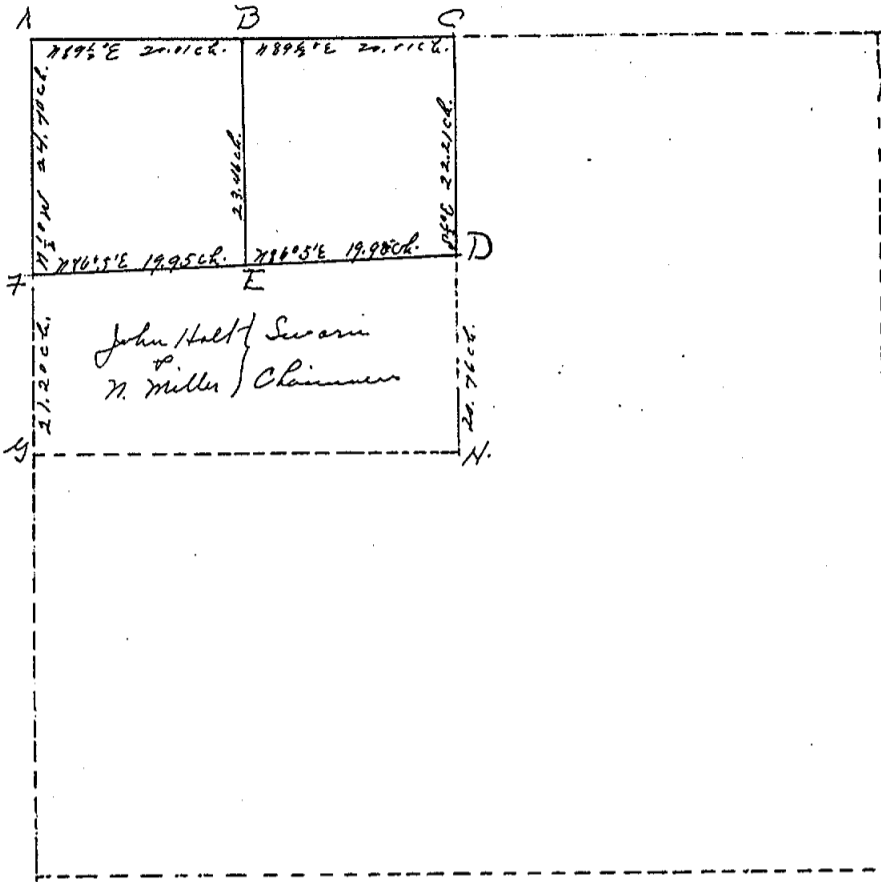
STATE OF MICHIGAN, }
 COUNTY OF INGHAM, } ss. E. A. Callins County Surveyor of said County,
 Do Hereby Certify that I did, on the application of D. J. Grimes, Matthew Lehman and
C. C. Doris

Section 31, in the Township of White Oak, Town 2, North, Range 2 E
 on May 31 at the 1st and 4th days of June A.D. 1900, and the following persons acted as chainmen, first being duly sworn, to-wit: D. J. Grimes, Nathan Brunnington, Matthew Lehman and C. C. Doris
 And I Further Certify that I have compared the foregoing copy with the original minutes made by me at the time of the survey, and that it is a full and true copy of the minutes of such survey, which minutes give the magnetic variation at the initial point of the survey.
E. A. Callins Deputy, County Surveyor.

COUNTY SURVEYOR'S RECORD,

TOWN One NORTH, RANGE One East, MERIDIAN OF MICHIGAN.

Section One



Page 172, Vol. 3.

TOWN _____ NORTH, RANGE _____, MERIDIAN OF MICHIGAN.

- 1
- 2
- 3
- 4
- 5
- 6
- 7
- 8
- 9
- 10
- 11
- 12
- 13
- 14
- 15
- 16
- 17
- 18
- 19
- 20

24
25

INGHAM COUNTY, MICHIGAN.

TOWN One NORTH, RANGE One East, MERIDIAN OF MICHIGAN.

Survey of the North west 7/4 quarter of Section No One in Township No One North Range No One East as shown by the plat with letters of reference to lines and corners with the distances between the same which are given on the lines. It will be seen by comparing this record with the U.S. Survey that this quarter section covers about eight acres and that the bearings of the east & West lines cannot be paralleled with the township lines.

The divisions at D and F were made according to law as follows

A.G. by U.S. Survey = 43.27 chs. by present survey it = 45.90 chs.

Then $43.27 : 45.90 :: 20.00 : 21.20 = F.G.$

And $A.G. (45.90) - F.G. (21.20) = A.F. 24.70$

The division of C & H at D was made in the same manner.

The corners as located are thus described.

- 1 = Post 1 1/2" dia. bears $78^{\circ} W$ 51 lks
- 2 = " " " 1 1/4" " " $S 1/2^{\circ} E$ 19 3/4 "
- 3 = a point 18 1/2 lks east from Ingham 1/4 post.
- 4 = Post Hickory 4" dia bears $S 44^{\circ} W$ 51 3/4 "
- 5 = " " " 7" " " $78 7 1/2^{\circ} W$ 41 1/2 "
- 6 = Stone and brick set for corner.
- 7 = Original 1/4 post in Swamp No One near.
- 8 = a stone. Corner located by A Jackson May 20th 1843.

Run by the County Meridian *Varia.* $1^{\circ} 22' East$

Surveyed Apr 16th 1890

By A. P. Drake
Co. Surveyor.
Ing Co

Recorded August 30th 1890

INGHAM COUNTY, MICHIGAN.

116

TOWN One NORTH, RANGE One East, MERIDIAN OF MICHIGAN.

Run by the true Meridian. Variation $3^{\circ} 10' E$.
Surveyed by A. Jackson
Co. Surveyor May 20, 1843.

INGHAM COUNTY, MICHIGAN.

TOWN *Tos* NORTH, RANGE *One* East, MERIDIAN OF MICHIGAN.

Run by the true Meridian Var 3.20' E Recorded May 25th 1840
By J A Jackson County Surveyor for the County of Ingham