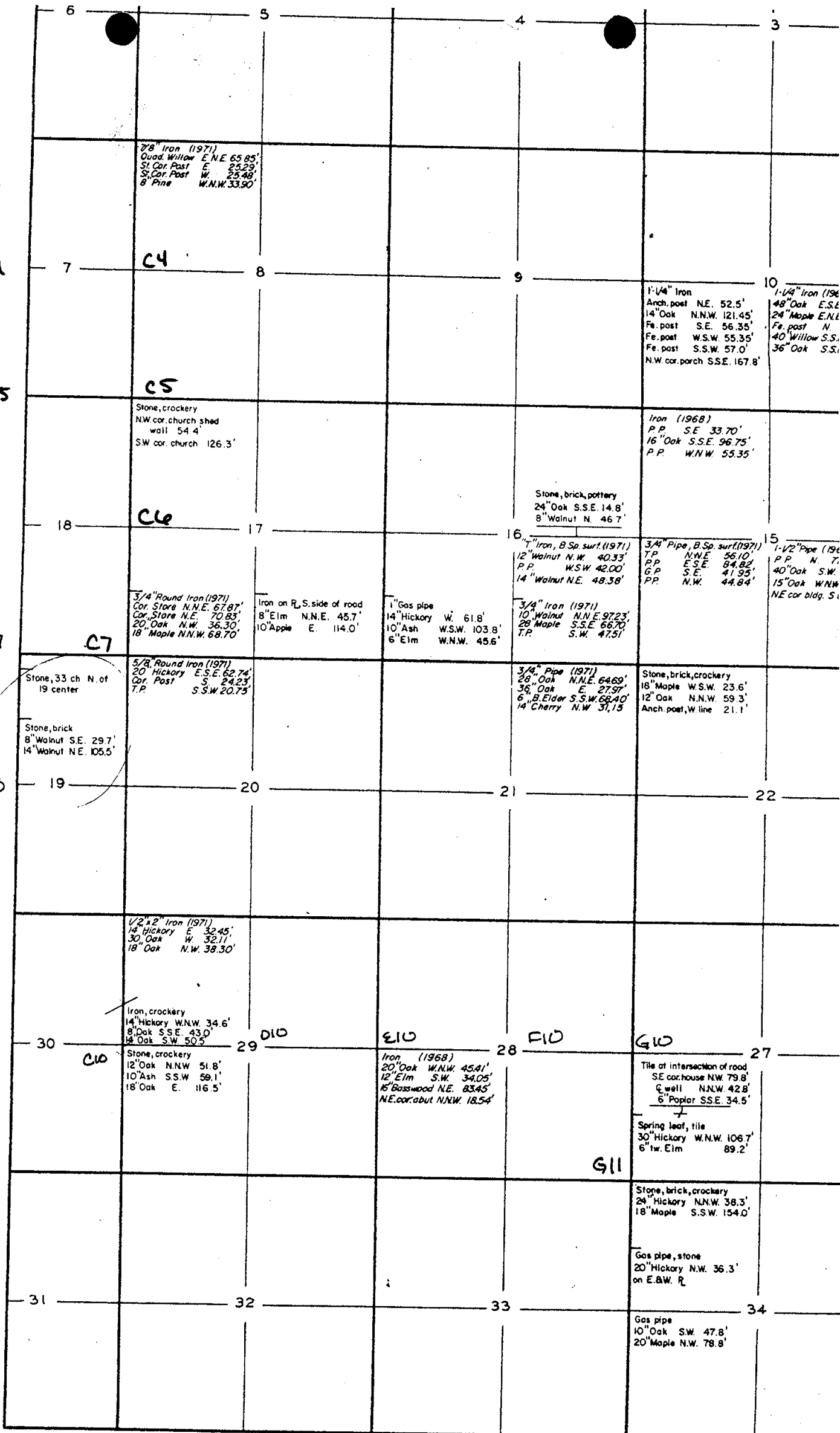
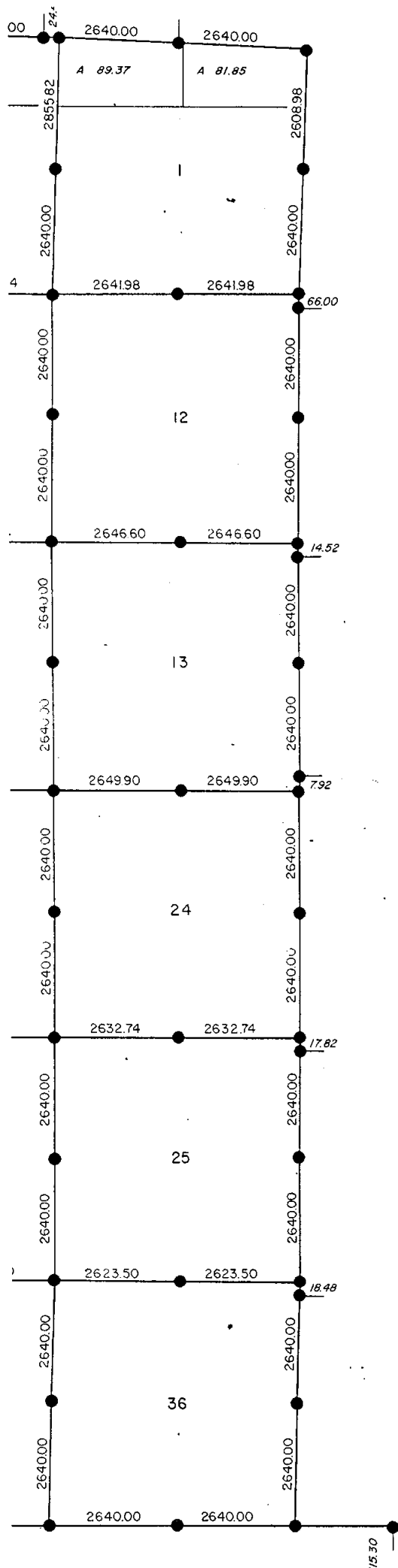


( T.N.R.I.W. Leslie Twp, Ingham County )



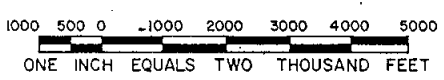
\* I.C Road Commission  
Bunker Hill 1/1/1972

# BUNKERHILL TOWNSHIP TIN-RIE G.L.O. PLAT MAP (GENERAL LAND OFFICE)



- Corner Set by the original survey
- Post Set by the original survey
- A 40.00 Acreage (from original G.L.O. plats)
- ⊕ Closing Corner Offsets

Measurements which are shown outside subject township refer to adjacent townships. All measurements shown are in feet.



SOURCE : GENERAL LAND OFFICE FIELD NOTES (G.L.O.)

EXTERIOR FIELD SURVEY (Township Boundary)  
 South Boundary  
 Surveyed: *January 19, 1824 by J. Wampler (corrected by Wampler, January 31, 1826)*  
 East Boundary  
 Surveyed: *February 4, 1824 by J. Wampler*  
 North Boundary (South Boundary of Ingham Township)  
 Surveyed: *February 6, 1824 by J. Wampler*  
 West Boundary (East Boundary of Leslie Township)  
 Surveyed: *by J. Wampler, date not noted*

INTERIOR FIELD SURVEY  
 Surveyed: *January 30 to February 8, 1826*  
 Certified: *February 8, 1826*  
 Surveyor: *J. Wampler*

The distances and monuments shown are from the original field notes which are held by the Michigan State Department of Natural Resources, Lands Division. Distances were originally recorded in chains and links.

Prepared by the Ingham County  
 Survey and Remonumentation Project  
 1978 - 1979  
 under the supervision of  
 Polaris Associates, Inc.  
 Registered Land Surveyors  
 Mason, Michigan

