

# LAND CORNER RECORDATION CERTIFICATE

## FILING REQUIREMENT OF ACT 74, MICH. P.A. 1970

W 1/4 corner, Section 28, T1N, R1E, Bunker Hill Township,  
Ingham County

FOR CORNERS OF--:	LOCATED IN--:	CORNER CODE NUMBER
1. PUBLIC LAND SURVEY.....	T. <u>1</u> N. <u>8</u> , R. <u>1</u> E. <u>W</u>	<u>E-10</u>
2. PROPERTY CONTROLLING IN SECTION.....	T. _____ N. _____ S., R. _____ E. _____ W.	_____
3. MISCELLANEOUS PROPERTY IN SECTION.....	T. _____ N. _____ S., R. _____ E. _____ W.	_____
4. LOT NO. _____, RECORDED PLAT _____		
5. PRIVATE CLAIMS _____		

LIBER **2 PG 581**

FILED

Nov 29 9 57 AM '73

REGISTER OF DEEDS

*Ernie M. Lewis*  
INGHAM COUNTY, MICH.

REGISTER OF DEEDS STAMP AND FILING NUMBER

I, James E. Stephens do hereby certify that under requirements of P.A. 74, Michigan P.A. of 1970, the corner points mentioned in lines 1 and 2 above (identified with circles on index code diagram—over) were, in a field survey on July 17, 1973, established, re-established, monumented, re-monumented, recovered or restored as expressed below and in conformance with regulations and rules therefore as required in the current manual of survey instructions of the United States Department of the Interior, Bureau of Land Management or by a decree of a court of law. Furthermore, that the corner points mentioned in lines 3, 4 and 5 above were, in a field survey on \_\_\_\_\_ 19\_\_\_\_, found, recovered, restored, established or re-established as expressed below and in conformance with the rules of the Michigan State Board of Registration for Land Surveyors or, by a Decree of a Court of law:

**A. Description of original monument and accessories and/or subsequent restoration:**

The original monument and accessories were not found.

**B. Description of corner evidence found and/or method applied in restoring or re-establishing corner:**

An iron was found in the centerline of the 1/4 line road (Fitchburg Road) and on a projection of a fence North and South of the corner.

**C. Description of monument for corner and accessories established to perpetuate locating the position of the corner:**

The iron found in the West 1/4 corner was left in position with the following witnesses;

- Survey tag in the South side of a 16" Basswood tree, N77°36'E 83.45 feet.
- Survey tag in the NW side of 12" Elm tree, S44°33'W 34.05 feet.
- Survey tag in the SW side of a 20" Oak tree, N56°47'W 45.41 feet.

SIGNED BY *James E. Stephens* DATE September 19, 1973

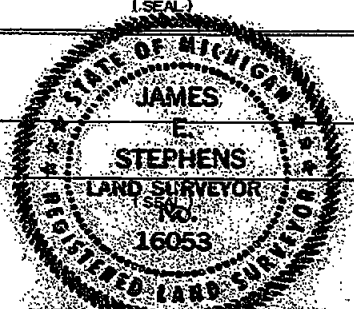
SURVEYOR'S MICHIGAN REGISTRATION NO. 16053

FOR STATE AND UNITED STATES AGENCIES:

SIGNED BY \_\_\_\_\_ DATE \_\_\_\_\_  
CHIEF OF SURVEY PARTY

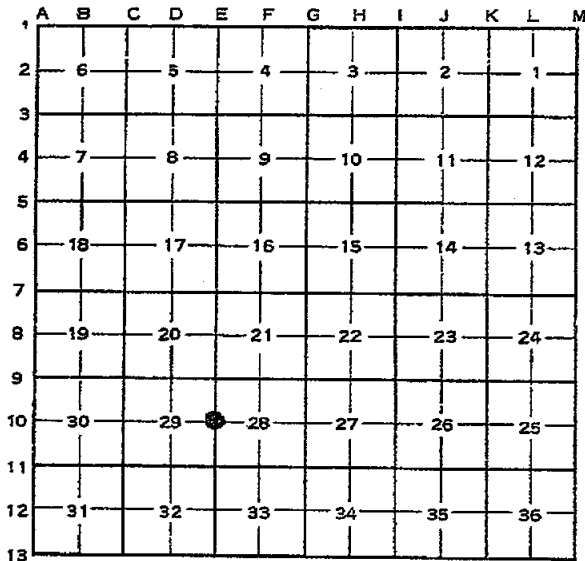
APPROVED AND SIGNED BY \_\_\_\_\_ DATE \_\_\_\_\_  
MICHIGAN REGISTERED LAND SURVEYOR

SURVEYOR'S MICHIGAN REGISTRATION NO. \_\_\_\_\_



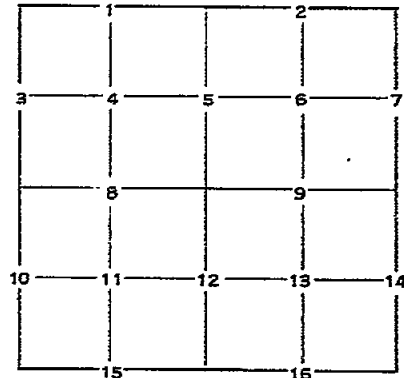
CORNER NUMBERING CODE DIAGRAMS FOR IDENTIFYING LAND CORNER RECORDATIONS AND INDEXING

FOR PUBLIC LAND SURVEY CORNERS IN THE T. 1N, R. 1E (MENTIONED OVER)



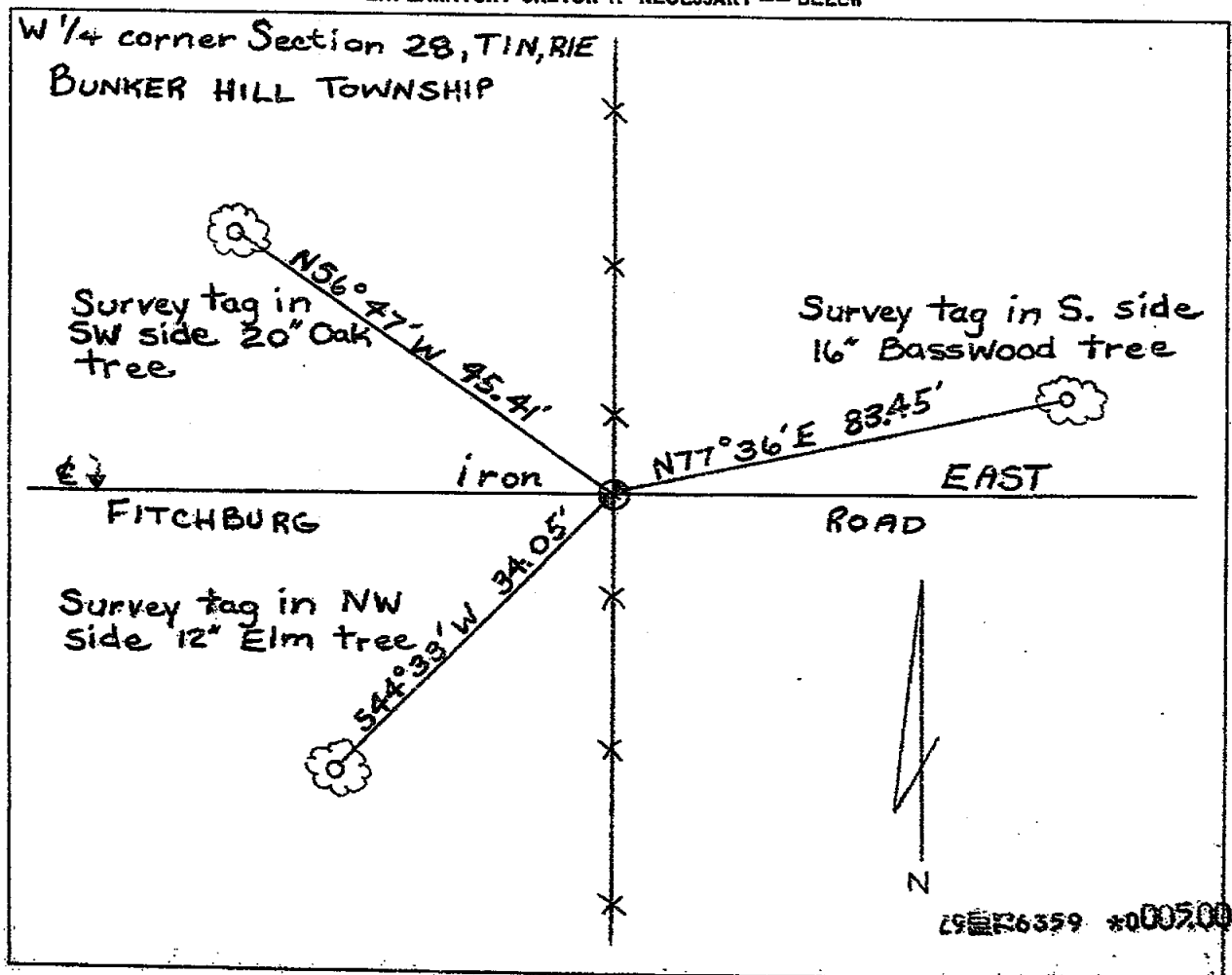
Apply letter prefix for corner points encircled above for identifying corner recordation numbers over.

FOR PROPERTY CONTROLLING AND MISC. PROPERTY CORNERS WITHIN THE SECTION (MENTIONED OVER AND EXCLUDE LOT CORNER)



1. Above coded numbers are positioned on 1/16 fractional lines of the section.
2. Township corner code numbers shall be applied to corners of above typical section not numbered.
3. Miscellaneous property corners within a section, located at points other than numbered above, shall be referenced to at least two of above corner code numbers.
4. Private claim corners to be tied to rectangular land corners if possible - sketch required below.

EXPLANATORY SKETCH IF NECESSARY -- BELCW



# LAND CORNER RECORDATION CERTIFICATE

FILING REQUIREMENT OF ACT 74, MICH. P.A. 1970 LIBER 3 PG 151

FILED

FOR CORNERS OF--	LOCATED IN--	CORNER CODE NUMBER
1. PUBLIC LAND SURVEY 31	T 1 N. R. 1 W.	C-11, C-12, C-13
2. PROPERTY CONTROLLING IN SECTION 31	T 1 N. R. 1 W.	C-11, C-12, C-13
3. MISCELLANEOUS PROPERTY IN SECTION 31	T 1 N. R. 1 W.	
4. LOT NO.	RECORDED PLAN	
5. PRIVATE CLAIMS		

**JUL 11 10 56 AM '74**  
**REGISTER OF DEEDS**  
*Carl M. Lewis*  
**INGHAM COUNTY, MICH.**

REGISTER OF DEEDS STAMP AND FILING NUMBER

I, **D. Scott** do hereby certify that under requirements of P.A. 74, Michigan P.A. of 1970 the corner points mentioned in lines 1 and 2 above (identified with circles on index code diagram - over) were, in a field survey on **September 27, 1973**, established, re-established, monumented, re-monumented, recovered or restored as expressed below and in conformance with regulations and rules therefore as required in the current manual of survey instructions of the United States Department of the Interior, Bureau of Land Management or by a decree of a court of law. Furthermore, that the corner points mentioned in lines 3, 4 and 5 above were, in a field survey on **September 27, 1973**, found, recovered, restored, established or re-established as expressed below and in conformance with the rules of the Michigan State Board of Registration for Land Surveyors or, by a Decree of a Court of law:

A. Description of original monument and accessories and/or subsequent restoration:

B. Description of corner evidence found and/or method applied in restoring or re-establishing corner:

- C-11 - Found patched 4' square hole in blacktop with 1/2" iron rod in center.
- C-12 - Found patched 4' square hole in blacktop with 1/2" iron rod in center.
- C-13 - Found boat spike 2" below surface. Replaced with 1" x 30" iron pipe.

C. Description of monument for corner and accessories established to perpetuate locating the position of the corner:

C-11 - NE Corner Section 31, T1N, R1E N88°W, 31.00' Fence Corner Post S26°W, 77.88' 7" Black Oak	East 30.00' Iron Axle S25°E 50.84' 42" Black Oak S78°E 50.36' 22" Black Oak
C-12 - E 1/4 Corner Sec. 31, T1N, R1E N65°E, 48.97' 4" Conc. Mon. U.S. N31°W, 50.57' 6" Shag Bark Hickory	S23°W 111.44' 28" Black Oak N52°E 48.46' 30" Maple N32°W 35.82' Telephone Anchor Pole
C-13 - SE Corner Section 31, T1N, R1E S82°W, 27.29' 24" Black Oak S20°E, 62.11' 25" Black Oak	S67°E 29.71' 26" White Oak S35°W 47.73' 10" White Oak

SIGNED BY *D. Scott* DATE 8 July 74

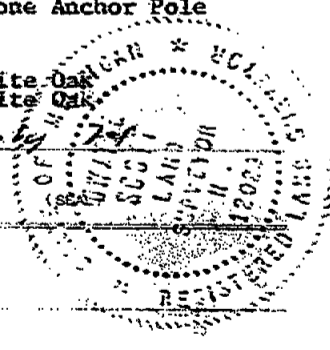
SURVEYOR'S MICHIGAN REGISTRATION NO. 12029

FOR STATE AND UNITED STATES AGENCIES:

SIGNED BY \_\_\_\_\_ DATE \_\_\_\_\_  
CHIEF OF SURVEY PARTY

APPROVED AND SIGNED BY \_\_\_\_\_ DATE \_\_\_\_\_  
MICHIGAN REGISTERED LAND SURVEYOR

SURVEYOR'S MICHIGAN REGISTRATION NO. \_\_\_\_\_



# LAND CORNER RECORDATION CERTIFICATE

FILING REQUIREMENT OF ACT 74, MICH. P.A. 1970

LIBER 5 15 58

FOR CORNERS OF--	LOCATED IN--	CORNER CODE NUMBER
1. PUBLIC LAND SURVEY	R. 9 T. 1 N. 1 R. 1 E.	C-10
2. PROPERTY CONTROLLING IN SECTION	T. S. R. E. W.	
3. MISCELLANEOUS PROPERTY IN SECTION	T. S. R. E. W.	
4. LOT NO. _____, RECORDED PLAT _____		
5. PRIVATE CLAIMS _____		

FILED

OCT 27 2 12 PM '78

REGISTER OF DEEDS  
*Paul Johnson*  
INGHAM COUNTY, MICH.

REGISTER OF DEEDS STAMP AND FILING NUMBER

I, Glenn A. Fauser, do hereby certify that under requirements of P.A. 74, Michigan P.A. of 1970, the corner points mentioned in lines 1 and 2 above were, in a field survey on Oct 11, 1975, established, re-established, monumented, re-monumented, recovered or restored as expressed below and in conformance with regulations and rules therefore as required in the current manual of survey instructions of the United States Department of the Interior, Bureau of Land Management or by a decree of a court of law. Furthermore, that the corner points mentioned in lines 3, 4 and 5 above were, in a field survey on Oct 11, 1975, found, recovered, restored, established or re-established as expressed below and in conformance with the rules of the Michigan State Board of Registration for Land Surveyors or, by a Decree of a Court of law:

A. Description of original monument and accessories and/or subsequent restoration:

B. Description of corner evidence found and/or method applied in restoring or re-establishing corner:

C-10 Found 5/8" rerod in E Meridian Rd

C. Description of monument for corner and accessories established to perpetuate locating the position of the corner:

C-10 5/8" rerod  
West end of culvert N. 75° W 27.0  
Tele. cable Box N 45° E. 54.50 To top center  
Tele. cable Box N 25° E 87.82 to top center  
34" Oak S. 75° E 114.92 to spike on N. side

SIGNED BY Glenn A. Fauser DATE Oct 27, 1978

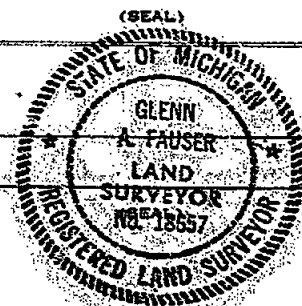
SURVEYOR'S MICHIGAN REGISTRATION NO. 18657

FOR STATE AND UNITED STATES AGENCIES:

SIGNED BY \_\_\_\_\_ DATE \_\_\_\_\_  
CHIEF OF SURVEY PARTY

APPROVED AND SIGNED BY \_\_\_\_\_ DATE \_\_\_\_\_  
MICHIGAN REGISTERED LAND SURVEYOR

SURVEYOR'S MICHIGAN REGISTRATION NO. \_\_\_\_\_



# LAND CORNER RECORDATION CERTIFICATE

FILING REQUIREMENT OF ACT 74, MICH. P.A. 1970  
Section 28

West  $\frac{1}{4}$  Post

Bunkerhill Township

FOR CORNERS OF--:	LOCATED IN--:	CORNER CODE NUMBER
1. PUBLIC LAND SURVEY _____	T. <u>1</u> N. <u>1</u> E. <u>1</u> W. <u>1</u>	E-10
2. PROPERTY CONTROLLING IN SECTION _____	T. _____ N. _____ S. _____ R. _____ E. _____ W. _____	_____
3. MISCELLANEOUS PROPERTY IN SECTION _____	T. _____ N. _____ S. _____ R. _____ E. _____ W. _____	_____
4. LOT NO. _____, RECORDED PLAT _____		
5. PRIVATE CLAIMS _____		

LIBER 5 PG 366  
FILED

DEC 11 8 14 AM '79  
REGISTER OF DEEDS  
*Paula Johnson*  
INGHAM COUNTY, MICH.

REGISTER OF DEEDS STAMP AND FILING NUMBER

I, Glenn A. Fauser, RLS, do hereby certify that under requirements of P.A. 74, Michigan P.A. of 1970, the corner points mentioned in lines 1 and 2 above were, in a field survey on April, 1979, established, re-established, monumented, re-monumented, recovered or restored as expressed below and in conformance with regulations and rules therefore as required in the current manual of survey instructions of the United States Department of the Interior, Bureau of Land Management or by a decree of a court of law. Furthermore, that the corner points mentioned in lines 3, 4 and 5 above were, in a field survey on \_\_\_\_\_, 19\_\_\_\_, found, recovered, restored, established or re-established as expressed below and in conformance with the rules of the Michigan State Board of Registration for Land Surveyors or, by a Decree of a Court of law:

A. Description of original monument and accessories and/or subsequent restoration:

B. Description of corner evidence found and/or method applied in restoring or re-establishing corner:  
E-10 West  $\frac{1}{4}$  Post  
Found Iron Pipe

C. Description of monument for corner and accessories established to perpetuate locating the position of the corner:

E-10 West  $\frac{1}{4}$  Post

N 56°47' W	20" Oak	45.41'
N 77°36' E	16" Bass	83.45'
S 44°33' W	12" Elm	34.05'

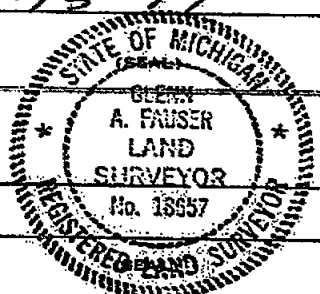
SIGNED BY Glenn A. Fauser DATE 10-15-79

SURVEYOR'S MICHIGAN REGISTRATION NO. 18657

FOR STATE AND UNITED STATES AGENCIES:

SIGNED BY \_\_\_\_\_ DATE \_\_\_\_\_  
CHIEF OF SURVEY PARTY

APPROVED AND SIGNED BY \_\_\_\_\_ DATE \_\_\_\_\_  
MICHIGAN REGISTERED LAND SURVEYOR



SURVEYOR'S MICHIGAN REGISTRATION NO. \_\_\_\_\_

FORM APPROVED BY MICHIGAN STATE BOARD OF REGISTRATION, JAN. 28, 1971  
REVISED MAY 14, 1975

# LAND CORNER RECORDATION CERTIFICATE

FILING REQUIREMENT OF ACT 74, MICH. P.A. 1970

1/4 CORNER COMMON TO SECTION 20 & 32 LIBER 7 PAGE 218

FOR CORNERS OF--	LOCATED IN--	CORNER CODE NUMBER
1. PUBLIC LAND SURVEY 32 T. 1 N. R. 1 E.	<del>X</del>	BUNKERHILL TWP. D-11
2. PROPERTY CONTROLLING IN SECTION	T. S. R. E. W.	
3. MISCELLANEOUS PROPERTY IN SECTION	T. S. R. E. W.	
4. LOT NO. _____, RECORDED PLAT _____		
5. PRIVATE CLAIMS _____		

FILED

Nov 28 12 44 PM '89

REGISTER OF DEEDS STAMP AND FILING NUMBER

I, RON HELSEL, do hereby certify that under requirements of P.A. 74, Michigan P.A. of 1970, the corner points mentioned in lines 1 and 2 above were, in a field survey on NOVEMBER 10, 1989 established, re-established, monumented, re-monumented, recovered or restored as expressed below and in conformance with regulations and rules therefore as required in the current manual of survey instructions of the United States Department of the Interior, Bureau of Land Management or by a decree of a court of law. Furthermore, that the corner points mentioned in lines 3, 4 and 5 above were, in a field survey on \_\_\_\_\_, 19\_\_\_\_ found, recovered, restored, established or re-established as expressed below and in conformance with the rules of the Michigan State Board of Registration for Land Surveyors or, by a Decree of a Court of law:

- A. Description of original monument and accessories and/or subsequent restoration:
- 1) OAK STAKE SET IN ORIGINAL G.L.O. SURVEY 40.13 CHAINS FROM NW CORNER.
  - 2) SURVEY OF NE 1/4 BY T.J. BROWN, DEPUTY SURVEYOR, FEB. 11, 1848, NO CORNER INFORMATION GIVEN.
  - 3) SURVEY OF N 1/2 SECTION 32 BY R.J. ROBB, APRIL 20, 1911 - SET ELM STAKE MIDWAY, WITH NORTH LINE SECTION 32 BEING 79.94 CH (5276.04').

B. Description of corner evidence found and/or method applied in restoring or re-establishing corner:

FOUND REMNANTS OF DECAYED ANCHOR POST IN STONE PILE ± 2' DEEP, WITH A PLOW BLADE & POINTED BLUE ROCK, ON TREE AND FENCE ROW EAST AND WEST, ON EXTENDED TREE AND FENCE ROW SOUTH. MEASURES (2635.62') IN CLOSE ACCORD WITH R.J. ROBB SURVEY (±2638'). SET 1/2" PIPE IN E OF ANCHOR POST AND STONES.

C. Description of monument for corner and accessories established to perpetuate locating the position of the corner:

N 1/4 CORNER SECTION 32, T1N, R1E, BUNKERHILL TOWNSHIP 1/2" PIPE:

NAIL & TAG, 36" TWIN OAK, SOUTH, 9.65'

NAIL & TAG, 12" OAK, N80°E, 37.82'

NAIL & TAG, 12" CHERRY, N80°W, 47.67'

SIGNED BY Ron Helsel DATE 11-30-89

SURVEYOR'S MICHIGAN REGISTRATION NO. 18994 (SEAL)

FOR STATE AND UNITED STATES AGENCIES:

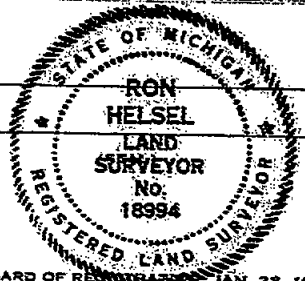
SIGNED BY \_\_\_\_\_ DATE \_\_\_\_\_

APPROVED AND SIGNED BY \_\_\_\_\_ DATE \_\_\_\_\_

CHIEF OF SURVEY PARTY

MICHIGAN REGISTERED LAND SURVEYOR

SURVEYOR'S MICHIGAN REGISTRATION NO. \_\_\_\_\_



2366

LAND CORNER RECORDATION CERTIFICATE  
Filing Requirement of Act 74, Mich. P.A. 1970

FILED

For corners in

Ingham  
(County)

Located In:

Corner Code #

AUG 2 4 14 PM '90

REGISTER OF DEEDS

REGISTER OF DEEDS

Register of Deeds Stamp & File Number

- |                                    |   |    |   |    |               |
|------------------------------------|---|----|---|----|---------------|
| 1. Public Land Survey              | T | IN | R | IE | E-9           |
|                                    | T | IN | R | IE | E-8           |
|                                    | T |    | R |    |               |
|                                    | T |    | R |    |               |
| 2. Property Controlling in Section | S | T  |   | R  |               |
|                                    | S | T  |   | R  |               |
| 3. Miscellaneous Property in Sec.  | S | T  |   | R  |               |
|                                    | S | T  |   | R  |               |
| 4. Lot No.                         |   |    |   |    | Recorded Plat |
| 5. Private Claims                  |   |    |   |    |               |

	A	B	C	D	E	F	G	H	I	J	K	L	M
2	6		5		4		3		2		1		
3													
4	7		8		9		10		11		12		
5													
6	18		17		16		15		14		13		
7													
8	19		20		21		22		23		24		
9													
10	30		29		28		27		26		25		
11													
12	31		32		33		34		35		36		
13													

I, Ronnie M. Lester, in a field survey on July 24, 1990, do hereby certify that under requirements of P.A. 74, Michigan P.A. of 1970, the corner points mentioned in lines 1 and 2 above were in conformance with regulations and rules therefore as required in the current manual of survey instructions of the United States Department of the Interior, Bureau of Land Management or by a decree of a Court of Law and/or that the corner points mentioned in lines 3, 4 and 5 above were in conformance with the rules of the Michigan Board of Land Surveyors or by a Decree of a Court of Law, established, re-established, monumented, re-monumented, recovered, found as expressed below:

NOTE: Not more than 4 corners, all in the same town and range, may be recorded on this certificate.

A. Description of original monument and accessories and/or subsequent restoration:

E-9 T.J. Brown utilized this corner 2/10/1848 in Survey by County surveyor. No witnesses given

E-8 GLO information indicates "set 1/2 mile post at North end of marsh" with one witness W.O. 18" N24°W 118 links.

A. Jackson, County Surveyor, indicated corner utilized in Survey in VI, Page 114 dated 11/23/1841. Calls for witnesses of W.O. 18" N24°W, 118 links and 8" oak N54°E, 146 links.

B. Description of corner evidence found and/or method applied in restoring or reestablishing corner:

E-9 Investigation at this corner revealed old North-South fence line West of North-South ditch line. Low swampy area with no witnesses or good physical evidence. Set 1" x 24" steel bar prorated GLO distances between E-8 and E-10 on old North-South fence line. Corner falls 22' West of centerline of North ditch and 10' South of centerline of ditch to East. Measured North 2640.2', South 2640.2' and East 2644.3'

E-8 Investigation at this location revealed a 5/8" re-bar in circle of stones in North-South fence line on woodline to West. G. Fauser, LS, indicated he set this corner. Accepted re-bar as perpetuated location of Section corner. Measured North 2622.7', South 2640.3' and East 2655.5'

C. Description of monument for corner and accessories established to perpetuate locating the position of the corner:

E-9 1" x 24" steel bar as described above. 55 A-4165  
Set nail and tag in blaze on East side 24" soft maple, 332° az., 25.6'  
Set nail and tag in blaze on NE side twin 12" soft maple, 252° az., 31.0'  
Set nail and tag in blaze on North side 20" soft maple, 200° az., 43.1'  
Set nail and tag in blaze on SW side 24" soft maple, 113° az., 45.8'

E-8 5/8" re-bar as described above. P5-04-23-E8 A-4165  
Set nail and tag in NE side 36" oak, 297° az., 18.4'  
Set nail and tag in North side 40" oak, 284° az., 35.7'  
Set nail and tag in NW side 12 red oak, 54° az., 22.9'  
Set nail and tag in NW side 24" red oak, 37° az., 37.2'

Signed by Ronnie M. Lester  
Surveyor's Michigan License No. 18993

Date July 24, 1990

