

SOURCE: NOTHSTONE NOTES P. 6

TRANSCRIBED from ~~ORIGINAL~~ DUPLICATE on file at REMON. OFFICE

Township: Delhi
Section: 12

4 - see Sec. 13 M-5 UNRECORDED

2 - see Sec. 1 K-3 RECORDED

B see Sec. 11 K-4 RECORDED

C + stone marked + iron beside
walnut 15° S 9-3/4° W 30.2' L-5 RECORDED
walnut 16° S 37 1/2° W 35.8'
conc. anch. post N 25.2'
elm 8° SE 52.0'

U - found stake in center of tile - set iron shaft
maple 24° WNW 42.7'
elm 23° SW 53.0' L-4 RECORDED
ash 3° NE 34.6'
face of anch. post S 24.9'
face of anch. post N 25.7'

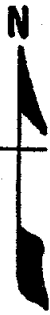
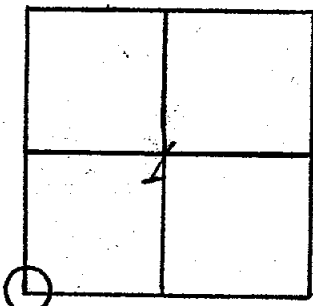
D - bolt in tile
b. walnut SW 45.5
b. walnut SW 41.8' [Large Nail in E. Rd. MSND 1963
29° Elm N 75° E 81.87
15° Wal. S 75° E 81.28
P.P. N 80° E 42.88] M-4 UNRECORDED

3 - iron shaft K-5 RECORDED

T. 3 N. R. 2 W.

33084 RN

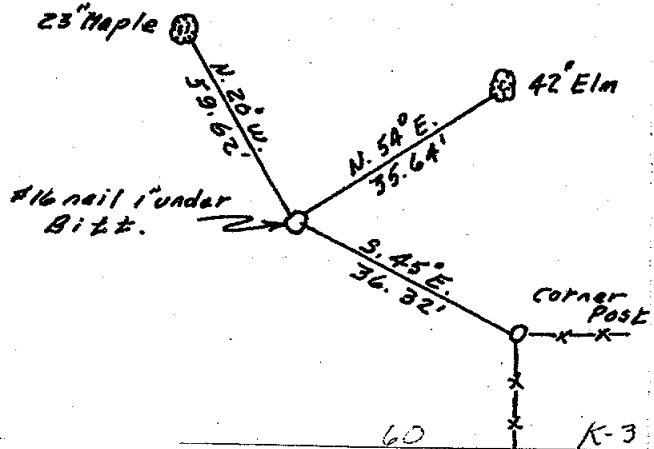
SEC. 1
Delhi Twp.



REMARKS

Found # 16 nail 1" under Bitt. Is located at the intersection of Pine Tree and Sandhill roads. Corner common to Sections 1,2,11,12. Rewitnessed with M. S. H. D. Reference tag and nail.

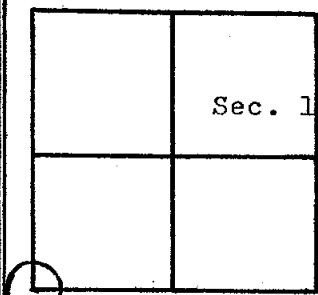
WITNESSES
 23" Maple N. 20° W. 59.62'
 42" Elm N. 54° E. 35.64'
 Corner Post S. 45° E. 36.32'
 (F.K.H. -M.S.H.D. -1959)



Form 280 (Rev. 3/60) GOV'T. MONUMENT WITNESSES RECORD

T. 3 N R. 2 W 33084 A

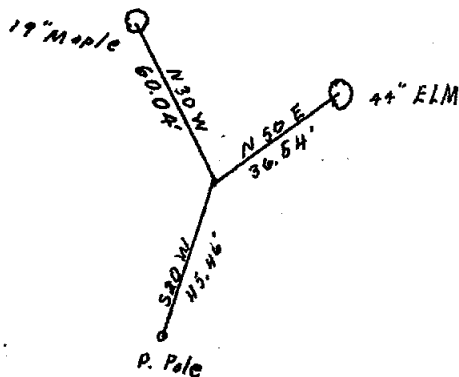
SEC. NO. 1



DESCRIPTION

Found 3/4" pipe in centerline of Sandhill and Pine tree Rd. 6" below blacktop. For SW corner of sec. 1 Delhi TWP Ingham Co.

WITNESSES
 N50E 44" Elm 36.54'
 S20W P. Pole 45.46'
 N30W 19" Maple 60.04'



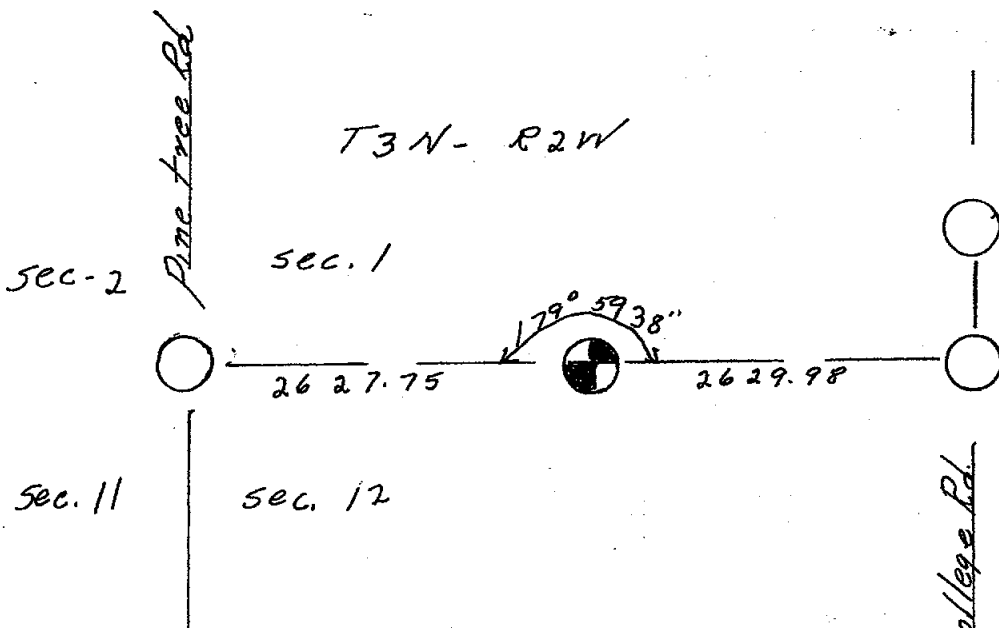
C. Smith

Nov. 15, 1963

MICHIGAN STATE HIGHWAY DEPARTMENT

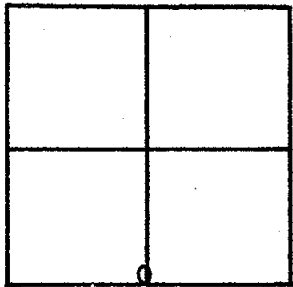
SURVEY CHIEF

K-3 56 DATE



Form 280 (Rev. 3/60) GOV'T. MONUMENT WITNESSES RECORD

T. 3 N. R. 2 W.



SEC. NO. 1

Ingham Co.
Delhi Twp.
DESCRIPTION

South 1/4 corner of Sec 1 Ingham Co.
Found 3/4" Iron pipe 4" below surface
1/2 mile west on SandHill Rd. from
intersection of SandHill Rd. & College
Delhi TWP T-3-N R-2-W

WITNESSES

S 05 W 37.17 12" Maple
North 29.11 30" Ash
N 40 W 48.32 16" Maple

MICHIGAN STATE HIGHWAY DEPARTMENT

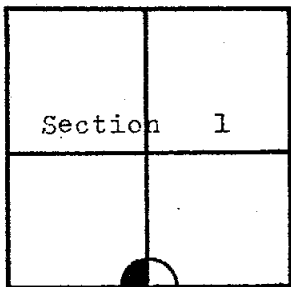
P. H. Rosendale
SURVEY CHIEF

10-24-61

DATE L-3

Form 280 (Rev. 3/60) GOV'T. MONUMENT WITNESSES RECORD

T. 3N R.2W 33035 B



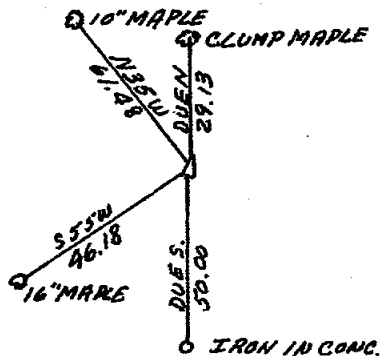
SEC. NO. 1

DESCRIPTION

Found 3/4" Iron pipe in center of Sa
Sandhill road for 1/4 corner common to
sections 1 & 12 Delhi TWP. Ingham
County.

WITNESSES

Iron in Conc. South 50.00
10" Maple N35 W 61.48
16" Maple S55W 46.18
Clump Maple Due N. 29.13



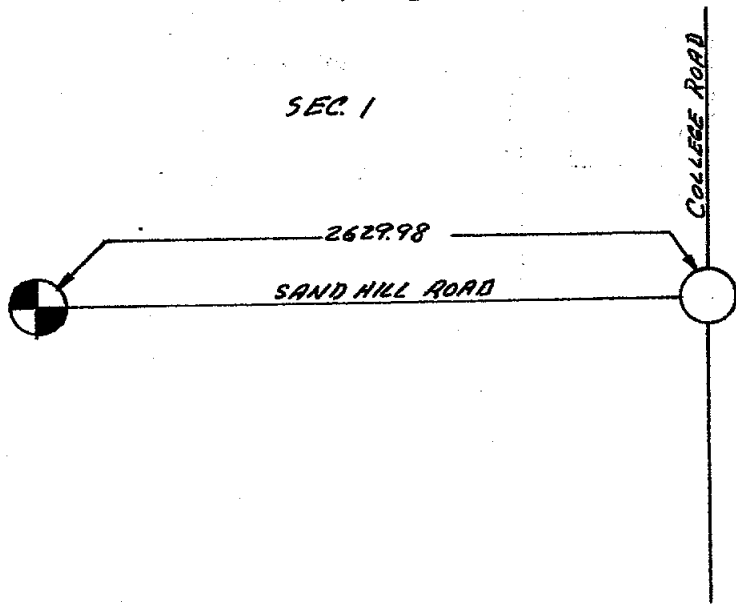
L-3

MICHIGAN STATE HIGHWAY DEPARTMENT

G. E. Smith
SURVEY CHIEF

Oct. 1963
DATE

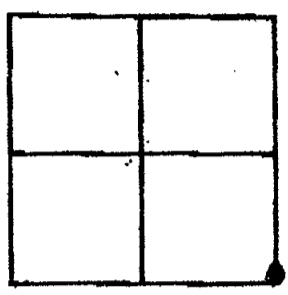
SEC. 1



L-3

Form 280 (Rev. 3/60) GOV'T. MONUMENT WITNESSES RECORD

T. 3 N. R. 2 W.



Ingham Co.
Delhi Twp.
DESCRIPTION

SEC. NO. 1

S.E. Corner of Sec. 1 Ingham County
Found Lge stone and wood stake
raised to surface with 1/2" Iron Pipe
Sandhill Road West & College Rd N. & S.
Delhi TWP. T-3-N R-2-W

WITNESSES

- N 80 W. 35.51 Power Pole
- N 25 E. 100.62 Power Pole
- N 65 W 79.03 G.Rail Post

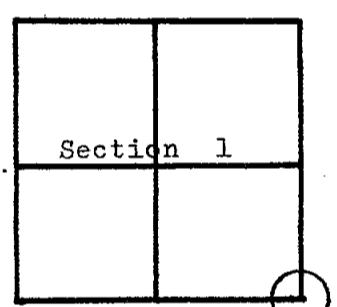
MICHIGAN STATE HIGHWAY DEPARTMENT

P. E. Rosendale
SURVEY CHIEF

10-24-61
DATE M-3

Form 280 (Rev. 3/60) GOV'T. MONUMENT WITNESSES RECORD

T. 3N R. 2W 33035 B



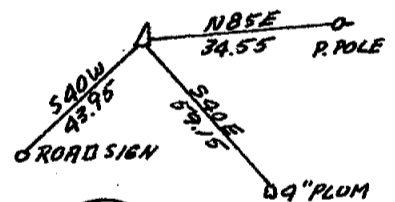
SEC. NO. 1

DESCRIPTION

Found 1/2" pipe in center of College & SandHill road Westfor South East Section corner of section 1 Delhi TWP Ingham County.

WITNESSES

- Road Sign S40W 43.95
- P. Pole N85E 34.55
- 4" Plum S40E 59.15

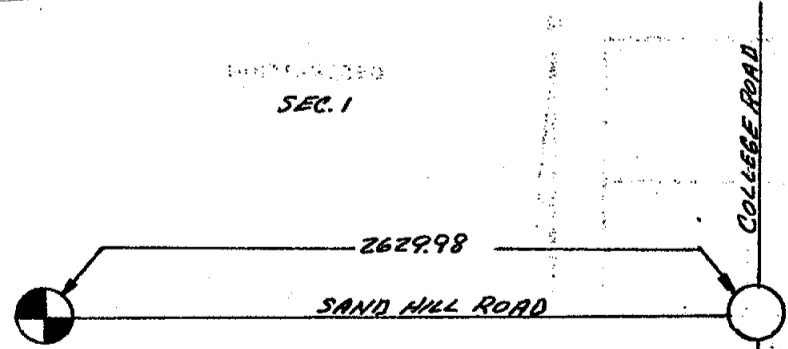


MICHIGAN STATE HIGHWAY DEPARTMENT

C.E. Smith
SURVEY CHIEF

Oct. 1963
DATE

SEC. 1

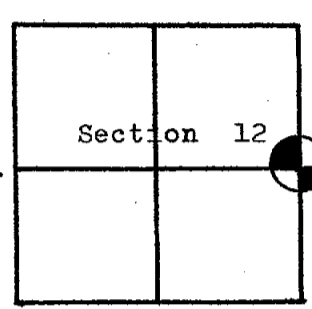


M-3

Form 280
(Rev. 3/60)
GOV'T. MONUMENT WITNESSES RECORD

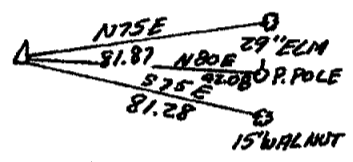
T. 3N R. 2W 33035 B

SEC. NO. 12

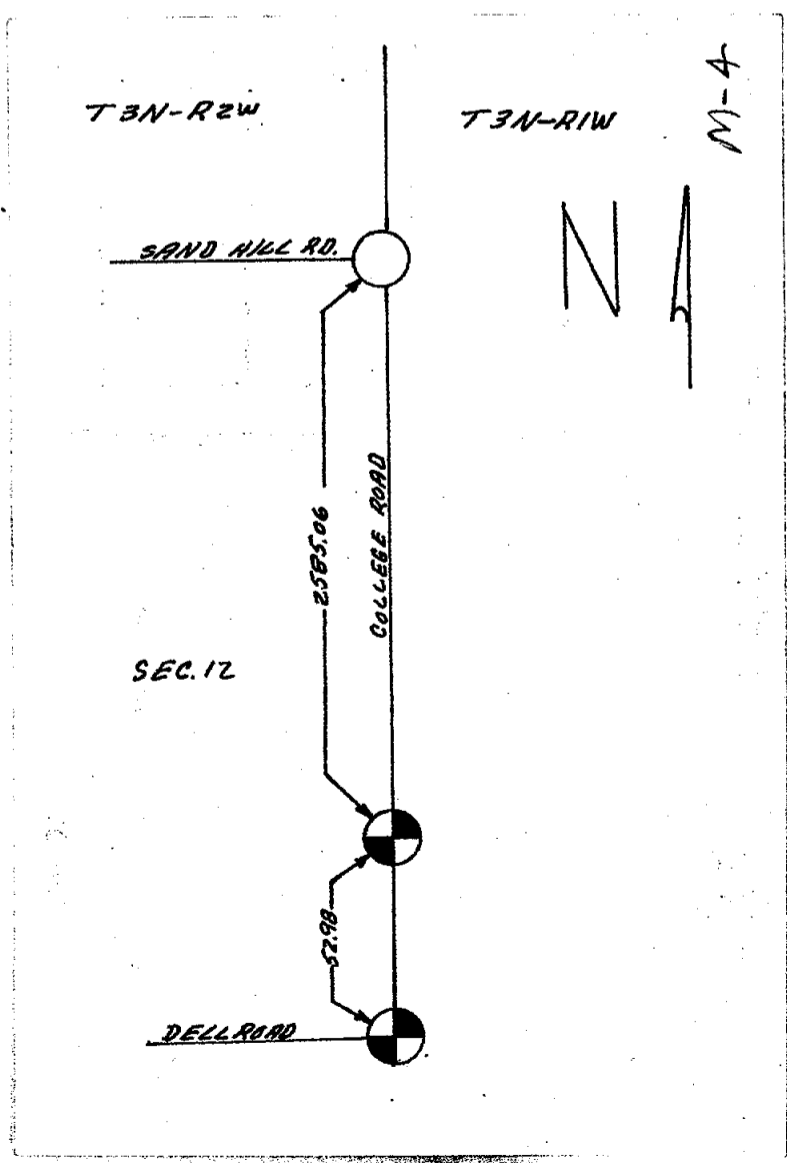


DESCRIPTION
Found large nail in center line of College and Dell road West for the East 1/4 Corner section 12 Delhi TWP Ingham County.

WITNESSES		
29" Elm	N75 E	81.87
15" Walnut	S75E	81.28
P. Pole	N80E	42.08



C.E. Smith *M-4* Oct. 1963
 MICHIGAN STATE HIGHWAY DEPARTMENT SURVEY CHIEF DATE



12" 62/100
 100' 4" W 6'
 Y 22563520
 16 68.78 NW
 Cord.
 68.26 NE

Mon. Box (MSHD 1912)
 300' S of bridge
 I-96

For Stone
 1929
 8 by
 8 PAGES
 (1959)

2" Iron Pipe. Pin on top
 18" Maple 58.0 NNE
 18 Elm 75.3 NW
 3" Elm 82.8 ESE
 13" Cedar 18.2 SSW
 Iron Sign Post 16.6 W
 2 1/2" Pipe (MSHD 1963)
 40" Elm N50E 26.54
 40" Elm S20W 45.46
 14" Maple N50W 60.04

3/4" Iron (MSHD 1912)
 Iron in Conc. S. 50.00
 10" Maple N85W 61.98
 10" Maple S55W 46.18
 61. Maple N 29.13

1/2" Pipe (MSHD 1912)
 Road sign S40W 43.95
 P.R. N85E 54.35
 4" Plum S40E 59.15

Large White Stone
 Brick - Blue Pt.
 00 Top
 S.R. Con. Sch. Wall
 30.3 NW
 Dufferin 78.43 SW
 SW Con. N56. W 111
 138.1 ENE
 Iron Sign Post
 33.9 SE

2" Iron
 24" Maple 42.7 WNW
 25 Elm 53.0 SW
 3" Ash 34.6 N.E.
 Face Arch. Post
 24.9 S
 Face Arch. Post
 25.7 W

Large nail (MSHD 1963)
 24" Elm N75E 81.87
 10" Walnut S75E 81.28
 P.R. N80E 42.08

8" Iron
 54 36.2 SE
 17 NE.
 40.0 SW
 80.0 NW
 37.2 SW

1 1/2" Iron
 P.P. 74.5 N
 12" Hickory 45.3 SW
 P.P. 53.2 153E

Iron
 Arch. Post 32.2 SW
 Arch. Post 34.4 NE
 4" Elm 32.5 SW

4" Marble Stone
 Iron 06320
 10" Walnut 30.2 S
 18" Walnut 55.8 SSW
 Conc. Arch. Post 25.2 W
 8" Elm 87.0 SE

1/2" Iron (MSHD 1963)
 Uses 826 S25W 40.7
 Road sign S25W 48.2
 18" Iron of Heaven S40E 59.15

16522554
 E
 25.3 Post
 5 1/2

5000
 20" Pine 40.2 NE
 NW Con. N56. Wall
 53.0 S
 4" Elm 32.5 SW

3
 Arch. Post at
 Cross P.
 3" Oak 31.1 E
 4" Oak 53.3 N
 3" Oak 7.9 WSW

Pointed stone (MSHD 1912)
 30" Elm 23.5 W
 1 1/2" Iron 33.0 E (SP)
 10" Elm 74.0 SE 57
 5" 10" Elm 29.2 SE

1/2" Iron
 NW

1/4" Iron
 NW

3/4" Iron
 S60W 66.96

Delhi Twp. - Wolverine Eng.

T.P. N.N.E. 66.86'
 T.P. E.N.E. 71.09'
 Guy Pole S.S.E. 45.80'

1368.40'

3894.02'

1966
 X in Rim NW Edge
 later MH. S35E 48.23'
 X in Rim SE Edge
 on MH. N5W 17.78'
 X in Rim NE Edge
 loc. MH. S60W
 30.39'

Mon. Box
 Guy Pole N. 77E 90.27'
 W.d. Cor. fa. post. N. 15W
 52.38'
 E Edge Conc. Pavl. E
 60.7'
 NE Cor. House no. 3322
 1 Pin mon. box W.
 19.80'

1" IRON MON. BOX 1976

n SSW 23.66'
 ple NNW 68.78'
 porch NE 68.26'

1929
 in Red Iron Box
 55E 26.70' to NW
 Conc. Bk. Gar.
 11E 72.14' SW. 1. Stone
 k. off.
 138.75' Sur. Tag
 e Side 16" Cal.

3/4" Iron (1976)
 14" Birch 71°51'E 10.35'
 14" Birch 27°51'E 11.62'
 21" Ash S 36°57'W 27.60'

3/4" Pipe (M.S.H.D. 1963)
 44" Elm N. 50E 66.54'
 P.P. S 20°W 45.46'
 19" Maple N. 35°W 60.04'
 26" Map N 72°55'W 57.14'
 W.d. Pole N 61°40'W 62.60'
 W.d. Pole 27°46'W 45.14'

3/4" Iron (M.S.H.D. 1963)
 Iron in conc. S. 50.00'
 10" Maple N. 35°W 61.48'
 10" Maple S. 55°W 46.18'
 11" Maple N. 29.13'

1/2" Pipe (M.S.H.D. 1963)
 Road sign S. 40°W 43.95'
 P.P. N. 85°E 34.55'
 4" Plum S. 40°E 59.15'

1" (1976)
 NW 47.15'
 NE 54.20'
 SE 42.63'
 SW 47.15'
 (as recorded in Lib. of Land Co. Pg. 35)
 (1972)

R.R. Spike
 6" Pop. N. 45° 21' E 40.40'
 8" Pop. S. 25° 31' E 29.10'

Iron 9/16"
 22" Walnut N.N.E. 70.0'
 6" Walnut S.S.W. 78.10'
 S.E. cor. house N.W. 66.12'
 (as recorded in Lib. of Land Co. Pg. 33)

Iron
 24" Maple W.N.W. 42.7'
 23" Elm S.W. 53.0'
 3" Ash N.E. 34.6'
 Anch. post S 24.9'
 Anch. post W 25.7'

Large nail (M.S.H.D. 1963)
 29" Elm N. 75°E 81.87'
 15" Walnut S. 75°E 81.28'
 P.P. N. 80°E 42.08'

(I.C.R.C. 1967)
 N.E. 86.67'
 S.E. 48.69'
 S.S.W. 57.97'
 N.W. 45.88'
 (as recorded in Lib. of Land Co. Pg. 31)
 (1972)

R.R. Spike (1976)
 Yellow Tag 36" Pop. S. 21' E 40.40'
 N 76° 06' W 71.5' 23'
 Stone Tag 6" Pine S.S.W.
 N.S. 65.55'
 Yellow Tag 2" W. d. 1/2" 39.50'
 N 1° 35' E

1/2" Iron (M.S.H.D.)
 P.P. S. 30° 30' W 53.22'
 12" Hickory N. 63° 30' W 45.49'
 P.P. N. 18° 30' W 76.55'
 (as recorded in Lib. of Land Co. Pg. 27)

Iron, stone
 10" Walnut S. 30.2'
 16" Walnut S.S.W. 35.8'
 Anch. post N. 25.2'
 18" Elm S.E. 52.0'

1/2" Iron (M.S.H.D. 1963)
 U.S.G.S. b.m. S. 25°W 40.9'
 Road sign S. 55°W 42.2'
 13" Tree of heaven S. 70°E 97.63'

NNW 61.41'
 W 35.70'
 SW 52.55'
 E 24.29'

Stone
 30" Pine N.E. 40.2'
 4" Elm S.W. 32.5'
 NW cor. house well S 53.0'

Anch. post of cross fence
 3" Oak E 31.1'
 4" Oak N. 53.3'
 3" Oak W.S.W. 7.9'

Painted stone (1949)
 30" Elm W. 23.5'
 1-1/2" Iron E. 33.0'
 10" Elm S.E. 74.8'
 10" Elm E.S.E. 29.9'

(I.C.R.C. 1964)
 N.E. 56.28'
 N.E. 59.06'
 S.E. 55.84'

3/4" Iron
 Anch. post S.S.W. 37.5'
 Anch. post N.N.E. 33.6'
 NW cor. PP house E.S.E. 65.5'

3/4" Iron (M.S.H.D. 1963)
 T.P. S. 60°W 66.95'
 P.P. N. 15°E 81.45'
 T.P. S. 60°E 100.07'

Delhi Twp. I.C.R.C.

Ingham County