

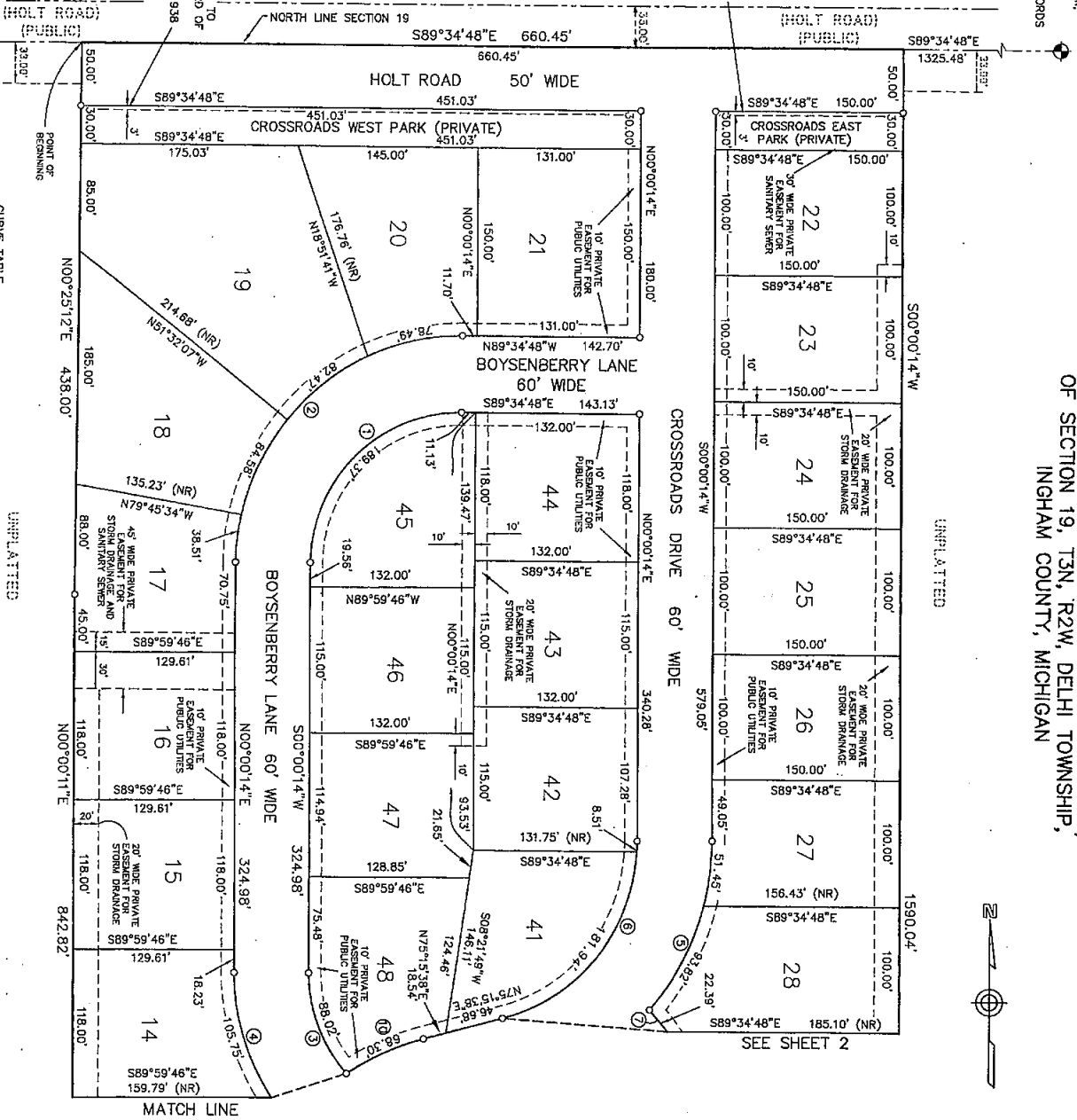
NORTH 1/4 CORNER
SECTION 19, T3N, R2W,
DELI TOWNSHIP,
LIBER 10, PAGE 411,
INGHAM COUNTY RECORDS

COUNTRY CROSSROADS
A SUBDIVISION OF PART OF THE NORTHWEST 1/4
OF SECTION 19, T3N, R2W, DELHI TOWNSHIP,
INGHAM COUNTY, MICHIGAN

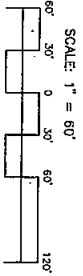
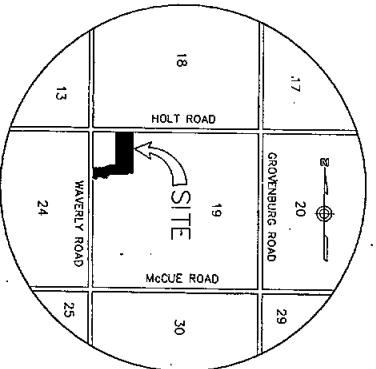
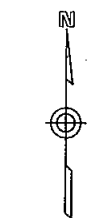
PRIVATE EASEMENT TO
THE LANSING BOARD OF
WATER AND LIGHT
FOR WATER MAIN
PURPOSES

PRIVATE EASEMENT TO
THE LANSING BOARD OF
WATER AND LIGHT
LIBER 2997, PAGE 938
FOR WATER MAIN
PURPOSES

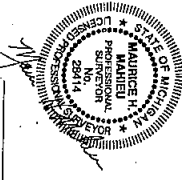
UNPLATTED



UNPLATTED



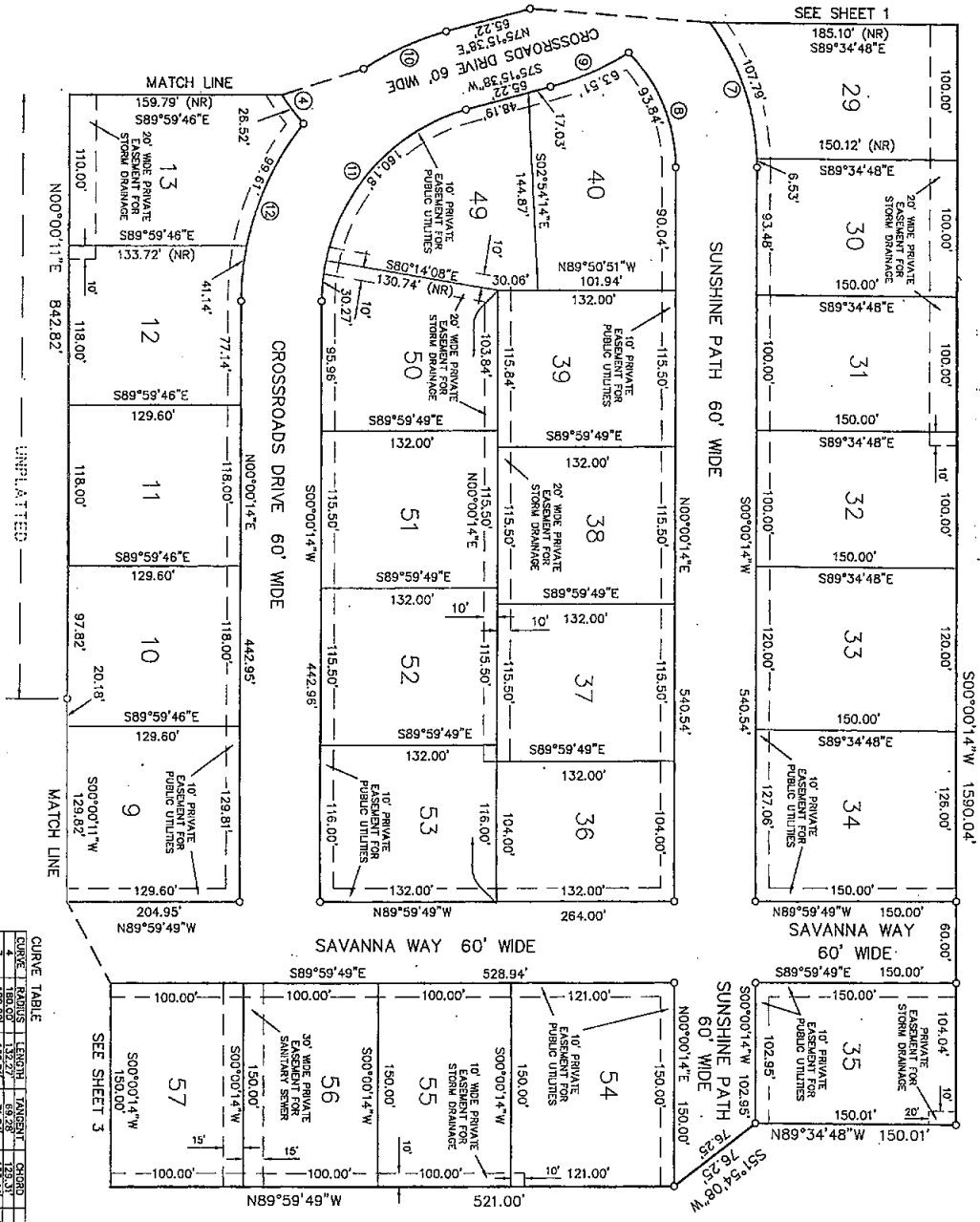
- LEGEND
1. ALL DIMENSIONS ARE IN FEET.
 2. ALL CURVE DIMENSIONS ARE ARC MEASUREMENTS.
 3. MONUMENTS CONSISTING OF A SOLID STEEL ROD 1/2 INCH IN DIAMETER BY 36 INCHES IN LENGTH ENCASED IN A CONCRETE GYNDER 4 INCHES IN DIAMETER BY 36 INCHES IN LENGTH HAVE BEEN PLACED AT THE CORNERS. UNLESS MARKED THUS: (O), (X), (R), (S), (T), (U), (V), (W), (Y), (Z), (AA), (AB), (AC), (AD), (AE), (AF), (AG), (AH), (AI), (AJ), (AK), (AL), (AM), (AN), (AO), (AP), (AQ), (AR), (AS), (AT), (AU), (AV), (AW), (AX), (AY), (AZ), (BA), (BB), (BC), (BD), (BE), (BF), (BG), (BH), (BI), (BJ), (BK), (BL), (BM), (BN), (BO), (BP), (BQ), (BR), (BS), (BT), (BU), (BV), (BW), (BX), (BY), (BZ), (CA), (CB), (CC), (CD), (CE), (CF), (CG), (CH), (CI), (CJ), (CK), (CL), (CM), (CN), (CO), (CP), (CQ), (CR), (CS), (CT), (CU), (CV), (CW), (CX), (CY), (CZ), (DA), (DB), (DC), (DD), (DE), (DF), (DG), (DH), (DI), (DJ), (DK), (DL), (DM), (DN), (DO), (DP), (DQ), (DR), (DS), (DT), (DU), (DV), (DW), (DX), (DY), (DZ), (EA), (EB), (EC), (ED), (EE), (EF), (EG), (EH), (EI), (EJ), (EK), (EL), (EM), (EN), (EO), (EP), (EQ), (ER), (ES), (ET), (EU), (EV), (EW), (EX), (EY), (EZ), (FA), (FB), (FC), (FD), (FE), (FF), (FG), (FH), (FI), (FJ), (FK), (FL), (FM), (FN), (FO), (FP), (FQ), (FR), (FS), (FT), (FU), (FV), (FW), (FX), (FY), (FZ), (GA), (GB), (GC), (GD), (GE), (GF), (GG), (GH), (GI), (GJ), (GK), (GL), (GM), (GN), (GO), (GP), (GQ), (GR), (GS), (GT), (GU), (GV), (GW), (GX), (GY), (GZ), (HA), (HB), (HC), (HD), (HE), (HF), (HG), (HH), (HI), (HJ), (HK), (HL), (HM), (HN), (HO), (HP), (HQ), (HR), (HS), (HT), (HU), (HV), (HW), (HX), (HY), (HZ), (IA), (IB), (IC), (ID), (IE), (IF), (IG), (IH), (II), (IJ), (IK), (IL), (IM), (IN), (IO), (IP), (IQ), (IR), (IS), (IT), (IU), (IV), (IW), (IX), (IY), (IZ), (JA), (JB), (JC), (JD), (JE), (JF), (JG), (JH), (JI), (JJ), (JK), (JL), (JM), (JN), (JO), (JP), (JQ), (JR), (JS), (JT), (JU), (JV), (JW), (JX), (JY), (JZ), (KA), (KB), (KC), (KD), (KE), (KF), (KG), (KH), (KI), (KJ), (KK), (KL), (KM), (KN), (KO), (KP), (KQ), (KR), (KS), (KT), (KU), (KV), (KW), (KX), (KY), (KZ), (LA), (LB), (LC), (LD), (LE), (LF), (LG), (LH), (LI), (LJ), (LK), (LL), (LM), (LN), (LO), (LP), (LQ), (LR), (LS), (LT), (LU), (LV), (LW), (LX), (LY), (LZ), (MA), (MB), (MC), (MD), (ME), (MF), (MG), (MH), (MI), (MJ), (MK), (ML), (MM), (MN), (MO), (MP), (MQ), (MR), (MS), (MT), (MU), (MV), (MW), (MX), (MY), (MZ), (NA), (NB), (NC), (ND), (NE), (NF), (NG), (NH), (NI), (NJ), (NK), (NL), (NM), (NN), (NO), (NP), (NQ), (NR), (NS), (NT), (NU), (NV), (NW), (NX), (NY), (NZ), (OA), (OB), (OC), (OD), (OE), (OF), (OG), (OH), (OI), (OJ), (OK), (OL), (OM), (ON), (OO), (OP), (OQ), (OR), (OS), (OT), (OU), (OV), (OW), (OX), (OY), (OZ), (PA), (PB), (PC), (PD), (PE), (PF), (PG), (PH), (PI), (PJ), (PK), (PL), (PM), (PN), (PO), (PP), (PQ), (PR), (PS), (PT), (PU), (PV), (PW), (PX), (PY), (PZ), (QA), (QB), (QC), (QD), (QE), (QF), (QG), (QH), (QI), (QJ), (QK), (QL), (QM), (QN), (QO), (QP), (QQ), (QR), (QS), (QT), (QU), (QV), (QW), (QX), (QY), (QZ), (RA), (RB), (RC), (RD), (RE), (RF), (RG), (RH), (RI), (RJ), (RK), (RL), (RM), (RN), (RO), (RP), (RQ), (RR), (RS), (RT), (RU), (RV), (RW), (RX), (RY), (RZ), (SA), (SB), (SC), (SD), (SE), (SF), (SG), (SH), (SI), (SJ), (SK), (SL), (SM), (SN), (SO), (SP), (SQ), (SR), (SS), (ST), (SU), (SV), (SW), (SX), (SY), (SZ), (TA), (TB), (TC), (TD), (TE), (TF), (TG), (TH), (TI), (TJ), (TK), (TL), (TM), (TN), (TO), (TP), (TQ), (TR), (TS), (TT), (TU), (TV), (TW), (TX), (TY), (TZ), (UA), (UB), (UC), (UD), (UE), (UF), (UG), (UH), (UI), (UJ), (UK), (UL), (UM), (UN), (UO), (UP), (UQ), (UR), (US), (UT), (UU), (UV), (UW), (UX), (UY), (UZ), (VA), (VB), (VC), (VD), (VE), (VF), (VG), (VH), (VI), (VJ), (VK), (VL), (VM), (VN), (VO), (VP), (VQ), (VR), (VS), (VT), (VU), (VV), (VW), (VX), (VY), (VZ), (WA), (WB), (WC), (WD), (WE), (WF), (WG), (WH), (WI), (WJ), (WK), (WL), (WM), (WN), (WO), (WP), (WQ), (WR), (WS), (WT), (WU), (WV), (WW), (WX), (WY), (WZ), (XA), (XB), (XC), (XD), (XE), (XF), (XG), (XH), (XI), (XJ), (XK), (XL), (XM), (XN), (XO), (XP), (XQ), (XR), (XS), (XT), (XU), (XV), (XW), (XX), (XY), (XZ), (YA), (YB), (YC), (YD), (YE), (YF), (YG), (YH), (YI), (YJ), (YK), (YL), (YM), (YN), (YO), (YP), (YQ), (YR), (YS), (YT), (YU), (YV), (YW), (YX), (YZ), (ZA), (ZB), (ZC), (ZD), (ZE), (ZF), (ZG), (ZH), (ZI), (ZJ), (ZK), (ZL), (ZM), (ZN), (ZO), (ZP), (ZQ), (ZR), (ZS), (ZT), (ZU), (ZV), (ZW), (ZX), (ZY), (ZZ).
 4. LOT CORNERS HAVE BEEN MARKED THUS: (O), (X), (R), (S), (T), (U), (V), (W), (Y), (Z), (AA), (AB), (AC), (AD), (AE), (AF), (AG), (AH), (AI), (AJ), (AK), (AL), (AM), (AN), (AO), (AP), (AQ), (AR), (AS), (AT), (AU), (AV), (AW), (AX), (AY), (AZ), (BA), (BB), (BC), (BD), (BE), (BF), (BG), (BH), (BI), (BJ), (BK), (BL), (BM), (BN), (BO), (BP), (BQ), (BR), (BS), (BT), (BU), (BV), (BW), (BX), (BY), (BZ), (CA), (CB), (CC), (CD), (CE), (CF), (CG), (CH), (CI), (CJ), (CK), (CL), (CM), (CN), (CO), (CP), (CQ), (CR), (CS), (CT), (CU), (CV), (CW), (CX), (CY), (CZ), (DA), (DB), (DC), (DD), (DE), (DF), (DG), (DH), (DI), (DJ), (DK), (DL), (DM), (DN), (DO), (DP), (DQ), (DR), (DS), (DT), (DU), (DV), (DW), (DX), (DY), (DZ), (EA), (EB), (EC), (ED), (EE), (EF), (EG), (EH), (EI), (EJ), (EK), (EL), (EM), (EN), (EO), (EP), (EQ), (ER), (ES), (ET), (EU), (EV), (EW), (EX), (EY), (EZ), (FA), (FB), (FC), (FD), (FE), (FF), (FG), (FH), (FI), (FJ), (FK), (FL), (FM), (FN), (FO), (FP), (FQ), (FR), (FS), (FT), (FU), (FV), (FW), (FX), (FY), (FZ), (GA), (GB), (GC), (GD), (GE), (GF), (GG), (GH), (GI), (GJ), (GK), (GL), (GM), (GN), (GO), (GP), (GQ), (GR), (GS), (GT), (GU), (GV), (GW), (GX), (GY), (GZ), (HA), (HB), (HC), (HD), (HE), (HF), (HG), (HH), (HI), (HJ), (HK), (HL), (HM), (HN), (HO), (HP), (HQ), (HR), (HS), (HT), (HU), (HV), (HW), (HX), (HY), (HZ), (IA), (IB), (IC), (ID), (IE), (IF), (IG), (IH), (II), (IJ), (IK), (IL), (IM), (IN), (IO), (IP), (IQ), (IR), (IS), (IT), (IU), (IV), (IW), (IX), (IY), (IZ), (JA), (JB), (JC), (JD), (JE), (JF), (JG), (JH), (JI), (JJ), (JK), (JL), (JM), (JN), (JO), (JP), (JQ), (JR), (JS), (JT), (JU), (JV), (JW), (JX), (JY), (JZ), (KA), (KB), (KC), (KD), (KE), (KF), (KG), (KH), (KI), (KJ), (KK), (KL), (KM), (KN), (KO), (KP), (KQ), (KR), (KS), (KT), (KU), (KV), (KW), (KX), (KY), (KZ), (LA), (LB), (LC), (LD), (LE), (LF), (LG), (LH), (LI), (LJ), (LK), (LL), (LM), (LN), (LO), (LP), (LQ), (LR), (LS), (LT), (LU), (LV), (LW), (LX), (LY), (LZ), (MA), (MB), (MC), (MD), (ME), (MF), (MG), (MH), (MI), (MJ), (MK), (ML), (MM), (MN), (MO), (MP), (MQ), (MR), (MS), (MT), (MU), (MV), (MW), (MX), (MY), (MZ), (NA), (NB), (NC), (ND), (NE), (NF), (NG), (NH), (NI), (NJ), (NK), (NL), (NM), (NN), (NO), (NP), (NQ), (NR), (NS), (NT), (NU), (NV), (NW), (NX), (NY), (NZ), (OA), (OB), (OC), (OD), (OE), (OF), (OG), (OH), (OI), (OJ), (OK), (OL), (OM), (ON), (OO), (OP), (OQ), (OR), (OS), (OT), (OU), (OV), (OW), (OX), (OY), (OZ), (PA), (PB), (PC), (PD), (PE), (PF), (PG), (PH), (PI), (PJ), (PK), (PL), (PM), (PN), (PO), (PP), (PQ), (PR), (PS), (PT), (PU), (PV), (PW), (PX), (PY), (PZ), (QA), (QB), (QC), (QD), (QE), (QF), (QG), (QH), (QI), (QJ), (QK), (QL), (QM), (QN), (QO), (QP), (QQ), (QR), (QS), (QT), (QU), (QV), (QW), (QX), (QY), (QZ), (RA), (RB), (RC), (RD), (RE), (RF), (RG), (RH), (RI), (RJ), (RK), (RL), (RM), (RN), (RO), (RP), (RQ), (RS), (RT), (RU), (RV), (RW), (RX), (RY), (RZ), (SA), (SB), (SC), (SD), (SE), (SF), (SG), (SH), (SI), (SJ), (SK), (SL), (SM), (SN), (SO), (SP), (SQ), (SR), (SS), (ST), (SU), (SV), (SW), (SX), (SY), (SZ), (TA), (TB), (TC), (TD), (TE), (TF), (TG), (TH), (TI), (TJ), (TK), (TL), (TM), (TN), (TO), (TP), (TQ), (TR), (TS), (TT), (TU), (TV), (TW), (TX), (TY), (TZ), (UA), (UB), (UC), (UD), (UE), (UF), (UG), (UH), (UI), (UJ), (UK), (UL), (UM), (UN), (UO), (UP), (UQ), (UR), (US), (UT), (UU), (UV), (UW), (UX), (UY), (UZ), (VA), (VB), (VC), (VD), (VE), (VF), (VG), (VH), (VI), (VJ), (VK), (VL), (VM), (VN), (VO), (VP), (VQ), (VR), (VS), (VT), (VU), (VV), (VW), (VX), (VY), (VZ), (WA), (WB), (WC), (WD), (WE), (WF), (WG), (WH), (WI), (WJ), (WK), (WL), (WM), (WN), (WO), (WP), (WQ), (WR), (WS), (WT), (WU), (WV), (WW), (WX), (WY), (WZ), (XA), (XB), (XC), (XD), (XE), (XF), (XG), (XH), (XI), (XJ), (XK), (XL), (XM), (XN), (XO), (XP), (XQ), (XR), (XS), (XT), (XU), (XV), (XW), (XX), (XY), (XZ), (YA), (YB), (YC), (YD), (YE), (YF), (YG), (YH), (YI), (YJ), (YK), (YL), (YM), (YN), (YO), (YP), (YQ), (YR), (YS), (YT), (YU), (YV), (YW), (YX), (YZ), (ZA), (ZB), (ZC), (ZD), (ZE), (ZF), (ZG), (ZH), (ZI), (ZJ), (ZK), (ZL), (ZM), (ZN), (ZO), (ZP), (ZQ), (ZR), (ZS), (ZT), (ZU), (ZV), (ZW), (ZX), (ZY), (ZZ).
 5. (R) INDICATES NONRADIAL LOT LINES.
 6. (NR) INDICATES NONRADIAL LOT LINES.
 7. BEARINGS WERE ESTABLISHED FROM THE PLAT OF FAWNCREEK, RECORDED IN LIBER 12 OF PLATS PAGES 22 AND 23, EATON COUNTY RECORDS.



CURVE TABLE

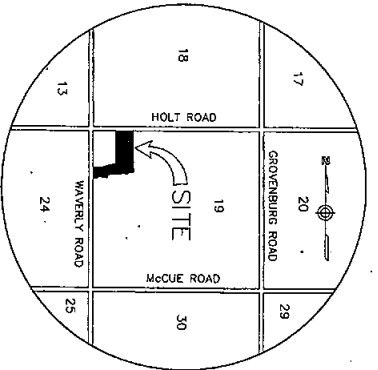
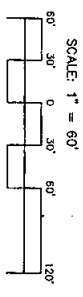
CURVE	RADIUS	LENGTH	TANGENT	CHORD	BEARING	AREA
1	180.00'	100.00'	100.00'	100.00'	N45°00'00"W	15,708.00
2	180.00'	100.00'	100.00'	100.00'	N45°00'00"W	15,708.00
3	180.00'	100.00'	100.00'	100.00'	N45°00'00"W	15,708.00
4	180.00'	100.00'	100.00'	100.00'	N45°00'00"W	15,708.00
5	180.00'	100.00'	100.00'	100.00'	N45°00'00"W	15,708.00
6	180.00'	100.00'	100.00'	100.00'	N45°00'00"W	15,708.00
7	180.00'	100.00'	100.00'	100.00'	N45°00'00"W	15,708.00
8	180.00'	100.00'	100.00'	100.00'	N45°00'00"W	15,708.00
9	180.00'	100.00'	100.00'	100.00'	N45°00'00"W	15,708.00
10	180.00'	100.00'	100.00'	100.00'	N45°00'00"W	15,708.00

COUNTRY CROSSROADS
 A SUBDIVISION OF PART OF THE NORTHWEST 1/4
 OF SECTION 19, T3N, R2W, DELHI TOWNSHIP,
 INGHAM COUNTY, MICHIGAN

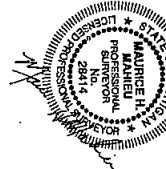


CURVE TABLE

CURVE	RADIUS	LENGTH	TANGENT	CHORD	BEARING	BETA
1	180.00'	132.77'	66.38'	128.31'	S11°07'48"E	47°20'05"
2	180.00'	132.77'	66.38'	128.31'	S11°07'48"E	47°20'05"
3	180.00'	132.77'	66.38'	128.31'	S11°07'48"E	47°20'05"
4	180.00'	132.77'	66.38'	128.31'	S11°07'48"E	47°20'05"
5	180.00'	132.77'	66.38'	128.31'	S11°07'48"E	47°20'05"
6	180.00'	132.77'	66.38'	128.31'	S11°07'48"E	47°20'05"
7	180.00'	132.77'	66.38'	128.31'	S11°07'48"E	47°20'05"
8	180.00'	132.77'	66.38'	128.31'	S11°07'48"E	47°20'05"
9	180.00'	132.77'	66.38'	128.31'	S11°07'48"E	47°20'05"
10	180.00'	132.77'	66.38'	128.31'	S11°07'48"E	47°20'05"
11	180.00'	132.77'	66.38'	128.31'	S11°07'48"E	47°20'05"
12	180.00'	132.77'	66.38'	128.31'	S11°07'48"E	47°20'05"



- LEGEND**
1. ALL DIMENSIONS ARE IN FEET.
 2. ALL CURVE DIMENSIONS ARE ARC MEASUREMENTS.
 3. MONUMENTS CONSISTING OF A SOLID STEEL ROD ENCASED IN A CONCRETE CYLINDER 4 INCHES IN DIAMETER, 36 INCHES IN LENGTH HAVE BEEN PLACED AT ALL CORNERS AND LENGTH HAVE BEEN PLACED AT ALL CORNERS HAVE BEEN MARKED WITH A STEEL ROD 1/2 INCH IN DIAMETER BY 18 INCHES.
 4. LOT CORNERS HAVE BEEN MARKED WITH A STEEL ROD 1/2 INCH IN DIAMETER BY 18 INCHES.
 5. (R) INDICATES RADIAL LOT LINES.
 6. (NR) INDICATES NONRADIAL LOT LINES.
 7. BEARINGS WERE ESTABLISHED FROM THE PLAT OF FARMCREEK, RECORDED IN LIBER 12 OF PLATS PAGES 22 AND 23, EATON COUNTY RECORDS.



COUNTRY CROSSROADS
A SUBDIVISION OF PART OF THE NORTHWEST 1/4
OF SECTION 19, T3N, R2W, DELHI TOWNSHIP,
INGHAM COUNTY, MICHIGAN

SURVEYOR'S CERTIFICATE

I, Maurice H. Mohler, surveyor, certify that:
 follows:
 I have surveyed, divided and mapped the land shown on this plat, described as

COUNTRY CROSSROADS, a Subdivision of part of the Northwest 1/4 of Section 19, T3N, R2W, Delhi Township, Ingham County, Michigan, described as beginning at a point on the North line of said Section 19, S89°34'48" E B80.00 feet from the Northwest Corner of said Section 19, thence continuing along said line S89°34'48" E 860.49 feet, thence S00°00'14" W 1350.04 feet, thence N89°34'48" W 130.01 feet, thence S81°34'08" W 76.25 feet, thence N89°34'48" W 521.00 feet; thence S00°08'00" E 70.00 feet, thence S89°34'00" W 150.00 feet, thence N53°08'10" W 74.08 feet, thence S89°34'00" W 130.85 feet, thence S00°08'00" E 75.00 feet; thence S89°34'00'00" W 416.00 feet, thence N89°34'00" E 380.00 feet; thence N00°00'11" E 642.52 feet, thence N00°29'12" E 438.00 feet to the point of beginning, containing 64 lots numbered 1 through 64 inclusive and four (4) public utility easements, to-wit: one (1) utility easement for the Ingham County and Firefly Park South, and 32.51 acres.

That I have made such survey, land division and plat by the direction of the owners of such land.
 That such plat is a correct representation of all the exterior boundaries of the land surveyed and the subdivision of it.

That the required monuments and lot markers have been located in the ground or that survey has been deposited with the municipality, as required by Section 125 of the Act.

That the accuracy of the survey is within the limits required by Section 128 of the Act and as explained in the legend.
 That the bearings shown on the plat are expressed as required by Section 128 (3) of the Act and as explained in the legend.

WOLVERINE ENGINEERS AND SURVEYORS, INC.
 315 N. N. Street
 Mason, MI 48854



CERTIFIED TRUE COPY OF
 RECORDED PLAT
 BY DEPARTMENT OF LABOR
 AND ECONOMIC GROWTH
 BY Maurice H. Mohler
 MAURICE H. MOHLER, P.S., DIRECTOR
 OFFICE OF LAND SURVEYS
 AND REMONUMENTATION
 DATE 10-11-2005

PROPRIETOR'S CERTIFICATE

member, by Robert Gorchow, copartner
CENTENNIAL LAND, LLC
 Centennial Land, LLC, duly organized and existing under the laws of the State of Michigan by G. K. Partnership, member as
 proprietor, has caused the land embraced in this plat to be surveyed, divided, mapped and dedicated as represented on this plat, and that Crossroads West Park, Crossroads East Park, Firefly Park North, and Firefly Park South are private parks for the use of the lot owners of Country Crossroads and any lot owner of future Country Crossroads whose title can be traced to Centennial Land, LLC, that the streets are for the use of the public, that the public utility easements are private easements and that all other easements are for the uses shown on the plat.

Robert Gorchow
 G.K. Partnership, member
 By Robert Gorchow, copartner
Robert Gorchow
 Bruce Korstange (Partner)

ACKNOWLEDGMENT

State of Michigan)
 Ingham County)

Personally came before me this 23rd day of May, 2005
 liability company to and Bruce Korstange, member of the above named limited instrument and to me known to be such members and acknowledged that they executed the foregoing instrument, as such members as the free act and deed of said limited liability company by its authority.

Notary Public John F. Johnson Ingham County, Michigan
 My Commission Expires December 31, 2011 Acting in Ingham County.

PROPRIETOR'S CERTIFICATE

INDEPENDENT BANK SOUTH MICHIGAN
 Independent Bank-South Michigan, a Michigan banking corporation duly organized under the laws of the State of Michigan, has caused the land embraced in this plat to be surveyed, divided, mapped and dedicated as represented on this plat, and that Crossroads West Park, Crossroads East Park, Firefly Park North, and Firefly Park South are private parks for the use of the lot owners of Country Crossroads and any lot owner of future Country Crossroads whose title can be traced to Centennial Land, LLC, that the streets are for the use of the public, that the public utility easements are private easements and that all other easements are for the uses shown on the plat.

Dave Gillison
 Dave Gillison (Vice President)

ACKNOWLEDGMENT

State of Michigan)
 Ingham County)

Personally came before me this 24th day of May, 2005
 person who executed the foregoing instrument, and to me known to be such Vice President of said corporation, and acknowledged that the executed the foregoing instrument on such officer as the free act and deed of said corporation, by its authority.

Notary Public Rebecca Ingham County, Michigan
 My Commission Expires 12-18-07 Acting in Ingham County.

COUNTY TREASURER'S CERTIFICATE

The records in my office show no unpaid taxes or special assessments for the five years preceding June 24, 2005 involving the lands included in this plat.

Eric Schertzing
 Eric Schertzing, Ingham County Treasurer

COUNTY DRAIN COMMISSIONER'S CERTIFICATE

Approved on JUNE 24, 2005 as complying with Section 182 of Act 288, P.A. of 1987 and applicable rules and regulations published by my office in the County of Ingham.

Derek E. Undermyer
 Derek E. Undermyer, Ingham County Drain Commissioner

COUNTY ROAD COMMISSIONER'S CERTIFICATE

Approved on May 14, 2005 as complying with Section 183 of Act 288, P.A. of 1987 and applicable published rules and regulations of the Board of Road Commissioners of Ingham County.

John M. McDonald
 John M. McDonald, Chair

CERTIFICATE OF MUNICIPAL APPROVAL

I certify that this plat was approved by the Township Board of the Charter Township of Delhi at a meeting held May 12, 2005 that public reviewed and found to be in compliance with Act 288, P.A. 1987, that public approval has been indicated and are ready for completion and that survey has been posted for a period of 30 days and lot markers within a reasonable length of time not to exceed one year from the above date.

Evan Hope
 Evan Hope, Township Clerk

COUNTY PLAT BOARD CERTIFICATE

This plat has been reviewed and is approved by the Ingham County Plat Board on May 20, 2005, as being in compliance with all of the provisions of Act 288, P.A. of 1987 and the Plat Board's applicable rules and regulations.

Paula Johnson
 Paula Johnson, Register of Deeds
Mike Bryanton
 Mike Bryanton, County Clerk

RECORDING CERTIFICATE

State of Michigan)
 Ingham County)

This plat was received for record on the 24th day of September, 2005 at 4:23 p.m. and recorded in Liber 96 of Plots on Page(s) 32, 33, 34, 35.

Paula Johnson, Register of Deeds