

INGHAM COUNTY - DELHI TWP.
LAND CORNER RECORDATION CERTIFICATE
 FILING REQUIREMENT OF ACT 74, MICH. P.A.1970

LIBER 6 PG 5
 FILED

FOR CORNERS OF -:	LOCATED IN -:	CORNER CODE NUMBER
1. PUBLIC LAND SURVEY _____	T. <u>3</u> N. <u>2</u> W. <u>X</u> S. <u>X</u> R. _____	A-8
2. PROPERTY CONTROLLING IN SECTION _____	T. _____ N. _____ E. _____ S. _____ R. _____ W. _____	
3. MISCELLANEOUS PROPERTY IN SECTION _____	T. _____ N. _____ E. _____ S. _____ R. _____ W. _____	
4. LOT NO. _____, RECORDED PLAT _____		
5. PRIVATE CLAIMS _____		

JAN 24 2 49 PM '80
 REGISTER OF DEEDS
Paul Johnson
 INGHAM COUNTY, MICH.
 REGISTER OF DEEDS STAMP AND
 FILING NUMBER

I, Ronnie M. Lester, do hereby certify that under requirements of P.A. 74, Michigan P.A. of 1970, the corner points mentioned in lines 1 and 2 above were, in a field survey on October 19, 1979, established, re-established, monumented, re-monumented, recovered or restored as expressed below and in conformance with regulations and rules therefore as required in the current manual of survey instructions of the United States Department of the Interior, Bureau of Land Management or by a decree of a court of law. Furthermore, that the corner points mentioned in lines 3, 4 and 5 above were, in a field survey on _____, 19____, found, recovered, restored, established or re-established as provided by _____ by a Decree of a Court of law.

A-8

A. Description of original monument and accessories and/or subsequent restoration:
 No post set in original government survey.
 Corner referred to in a survey by T.J. Brown, Co. Surveyor, December 3, 1867 (v.3, p.34).
 Corner identified as a stone in a survey by John McCreary, Co. Surveyor, October 19 through 22, 1892 (v.4, p.26-27).

A-8

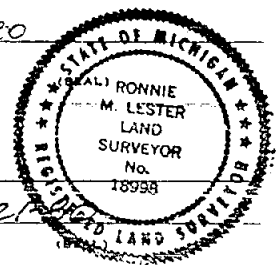
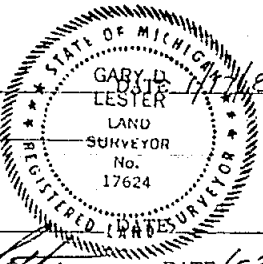
B. Description of corner evidence found and/or method applied in restoring or re-establishing corner:
 Excavated a hole 6' x 6' to an average depth of 3.0' mostly west of the centerline of Waverly Road and south of fence line to the east. Found large pointed stone in natural soil 2.6' below road surface, + 3.95' west of centerline of Waverly Road and + 6.26' south of fence line to the east. Accepted location of stone for corner as called for by John McCreary, County Surveyor. Measured south + 2640' to A-9 and north + 2650' to A-7. Excavation conducted by Ingham County Survey and Remonumentation Project crew.

A-8

C. Description of monument for corner and accessories established to perpetuate locating the position of the corner:
 W $\frac{1}{2}$ Corner, Section 19, T3N-R2W
 Set 4" x 36" concrete monument with $\frac{1}{2}$ " x 38" rerod and cap #18998, with concrete collar and cover in location of stone as described above:
 Nail & tag, #18998, south side 24" Maple, NE, 42.32'
 Nail & tag, #18998, south side 48" Maple, East, 61.32'
 Nail & tag, #18998, south side 36" Maple, SE, 67.61'
 $\frac{1}{2}$ " iron in monument box M-8 Windsor Twp., T3N-R3W, Eaton County, North, 11.25'

SIGNED BY Ronnie M. Lester

SURVEYOR'S MICHIGAN REGISTRATION NO. 18998



SIGNED BY _____
 CHIEF OF SURVEY PARTY

APPROVED AND SIGNED BY [Signature] DATE 1-21-80
 MICHIGAN REGISTERED LAND SURVEYOR

Director, Ingham County Survey
 and Remonumentation Project

SURVEYOR'S MICHIGAN REGISTRATION NO. 17624

1762

LAND CORNER RECORDATION CERTIFICATE
 FILING REQUIREMENT OF ACT 74, MICH. P.A. 1970

FOR CORNERS OF--	LOCATED IN--	CORNER CODE NUMBER
1. PUBLIC LAND SURVEY	T. 3 N. R. 2 W.	C-8
2. PROPERTY CONTROLLING IN SECTION	T. S. R. W.	
3. MISCELLANEOUS PROPERTY IN SECTION	T. S. R. W.	
4. LOT NO. _____	RECORDED PLAT _____	
5. PRIVATE CLAIMS _____		

6 PG 152

FILED

JAN 29 9 36 AM '81

REGISTER OF DEEDS

Paula Johnson
 INGHAM COUNTY, MICH.

REGISTER OF DEEDS STAMP AND FILING NUMBER

I, Ronnie M. Lester, do hereby certify that under requirements of P.A. 74, Michigan P.A. of 1970, the corner points mentioned in lines 1 and 2 above were, in a field survey on September 5, 1980, established, re-established, monumented, re-monumented, recovered or restored as expressed below and in conformance with regulations and rules therefore as required in the current manual of survey instructions of the United States Department of the Interior, Bureau of Land Management or by a decree of a court of law. Furthermore, that the corner points mentioned in lines 3, 4 and 5 above were, in a field survey on _____, 19____, found, recovered, restored, established or re-established as expressed below and in conformance with the rules of the Michigan State Board of Registration for Land Surveyors or, by a

A. Description of original monument and accessories established to locate the position of the corner:

C-8

Corner set in original government survey by Misgrove Evans, December 24 - January 8, 1827. Corner referred to in a survey of Park Road (now Krantz Road) by A. Jackson, May 2nd, 1838. Corner referred to in surveys of T.J. Brown, Co. Surveyor, April 19, 1854 (v.C, p.40) and March 18, 1874 (v.3, p.81). Corner established by measurement and a "stone and crockery" set in a survey by John McCreary, Deputy County Surveyor, October 19-22, 1862. Corner identified as an "iron under flat stone, 3/4" pipe to surface" in the Ingham County Road Commission records, revised grid map, 1969.

B. Description of corner evidence found and/or method applied in restoring or re-establishing corner:

C-8

Excavated a 10' x 10' hole to an average depth of 4' at the intersection of the centerlines of Krantz Road and Grovenburg Road. Found 3/4" pipe in monument box at the intersection of the centerlines of Krantz Road and Grovenburg Road + 1.0' below road surface. Accepted 3/4" pipe for corner as called for in the Ingham County Road Commission records. Excavation conducted by Ingham County Survey and Remonumentation Project crew.

C. Description of monument for corner and accessories established to perpetuate locating the position of the corner:

C-8

E₄ Corner, Section 19, T3N-R2W
 Set 4" x 36" concrete monument with 1/2" x 38" rerod and cap #18998 with concrete collar and cover in location of 3/4" pipe as described above:
 Nail & tag, #18998, south side 29" wild Cherry, NE, 46.39'
 Nail & tag, #18998, southwest side power pole, NW, 41.99'
 Nail & tag, #18998, south side 10" Ash, SW, 57.36'
 Nail & tag, #18998, southwest side 24" Walnut, SE, 60.68'

SIGNED BY Ronnie M. Lester DATE 1/21/81

SURVEYOR'S MICHIGAN REGISTRATION NO. 18998

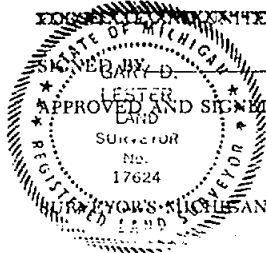
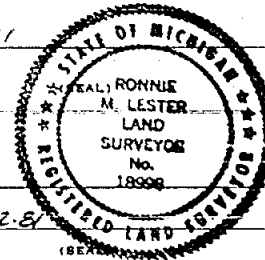
EDUCATIONAL REQUIREMENTS MET BY SURVEYOR

APPROVED AND SIGNED BY Barry D. Lester DATE 1-22-81

Barry D. Lester
 Surveyor
 No. 17624

CHIEF OF SURVEY PARTY
 Director, Ingham County Survey
 and Remonumentation Project

SURVEYOR'S MICHIGAN REGISTRATION NO. 17624



LAND CORNER RECORDATION CERTIFICATE

FILING REQUIREMENT OF ACT 74, MICH. P.A. 1970
N 1/4 corner, Section 19, T3N, R2W, Delhi Township
Ingham County

LABER 3 PG 243
FILED

FOR CORNERS OF--	LOCATED IN--	CORNER CODE NUMBER
1. PUBLIC LAND SURVEY	T. 3N S. 2. R. 2W	B-7
2. PROPERTY CONTROLLING IN SECTION	T. S. R. W.	
3. MISCELLANEOUS PROPERTY IN SECTION	T. S. R. W.	
4. LOT NO. _____	RECORDED PLAT _____	
5. PRIVATE CLAIMS _____		

Oct 2 12 30 PM '74
REGISTER OF DEEDS
Conrad M. Lewis
INGHAM COUNTY, MICH.

REGISTER OF DEEDS STAMP AND FILING NUMBER

I, James E. Stephens do hereby certify that under requirements of P.A. 74, Michigan P.A. of 1970 the corner points mentioned in lines 1 and 2 above (identified with circles on index code diagram - over) were, in a field survey on Sept. 19 1974, established, re-established, monumented, re-monumented, recovered or restored as expressed below and in conformance with regulations and rules therefore as required in the current manual of survey instructions of the United States Department of the Interior, Bureau of Land Management or by a Decree of a court of law. Furthermore, that the corner points mentioned in lines 3, 4 and 5 above were, in a field survey on 19, found, recovered, restored, established or re-established as expressed below and in conformance with the rules of the Michigan State Board of Registration for Land Surveyors or, by a Decree of a Court of law:

A. Description of original monument and accessories and/or subsequent restoration:

The original monument and accessories were not found.

B. Description of corner evidence found and/or method applied in restoring or re-establishing corner:

A railroad spike was found at the intersection of centerlines of Holt Road and Gilbert Road.

Researched records of eight area Registered Land Surveyors.

C. Description of monument for corner and accessories established to perpetuate locating the position of the corner:

The railroad spike was left in position with the following witnesses;

Survey tags and nails in:
North side of a utility pole, S27°E 55.08 feet.
South side of a 36" Maple tree, N43°W 42.32 feet.
South side of a 36" Maple tree, N60°W 57.00 feet.

SIGNED BY *James E. Stephens*
SURVEYOR'S MICHIGAN REGISTRATION NO. 16053

DATE October 2, 1974

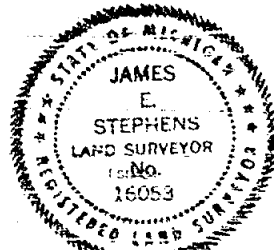
FOR STATE AND UNITED STATES AGENCIES:

SIGNED BY _____ CHIEF OF SURVEY PARTY

DATE

APPROVED AND SIGNED BY _____ MICHIGAN REGISTERED LAND SURVEYOR

DATE



SURVEYOR'S MICHIGAN REGISTRATION NO.

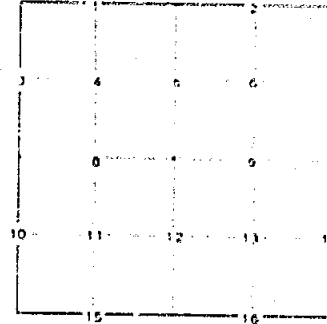
CORNER NUMBERING CODE DIAGRAMS FOR IDENTIFYING LAND CORNER RECORDATIONS AND INDEXING

FOR PUBLIC LAND SURVEY CORNERS IN THE
T. 3N, R. 2W (MENTIONED OVER)

	A	B	C	D	E	F	G	H	I	J	K	L	M
2	6		5		4		3		2		1		
3													
4	7		8		9		10		11		12		
5													
6	10		17		16		15		14		13		
7	●												
8	19		20		21		22		23		24		
9													
10	30		29		28		27		26		25		
11													
12	31		32		33		34		35		36		
13													

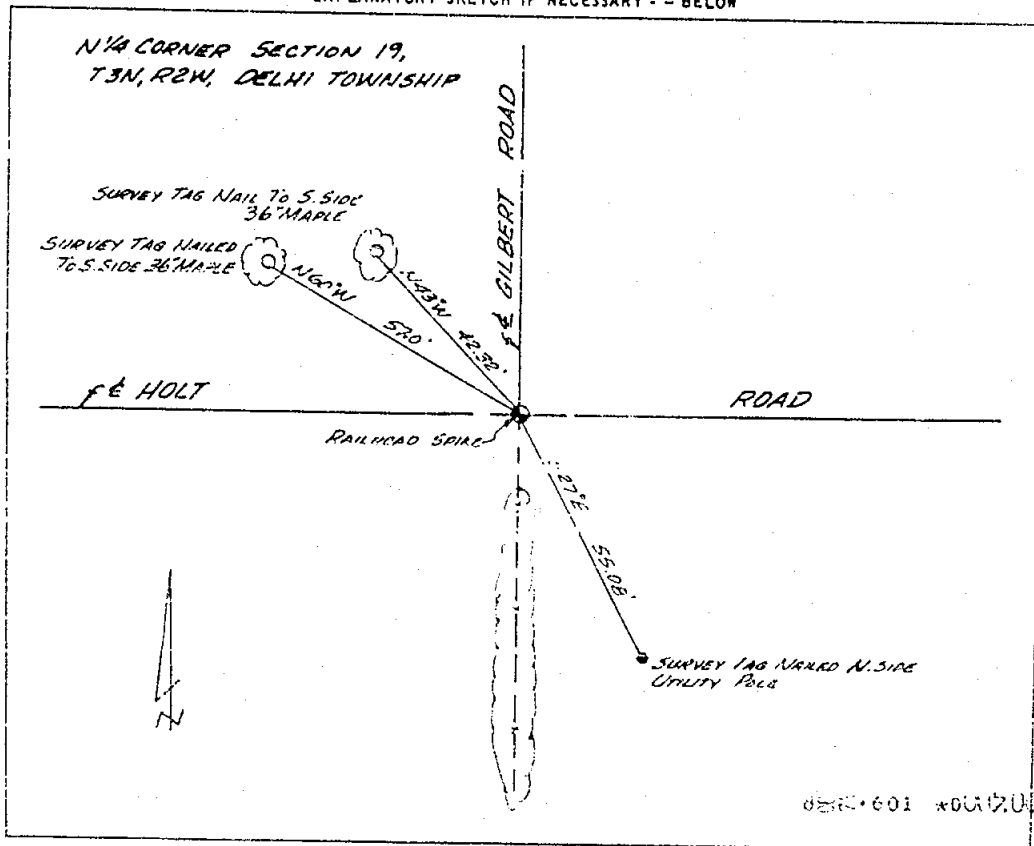
Apply letter prefix for corner points encircled above for identifying corner recordation numbers over.

FOR PROPERTY CONTROLLING AND MISC. PROPERTY CORNERS WITHIN THE SECTION (MENTIONED OVER AND EXCLUDE LIFE CORNER)



1. Above coded numbers are positioned on 1/16 fractional lines of the section.
2. Township corner code numbers shall be applied to corners of above typical section not numbered.
3. Miscellaneous property corners within a section, located at points other than numbered above, shall be referenced to at least two of above corner code numbers.
4. Private claim corners to be tied to rectangular.

EXPLANATORY SKETCH IF NECESSARY - - BELOW



LAND CORNER RECORDATION CERTIFICATE
Filing Requirement of Act 74, Mich. P.A. 1970

For corners in

INGHAM COUNTY Located in Corner Code #

DELHI TOWNSHIP
1 Public Land Survey

T. R. 2W
T. R.
T. R.
T. R.
S. T. R.
S. T. R.
S. T. R.

B-7

Paula Johnson
INGHAM COUNTY
REGISTER OF DEEDS RECORDED
ENGINEER SURVEYING & ENGINEER

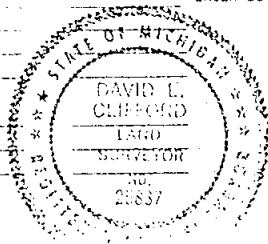
L-10 P-411

CPAR 9 00 2003-019582

2 Property Containing
in Section

3 Miscellaneous
Property in Sec

4 Lot No. Recorded Plat



Register of Deeds Stamp & File Number

I, DAVID L. CLIFFORD, in a field survey on JAN 08 1999 Do hereby state that under requirements of P.A. 74 Michigan P.A. of 1970, the corner points mentioned in lines 1 and 2 above were in conformance with regulations and rules therefore as required in the current manual of survey instructions of the United States Department of the Interior, Bureau of Land Management or by a decree of a Court of Law and/or that the corner points mentioned in lines 3, 4 and 5 above were in conformance with the rules of the Michigan Board of Land Surveyors or by a Decree of a Court of Law established re-established, monumented recovered found as expressed below

NOTE: Not more than 2 corners, all in the same town and range, may be recorded on this certificate.

A. Description of original monument and accessories and/or subsequent restoration

- 1 ORIGINAL POST SET BY MUMFORD EVANS, DEPUTY SURVEYOR IN MAR, 1827. TAM 87 S53E 98 TAM 97 N63E 190
- 2 T. J. BROWN, DEPUTY COUNTY SURVEYOR, USED CORNER IN SURVEYS RECORDED IN VOL 2 PAGE 53 IN NOV 1868 AND VOLUME 2 PAGE 140 IN JUNE 1876 AS A STONE TAM 8 S24E 114
- 3 J. MCCREARY, DEPUTY COUNTY SURVEYOR, USED CORNER IN A SURVEY RECORDED IN VOL 3 PAGE 211 IN OCT 1852 AS A STONE & BRICK IN SWAMP
- 4 E. R. MEECH, COUNTY SURVEYOR, USED CORNER IN A SURVEY RECORDED IN VOL 5 PAGE 44 IN SEPT 1903 AS A STONE ON SOUTH SIDE OF HIGHWAY IN DITCH
- 5 INGHAM COUNTY ROAD COMMISSION GRID MAP CALLS FOR CORNER AS A PIPE 14" MAPLE, 48 3' NW, 18" MAPLE, 35 5' NW, PIPE NORTH 33 0'
- 6 J. E. STEPHENS REG 16953, RECORDED CORNER UNDER ACT 74 IN LIBER 3 PAGE 243 IN OCT 1974 AS A FOUND RAILROAD SPIKE AT INTERSECTION ROAD CENTER LINES. NAIL & TAG NORTH SIDE UTIL POLE, S27 E, 55 08', NAIL & TAG SOUTH SIDE 36" MAPLE, 143 W, 42 32' NAIL & TAG SOUTH SIDE 36" MAPLE, N60 W, 57 00'

B. Description of corner evidence found and/or method applied in restoring or reestablishing corner

FIELD REVEALATION AT APPARENT LOCATION OF CORNER REVEALED A 3/4" IRON BAR IN A MONUMENT BOX AT THE CENTERLINE INTERSECTION OF HOLT AND GILBERT ROADS. TRAVERSE OF SECTION 19 REVEALED THAT FOUND MONUMENTATION DID NOT MCCREARY OR MEECH'S COUNTY SURVEYOR SURVEYS. SEARCHED FOR CORNER 15' WEST OF FOUND MONUMENTATION AND FOUND 3/4" PIPE BURIED 2' UNDER ROAD SURFACE. ACCEPTED FOUND MONUMENTATION AS PERPETUATION OF CORNER BASED ON AGREEMENT WITH COUNTY SURVEYOR SURVEYS AND SET 5/8" BAR IN PIPE AND SET MONUMENT BOX. MEASURED WEST 285 58' TO A-7 (MCCREARY MEASURED 287 1 66' MEECH MEASURED 287 1 67') MEASURED SOUTH 26 54 41' TO B-B (MCCREARY MEASURED 263 7 56')

C. Description of monument for corner and accessories established to perpetuate locating the position of the corner

1 1/2" X 1/2" X 1/2" IRON BAR WITH YELLOW PLASTIC CAP STAMPED KON ENGER 28469 IN 3/4" PIPE IN MONUMENT BOX
FOUND BAR & BOLT'S END TAG SE SIDE CORNER FENCE POST 163 E 72 32'
FOUND CORNER CALLS BAGIN 147 1 75 52'
FOUND BAR & TAG, 160 7 WEST SIDE UTIL POLE 533 E 62 08'
FOUND BAR IN NORTH SIDE UTIL POLE 115 E 40 00'

Surveyed by

David L. Clifford

DATE: MARCH 11, 2003

Copyright © Michigan State Surveyors Association 2003

PLEASE APPROVE BY THE REGISTER OF DEEDS TO RECORD THIS INSTRUMENT. IF YOU HAVE ANY QUESTIONS, PLEASE CALL THE REGISTER OF DEEDS AT 2003-019582
RECORDED MAY 14 1999
INGHAM COUNTY, MICHIGAN
REGISTER OF DEEDS



2003-019582

03/19/2003 09:41A

LAND CORNER RECORDATION CERTIFICATE

FILING REQUIREMENT OF ACT 74, MICH. P.A. 1970

SW corner, Section 17, T3N, R2W, Delhi Township,
Ingham County

LIBER 2ND TO 567

FOR CORNERS OF--	LOCATED IN--	CORNER CODE NUMBER
1. PUBLIC LAND SURVEY	T. 3 N. R. 2 W.	C-7
2. PROPERTY CONTROLLING IN SECTION	N. S. R. E. W.	
3. MISCELLANEOUS PROPERTY IN SECTION	N. S. R. E. W.	
4. LOT NO. _____	RECORDED PLAT _____	
5. PRIVATE CLAIMS _____		

FILED

Nov 29 9 56 AM '73

REGISTER OF DEEDS

Conrad M. Lewis
INGHAM COUNTY, MICH.

REGISTER OF DEEDS STAMP AND FILING NUMBER

I, James E. Stephens do hereby certify that under requirements of P.A. 74, Michigan P.A. of 1970 the corner points mentioned in lines 1 and 2 above (identified with circles on index code diagram—over) were, in a field survey on March 13, 1973, established, re-established, monumented, re-monumented, recovered or restored as expressed below and in conformance with regulations and rules therefore as required in the current manual of survey instructions of the United States Department of the Interior, Bureau of Land Management or by a decree of a court of law. Furthermore, that the corner points mentioned in lines 3, 4 and 5 above were, in a field survey on _____, 19____, found, recovered, restored, established or re-established as expressed below and in conformance with the rules of the Michigan State Board of Registration for Land Surveyors or, by a Decree of a Court of law:

A. Description of original monument and accessories and/or subsequent restoration:

The original monument and accessories were not found.

B. Description of corner evidence found and/or method applied in restoring or re-establishing corner:

A railroad spike was found in the centerline of the two section line roads (Holt Rd. and Grovenburg Rd.).

C. Description of monument for corner and accessories established to perpetuate locating the position of the corner:

The railroad spike found at the SW corner was left in position with the following witnesses:

Survey tag in North side of a utility pole, S42°51'W 75.25 feet.
Survey tag in the North side of a 30 inch Oak tree, S26°27'E 87.29 feet.
Survey tag in the South side of a telephone pole, N20°20'W 139.16 feet.
The bearing of the Section line North of the corner is N0°30'19"W.
The bearing of the Section line East of the corner is N89°19'41"E.

SIGNED BY James E. Stephens

DATE September 17, 1973

SURVEYOR'S MICHIGAN REGISTRATION NO. 16053

FOR STATE AND UNITED STATES AGENCIES:

SIGNED BY _____ CHIEF OF SURVEY PARTY

DATE _____

APPROVED AND SIGNED BY _____ MICHIGAN REGISTERED LAND SURVEYOR

DATE _____

SURVEYOR'S MICHIGAN REGISTRATION NO. _____

