

P.P. SW 75.32' P.P. SSW 89.68' T.P. NW 48.54' 30' Maple NNE 67.13' P.P. NW 57.91' Cor. hse. 4748 NNE 80.45' P.P. SE 55.84' NW cor. P.P. tower ESE 65.6'

20 Stone over 1-1/4" pipe on G
N. road on line fence E., 8
old fence S. (now trees)

21 Iron under flat rock
4" Elm E. 26.9'
10" Elm NW 41.8'
12" Elm NW 50.7'
10" Elm W. 107.7'
16" Elm SW 29.6'
15" Elm SE 40.6'
6" Berry ESE 33.3'

22 Iron stone, 8 brick
1" Maple NE 48.5'
15" Basswood SE 32.6'
Maple NE 71.1'
16" Elm N.W. 129.4'
18" Elm S.S.W. 88.5'
Anch. post NE 39.5'

23 1/2" Iron (I.C.R.C. 1964)
U.S.G.S. b.m. E. 34.18'
T.P. SSW 63.42'
Guy pole NW 43.73'

29 W. end bldg. on C.E. B.W.

28 Iron, stone, 8 brick
9" Elm NE 290'
8" Elm NNE 54.4'
12" Elm N.W. 65.2'
7" Elm SW 45.5'

27 Stone
20" Maple W. 31.7'
12" Walnut S. 130.7'

26 Boat spike (I.C.R.C. 1964)
20" Elm E. 37.08'
12" Elm W.N.W. 37.80'
P.P. W. 62.82'

32 R.R. spike (1966)
1/2" 16" Walnut SE 50.25'
20" Walnut SW 22.35'
24" Maple NW 23.95'

33 Stone, brick, crockery
9" Oak NW 41.0'
7" Oak E. 26.9'
5" Oak W. 54.4'

34 Stone on P
Anch. post W. 30.7'
Anch. post E. 30.6'

35 Boat spike (I.C.R.C. 1964)
30" Oak E.N.E. 39.40'
T.P. E. 79.57'
P.P. W. 42.05'

one brick
Elm W. 32.5'
Maple E.S.E. 78.0'
Walnut S.S.W. 84.0'

25 Iron, stone
Iron bar E. 33.0'
14" Elm SE 37.4'
Fence post W. 31.0'
8" Elm W.N.W. 45.6'
12" Maple NNE 56.0'

24 1" Pipe, marble mon., brick
16" Maple W.N.W. 23.0'
16" Maple SW 30.7'
NW cor. gas sta. NE 71.7'

R. spike (1966)
P. NE 78.62'
24" Cherry SE 41.46'
P. W.N.W. 22.45'
1/2" Maple NW 45.92'

30" Drive
Anch. post
36" Oak
16" Elm

Iron
G.S.

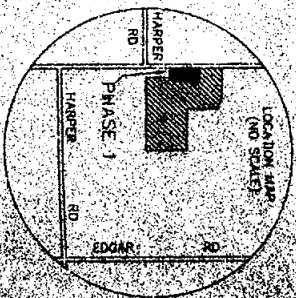
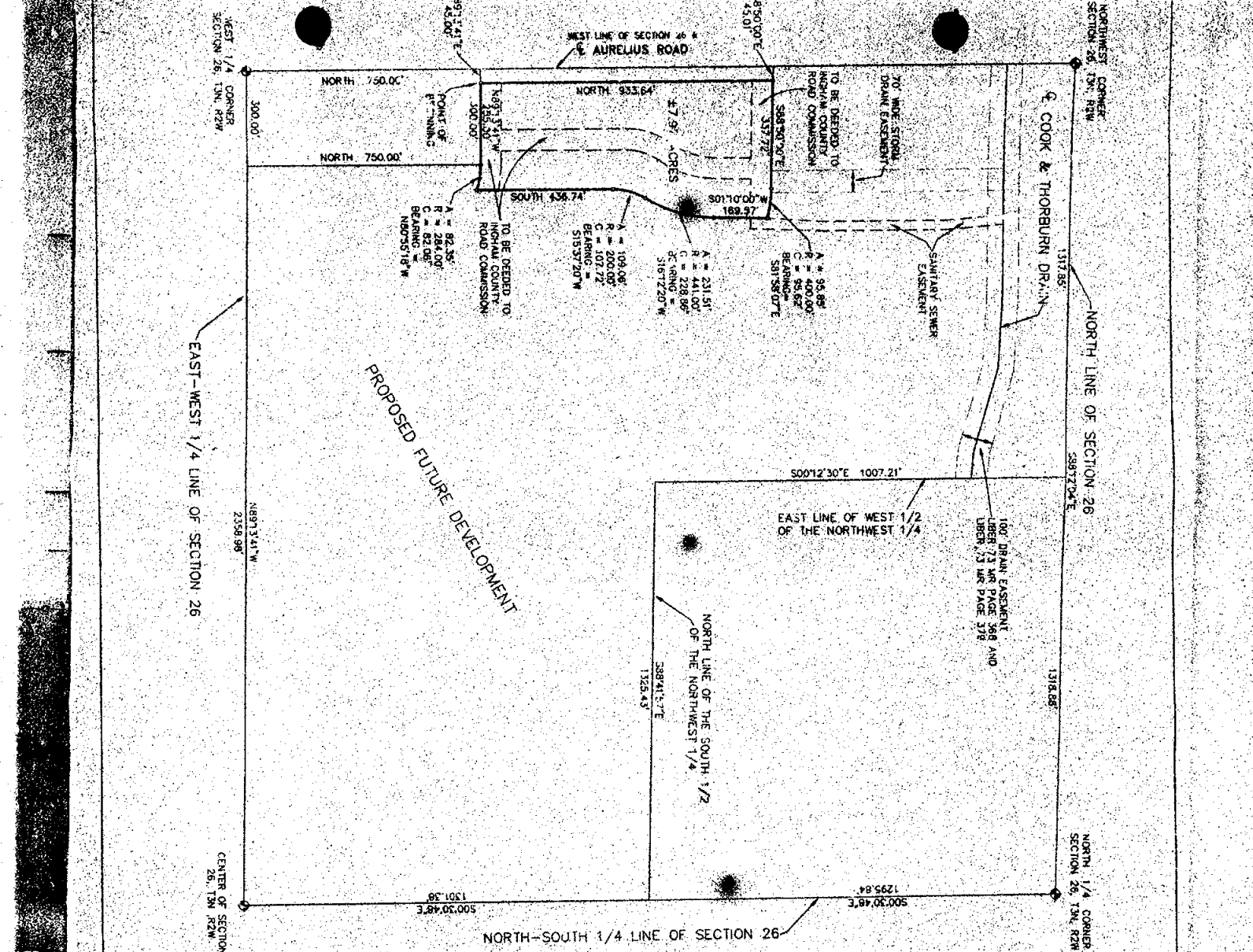
Iron, stone
1" Pipe, stone
Road sign NW 30.7'
9" Elm W.N.W. 100.5'
16" Elm N.N.W. 68.0'

R.R. spike, stone
1-1/4" Iron W. 33.0' in line
with E. fence S. of W. fence

R.R. spike (1966)
1/2" 16" Walnut SW 39.46'
30" Maple W.N.W. 33.87'
30" Cherry NW 42.56'
8" Maple SE 25.85'

1322.00' 1325.56' 2641.65' 2642.60' 2647.09' 2632.21' 2641.80'

Boat spike (I.C.R.C. 1964)
24" Elm E.S.E. 34.83'
P.P. W.S.W. 68.19'
12" Apple W.N.W. 73.30'



SURVEYOR'S CERTIFICATE

I, Marvin F. Foutly, Licensed Land Surveyor of the State of Michigan, hereby certify:

That the subdivision plan known as Ingham County Condominium Subdivision Plan No. 110, as shown on the accompanying drawings, represents a survey on the ground made under my direction, and that there are no existing encroachments upon the lands and property herein described.

That the required monuments, iron markers have been located in the ground as required by rules promulgated under Section 142 of Act No. 59 of the Public Acts of 1978.

That the accuracy of this survey is within the limits required by the rules promulgated under Section 142 of Act No. 59 of the Public Acts of 1978.

That the bearings, as shown, are noted on the survey plan as required by the rules promulgated under Section 142 of Act No. 59 of the Public Acts of 1978.

Date 4-25-95

Marvin F. Foutly
 Marvin F. Foutly
 P.C.
 Registration No. 18989
 160 E. Grand River Ave. Ste. A
 Williamston, MI 48895

BENCH MARK
 60' D NAIL IN POWER POLE ON EAST SIDE
 OF AURELIUS ROAD 170'± FROM NORTHWEST
 CORNER PHASE 1, ELEVATION 882.39

CONCRETE MONUMENTS SET AT ALL
 CORNERS MARKED "O"

SURVEY PLAN
CENTENNIAL FARMS

Marvin F. Foutly, P.C., 160 E. Grand River Avenue, Ste. A
 Williamston, Michigan 48895

PROPOSED APRIL 1, 1995

