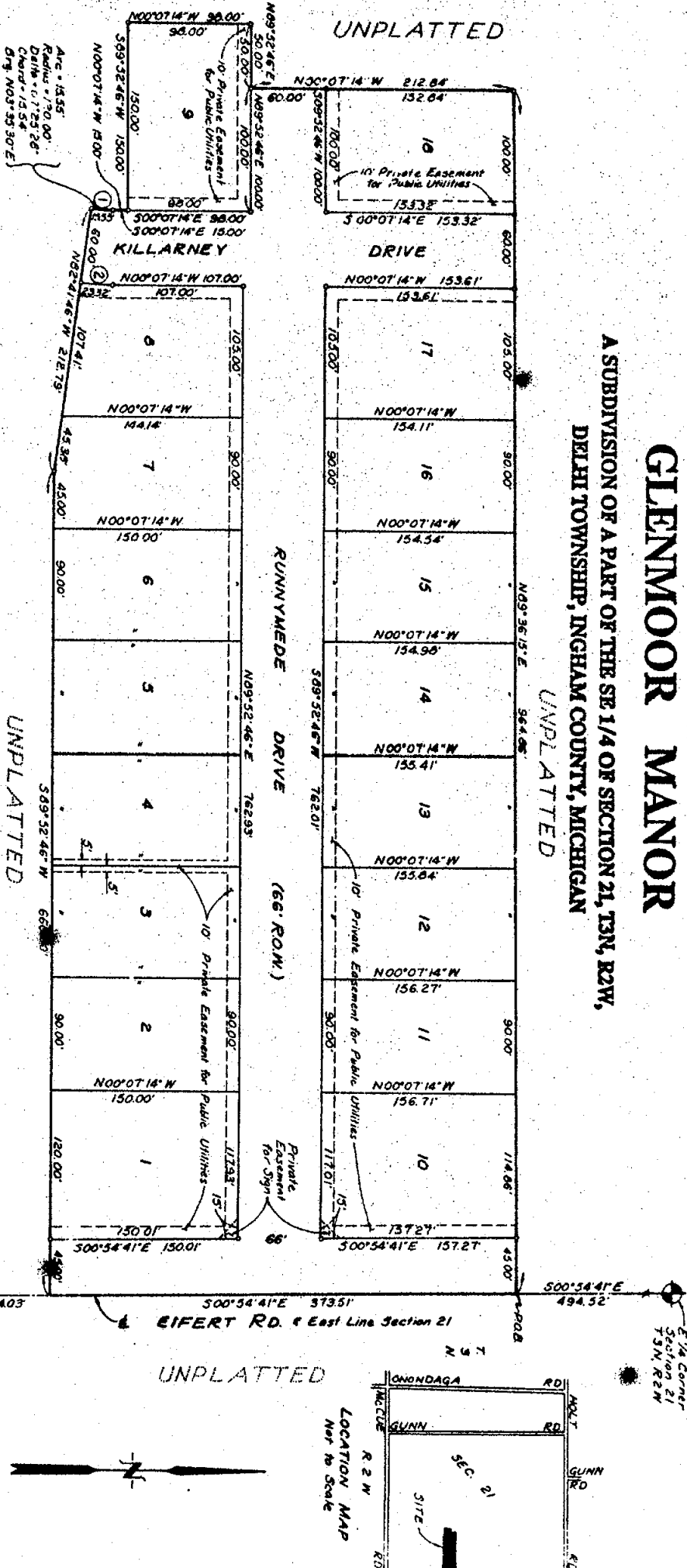


GLENMOOR MANOR

A SUBDIVISION OF A PART OF THE SE 1/4 OF SECTION 21, T3N, R2W,
DELMH TOWNSHIP, INGHAM COUNTY, MICHIGAN



NO	ARC	RADIUS	DELTA	CHORD	BEARING
1	15.55'	120.00'	0° 23' 28"	15.54'	N03°35'30"E
2	23.38'	120.00'	0° 23' 28"	23.37'	N03°35'30"E

LEGEND

- All dimensions are in feet.
- All curve dimensions are arc lengths.
- 4" Corner monuments 30" in length with 1/2" Juno bars have been placed at all points marked "C".
- Lot corners have been marked with 1/2" diameter round iron bars 18" long.
- Bearings were established from the recorded plat of Willow No. 4 as recorded in Liber 35 of Plats, Pages 36 & 37, Ingham County records.

SURVEYOR'S CERTIFICATE

I, Marvin F. Pouty, surveyor, certify,

That I have surveyed, divided and mapped the land shown on this plat, described as follows:

GLENMOOR MANOR a subdivision of a part of the SE 1/4 of Section 21, T3N, R2W, Delmh Township, Ingham County, Michigan; Beginning at a point on the East line of said Section 21, distant 500°54'41"E 494.52 feet from the East 1/4 corner of said Section 21, thence containing 500°54'41"E 373.51 feet along said East line; thence S89°52'46"W 660.00 feet; thence N62°41'46"W 212.79 feet; thence on a curve, concave to the west 15.55 feet, said curve having a radius of 120.00 feet, a central angle of 0° 23' 28" and a chord of 15.54 feet bearing N03°35'30"E; thence N00°07'14"W 150.00 feet; thence S89°52'46"W 150.00 feet; thence N00°07'14"W 88.00 feet; thence N89°52'46"E 50.00 feet; thence N00°07'14"W 212.84 feet; thence N89°52'15"E 964.46 feet to the point of beginning, containing 8,157 acres more or less and containing lots 1 through 18 inclusive.

That I have made such survey, land division and plat by the direction of the owners of such land.

That such plat is a correct representation of all exterior boundaries of the land surveyed and the subdivision of it.

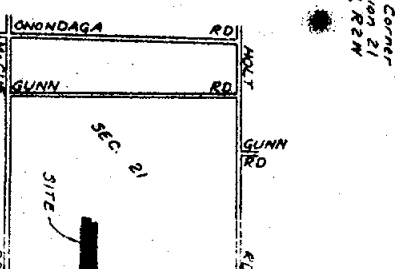
That the required monuments and iron markers have been located in the ground on that survey has been deposited with the municipality, as required by Section 125 of the Act.

That the accuracy of survey is within the limits required by Section 126 of the Act.

That the bearings shown on the plat are expressed as required by Section 126 (3) of the Act and explained in the legend.



LOCATION MAP



April 11, 1988

MARVIN F. POUTY, PC
1551 Hensley Road
P.O. Box 707
Hazel, Michigan 49840

Marvin F. Pouty, President
Licensed Surveyor No. 18889

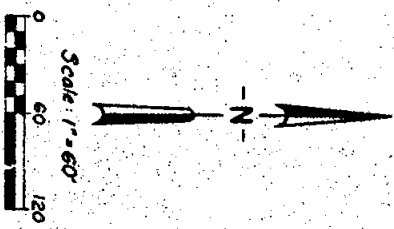


DATE: April 4, 1988

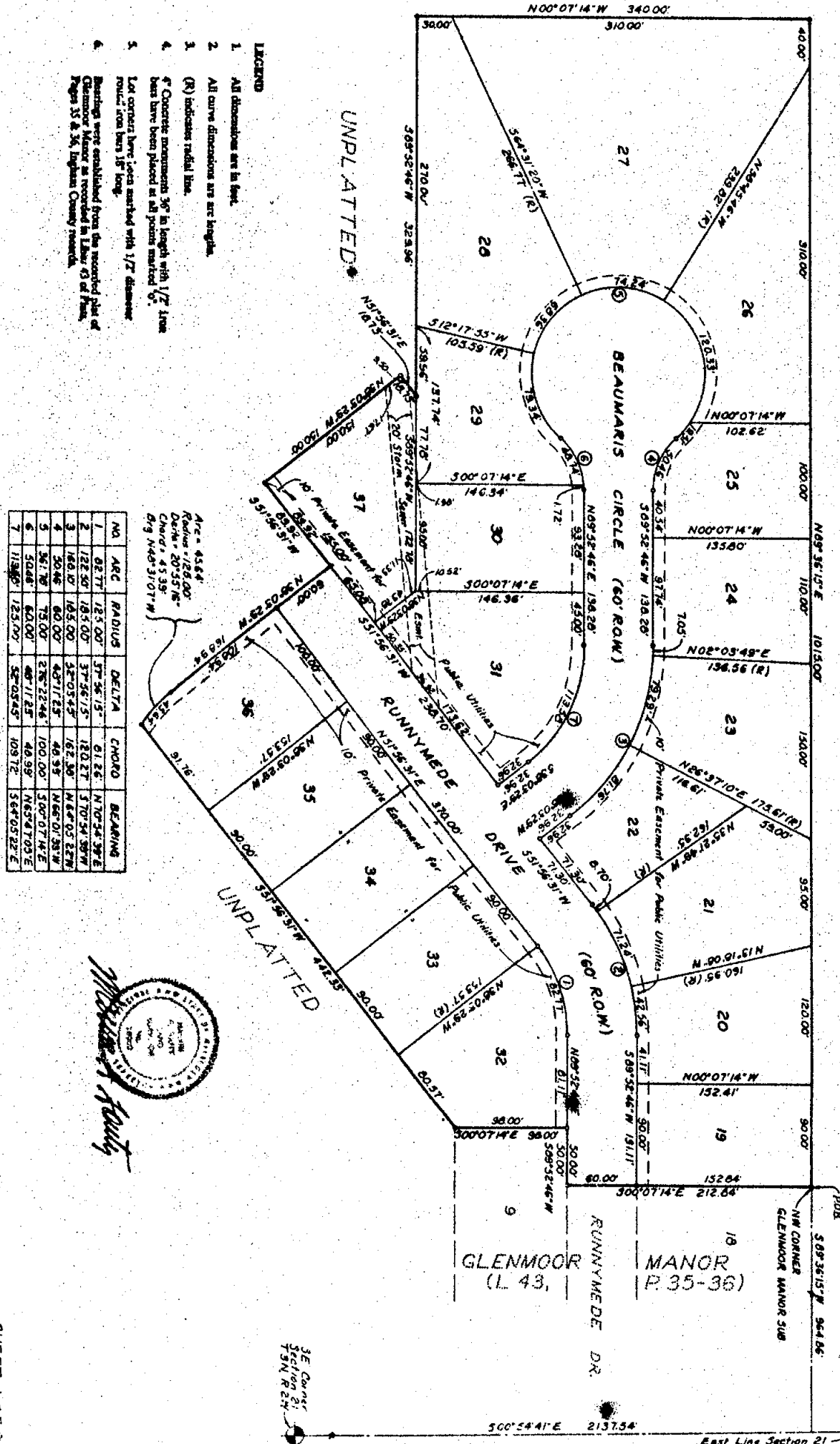
Witnessed and attested:
Richard E. Linn, Notary Public
Ingham County, Michigan

GLENMOOR MANOR NO. 2

A SUBDIVISION OF A PART OF THE SE 1/4 OF SECTION 21, 19N, R2W,
DELMONT TOWNSHIP, INGHAM COUNTY, MICHIGAN



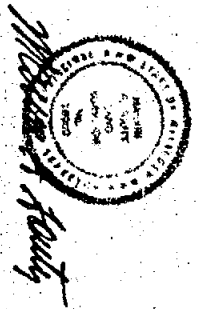
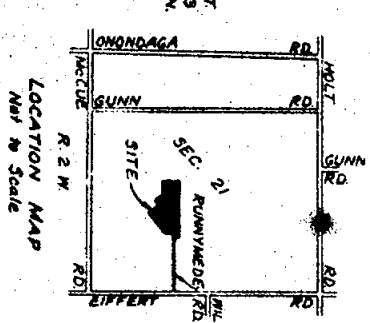
UNPLATTED



- LEGEND**
- All dimensions are in feet.
 - All curve dimensions are arc lengths.
 - (R) indicates radial line.
 - Concrete monuments 3/4" in length with 1/2" lines have been placed at all points marked 'C'.
 - Lot corners have been marked with 1/2" diameter round iron bars 18" long.
- Readings were established from the recorded plat of Glenmoor Manor as recorded in Liber 13 of Park, Pages 35 & 36, Ingham County records.

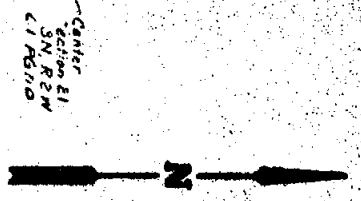
NO.	ARC	RADIUS	DELTA	CHORD	BEARING
1	82.77	125.00	37° 56' 15"	61.26	N 70° 54' 39" E
2	122.50	183.00	37° 56' 15"	120.27	S 70° 54' 39" W
3	168.10	255.00	37° 56' 15"	162.30	N 64° 05' 22" W
4	20.46	60.00	48° 17' 25"	46.30	N 66° 01' 33" W
5	36.78	75.00	67° 22' 44"	100.00	S 60° 07' 47" E
6	50.48	60.00	48° 17' 25"	46.39	N 65° 51' 03" E
7	119.87	125.00	37° 56' 15"	109.72	S 64° 05' 22" E

Arc = 45.64
 Radius = 125.00
 Delta = 20° 55' 18"
 Chord = 43.35
 Big N 48° 31' 07" W

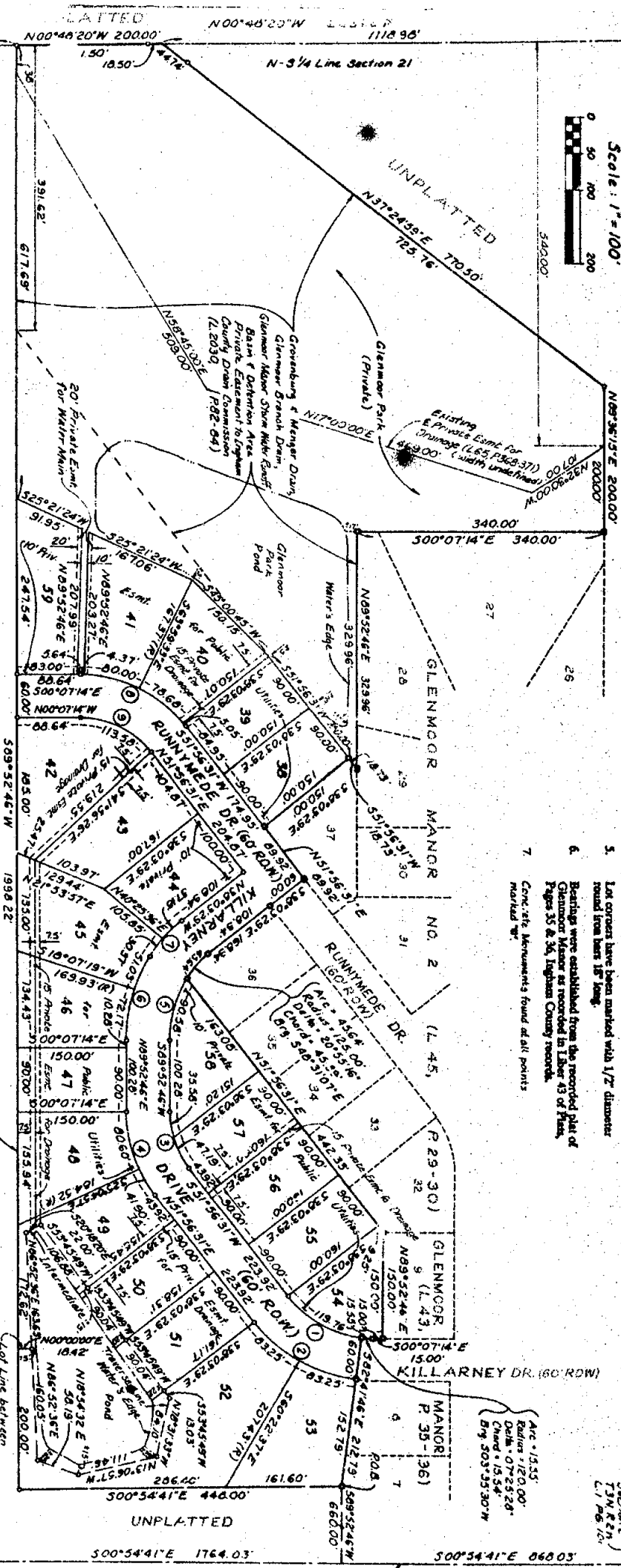


GLENMOOR MANOR NO. 3

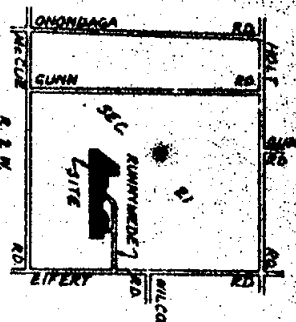
A subdivision of a part of the SE 1/4 of Sec. 21, T3N, R2W Delhi Township, Ingham County, Michigan



NO.	ARC	RADIUS	DELTA	CHORD	BEARING
1	119.76	153.72	44.3817°	116.75	S29.37.25°W
2	166.50	213.72	44.3817°	162.32	N29.37.25°E
3	68.71	125.00	37.5615°	81.26	S70.54.30°W
4	122.49	165.00	37.5615°	120.27	N70.54.30°E
5	50.96	66.66	37.08.29°	69.47	N14.43.00°W
6	123.20	226.66	37.08.29°	121.68	S74.33.00°E
7	67.57	195.00	20.53.16°	67.18	N40.31.07°W
8	164.10	195.00	20.53.16°	162.38	S20.54.30°W
9	119.50	125.00	52.03.45°	109.77	N23.44.35°E



- LEGEND**
- All dimensions are in feet.
 - All curve dimensions are arc lengths.
 - (R) indicates radial line.
 - † Curved dimensions 36' in length with 1/2" iron bars h. a been placed at all points marked 'o'.
 - Lot corners have been marked with 1/2" diameter round iron bars 18" long.
 - Bearings were established from the recorded plat of Glenmoor Manor as recorded in Liber 43 of Plans, Pages 35 & 36, Ingham County records.
 - Conc. etc. Measurements found at all points marked 'x'.



DESIGNED AND APPROVED

DATE: FEB 11 1993

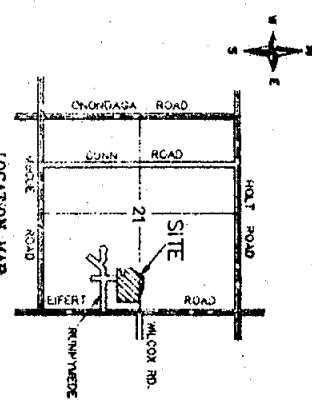
BY: [Signature]

FOR THE DEPARTMENT OF CONSERVATION

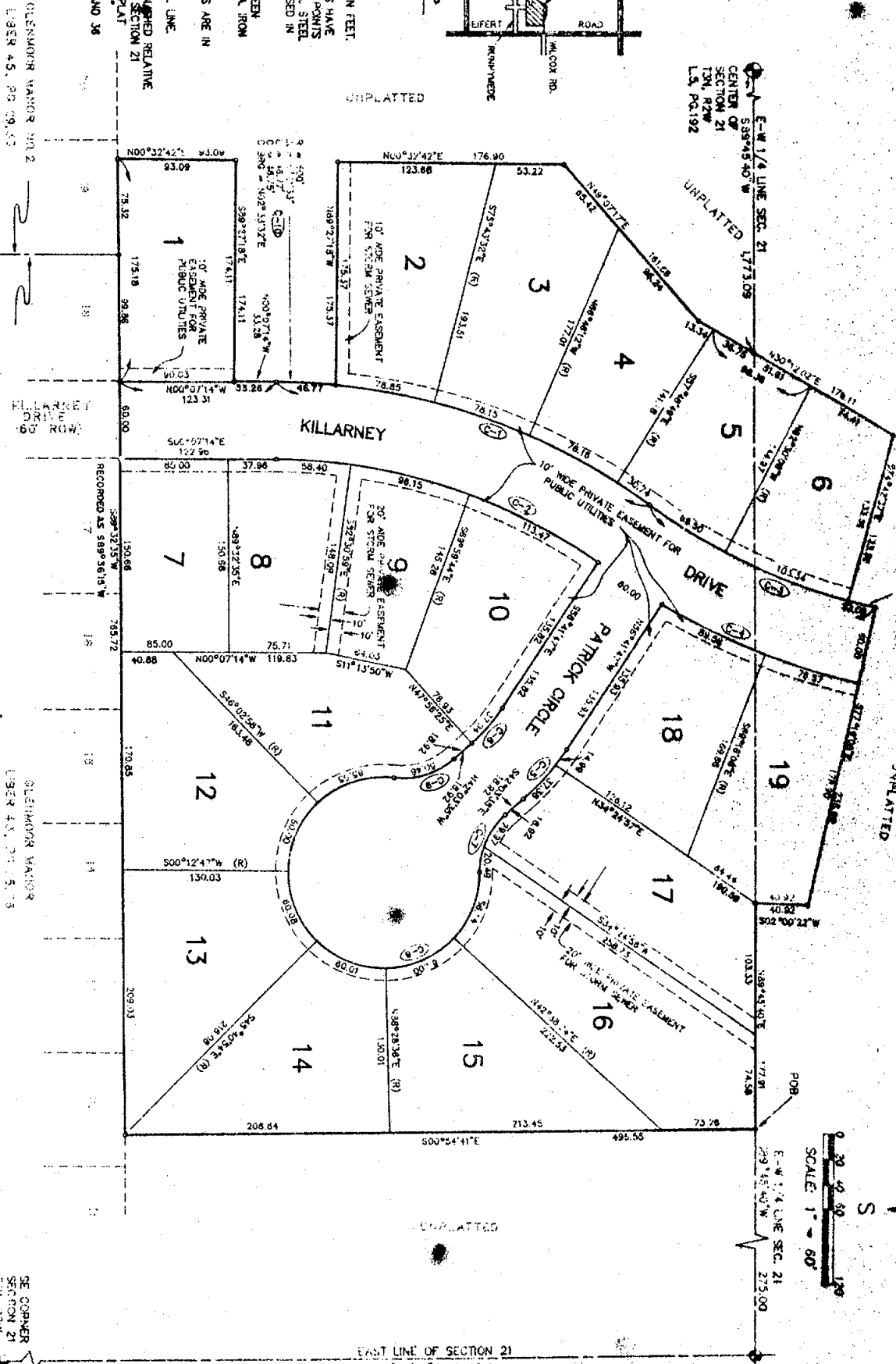
3/4 Cor. Section 21
T3N, R2W
L3 P25 245

DOLLING FARM ESTATES

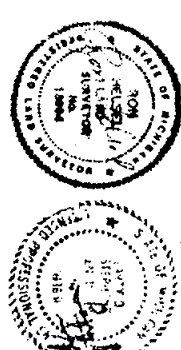
A PART OF THE EAST 1/2 OF SECTION 21, T34N, R24W, DEER TOWNSHIP, INGHAM COUNTY, MICHIGAN



- LEGEND**
1. ALL DIMENSIONS ARE IN FEET.
 2. CONCRETE MONUMENTS HAVE BEEN PLACED AT ALL POINTS MARKED "C" (1/2" DIA. STEEL BAR, 36" LONG, ENCASED IN 4" DIA. CONCRETE).
 3. LOT CORNERS HAVE BEEN MARKED WITH 1/2" DIA. IRON BARS 18" IN LENGTH.
 4. ALL CURVE DIMENSIONS ARE IN ARC LENGTHS.
 5. (R) DENOTES A RADIAL LINE.
 6. BEARINGS WERE ESTABLISHED RELATIVE TO THE EAST LINE OF SECTION 21 FROM THE RECORDED PLAT OF "GENNOR MANOR" LIBER 43, PAGES 35 AND 36



CURVE	RADIUS	LENGTH	BEARING	CHORD	BEARING	DELTA
C-1	500.00	112.87	S 1° 47' 35" W	507.50	S 3° 49' 44" W	33° 02' 09"
C-2	440.00	24.92	S 1° 47' 35" W	465.37	S 4° 54' 04" W	32° 06' 29"
C-3	85.00	14.32	S 1° 47' 35" W	86.99	S 3° 51' 55" W	32° 04' 54"
C-4	545.00	12.37	S 1° 47' 35" W	557.33	S 4° 54' 04" W	32° 06' 29"
C-5	305.00	22.37	S 1° 47' 35" W	317.37	S 3° 51' 55" W	32° 04' 54"
C-6	145.00	42.74	S 1° 47' 35" W	155.82	S 4° 54' 04" W	32° 06' 29"
C-7	63.00	11.64	S 1° 47' 35" W	64.95	S 3° 51' 55" W	32° 04' 54"
C-8	52.00	10.78	S 1° 47' 35" W	53.73	S 3° 51' 55" W	32° 04' 54"
C-9	60.00	50.48	S 1° 47' 35" W	60.48	S 1° 47' 35" W	0° 00' 00"
C-10	500.00	46.77	S 1° 47' 35" W	500.00	S 1° 47' 35" W	0° 00' 00"
C-11	485.00	22.08	S 1° 47' 35" W	485.00	S 1° 47' 35" W	0° 00' 00"



SE CORNER SECTION 21 T34N, R24W L1, PG.223

GENNOR MANOR NO. 2 LIBER 43, PG. 35, 36

GENNOR MANOR LIBER 43, PG. 35, 36

CLAIMED AND APPROVED
DATE June 21, 1993
BY THE DEPARTMENT OF COMMERCIAL
AND CONSUMER SERVICES

Notary E. Linnell, J.D.
Notary - Michigan