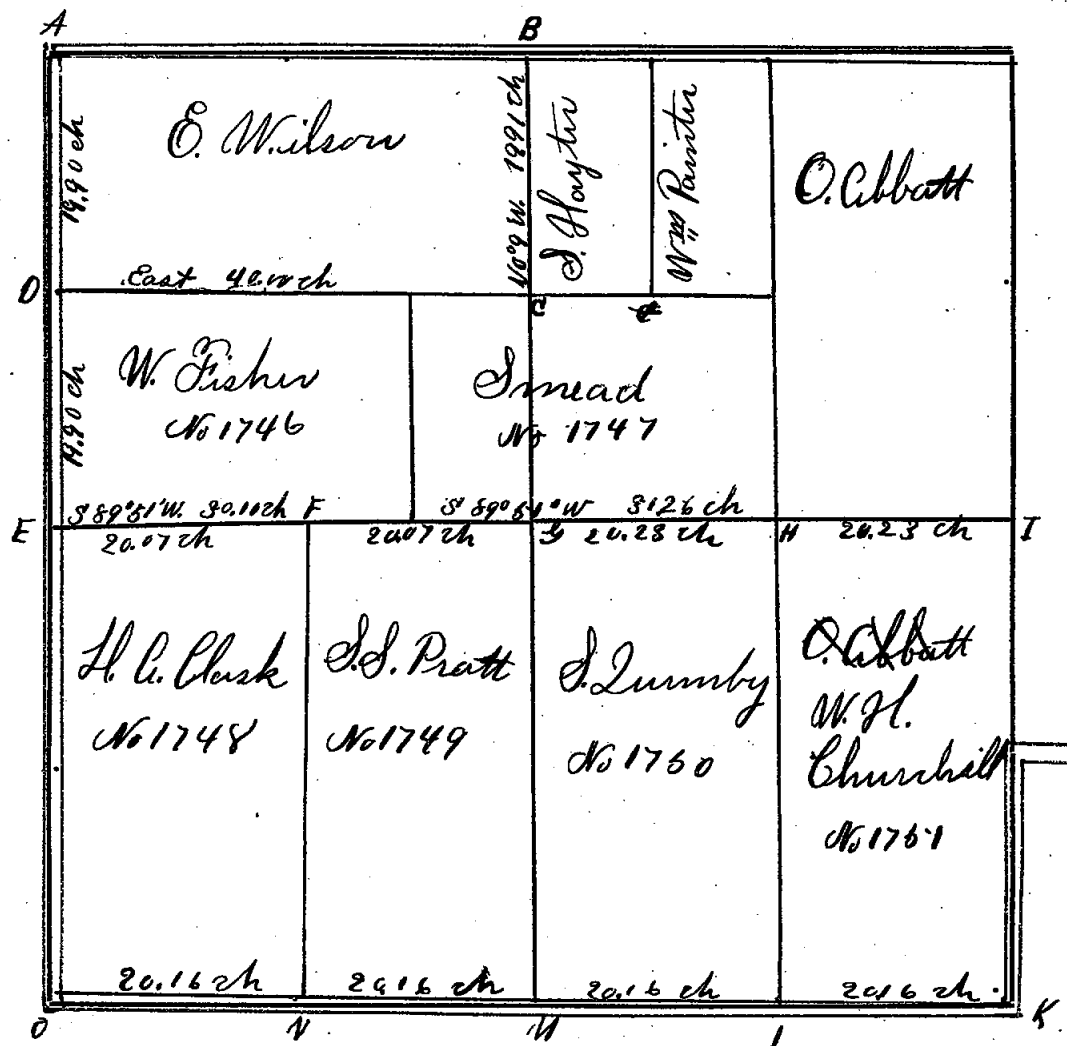




*My plan*

Dec 29<sup>th</sup> R. 24. Dec 29<sup>th</sup>



Station	Corner.	Timber.	Bearing.	Links.	Station	Corner.	Timber.	Bearing.	Links.
A	Stone	Maple	S 38 W	167 1/2	O	Stone	Cypress	N 50 1/2 E	127
B	"	to be set			"	"	White	N 44 W	40
C	Post	"	"	"					
D	Stone	B. Walnut	S 22 1/2 E	75					
E	"	Cherry	N 88 W	48					
F	Post	no tree							
G	"	"							
H	"	"							
I	"	"							
K	Stone	B. Cherry	S 22 1/2 E	113 1/4					
L	"	W. O	S 58 1/2 W	123					
M	"								
N	Stone								

A. P. Drake County Surveyor.

Var. 1 deg. 20 min. 0

Liber 3 Page 154

Surveyed Dec 7<sup>th</sup> & 8<sup>th</sup> & 9<sup>th</sup> 1880  
 Reversed Dec 20 1881

SOURCE: G.L.O. MAP Sh. 4

TRANSCRIBED from ~~DELETED~~ on file at REMON. OFFICE  
DUPLICATE

SURVEYOR'S NAME \_\_\_\_\_ SURVEYOR NO. \_\_\_\_\_

DATE OF SURVEY \_\_\_\_\_ SECTION NO. 19, 20, 29, 30

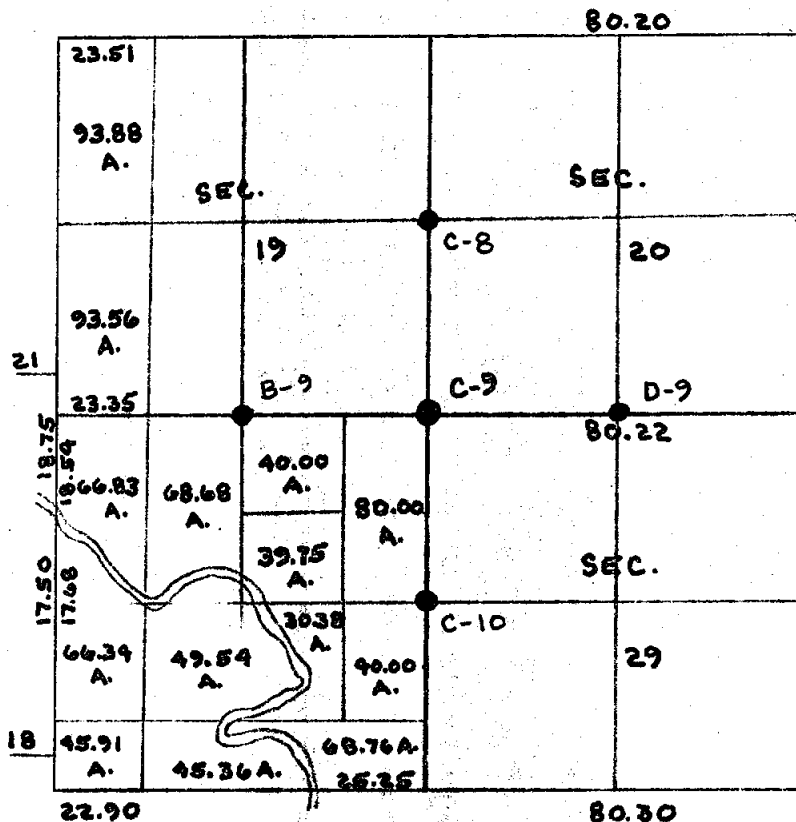
MAGNETIC VARIATION 4°25'E.

NOTE: Distances between section corners and section  $\frac{1}{4}$  corners are assumed to be 40.00 chs. unless a written distance is indicated.

Distances between  $\frac{1}{8}$  corner and either a section corner or a section  $\frac{1}{4}$  corner are assumed to be 20.00 chs. unless a written distance is indicated.

Distances to section centers can not be assumed and will not be shown since section centers were not set at this time.

Offsets if given will be indicated by a line perpendicular to the township line with a written distance above or below the line. Offsets will never be assumed and will come hand transcribed directly from our copies of the G.L.O. maps.

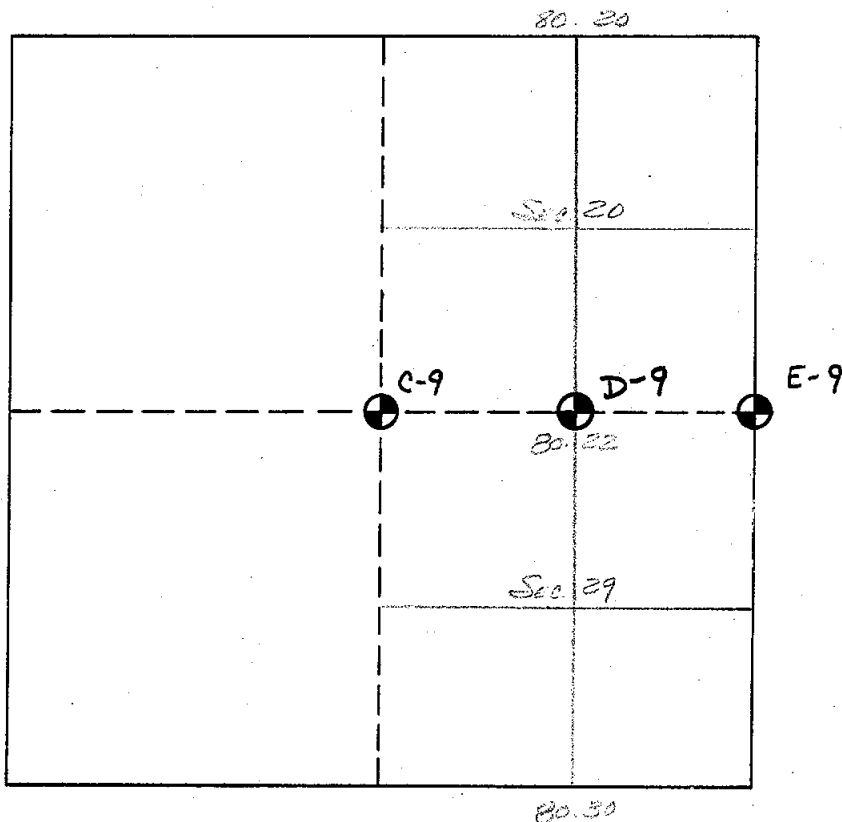


*Sec 29  
30*

SOURCE: G.L.O. MAP #4  
 TRANSCRIBED from ~~ORIGINAL~~ on file at REGION. OFFICE  
 DUPLICATE  
 SURVEYOR'S NAME EVANS SURVEYOR NO. \_\_\_\_\_  
 DATE OF SURVEY 1/18/27 SECTION NO. 20-29  
 MAGNETIC VARIATION 9°25'E

WRITTEN DISTANCE GIVEN BETWEEN C-9 AND E-9 = 80.22 CH.

ASSUMED DISTANCE BETWEEN C-9 AND D-9 = 40.11 CHS  
 " " " D-9 AND E-9 = 40.11 CHS



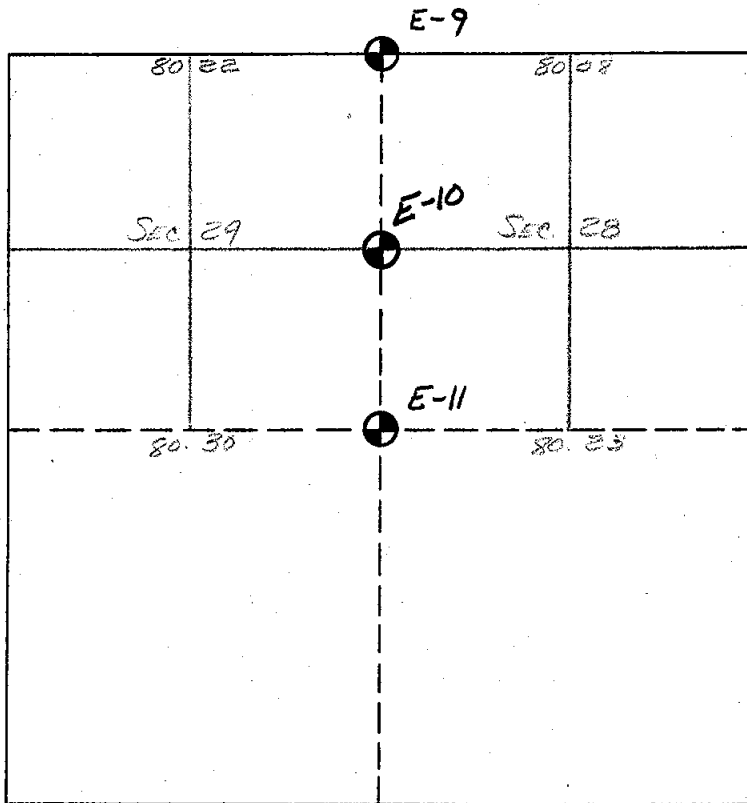
DELHI T 3 N, R 2 E W D-9 4 P. 1 of 1  
 TOWNSHIP CORNER CODE ATTACHMENT NO.

MC 29

SOURCE: G.L.O. MAP #4  
 TRANSCRIBED from ~~ORIGINAL~~ on file at REMON. OFFICE  
 DUPLICATE  
 SURVEYOR'S NAME EVANS SURVEYOR NO. \_\_\_\_\_  
 DATE OF SURVEY 1/1827 SECTION NO. 28, 29  
 MAGNETIC VARIATION 4° 25' E

ASSUMED DISTANCE BETWEEN E-9 AND E-10 = 40.00 CHAINS  
 " " " " E-10 AND E-11 = 40.00 CHAINS

NO WRITTEN DISTANCE GIVEN



  
 NOT TO  
 SCALE

DELHI T3 N, R2 W E-10 P. 1 of 1  
 TOWNSHIP CORNER CODE ATTACHMENT NO.

sec 29