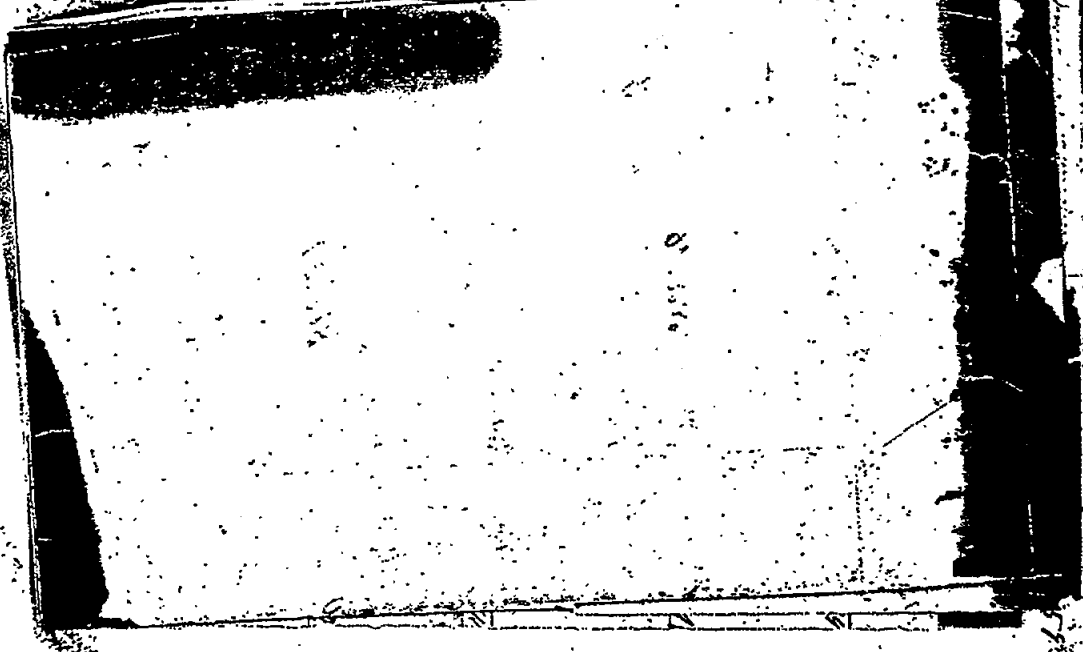


Certificates

The pursuance of a Contract with, and instructions from, Edmund Tiffin Surveyor General of the United States, and conformably to the laws of the United States; do here Survey and subdivide into sections Township No. 2 North of Range No. 1 East, in the Detroit Land District in Michigan Territory and certify that the foregoing are correct field notes of the Survey of the said Township.

Certified this 18th day of Feb^r 1826

J. Mansfield Deputy Surveyor



60
 Index Map of S. J. R. 16
 The figures on the lines refer to the pages

1770	Meridian line										1850
11	12	13	14	15	16	17	18	19	20	21	22
6	5	4	3	2	1	18	17	16	15	14	13
5	4	3	2	1	18	17	16	15	14	13	12
7	8	9	10	11	12	13	14	15	16	17	18
5	4	3	2	1	18	17	16	15	14	13	12
18	17	16	15	14	13	12	11	10	9	8	7
5	4	3	2	1	18	17	16	15	14	13	12
19	20	21	22	23	24	25	26	27	28	29	30
5	4	3	2	1	18	17	16	15	14	13	12
30	29	28	27	26	25	24	23	22	21	20	19
31	32	33	34	35	36	37	38	39	40	41	42
5	4	3	2	1	18	17	16	15	14	13	12

Reminders of Lake

Page 53-56

53.36 Re 32
 61.15 " 17
 61.50 Run 5 low Co B
 82.00 Ash 40 stand for Car 5672-8.

E. on (D) 575
 24.50 on brushy trim
 34.50 Re " "
 40.00 per term gwp
 57.00 on brushy trim
 58.50 Re " "
 73.00 on " " MWS
 79.00 Re " "
 80.28 on 40 S line 4 low S gwp

W C 578
 40.13 on gwp or road gwp

Dec 6 S 29. N 10
 " 5 N 14 W 8 1/2
 80.26 to side car

N line 576

0.62 Re. 21
 22.92 on 44
 40.00 on gwp line
 Dec 12 N 18 E 10
 Aug 10 S 64 W 9
 44.00 on 17
 58.63 Re 11
 87.37 on N on 32 low M gwp
 on bar with. Car 9 5-6 low
 Dec 16 S 31 E 28
 Sep 9 S 33 W 31

W Dec 30 - 31

24.42 AD 9

33.20 Bur Mur arr p flu

32.66

Dec 12. 879 B 23
with phone 35735
W 4 53 B 84
with 6N4W 234

W Dec 29 - 30

31.35 Bur Mur arr p flu

Jan 18 826 B 93

AD 20 130 B 47

W Dec 18 - 19

6.76 NO 32

21.19 " 14

30.45 Bur Mur 17.68 A-8 p

arr part with Bur p 18419 flu

NO 16 878 B 29

NO 26 162 B 71

W Dec 7 - 18

15.47 Blu 40

29.14 Bur Mur arr p flu

Re 18 159 B 25

In 8 822 B 27

W Dec 6 - 7

4.12 In 32

26.15 " 14

27.67 Bur Mur arr p flu

Dec 14 842 B 25

Mar 7 A-B 46

Members of part for sale in Dec 338
34 Requiring 210 p 24.80 each from them