

TRAV PT #20 SET PK NAIL E. EDGE BIT  
±90' W. OF WESTBOUND HOWELL ROAD

NW CORNER SECTION 5 T2N, R1E

FOUND ½" BAR 2.3' W OF W. EDGE BIT, & HOWELL ROAD

FOUND NBT W. SIDE 40" OAK 145.30 N20°E

S. EDGE STOP SIGN POST 65.72 N80°E

SET NBT #28414 SE SIDE POWER POLE 95.44 S20W

FOUND NBT #28409 N. SIDE 18" POPLAR 28.88 S8C

C-13 TANK RIE EAST 211'

COS 5 T2N, R1E

FOUND ½" BARRICADE #17022 IN E-W-S FENCE CORNER

SET NBT #28414 N. SIDE 15" CHERRY WEST 39.50

SET NBT #28414 W. SIDE 27" MAPLE SOUTH 10.56

SET NBT #28414 S. SIDE 6" MAPLE EAST 6.82

FOUND NBT #18998 E. SIDE 42" OAK NORTH 189.85'

SW CORNER SECTION 5 T2N, R1E

FOUND ½" PIPE & CAP #11370 IN MON BOOK INTERSEC

FOUND NBT #11370 N. SIDE POWER POLE WEST 473.1

FOUND NBT #18998 W. SIDE 27" MAPLE N20°W 141.52

TOP CENTER PHONE PEDESTAL N46°E 43.35

SET NBT #28414 N. SIDE 8' TRIPLE ELM S50°E 83.88

10/

S 1/4 CORNER SECTION 8 T2N, R1E			
FOUND 1/2" ROD & ROAD			
FOUND NWT #18998 NE SIDE 12" MAPLE N25E 2655			
FOUND NWT #18998 S SIDE 12" MAPLE S20E 1665			
FOUND NWT #18998 S SIDE 12" MAPLE S80W 6206			
FOUND NWT #18998 E SIDE POWER POLE N80W 12384			
SW CORNER SECTION 8 T2N, R1E			
FOUND 1/2" PIPE IN MANHOLE			
FOUND NWT #11370 S SIDE POWER POLE WEST 2650			
E N. END CULVERT N350W 38105			
SET NWT #28444 S SIDE 8" HICKORY N75W 67.50			
SET NWT #28444 S SIDE 12" HICKORY N85W 103.66			
S 1/4 CORNER SECTION 9 T2N, R1E			
SAME AS LG-P70			
8" HAWTHORN, 10" OAKS, 15" BASSWOOD			
NEW TREE SIZES			
COS 8 T2N, R1E			
FOUND 1/2" BAR 16.5 S. OF FENCE TO WEST			
Q. OF FENCE TO SOUTH			
SET NWT #28444 W. SIDE 8" MAPLE NORTH 60.90			
SET NWT #28444 N. SIDE 15" MAPLE EAST 7.26			
SET NWT #28444 NE SIDE 6" MAPLE S45E 8.84			
SET NWT #28444 W SIDE 8" MAPLE SOUTH 8.87			

# SECTION CORNER RECOVERY SHEET

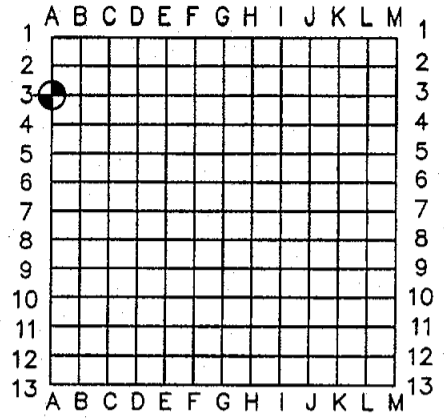
INGHAM COUNTY

INGHAM TOWNSHIP

T.2N., R.1E.

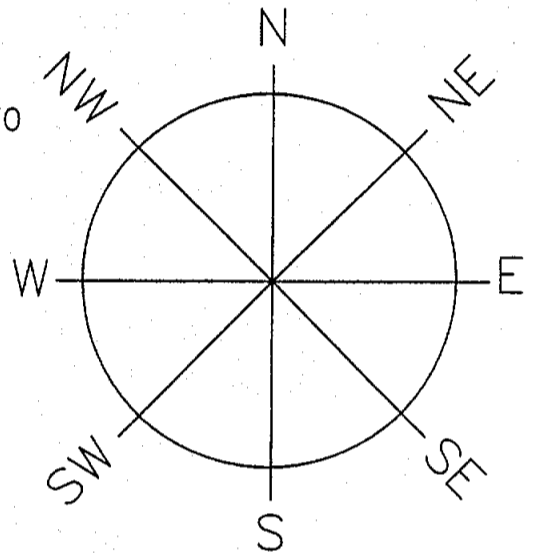
SECTION: 6,7

CORNER CODE: A-3



LCRC USED IN RECOVERY: LIBER 4, PAGE 17

MONUMENT CALLED FOR: 1/2" PIPE AND CAP #11370



MONUMENT FOUND: SAME

WITNESSES:

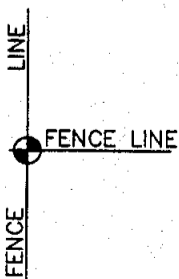
1. 3" DIAMETER STEEL FENCE POST, EAST, 1.25'.
2. FOUND NAIL AND TAG IN 30" STUMP, NORTH, 20.08'.
3. FOUND NAIL AND TAG IN 29" WALNUT, S35°W, 132.00'.



LOCATION SKETCH

GPS VISIBILITY NOTES

POOR



**KEBS, INC.** KYES ENGINEERING  
BRYAN LAND SURVEYS

2116 HASLETT ROAD, HASLETT, MI 48840  
PH. 517-339-1014 FAX. 517-339-8047

Charlotte Office  
Ph. 517-543-7076
Marshall Office  
Ph. 269-781-9800

# SECTION CORNER RECOVERY SHEET

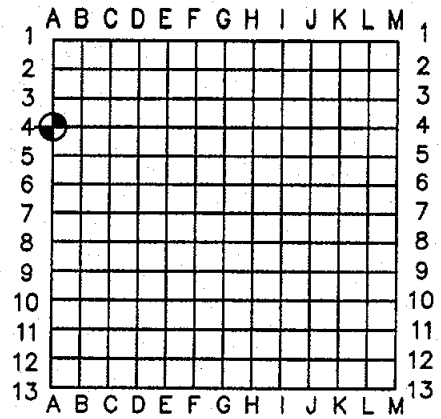
INGHAM COUNTY

INGHAM TOWNSHIP

T.2N., R.1E.

SECTION: 7

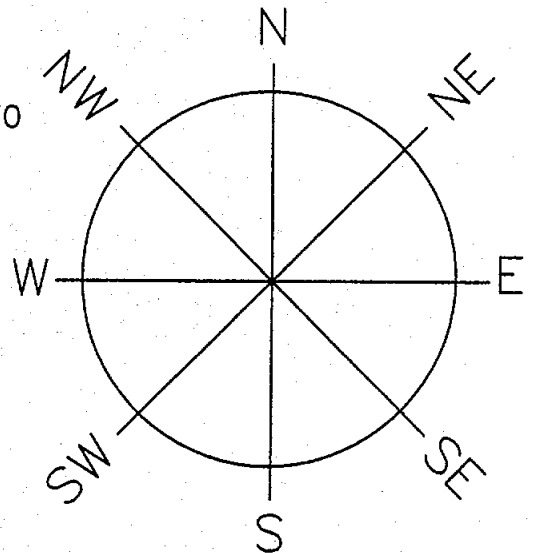
CORNER CODE: A-4



LCRC USED IN RECOVERY: LIBER 4, PAGE 71

MONUMENT CALLED FOR: 1/2" PIPE AND CAP #11370

MONUMENT FOUND: SAME



WITNESSES:

1. SET NAIL AND TAG IN NORTHWEST SIDE OF POWER POLE, S40°W, 60.20'.
2. SET NAIL AND TAG IN SOUTH SIDE OF 36" OAK, EAST, 12.34'.
3. SET NAIL AND TAG IN NORTHWEST SIDE OF 28" OAK, N40°E, 18.84'.



LOCATION SKETCH

GPS VISIBILITY NOTES

GOOD



**KEBS, INC.**

**KYES ENGINEERING  
BRYAN LAND SURVEYS**

2116 HASLETT ROAD, HASLETT, MI 48840  
PH. 517-339-1014 FAX. 517-339-8047

Charlotte Office  
Ph. 517-543-7076

Marshall Office  
Ph. 269-781-9800

# SECTION CORNER RECOVERY SHEET

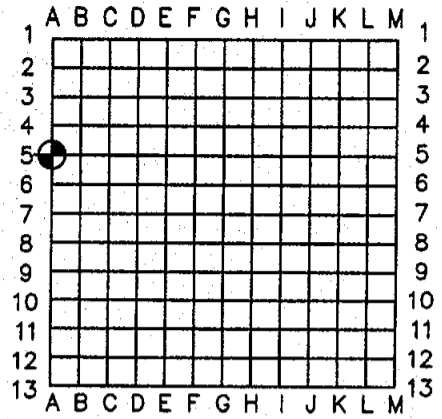
INGHAM COUNTY

INGHAM TOWNSHIP

T.2N., R.1E.

SECTION: 7,18

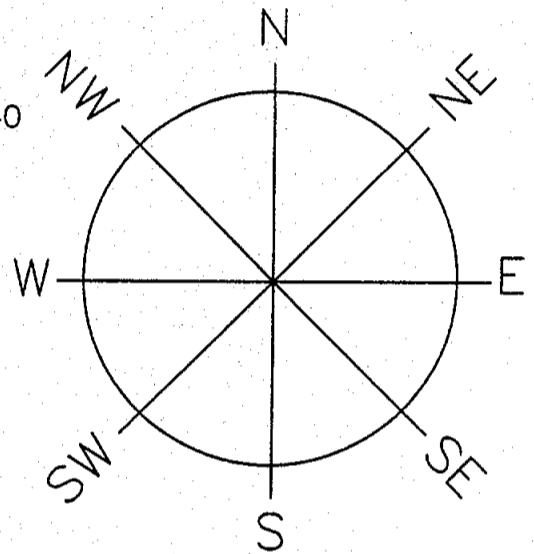
CORNER CODE: A-5



LCRC USED IN RECOVERY: LIBER 4, PAGE 96

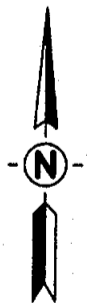
MONUMENT CALLED FOR: 1/2" BAR AND CAP #17640

MONUMENT FOUND: 1/2" BAR



WITNESSES:

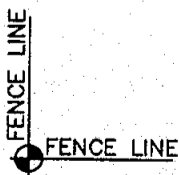
1. FOUND NAIL AND TAG #28414 IN SOUTHWEST SIDE OF 22" OAK, NORTH, 5.38'.
2. FOUND NAIL AND TAG #28414 IN SOUTH SIDE OF 20" OAK, N40°E, 8.07'.
3. FOUND NAIL AND TAG #28414 IN WEST SIDE OF 24" OAK, SOUTH, 6.39'.



LOCATION SKETCH

GPS VISIBILITY NOTES

GOOD



**KEBS, INC.**

**KYES ENGINEERING  
BRYAN LAND SURVEYS**

2116 HASLETT ROAD, HASLETT, MI 48840  
PH. 517-339-1014 FAX. 517-339-8047

Charlotte Office  
Ph. 517-543-7076

Marshall Office  
Ph. 269-781-9800

# SECTION CORNER RECOVERY SHEET

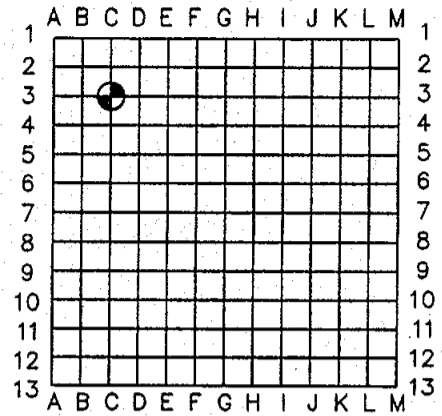
INGHAM COUNTY

INGHAM TOWNSHIP

T.2N., R.1E.

SECTION: 5,6,7,8

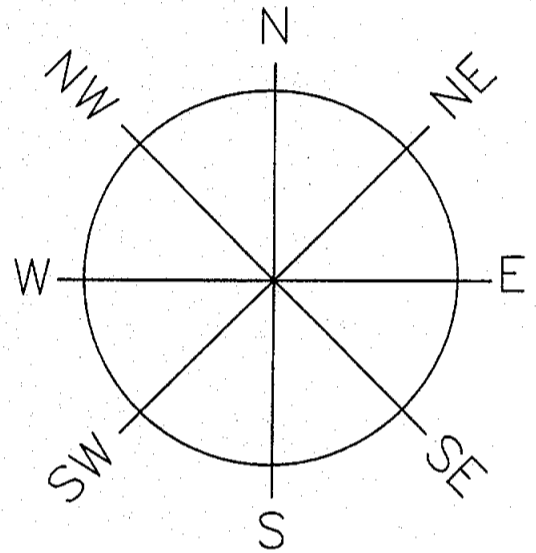
CORNER CODE: C-3



LCRC USED IN RECOVERY: LIBER 4, PAGE 19

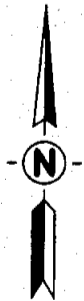
MONUMENT CALLED FOR: 1/2" PIPE IN MON. BOX

MONUMENT FOUND: SAME



WITNESSES:

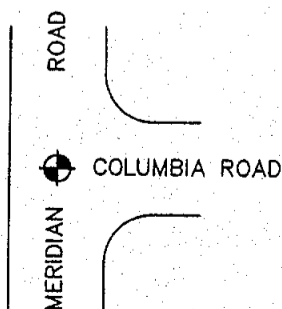
1. FOUND NAIL AND TAG IN POWER POLE, WEST, 47.31'.
2. FOUND NAIL AND TAG IN POWER POLE, N46'E, 43.96'.
3. CENTER OF 2" DIAMETER ROAD SIGN POST, S38'E, 46.13'.



LOCATION SKETCH

GPS VISIBILITY NOTES

GOOD



**KEBS, INC.** KYES ENGINEERING  
BRYAN LAND SURVEYS

2116 HASLETT ROAD, HASLETT, MI 48840  
PH. 517-339-1014 FAX. 517-339-8047

Charlotte Office  
Ph. 517-543-7076

Marshall Office  
Ph. 269-781-9800

# SECTION CORNER RECOVERY SHEET

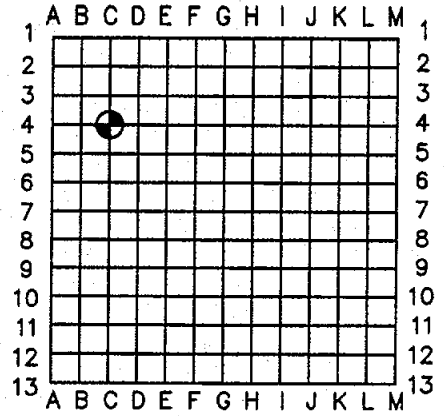
INGHAM COUNTY

INGHAM TOWNSHIP

T.2N., R.1E.

SECTION: 7,8

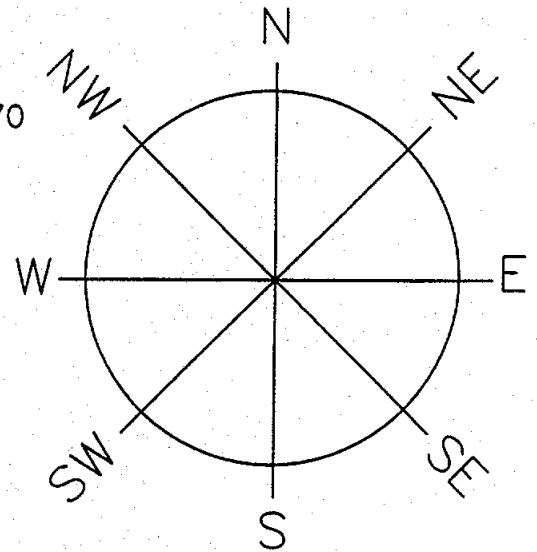
CORNER CODE: C-4



LCRC USED IN RECOVERY: LIBER 4, PAGE 21

MONUMENT CALLED FOR: 1/2" PIPE AND CAP #11370

MONUMENT FOUND: SAME



WITNESSES:

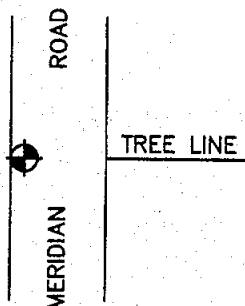
1. SET NAIL AND TAG IN SOUTH SIDE OF FENCE CORNER POST, S89°E, 41.84'.
2. SET NAIL AND TAG IN SOUTHWEST SIDE OF 6" ASH, S50°E, 73.73'.
3. SET NAIL AND TAG ABOVE NAIL AND TAG #11370 IN NORTHEAST SIDE OF POWER POLE, N22°W, 28.35'.



LOCATION SKETCH

GPS VISIBILITY NOTES

GOOD



**KEBS, INC.** KYES ENGINEERING  
BRYAN LAND SURVEYS

2116 HASLETT ROAD, HASLETT, MI 48840  
PH. 517-339-1014 FAX. 517-339-8047

Charlotte Office  
Ph. 517-543-7076

Marshall Office  
Ph. 269-781-9800

# SECTION CORNER RECOVERY SHEET

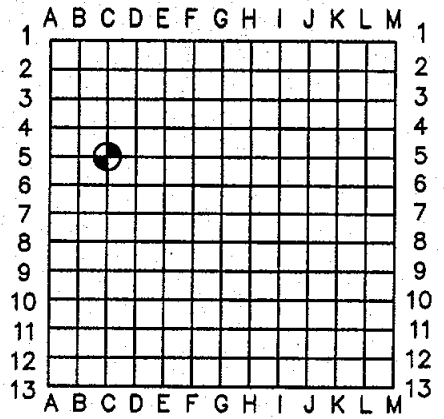
INGHAM COUNTY

INGHAM TOWNSHIP

T.2N., R.1E.

SECTION: 7,8,18,17

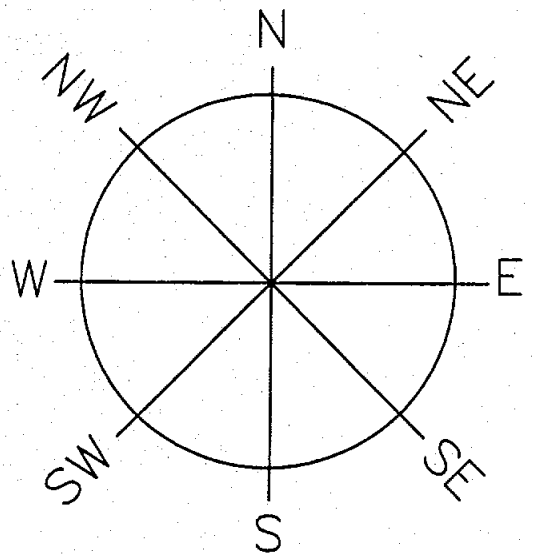
CORNER CODE: C-5



LCRC USED IN RECOVERY: LIBER 4, PAGE 20

MONUMENT CALLED FOR: 1/2" IRON PIPE

MONUMENT FOUND: SAME



WITNESSES:

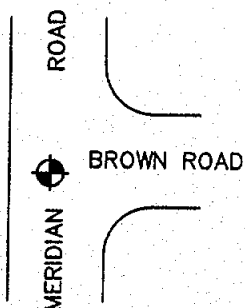
1. SET NAIL AND TAG IN SOUTH SIDE OF FENCE CORNER POST, N45°E, 50.08'.
2. FOUND NAIL AND TAG #11370 IN SOUTH SIDE OF POWER POLE, WEST, 26.43'.
3. FOUND NAIL AND TAG #28414 IN SOUTH SIDE OF 14" BASSWOOD, N80°E, 103.75'.



LOCATION SKETCH

GPS VISIBILITY NOTES

GOOD



**KEBS, INC.** KYES ENGINEERING  
BRYAN LAND SURVEYS

2116 HASLETT ROAD, HASLETT, MI 48840  
PH. 517-339-1014 FAX. 517-339-8047

Charlotte Office  
Ph. 517-543-7076

Marshall Office  
Ph. 269-781-9800