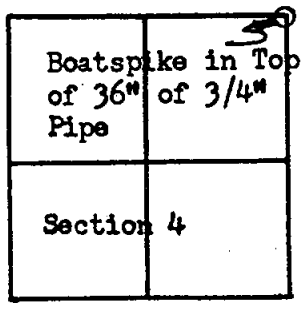


Form 280 (Rev. 3/60) GOV'T. MONUMENT WITNESSES RECORD

T. 4 N., R. 2 W., C.S. 33034 A US-27 SEC. NO. 4 G-1
22



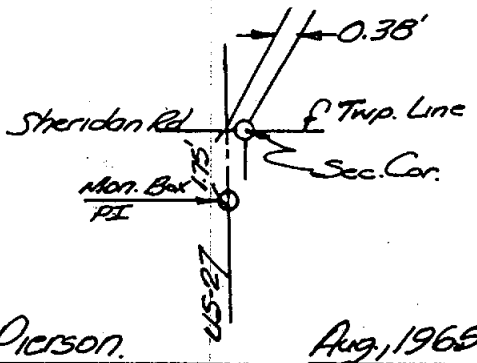
DESCRIPTION

NE Corner of Section 4,
T.4 N., R.2 W., Lansing Twp.
Ingham County, Michigan

Boatspike in top of 36" of
3/4" pipe

WITNESSES

USC&GS Mon. - S 87°E 52.25'
SW Cor. Bldg. S 43°E 101.29'
SE Cor. of Top Conc. R.O.W. Marker N 64°W 58.48'
NE Cor. Bldg. S 48°W 122.83'
3521



A. Pierson.

Aug, 1965

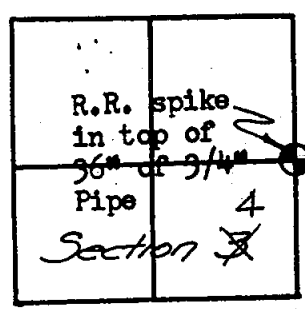
MICHIGAN STATE HIGHWAY DEPARTMENT

SURVEY CHIEF

DATE

Form 280 (Rev. 3/60) GOV'T. MONUMENT WITNESSES RECORD

T. 4 N., R. 2 W., CS 33034 A US-27 SEC. NO. 3 G-2
23



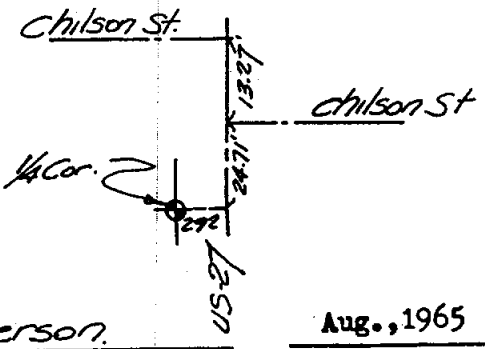
DESCRIPTION

East $\frac{1}{4}$ Corner of Section 4,
T.4 N., R.2 W., Lansing Twp.
Ingham County, Michigan

R.R. spike in top of 36" of
3/4" pipe, 2.92 ft. West of
centerline of pavement

WITNESSES

SE Cor. of Bldg. -N40 W-88.84°
SW Cor. of Bldg. N50E -101.88°
NW Cor. of Bldg. S78E -71.55°
SW Cor. of Bldg. S45E -102.75°



A. Pierson.

Aug., 1965

MICHIGAN STATE HIGHWAY DEPARTMENT

SURVEY CHIEF

DATE

Drawing Name: 66645
 Project Name: 66645
 Project Path: I:\66\66645\
 Username: jautenrieth

| Number | Northing | Easting | Elevation | Raw Desc | Full Desc |
|--------|------------|------------|-----------|-------------|-------------|
| 1 | 4073.4424 | 9215.9582 | 0.00 | LA-5-11-2 | LA-5-11-2 |
| 2 | 3733.6493 | 9628.6394 | 0.00 | LA5-11-1 | LA5-11-1 |
| 3 | 3790.8900 | 9989.1535 | 0.00 | LA5-11-3 | LA5-11-3 |
| 4 | 4152.0833 | 10042.2151 | 0.00 | LA5-12-4 | LA5-12-4 |
| 5 | 4578.5214 | 10052.8198 | 0.00 | LA5-16-8 | LA5-16-8 |
| 6 | 4638.9938 | 10384.0753 | 0.00 | LA5-18-10 | LA5-18-10 |
| 7 | 5538.6443 | 9926.8740 | 0.00 | LA5-19-11 | LA5-19-11 |
| 8 | 6078.0144 | 9691.4762 | 0.00 | LA5-20-12 | LA5-20-12 |
| 9 | 7012.8797 | 9364.0676 | 0.00 | LA5-21-13 | LA5-21-13 |
| 10 | 7321.5159 | 9440.2938 | 0.00 | LA5-22-14 | LA5-22-14 |
| 11 | 7253.2658 | 10195.5765 | 0.00 | LA5-23-15 | LA5-23-15 |
| 12 | 8175.7792 | 10201.1017 | 0.00 | LA5-26-18 | LA5-26-18 |
| 13 | 9056.5907 | 10238.8502 | 0.00 | LA5-27-19 | LA5-27-19 |
| 14 | 10019.6414 | 10221.8924 | 0.00 | LA5-28-20 | LA5-28-20 |
| 15 | 9982.0605 | 11097.3061 | 0.00 | LA5-30-22 | LA5-30-22 |
| 16 | 9980.5335 | 12001.4049 | 0.00 | LA5-31-23 | LA5-31-23 |
| 17 | 9979.3994 | 12899.7241 | 0.00 | LA5-33-25 | LA5-33-25 |
| 18 | 10009.6531 | 13380.1225 | 0.00 | LA5-34-26 | LA5-34-26 |
| 19 | 9997.5817 | 13968.3385 | 0.00 | LA5-35-27 | LA5-35-27 |
| 20 | 10264.5371 | 13931.1733 | 0.00 | LA5-36-28 | LA5-36-28 |
| 21 | 10514.5869 | 14642.7861 | . | LA5-61-53 | LA5-61-53 |
| 22 | 9995.6512 | 12647.2079 | . | LA5-7-24-G1 | LA5-7-24-G1 |
| 23 | 10009.3507 | 15426.3639 | . | LA5-56-48 | LA5-56-48 |
| 24 | 9564.0243 | 16858.0306 | . | LA5-62-54 | LA5-62-54 |
| 25 | 9997.8324 | 17771.1184 | . | LA5-63-55 | LA5-63-55 |
| 26 | 10000.0000 | 17932.0138 | . | LA5-9-58-I1 | LA5-9-58-I1 |
| 27 | 9229.1302 | 15402.3467 | . | LA5-55-47 | LA5-55-47 |
| 28 | 8263.6225 | 15323.0317 | . | LA5-54-46 | LA5-54-46 |
| 29 | 7435.3893 | 15282.7966 | . | LA5-5-45-H2 | LA5-5-45-H2 |
| 30 | 6633.8744 | 15126.9278 | . | LA5-5244 | LA5-5244 |
| 31 | 5986.4843 | 15189.3234 | . | LA5-51-43 | LA5-51-43 |
| 32 | 5568.4704 | 14705.6598 | . | LA5-50-42 | LA5-50-42 |
| 33 | 5056.8034 | 14014.3192 | . | LA5-43-35 | LA5-43-35 |
| 34 | 4773.0139 | 13695.5509 | . | LA5-42-34 | LA5-42-34 |
| 35 | 4775.8082 | 14190.8961 | . | LA5-44-36 | LA5-44-36 |
| 36 | 4806.6604 | 14922.3757 | . | LA5-45-37 | LA5-45-37 |
| 37 | 4795.8336 | 15284.8341 | . | LA5-4-38-H3 | LA5-4-38-H3 |
| 38 | 7442.8582 | 12635.9572 | . | LA5-8-41-G2 | LA5-8-41-G2 |
| 39 | 7428.6878 | 12675.5158 | . | LA5-48-40 | LA5-48-40 |
| 40 | 6269.1564 | 12658.9289 | . | LA5-47-39 | LA5-47-39 |
| 41 | 4860.5830 | 12679.2767 | . | LA5-40-32 | LA5-40-32 |
| 42 | 4796.2505 | 12639.1518 | . | LA5-33-G3 | LA5-33-G3 |
| 43 | 4796.7427 | 12156.6716 | . | LA5-39-31 | LA5-39-31 |
| 44 | 4970.2290 | 11133.3837 | . | LA5-3830 | LA5-3830 |
| 45 | 4946.1759 | 10214.7685 | . | LA5-37*29 | LA5-37*29 |
| 46 | 4470.1168 | 9986.5399 | . | LA5-15-7 | LA5-15-7 |
| 47 | 4615.2631 | 9982.8160 | . | LA-5-17-9 | LA-5-17-9 |
| 48 | 4070.5007 | 9723.8932 | . | LA5-13-5 | LA5-13-5 |
| 49 | 4514.9328 | 9210.1064 | . | LA5-14-6 | LA5-14-6 |
| 50 | 7443.3312 | 9994.8298 | . | LA5-2-17-F2 | LA5-2-17-F2 |
| 51 | 7443.1507 | 10235.9997 | . | LA5-24-16 | LA5-24-16 |
| 52 | 10000.0000 | 10000.0000 | . | LA5-1-21-F1 | LA5-1-21-F1 |
| 53 | 9997.0274 | 15286.4355 | . | LA5-6-49 | LA5-6-49 |
| 54 | 9997.9186 | 15287.4335 | . | LA5-6-50 | LA5-6-50 |
| 55 | 9998.1222 | 15289.2128 | . | LA5-6-51 | LA5-6-51 |
| 56 | 9998.0487 | 15291.2357 | . | LA5-6-52 | LA5-6-52 |

89-2018
24685

LAS-43-35

LAS-44-36

LAS-42-34

LAS-40-32

LAS-33-33

LAS-47-39

LAS-39-31

LAS-38-30

LAS-37-29

LAS-15-7

LAS-17-9

LAS-8-41-02

LAS-48

LAS-2

LAS-2-17-r2

LAS-2-17-r2



LAS-6

285192
A-0115-58N

583938
A-8105-58N

W.66°20'00N
2639.56

LAS-5-45-12

LAS-52-44

LAS-51-43

LAS-50-42

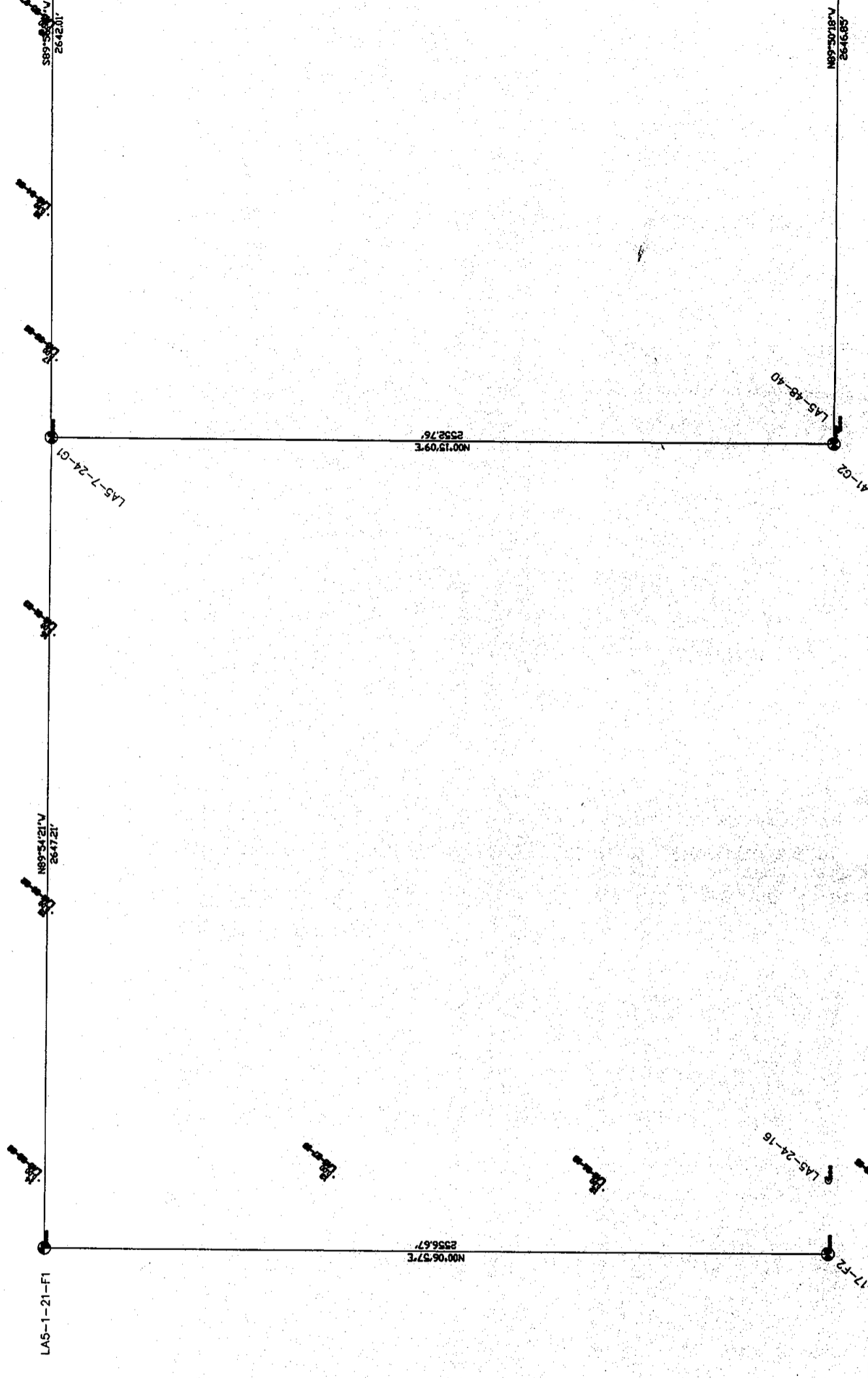
LAS-43-35

LAS-44-36

LAS-42-34

LAS-45-37

LAS-4-38-13



LAS-1-21-F1

LAS-7-24-G1

2556.57
N00.06.57E

2552.76
N00.15.09E

2647.21
N89.54.21W

2642.01
S89.58.41V

LAS-24-18

LAS-48-40

17-F2

41-G2

2891932
A-8105-68M

LAS-9-56-11
LAS-63-55

N00°03'28"W
2571.97'

LAS-62-54

0829.92
N33°15'58S

2514.92
N81°15'58S

LAS-56-48

LAS-55-47

LAS-54-46

N00°08'36"E
2362.74'

LAS-42

LAS-81-53

1021.92
N33°15'58S

2514.92
N81°15'58S