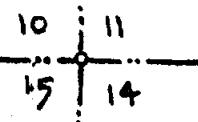


Section Corner

Corner 10, 11, 14 and 15.



This corner was set by Musgrave Evans, Deputy Surveyor, in February 1827 and is described as a "post corner to sections 11, 12, 13 and 14 from which an ironwood 4" in diameter bears N 56 E, 7 links distant and a beech 12" in diameter bears N 77 W 12 links distant.

Section line measurements,  $\frac{1}{4}$  cor. So. 40.00 ch., Cor South 80.00 chains -  $\frac{1}{4}$  corner East 40.02 chain, cor. east 80.05 chain,  $\frac{1}{4}$  N 40.00 chain, and corner north 80.00 chains.

No reference is made by surveyors to this corner until September 28, 1888 when Prof. J. D. Davis of the University of Michigan was employed by the City Council to re-establish the south line of Section 10. His report reads as follows: "Here I planted a monument to perpetuate the rapidly disappearing fence post which, as all the testimony and evidence, I had, concurred in designating as the place of corner. I put an iron, stone, and brick, all buried. An iron rod, round,  $1\frac{1}{2}$ " diameter 22 inches long forked at the bottom with the top  $7/8$ " square. For about five inches around this I put stone and four brick laid horizontally. The following are the witnesses for the corner sections 10, 11, 14 and 15.

- white ash, 9 inches, southwesterly 35.32 feet.
- elm 20 " northwesterly 64.32 "
- Hickery 8 " Northerly 18.97 "

All trees marked at root

See Council proceedings liber 13 P 265, also copy of Davis notes as made for this office by H. Bouchard of Ann Arbor.

County Surveyor Robb does not mention any change in this corner at the line of his remarking of section corners in 1909 although the Monument Records in the City Engineer's office says "Iron pipe had been removed and replaced by concrete post 3" x 3" x 30" by Robb in 1909. On July 1921 this corner was pointed out to U. M. Cade of the City Engineer's Office by A. H. Bateman, County Surveyor, as being an anchor post surrounded by cobblestones. All three of the witness trees marked by Prof. Davis are standing although the blades were indeterminate. The post was removed and the original mark set by Prof. Davis was found in position 2 feet north of post. Making allowances for growth of trees its position checked with references. The pipe could not be wrongly identified on account of the fork on lower end. It was removed and replaced with a standard 1921 City monument consisting of a reinforced concrete post 4" diam. 30" diameter at top with brass plug in center.

References

- X V blaze - head nail - W. ash 26" diam. S 48.38 W, 35.02
- " " " " - Elm 34" " N 50 54' W, 63.73
- X " " " " Hickery 14" " N 71 35' W, 18.65
- N. W. Cor. Concrete Wall 625 Clemens S 44 10' E, 114.20

The Industrial School for Boys owns property to north and west of this monument. It is the northwest corner of Adams Addition. Several lot stakes checked each other in position on the line south of this point were recovered and measurements taken from them place the original corner 2.00' north of the corner evidently used for the plat, see sketch.

N.  $\frac{1}{4}$  Corner Section 14

At the S. E. Corner of Downer's Subdivision  
the intersection of Saginaw St and Merrit Ave.

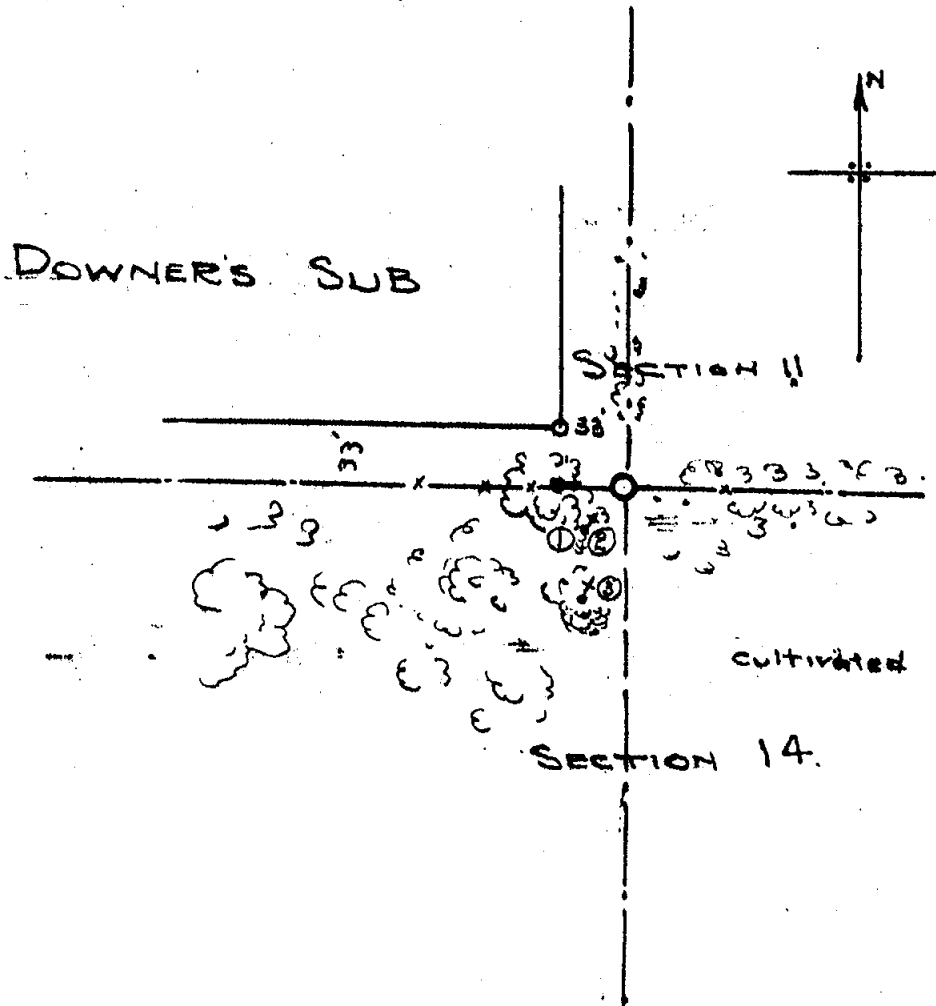
S.  $\frac{1}{4}$  Corner Section 11

This corner was established by Musgrave Evans, Deputy Surveyor, U. S. Land Office in February 1827 and is described as "a  $\frac{1}{4}$  section post at average distance on the true line from which an aspin 15" in diameter bears S 2° W 9 links distant and a beech 18" in diameter bears N 9° E 39 links distant". Distance to  $\frac{1}{4}$  corner east and west is 39.91 chains.

R. Robb marked this corner in 1909 with a cement post. References Hickory 10" west 11.4 feet, Poplar 12", north 4 feet.

Recovered the cement post and remarked the point with a 1921 standard monument.

- 1. 18" Black Ash N 89° W 10.60 feet.
- 2. 10" White Oak S 70° W 21.85 "
- 3. 20" Elm S 14° W 62.15 "



SOURCE: LANSING Public Service CADES 1921 Survey P. 31  
 TRANSCRIBED from ~~ORIGINAL~~ DUPLICATE on file at REMON. OFFICE

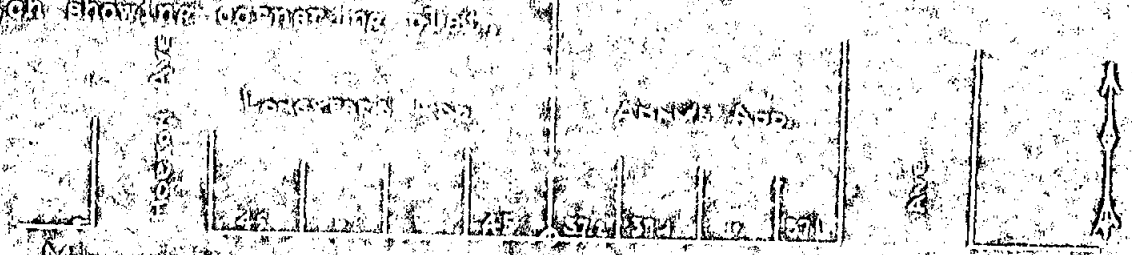
W 4 Corner Section 14

E 4 Corner Section 15

Monument on Avenue and Old City Limits

This corner was set by Mr. J. W. ... Deputy Surveyor W. S. ...  
 from ... and is described as a 1/2 section  
 and by ... 6 inches in diameter bears S 41 1/2 W 1/4 Section  
 line monument of iron 1/2 inch diameter corner bolts 40,000 grains

An excavation was made in the ground in 1906 near the monument  
 and a hole was dug 10 feet deep and a hole was made in the  
 ground monument the corner plate of 1/2 inch diameter under above reader.



This monument was set by ... Deputy Surveyor W. S. ...  
 from ... and is described as a 1/2 section  
 and by ... 6 inches in diameter bears S 41 1/2 W 1/4 Section  
 line monument of iron 1/2 inch diameter corner bolts 40,000 grains

An excavation was made in the ground in 1906 near the monument  
 and a hole was dug 10 feet deep and a hole was made in the  
 ground monument the corner plate of 1/2 inch diameter under above reader.

On a survey in the above monument found a 1/2 inch corner rod of  
 steel 3 feet long and the ground under it from about 40 to 58 feet distant  
 this had been set 1/2 inch diameter by ... the present  
 owner of the lot on the corner of the place of record at the corner.

2ND PAGE OF CADES INFO  
 ON THIS CORNER IS SAME  
 AS P. 2 OF 3 ATT # 8

SOURCE: Horn Notes

TRANSCRIBED from ORIGINAL on file at Remon. Office  
DUPLICATE

W 1/4 Corner Section 14 I-4

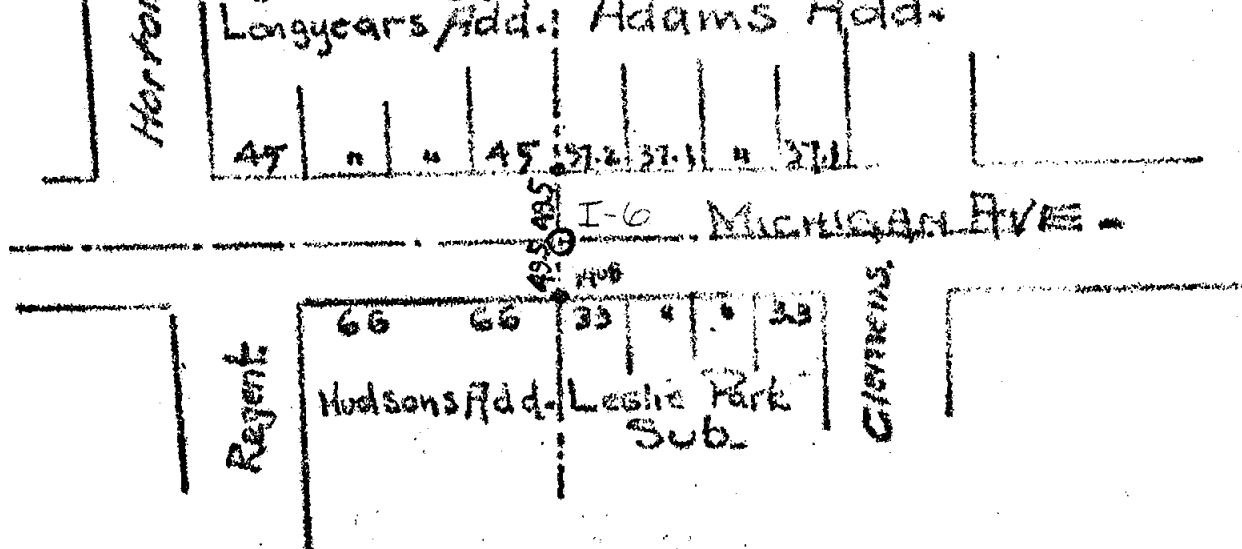
E 1/4 Corner Section 15 I-6

Michigan Avenue and Old City Limits.

This corner was set by Moscow Evans, Deputy Surveyor, U. S. Land Office, in February 1827, and is described as a "1/4 section post from which a beech 8" diameter bears S 78 # 9 links distant and a butternut 6 inches in diameter bears S 41 W 44 links, section line measurements corner N 40.00 chains, corner south 40.00 chains. I-6 to I-5 40 ch. I-6 to I-7 40 ch.

No reference in available surveyor's records to this monument until 1906 when City Engineer's records say "Set gas pipe when street was paved in 1906, which contractor drove below stone header. Sketch in monument shows in center line of 50' pavement under above header.

Sketch showing cornering plats.



Plats cornering on the above corner are Longyear's Addition, Sellers, Surveyor. Date 4/4/1893, Hudsons Addition, H. D. Bartholomew Surveyor, an iron stake at the corner and one 330' west on center line Michigan Avenue - no other iron stakes on plat; Leslie Park addition shows an iron pipe driven 49.5 south of monument on S. line of Michigan Avenue - J. F. Clemons, Surveyor.

Adams Addition, platted in February 1908, shows an iron stake set 49.5 feet north of Monument, H. K. Vedder, Surveyor.

On digging up the above monument found a 1/8th copper rod extending through pavement to cross on top of a 6" x 6" sandstone post 3 feet long - to the south found an iron stake 49.58 feet distant. This had been set 12 years previously by J. O. Braden, the present owner of the lot to the southeast, in place of wooden plat stakes.

LANSING  
TOWNSHIP

T 4N, R 2E

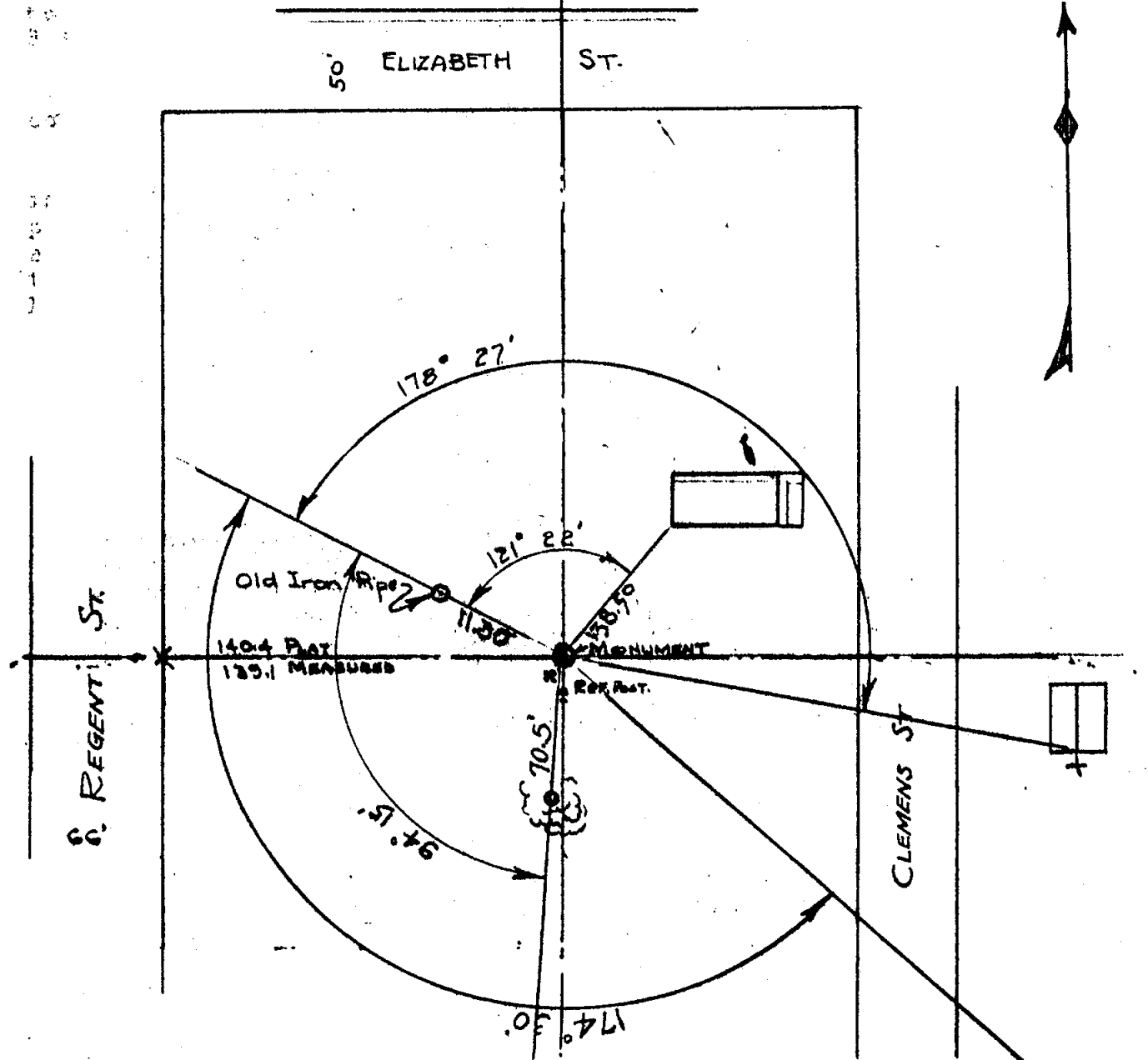
1-6  
CORNER CODE

8  
ATTACHMENT #

P. 1 of 3

I-7  
Cadastral sketch to go w/  
Att. #6

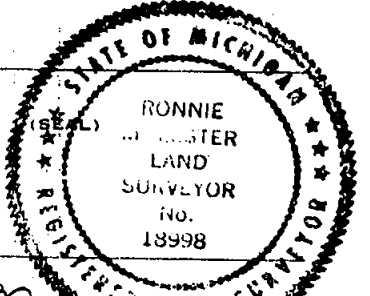
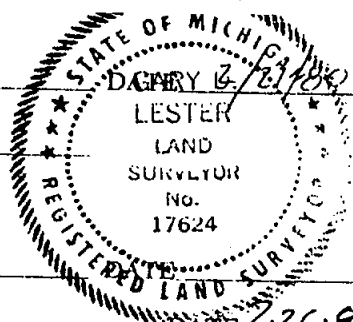
Magnetic north	0.00		
S to Corner	41° 22'	138.50 feet	
South Gable	98° 27'		
North Gable # 637 Clemens Ave	105° 30'		
& nail in 6" Elm	185° 45'	70.55 feet	
Old iron pipe and tile	280°	11.30 "	



Plats dependent on this corner are;

- Paul Park Addition
- Hudson Addition
- Ulrich's Sub.
- Leslie Park Sub.

SIGNED BY Ronnie M. Lester  
 SURVEYOR'S MICHIGAN REGISTRATION NO. 18998



SIGNED BY \_\_\_\_\_  
 CHIEF OF SURVEY PARTY  
 APPROVED AND SIGNED BY [Signature]