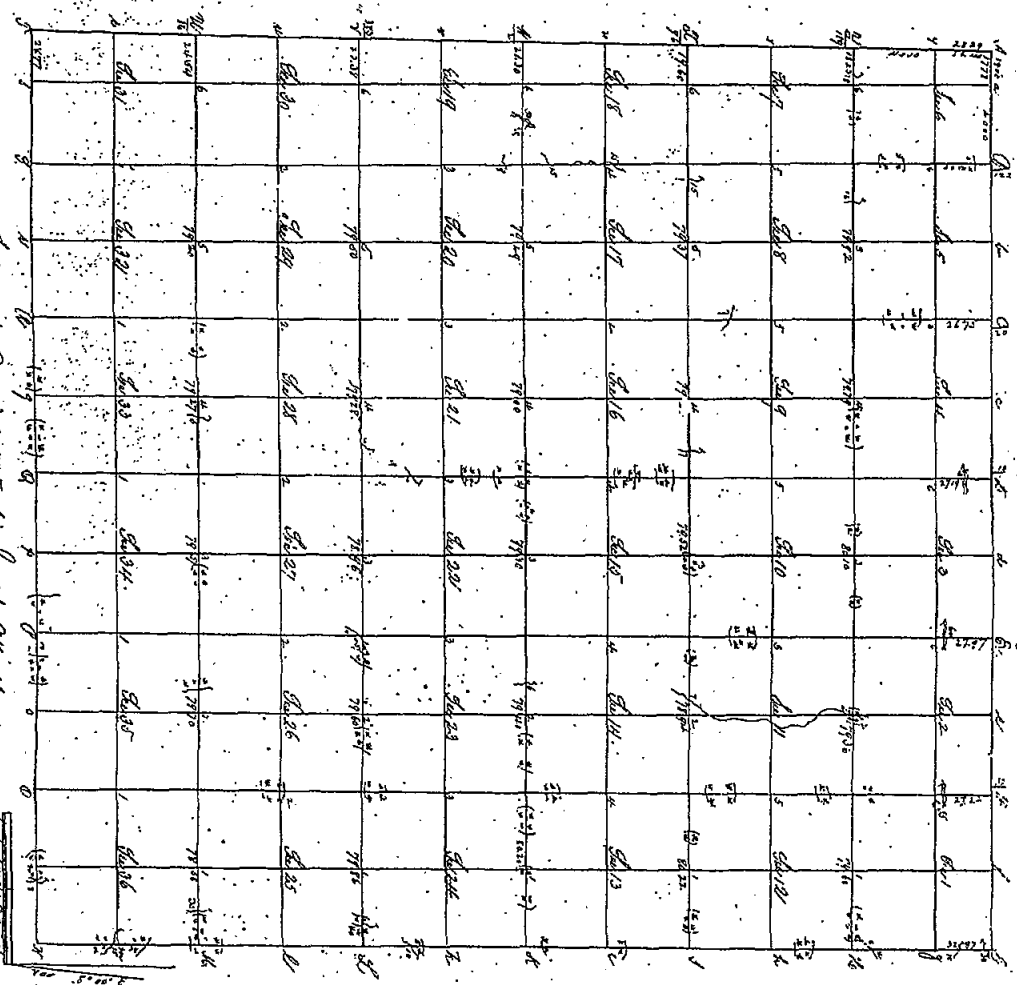


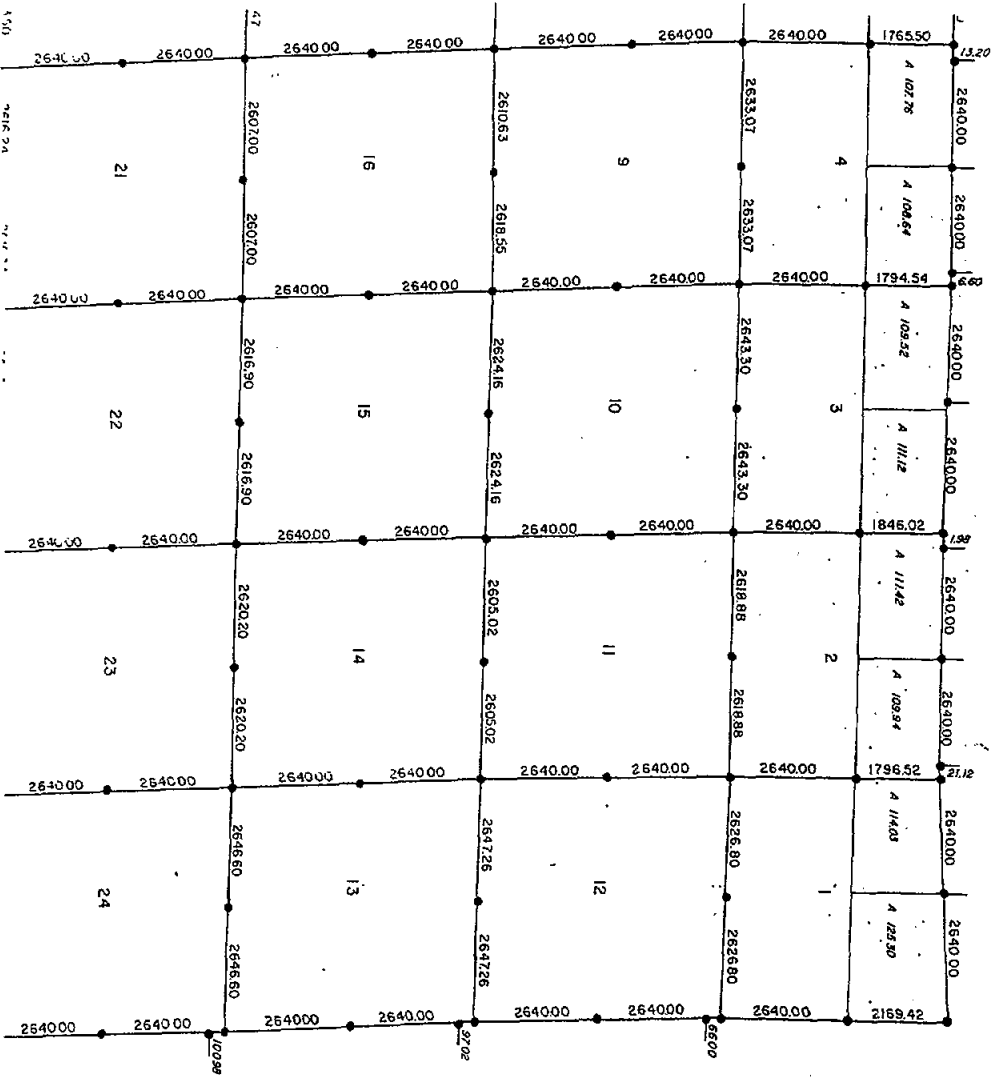
Township No. III East, Range No. II East (Sec. 5m) LEROY

23



Surveyed in December 1850 by Joseph Alexander D.S.

| Section | Acres | Owner |
|---------|-------|------------|
| 1 | 160 | Wm. H. ... |
| 2 | 160 | Wm. H. ... |
| 3 | 160 | Wm. H. ... |
| 4 | 160 | Wm. H. ... |
| 5 | 160 | Wm. H. ... |
| 6 | 160 | Wm. H. ... |
| 7 | 160 | Wm. H. ... |
| 8 | 160 | Wm. H. ... |
| 9 | 160 | Wm. H. ... |
| 10 | 160 | Wm. H. ... |
| 11 | 160 | Wm. H. ... |
| 12 | 160 | Wm. H. ... |
| 13 | 160 | Wm. H. ... |
| 14 | 160 | Wm. H. ... |
| 15 | 160 | Wm. H. ... |
| 16 | 160 | Wm. H. ... |
| 17 | 160 | Wm. H. ... |
| 18 | 160 | Wm. H. ... |
| 19 | 160 | Wm. H. ... |
| 20 | 160 | Wm. H. ... |



LEROY
 TOWNSHIP
 T3N-R2E
 G.L.O. PLAT MAP
 (GENERAL LAND OFFICE)

- Corner Set by the original survey
- Post Set by the original survey
- Acreage (from original G.L.O. plats)
- Closing Corner Offsets

Measurements which are shown outside subject township refer to adjacent townships. All measurements shown are in feet.

