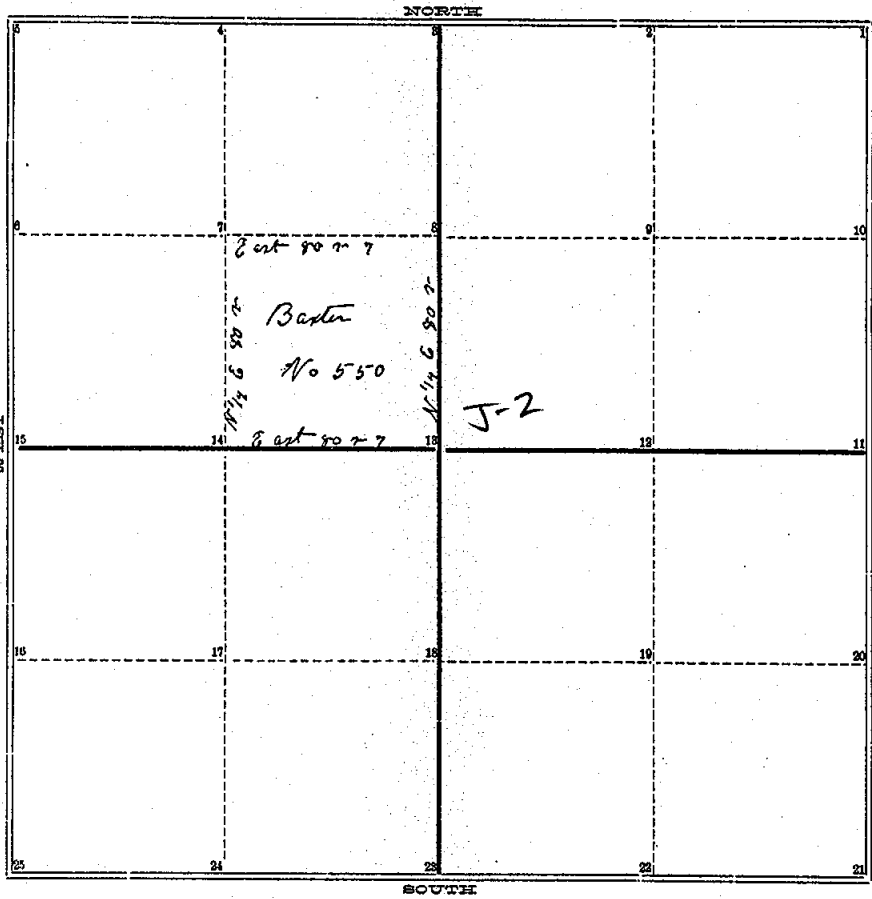


COUNTY SURVEYOR'S RECORD,

TOWN *One* NORTH, RANGE *One West*, MERIDIAN OF MICHIGAN.

SEC. *2*



P 89 Vds

TOWN *One* NORTH, RANGE *One West*, MERIDIAN OF MICHIGAN.

- 1
- 2
- 3
- 4
- 5
- 6 *W Oak 15 S 32 1/2 W 8*
- 7 *Do 14 N 77 1/4 E 33*
- 8 *Do 26 S 79 1/4 W 62*
- 9
- 10
- 11
- 12 *W Oak 15 N 65 W 15*
- 13 *Do 15 S 45 E 43*
- 14 *Do 7 N 51 1/4 E 77*
- 15
- 16
- 17
- 18
- 19
- 20
- 21

J-2

24
25

INGHAM COUNTY, MICHIGAN.

252

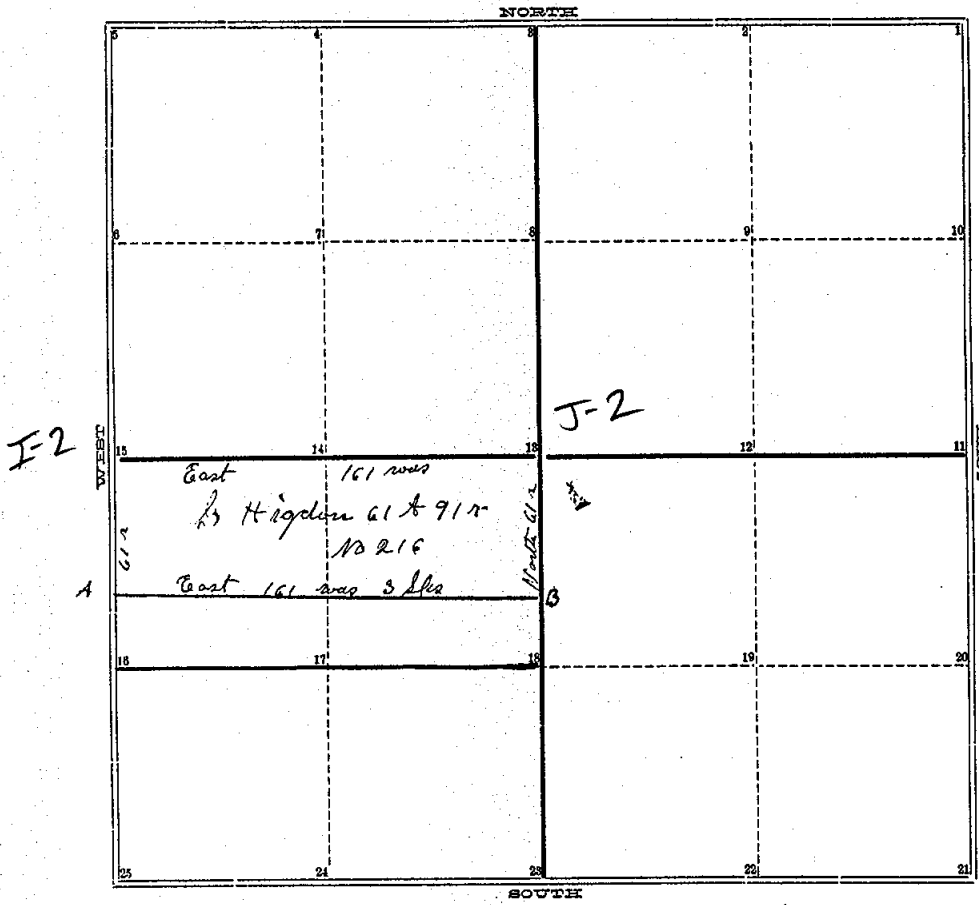
TOWN *One* NORTH, RANGE *One West*, MERIDIAN OF MICHIGAN.

Run by the true Meridian Vari 3° E
Surveyed by A Jackson

COUNTY SURVEYOR'S RECORD,

TOWN One NORTH, RANGE One West, MERIDIAN OF MICHIGAN.

SEC. 3 West



Page 9 Vol 1

TOWN One NORTH, RANGE One West, MERIDIAN OF MICHIGAN.

- 1
- 2
- 3
- 4
- 5
- 6
- 7
- 8
- 9
- 10
- 11
- 12 white Oak 14 N 62 1/2 W 15 lks
- 13 W Oak 16 S 66 E 43 lks
- 14 W Oak 7 S 60 W 11 lks
- 15 W Oak 10 S 76 E 14 lks
- 16
- 17
- 18
- 19
- 20
- 21
- 24
- 25
- 13 Ash 5 N 67 1/2 W 25 lks
- A Jam 12 S 62 E 57
- W Oak 20 S 76 W 18 lks
- B W Oak 16 N 76 E 25 lks

I-2

I-2

INGHAM COUNTY, MICHIGAN.

TOWN. *One* NORTH, RANGE *One West*....., MERIDIAN OF MICHIGAN.

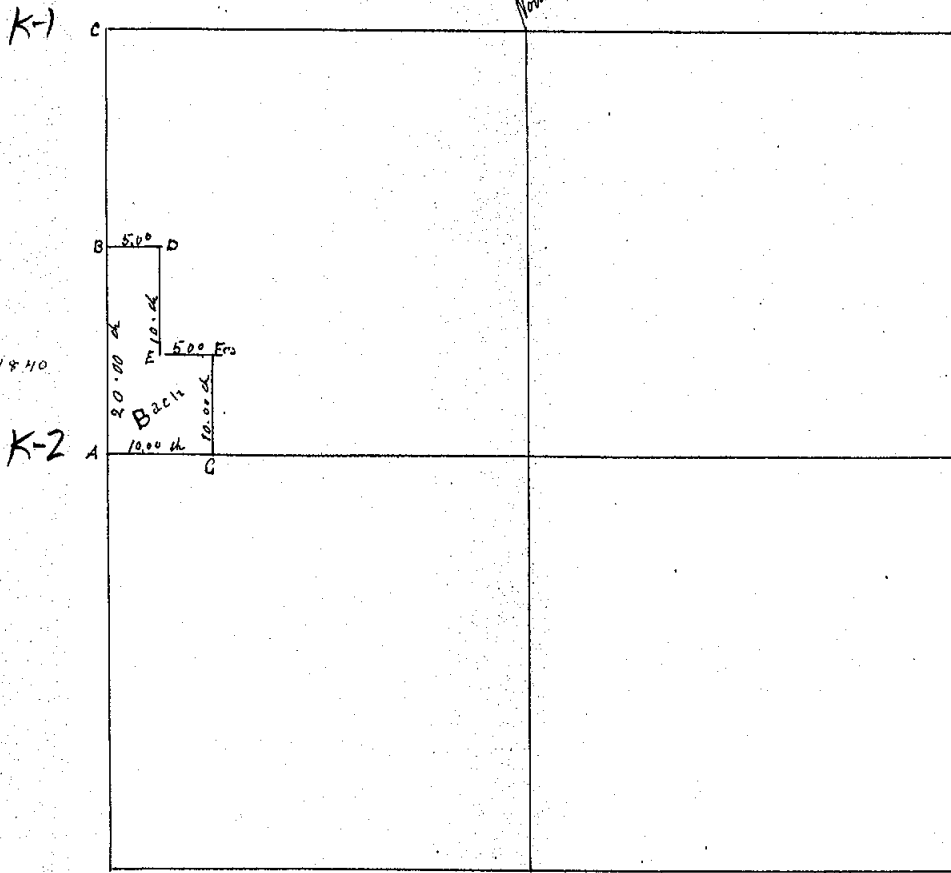
Run by the true Meridian $3^{\circ} 10' 6''$

Surveyed and recorded Dec 12th 1842 by A Jackson County Surveyor
for the County of Ingham

COUNTY SURVEYOR'S RECORD,

TOWN One NORTH, RANGE One West, MERIDIAN OF MICHIGAN.

Section 1



Sunny No 1840

74+5-024 H

TOWN One NORTH, RANGE One West, MERIDIAN OF MICHIGAN.

- 1 24
- 2 25
- 3
- 4
- 5
- 6
- 7
- 8
- 9
- 10
- 11
- 12
- 13
- 14
- 15
- 16
- 17
- 18
- 19
- 20
- 21

OVER FOR WIT'S

INGHAM COUNTY, MICHIGAN.

TOWN One NORTH, RANGE One West, MERIDIAN OF MICHIGAN.

Survey of A Parcel upon the NW 1/4 of Section 1 of Twp 4 N. R. 1 W. Made May 6th 1896
for J. Bock Surveyed from deed, at A the old posts were found
Posts were set & corners marked as follows

A. Brick & Gas Pipe. from Bchey 16 South 49 1/2 l. W Oak 14 N 59 3/4 W 68 l/2

B. Iron Rod & tile from Hick 6 S 10 E 10 l/2 Ash 6 N 58 W 9 1/2 l/2

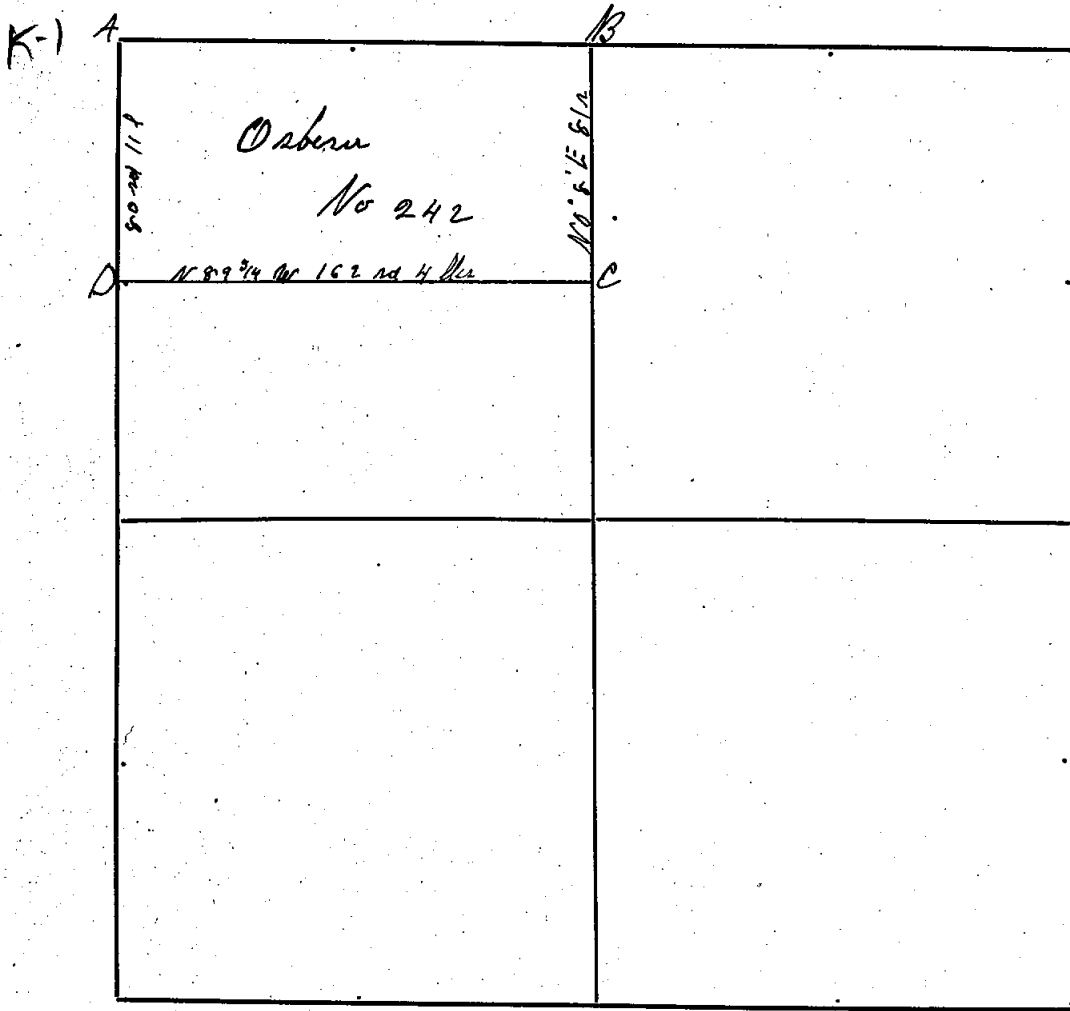
C. Stone & Brick from W Oak 12 N-W 33 3/4 l. Walnut 4 S-E 43 3/4 l/2

D. E & F. Posts only

G. Iron Post & casing - Charles Cook & Elewath Braily sworn Chasman

Magnetic Variation 0

Recorded May 10th 1896 W A Rowe Geo Surveyor



Station	Corner.	Timber.	Bearing.	Links.	Station	Corner.	Timber.	Bearing.	Links.
A		Hick 12	S 57 1/2 E	13					
		" " 7	S 70 W	38 1/2					
B		in marsh no tree							
		WO 24	N 37 W	22					
C		W Ash 10	S 74 1/2 W	20 1/2					
		Hick 14	N 28 E	37					
D		B Ash 14	N 52 E	31 1/2					

A Jackson County Surveyor.

Var. 3 deg. 10 min. E

Liber 7 Page 10

Jan 16th 1843