



Blw 18 N 45 W 448

17:00:00/12 S 18 1/2 E 285

43.00 Le Mr

374.00 on down fm

69.00 to Pond

73.00 over "

8700 out to Cor of 31832 fm

Alk 9 N 47 W 58

Al 30 N 63 1/2 E 79

W on Bar 9 31 T 54 2 E

4.17 Blw 14

35200 on Mr

40000 out on P fm

W 12 N 34 E 181

measured

4300 Le Mr

5432 Mr 14

66.50 on fm

66.47 out Mr. 15.17 out N 9 po.

out to at mt Cor of 455 N 45 1/2 E fm

down 10 S 15 1/2 E 21

" 12 N 10 W 27

NEAT Barnyard.

bar. 8.30 E. by observation 5.55 E.

N on E of P 36 T 40 1 E

1.50 Le fm

8.50 Run S. W. Co Mr

15.56 Mr 12

16.95 out to on left bank of R. 2000 ft. fm.

Blw 12 N 40 W 14

" 9 S 31 E 32

20.26 out to on right bank fm

Re 4 N 11 1/2 W 16

8000 out to Car by 13 + 24 juv  
 RDD 15 N40W87  
 RDD 18 S46W57

4000 out to Car by juv  
 RDD 12 S86W205  
 RDD 18 N45E198

St on E/Pn. p13 T4A1E  
 16.84 RDD 14  
 4000 out to Car by juv  
 RDD 15 N73W112

St on E/Pn. p1 T4A1E  
 RDD 10 N64W82  
 " 12 S57W63

5094 " 13  
 7113 " 13  
 8000 out to Car by 12 + 13 juv  
 RDD 11 N27W512  
 " 14 S63W35

St on E/Pn. p1 T4A1E  
 RDD 9  
 7255 Blue 12  
 4000 out to Car by juv  
 RDD 13 N53W39  
 E 4 S73W35

St on E/Pn. p12 T4A1E  
 1.17 RDD 12  
 2530 RDD 13

4217 Red 11  
 44.30 on Sn  
 4000 Red "  
 8000 out to Car by

8.04 Fe 56  
 16.33 Re 18  
 4000 aut g/p fu  
 AD 18 A80W12  
 AD 26 A5W31  
 57.58 " 14  
 73.00 on fm  
 8000 aut p con 7.8.17+18 ad Miss in  
 Dec 19 S11E12  
 " 13 A70E13

W Catic 8-17  
 39.77 aut p bar and fu  
 AD 20 A43W69 1/2  
 " 32 A52W65 1/2  
 74.54 to see con  
 Catic 7-28  
 3.88 AD 22  
 30.99 AD 18  
 4000 aut g/p fu  
 AD 20 A63 1/2 E 29  
 " 20 A2 E 63  
 6000 on fm  
 7000 ad 14  
 5000 aut p con 5.6.7-8 fu  
 Jan 9 A54E84 1/2  
 AD 9 A62E200

20 on 12<sup>th</sup> June 578

200 lb fm

4000 net gm p

76.50 en fm

79.20 Br. sh + S. line at p

N C 578

39.60 net gm p at 1000 gm

NO 10 231 E 44

NO 10 113 W 32

79.20 to Acc. Con

N C 578

31.50 Le Jan fm

4000 net gm p km (at fm)

5<sup>th</sup> Lu 9 148 E 81

AO 8 137 W 34

4800 lb fm

5000 en. 199

6580. Le "

7814 Rehr 18

96.46 Br. sh + S. line at p

Net p at 1000 gm 95.6 gm

NE Du 11 166 W 37

C 4 552 E 25

N C 30731

1565 AO 36

2088 NO 20

3200 en fm

3850 Le "

4000 net gm p km

AO 11 262 E 33

AO 13 172 W 40

5006 MC 18

5656 AO 30

NO. 20 SF 1/4 E 99

N Date 7-18

1998 NO 20

34.15 " 17

40000 all grp bus

AD 8 A36 W 28

NO 17 S12 W 66

58.82 AD 8

62.66 Bur W 9 ar p

N Date 6-17

300 Le Mn

1709 NO 14

23.50 cm Mn

32.50 Le "

40.00 all grp bus

NO 11 SH 1/2 W 12

" 12 A33 E 6 1/2

52.00 Le Mn

64.56 Bur W 9. S W 0 S 9 P

A 3 all part int. Co. of 6-17 bus

NO 12 A38 E 53

" 16 A89 E 63

Measurements of part of a State in Sec 5.

Beginning at post in st. Br on E side of

the State, thence,

Course S 81° 15' W Remarks

S 28 1/2 E 3000 in Sec 5

S 52 W 1100

N 6 W 9.70 to pt in st. Br on W side of State

SOURCE: G. L. O. FIELD NOTES PAGE 64

TRANSCRIBED from ~~ORIGINAL~~ DUPLICATE on file at REMON. OFFICE

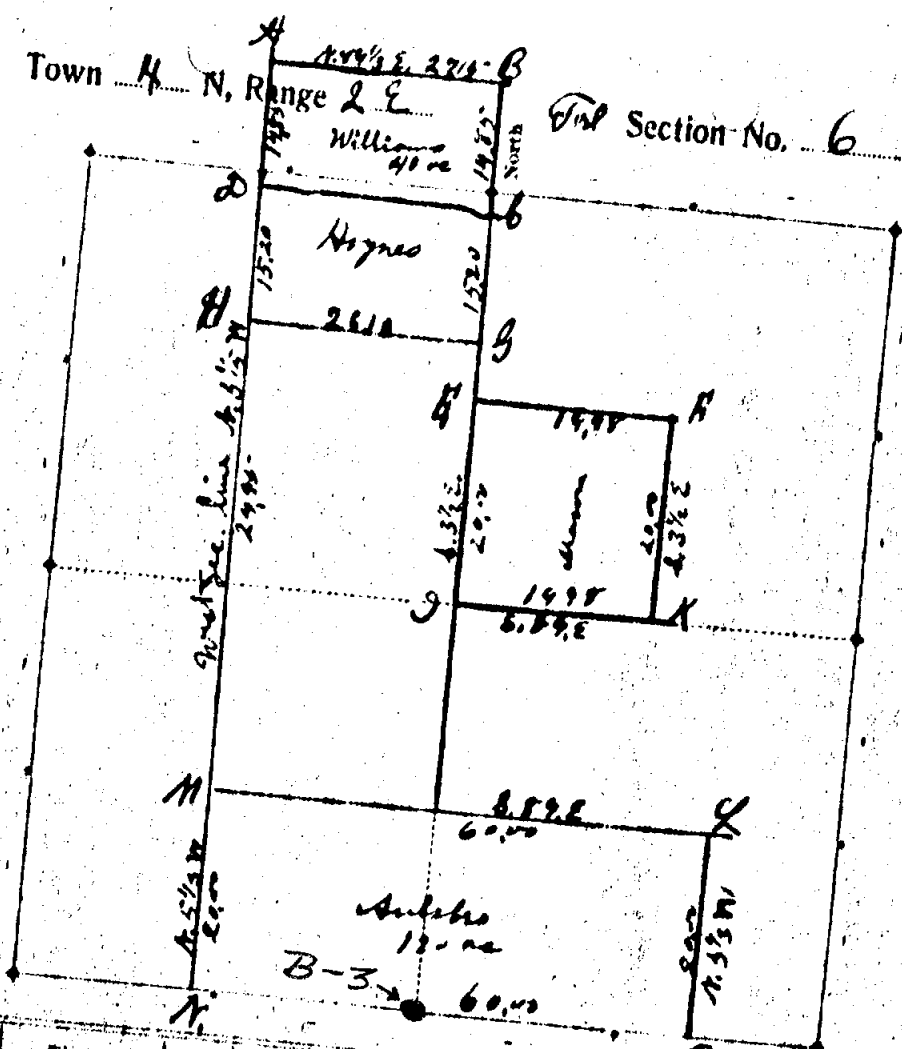
64

NO 30 S 8 1/2 E 99

N Oct 7-18  
19.98 NO 20  
34.15 " 17  
4000 set grp pw  
BO 8 N 36 W 28  
NO 17 S 12 W 66  
58.82 BO 8  
62.66 Int Mar at p

N Oct 6-7  
3.00 le Mr.  
17.09 NO 14  
25.30 en Mr.  
2.50 le "

TRANSCRIBED from ORIGINAL DUPLICATE on file at REMON. OFFICE



Section	Timber	Area	Bearing	Links	Section	Timber	Area	Bearing	Links
A	Timber	10	S. 15° E	21	K	W. Oak	28	N. 12° W	40
B	Part in marsh	12	N. 10° W	27	L	W. Oak	12	S. 52 1/2 E	46
C	Part in marsh				M	Timber	18	S. 57 1/2 W	54
D	W. Oak	10	S. 30° W	23 1/2	N	W. Oak	24	S. 5° E	36
E	Part in marsh	2.4	N. 23° W	19	O	W. Oak	14	S. 20° E	28
F	W. Oak	20	S. 15° W	36		W. Oak	16	N. 77° E	63
G	Part in marsh	20	N. 64° W	62		W. Oak	12	N. 58° E	53
H	W. Oak	16	S. 81° E	42		W. Oak	16	N. 67° W	104
I	" "	18	N. 15° E	64		" "	12	S. 51 1/2 W	50 1/2
J	" "	24	S. 1° E	21					
K	" "	17	N. 22° W	38 1/2					

Run by the true meridian. Magnetic variation 2 degrees 49 minutes E  
 Surveyed the 23 day of Feb 1882 by

J. Jackson  
 County Surveyor of Ingham County, Michigan.

12

Sec. 6

Locke  
 township

T9 N, R2 EW

B-3  
 corner code

4  
 attachment no.

1 of 1  
 p. 1 of 1