

LAND CORNER RECORDATION CERTIFICATE

FILING REQUIREMENT OF ACT 74, MICH. P.A. 1970

46 204

FOR CORNERS OF--:	LOCATED IN--:	CORNER CODE NUMBER
1. PUBLIC LAND SURVEY	1 4 N R 2 1	A-3
2. PROPERTY CONTROLLING IN SECTION	Fr1 7.1 4 N R 2 1	A-4
3. MISCELLANEOUS PROPERTY IN SECTION	1 N R 1	
4. LOT NO.	RECORDED PLAT	
5. PRIVATE CLAIMS		

FILED

MAY 25 11 24 AM '78

REGISTER OF DEEDS

Paul Johnson

INGHAM COUNTY, MICH.

REGISTER OF DEEDS STAMP AND FILING NUMBER

I, A. Lee Padisson do hereby certify that under requirements of P.A. 74 Michigan P.A. of 1970 the corner points mentioned in lines 1 and 2 above (identified with circles on index code diagram) were, in a field survey on May 10, 1972, ~~established~~ ~~re-established~~ ~~monumented~~ ~~re-monumented~~, recovered or restored as expressed below and in conformance with regulations and rules therefore as required in the current manual of survey instructions of the United States Department of the Interior, Bureau of Land Management or by a decree of a court of law. ~~Furthermore, that the corner points mentioned in lines 1 and 2 above were, in a field survey on 19~~ found, recovered, restored, established or re-established as expressed below and in conformance with the rules of the Michigan State Board of Registration for Land Surveyors or, by a Decree of a Court of law:

A. Description of original monument and accessories and/or subsequent restoration:

Surveyed in April 1826 by Joseph Wampler

B. Description of corner evidence found and/or method applied in restoring or re-establishing corner:

A-3 NW Corner Fr1. Sec. 7, T.4 N., R.1 E.

Found in place 1 inch iron pipe located in the center of Shaftsbury Road about 4 inches below the road surface. In line with the property line fence east.

C. Description of monument for corner and accessories established to perpetuate locating the position of the corner:

witnesses established for the monument found at A-3

East 33.0 ft. 1 inch iron pipe set in the fence line east
 N. 43 E. 41.10 ft. to a 10d nail in the N. base 30 inch white oak.
 S. 72 30 E. 29.97 ft. to a 10d nail in N. base 24 inch s. maple.
 S. 54 W. 31.82 ft. to a 10d nail in N. base power pole.

SIGNED BY *A. Lee Padisson* DATE May 24, 1978

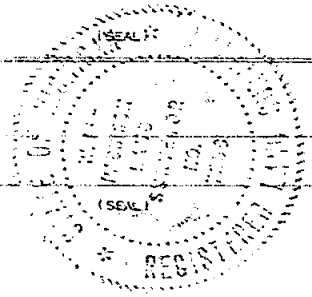
SURVEYOR'S MICHIGAN REGISTRATION NO. 7256

FOR STATE AND UNITED STATES AGENCIES:

SIGNED BY _____ DATE _____
CHIEF OF SURVEY PARTY

APPROVED AND SIGNED BY _____ DATE _____
MICHIGAN REGISTERED LAND SURVEYOR

SURVEYOR'S MICHIGAN REGISTRATION NO. _____



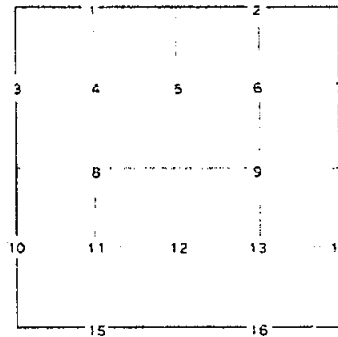
CORNER NUMBERING CODE DIAGRAMS FOR IDENTIFYING LAND CORNER RECORDATIONS AND INDEXING

FOR PUBLIC LAND SURVEY CORNERS IN THE T. 4 N. R. 2 E (MENTIONED OVER)

	A	B	C	D	E	F	G	H	I	J	K	L	M
2	6		5		4		3		2		1		
3	7		8		9		10		11		12		
4													
5													
6	18		17		16		15		14		13		
7													
8	19		20		21		22		23		24		
9													
10	30		29		28		27		26		25		
11													
12	31		32		33		34		35		36		
13													

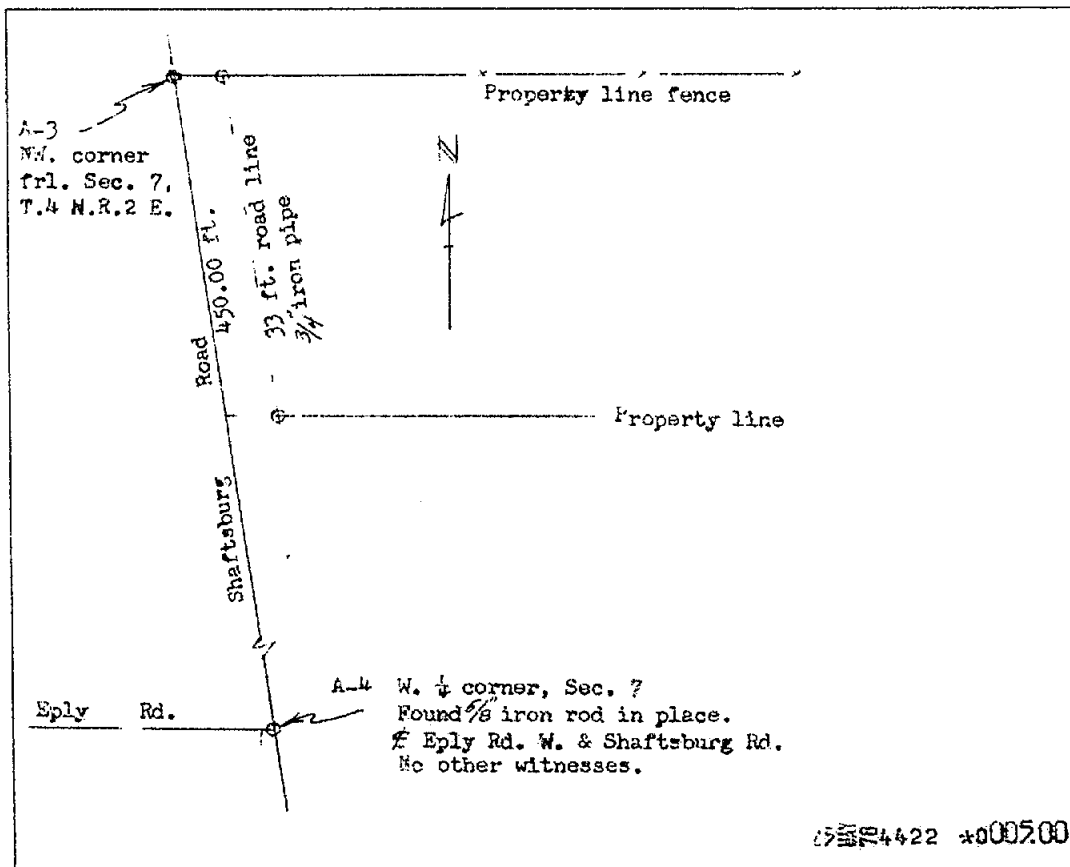
Apply letter prefix for corner points encircled above for identifying corner recordation numbers over.

FOR PROPERTY CONTROLLING AND MISC. PROPERTY CORNERS WITHIN THE SECTION (MENTIONED OVER AND EXCLUDE LOT CORNER)



1. Above coded numbers are positioned on 1/16 fractional lines of the section.
2. Township corner code numbers shall be applied to corners of above typical section not numbered.
3. Miscellaneous property corners within a section, at points other than numbered above, shall be related to at least two of above corner code numbers.
4. Private claim corners to be tied to rectangular land corners if possible - sketch required below.

EXPLANATORY SKETCH IF NECESSARY -- BELOW



LAND CORNER RECORDATION CERTIFICATE

FILING REQUIREMENT OF ACT 74, MICH. P.A. 1970

North 1/4 Corner Section 7 Locke Twp.

FOR CORNERS OF --:	LOCATED IN --:	CORNER CODE NUMBER
1. PUBLIC LAND SURVEY _____	T. <u>4</u> N. <u>R.</u> R. <u>2</u> E. <u>W.</u>	B-3
2. PROPERTY CONTROLLING IN SECTION _____	T. _____ N. _____ E. _____ S. _____ R. _____ W. _____	_____
3. MISCELLANEOUS PROPERTY IN SECTION _____	T. _____ N. _____ E. _____ S. _____ R. _____ W. _____	_____
4. LOT NO. _____, RECORDED PLAT _____		
5. PRIVATE CLAIMS _____		

LIBER **5 PC 284**
FILED

AUG 27 3 47 PM '79
REGISTER OF DEEDS
Paula Johnson
INGHAM COUNTY, MICH

REGISTER OF DEEDS STAMP AND FILING NUMBER

I, Larry A. Bryan, do hereby certify that under requirements of P.A. 74, Michigan P.A. of 1970, the corner points mentioned in lines 1 and 2 above were, in a field survey on June 20, 1979, established, re-established, monumented, re-monumented, recovered or restored as expressed below and in conformance with regulations and rules therefore as required in the current manual of survey instructions of the United States Department of the Interior, Bureau of Land Management or by a decree of a court of law. Furthermore, that the corner points mentioned in lines 3, 4 and 5 above were, in a field survey on _____, 19____, found, recovered, restored, established or re-established as expressed below and in conformance with the rules of the Michigan State Board of Registration for Land Surveyors or, by a Decree of a Court of law:

A. Description of original monument and accessories and/or subsequent restoration:
B-3 Post set in original Government Survey by Joseph Wampler, circa March-April, 1826.

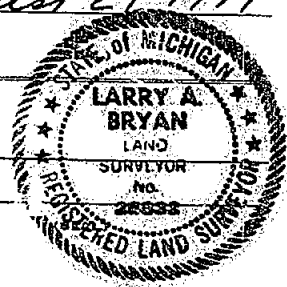
B. Description of corner evidence found and/or method applied in restoring or re-establishing corner:
B-3 Found large anchor post on East-West fence line. Measured East and West in close accord with G.L.O. distances.

C. Description of monument for corner and accessories established to perpetuate locating the position of the corner:
B-3 North 1/4 corner of Section 7, T4N, R2E
Set 1/2" iron bar with cap at base of anchor post.
Set nail and tag, R.L.S. #25832, South side of 6" Cherry, East, 5.00'
Set nail and tag, R.L.S. #25832, North side of 5" Thornapple, S70°E, 18.04'
Set nail and tag, R.L.S. #25832, North side of 8" Elm, S75°W, 18.87'

SIGNED BY Larry A. Bryan DATE August 24, 1979
SURVEYOR'S MICHIGAN REGISTRATION NO. 25832

FOR STATE AND UNITED STATES AGENCIES:

SIGNED BY _____ DATE _____
CHIEF OF SURVEY PARTY
APPROVED AND SIGNED BY _____ DATE _____
MICHIGAN REGISTERED LAND SURVEYOR



SURVEYOR'S MICHIGAN REGISTRATION NO. _____