

LAND CORNER RECORDATION CERTIFICATE

FILING REQUIREMENT OF ACT 74, MICH. P.A. 1970

4 K 204

| FOR CORNERS OF--: | LOCATED IN--: | CORNER CODE NUMBER |
|--------------------------------------|--|--------------------|
| 1. PUBLIC LAND SURVEY | 1 4 N R 2 1 | A-3 |
| 2. PROPERTY CONTROLLING IN SECTION | Pr 1 7 1 4 N R 2 1 | A-4 |
| 3. MISCELLANEOUS PROPERTY IN SECTION | 1 N R 1 | |
| 4. LOT NO. | RECORDED PLAT | |
| 5. PRIVATE CLAIMS | | |

FILED

MAY 25 11 24 AM '78

REGISTER OF DEEDS

Paul Johnson

INGHAM COUNTY, MICH.

REGISTER OF DEEDS STAMP AND FILING NUMBER

I, A. Lee Padison do hereby certify that under requirements of P.A. 74 Michigan P.A. of 1970 the corner points mentioned in lines 1 and 2 above (identified with circles on index code diagram - over) were, in a field survey on May 10, 1972, ~~established, re-established, monumented, re-monumented,~~ recovered or restored as expressed below and in conformance with regulations and rules therefore as required in the current manual of survey instructions of the United States Department of the Interior, Bureau of Land Management or by a decree of a court of law. ~~Furthermore, that the corner points mentioned in lines 1, 2 and 3 above were in a field survey on 19~~ found, recovered, restored, established or re-established as expressed below and in conformance with the rules of the Michigan State Board of Registration for Land Surveyors or, by a Decree of a Court of law:

A. Description of original monument and accessories and or subsequent restoration:

Surveyed in April 1826 by Joseph Hampler

B. Description of corner evidence found and or method applied in restoring or re-establishing corner:

A-3 NW Corner Prl. Sec. 7, T.4 N., R.1 E.

Found in place 1 inch iron pipe located in the center of Shaftsbury Road about 4 inches below the road surface. In line with the property line fence east.

C. Description of monument for corner and accessories established to perpetuate locating the position of the corner

witnesses established for the monument found at A-3

East 33.0 ft. 1 inch iron pipe set in the fence line east
 N. 43 E. 41.10 ft. to a 10d nail in the N. base 30 inch white oak.
 S. 72 30 E. 29.97 ft. to a 10d nail in N. base 24 inch s. maple.
 S. 54 W. 31.82 ft. to a 10d nail in N. base power pole.

SIGNED BY *A. Lee Padison* DATE May 24, 1978

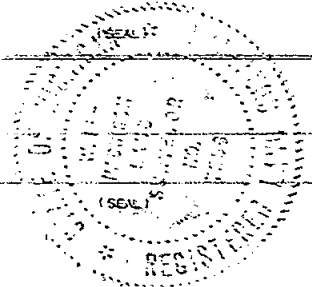
SURVEYOR'S MICHIGAN REGISTRATION NO. 7256

FOR STATE AND UNITED STATES AGENCIES:

SIGNED BY _____ DATE _____
CHIEF OF SURVEY PARTY

APPROVED AND SIGNED BY _____ DATE _____
MICHIGAN REGISTERED LAND SURVEYOR

SURVEYOR'S MICHIGAN REGISTRATION NO. _____



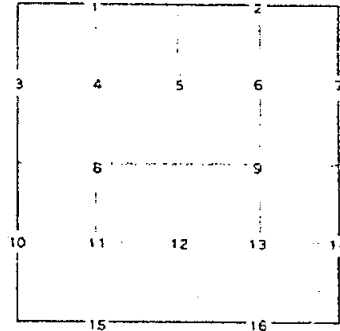
CORNER NUMBERING CODE DIAGRAMS FOR IDENTIFYING LAND CORNER RECORDATIONS AND INDEXING

FOR PUBLIC LAND SURVEY CORNERS IN THE T. 4 N. R. 2 E (MENTIONED OVER)

| | A | B | C | D | E | F | G | H | I | J | K | L | M |
|----|----|---|----|---|----|---|----|---|----|---|----|---|---|
| 2 | 6 | | 5 | | 4 | | 3 | | 2 | | 1 | | |
| 3 | 7 | | 8 | | 9 | | 10 | | 11 | | 12 | | |
| 4 | | | | | | | | | | | | | |
| 5 | | | | | | | | | | | | | |
| 6 | 18 | | 17 | | 16 | | 15 | | 14 | | 13 | | |
| 7 | | | | | | | | | | | | | |
| 8 | 19 | | 20 | | 21 | | 22 | | 23 | | 24 | | |
| 9 | | | | | | | | | | | | | |
| 10 | 30 | | 29 | | 28 | | 27 | | 26 | | 25 | | |
| 11 | | | | | | | | | | | | | |
| 12 | 31 | | 32 | | 33 | | 34 | | 35 | | 36 | | |
| 13 | | | | | | | | | | | | | |

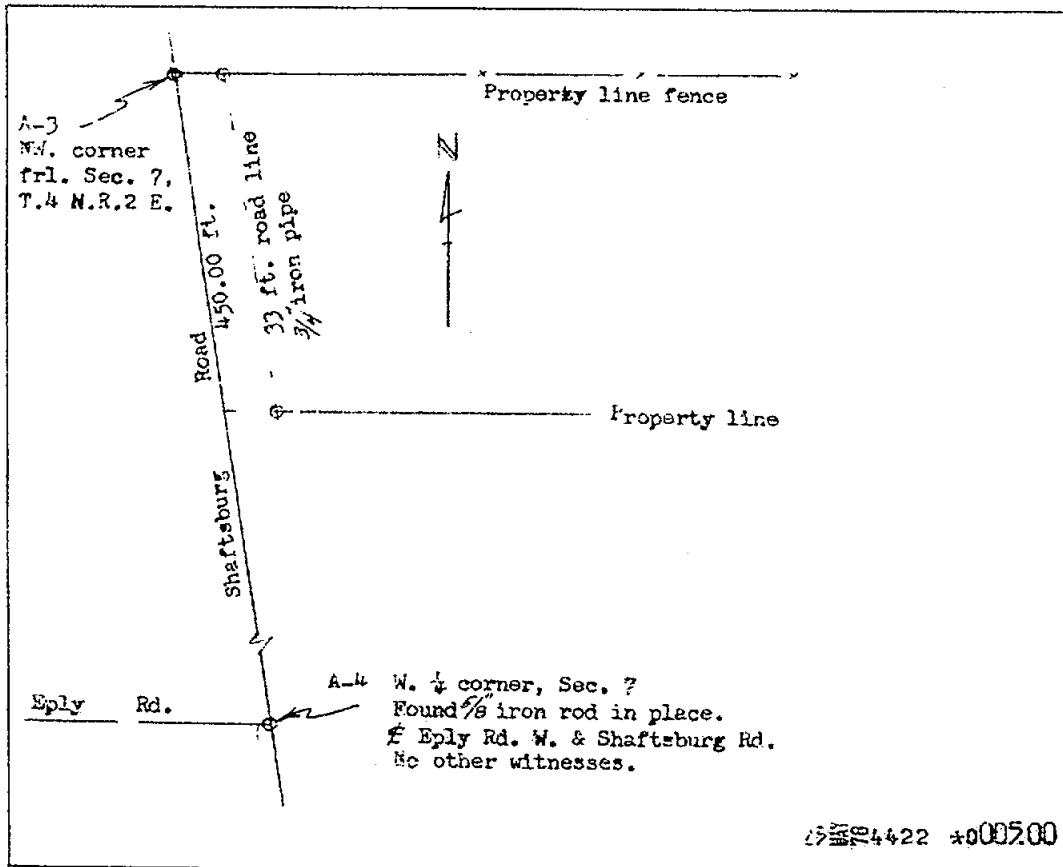
Apply letter prefix for corner points encircled above for identifying corner recordation numbers over.

FOR PROPERTY CONTROLLING AND MISC. PROPERTY CORNERS WITHIN THE SECTION (MENTIONED OVER AND EXCLUDE LOT CORNER)



1. Above coded numbers are positioned on 1/16 fractional lines of the section.
2. Township corner code numbers shall be applied to corners of above typical section not numbered.
3. Miscellaneous property corners within a section, at points other than numbered above, shall be referenced to at least two of above corner code numbers.
4. Private claim corners to be tied to rectangular land corners if possible - sketch required below.

EXPLANATORY SKETCH IF NECESSARY -- BELOW



LAND CORNER RECORDATION CERTIFICATE

FILING REQUIREMENT OF ACT 74, MICH. P.A. 1970

North 1/4 Corner Section 7 Locke Twp.

| FOR CORNERS OF-- | LOCATED IN-- | CORNER CODE NUMBER |
|---------------------------------------|-----------------|--------------------|
| 1. PUBLIC LAND SURVEY | T. 4 N. R. 2 E. | B-3 |
| 2. PROPERTY CONTROLLING IN SECTION | T. S. R. E. | |
| 3. MISCELLANEOUS PROPERTY IN SECTION | T. S. R. E. | |
| 4. LOT NO. _____, RECORDED PLAT _____ | | |
| 5. PRIVATE CLAIMS _____ | | |

LIBER 5 PG 284

FILED

AUG 27 3 47 PM '79

REGISTER OF DEEDS
Paula Johnson
INGHAM COUNTY, MICH

REGISTER OF DEEDS STAMP AND FILING NUMBER

I, Larry A. Bryan, do hereby certify that under requirements of P.A. 74, Michigan P.A. of 1970, the corner points mentioned in lines 1 and 2 above were, in a field survey on June 20, 1979, established, re-established, monumented, re-monumented, recovered or restored as expressed below and in conformance with regulations and rules therefore as required in the current manual of survey instructions of the United States Department of the Interior, Bureau of Land Management or by a decree of a court of law. Furthermore, that the corner points mentioned in lines 3, 4 and 5 above were, in a field survey on _____, 19____, found, recovered, restored, established or re-established as expressed below and in conformance with the rules of the Michigan State Board of Registration for Land Surveyors or, by a Decree of a Court of law:

A. Description of original monument and accessories and/or subsequent restoration:
B-3 Post set in original Government Survey by Joseph Wampler, circa March-April, 1826.

B. Description of corner evidence found and/or method applied in restoring or re-establishing corner:
B-3 Found large anchor post on East-West fence line. Measured East and West in close accord with G.L.O. distances.

C. Description of monument for corner and accessories established to perpetuate locating the position of the corner:

B-3 North 1/4 corner of Section 7, T4N, R2E
Set 1/2" iron bar with cap at base of anchor post.
Set nail and tag, R.L.S. #25832, South side of 6" Cherry, East, 5.00'
Set nail and tag, R.L.S. #25832, North side of 5" Thornapple, S70°E, 18.04'
Set nail and tag, R.L.S. #25832, North side of 8" Elm, S75°W, 18.87'

SIGNED BY Larry A. Bryan DATE August 24, 1979

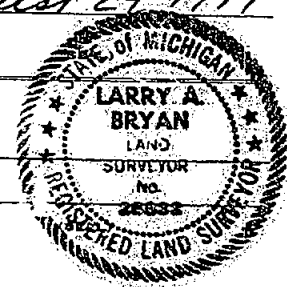
SURVEYOR'S MICHIGAN REGISTRATION NO. 25832

FOR STATE AND UNITED STATES AGENCIES:

SIGNED BY _____ DATE _____
CHIEF OF SURVEY PARTY

APPROVED AND SIGNED BY _____ DATE _____
MICHIGAN REGISTERED LAND SURVEYOR

SURVEYOR'S MICHIGAN REGISTRATION NO. _____



LAND CORNER RECORDATION CERTIFICATE

FILING REQUIREMENT OF ACT 74, MICH. P.A. 1970

N 1/4 CORNER SECTION 18, T4N, R2E, LOCKE TWP.
INGHAM COUNTY

LIBER 2 PG 5 - 4

| FOR CORNERS OF-- | LOCATED IN-- | CORNER CODE NUMBER |
|---------------------------------------|-------------------|--------------------|
| 1. PUBLIC LAND SURVEY | T. 4 N. E. R. 2 | B-5 |
| 2. PROPERTY CONTROLLING IN SECTION | T. N. S. R. E. W. | |
| 3. MISCELLANEOUS PROPERTY IN SECTION | T. N. S. R. E. W. | |
| 4. LOT NO. _____, RECORDED PLAT _____ | | |
| 5. PRIVATE CLAIMS _____ | | |

FILED
JUL 26 4 14 PM '72
REGISTER OF DEEDS
Carol M. Lewis
INGHAM COUNTY, MICH.
REGISTER OF DEEDS STAMP AND
FILING NUMBER

I, Clyde K. Stephens do hereby certify that under requirements of P.A. 74, Michigan P.A. of 1970, the corner points mentioned in lines 1 and 2 above (identified with circles on index code diagram—over) were, in a field survey on July 7, 1972, established, re-established, monumented, re-monumented, recovered or restored as expressed below and in conformance with regulations and rules therefore as required in the current manual of survey instructions of the United States Department of the Interior, Bureau of Land Management or by a decree of a court of law. Furthermore, that the corner points mentioned in lines 3, 4 and 5 above were, in a field survey on _____ 19____, found, recovered, restored, established or re-established as expressed below and in conformance with the rules of the Michigan State Board of Registration for Land Surveyors or, by a Decree of a Court of law:

A. Description of original monument and accessories and/or subsequent restoration:
Original monument and accessories obliterated.

B. Description of corner evidence found and/or method applied in restoring or re-establishing corner:
A railroad spike was set 2640.0 feet from the NE. corner of the section, in the centerline of the section line road (Haslett Road).

C. Description of monument for corner and accessories established to perpetuate locating the position of the corner:
The railroad spike set at the N1/4 corner was witnessed with the following;

Survey tag in the S. side of a utility pole N68°47'W 170.05 feet.
Survey tag in the N. side of a 24 inch Wild Cherry S87°19'W 170.0 feet.
S5°12'E 113.3 feet to the NW. corner of a frame garage.
The bearing of the section line east of the corner is S89°57'E.
The bearing of the section line west of the corner is S89°48'W.
The bearing of the 1/4 line south of the corner is S4°15'53"E.

SIGNED BY *Clyde K. Stephens* DATE July 25, 1972

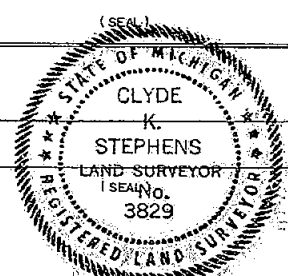
SURVEYOR'S MICHIGAN REGISTRATION NO. 3829

FOR STATE AND UNITED STATES AGENCIES:

SIGNED BY _____ DATE _____
CHIEF OF SURVEY PARTY

APPROVED AND SIGNED BY _____ DATE _____
MICHIGAN REGISTERED LAND SURVEYOR

SURVEYOR'S MICHIGAN REGISTRATION NO. _____



LAND CORNER RECORDATION CERTIFICATE

FILING REQUIREMENT OF ACT 74, MICH. P.A. 1970

West 1/4 Corner Section 7 Locke Twp.

| FOR CORNERS OF-- | LOCATED IN-- | CORNER CODE NUMBER |
|--|---|--------------------|
| 1. PUBLIC LAND SURVEY _____ | T. <u>4</u> N. <u>X</u> , R. <u>2</u> E. <u>X</u> | <u>A-4</u> |
| 2. PROPERTY CONTROLLING IN SECTION _____ | T. _____ N. _____, R. _____ E. _____ | _____ |
| 3. MISCELLANEOUS PROPERTY IN SECTION _____ | T. _____ N. _____, R. _____ E. _____ | _____ |
| 4. LOT NO. _____, RECORDED PLAT _____ | | |
| 5. PRIVATE CLAIMS _____ | | |

LIBER 5 PG 282

FILED

AUG 27 3 45 PM '79

REGISTER OF DEEDS

Paula Johnson

INGHAM COUNTY, MICH.

REGISTER OF DEEDS STAMP AND FILING NUMBER

I, Larry A. Bryan, do hereby certify that under requirements of P.A. 74, Michigan P.A. of 1970, the corner points mentioned in lines 1 and 2 above were, in a field survey on June 20, 1979, established, re-established, monumented, re-monumented, recovered or restored as expressed below and in conformance with regulations and rules therefore as required in the current manual of survey instructions of the United States Department of the Interior, Bureau of Land Management or by a decree of a court of law. Furthermore, that the corner points mentioned in lines 3, 4 and 5 above were, in a field survey on _____, 19____, found, recovered, restored, established or re-established as expressed below and in conformance with the rules of the Michigan State Board of Registration for Land Surveyors or, by a Decree of a Court of law:

A. Description of original monument and accessories and/or subsequent restoration:

A-4 No record of corner being established in original Government Survey.

B. Description of corner evidence found and/or method applied in restoring or re-establishing corner:

A-4 Set corner midway between Northwest and Southwest corners of Section 7 in close accord with G.L.O. distances on existing Township line. Corner falls in the centerline of Shaftsbury Road and 25' North of the centerline of Eply Road to West. Corner is 25.00' North of the East 1/4 corner of Section 12, T4N, R1E, as recorded in Liber 4, page 316.

C. Description of monument for corner and accessories established to perpetuate locating the position of the corner:

A-4 West 1/4 corner of Section 7, T4N, R2E
 Set 1/2" iron bar with cap at above location
 Set nail and tag, R.L.S. #25832, West side of 12" Elm, N15°E, 130.90'
 Found nail and tag, North side of power pole, S30°W, 58.70'
 Found 1/2" bar, East 1/4 corner of Section 12, T4N, R1E, South, 25.00'

SIGNED BY Larry A. Bryan DATE August 24, 1979

SURVEYOR'S MICHIGAN REGISTRATION NO. 25832

FOR STATE AND UNITED STATES AGENCIES:

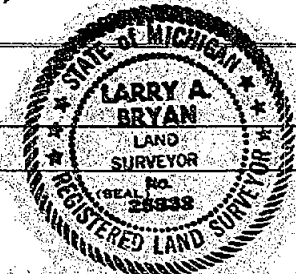
SIGNED BY _____ DATE _____

CHIEF OF SURVEY PARTY

APPROVED AND SIGNED BY _____ DATE _____

MICHIGAN REGISTERED LAND SURVEYOR

SURVEYOR'S MICHIGAN REGISTRATION NO. _____



1664

FORM APPROVED BY MICHIGAN STATE BOARD OF REGISTRATION, JAN. 28, 1971
 REVISED MAY 14, 1975

MAY PLACE SKETCH ON BACK OR ATTACHED SHEET