

Reg. to: Enger Surveying & Engineering Co.

File Name: A:\REESER\S4\282.DAT

Job: REESER AUCTION SEC 5&6 LOCKE
 T4N R2E
 INGHAM CO MI
 DISK 33-14 BOOK 33-21

By: DLC 21 APRIL 95

Point	Direction	Distance	Northing	Easting	Elevation
List					
2	L01-11 RP 1/2" BAR		19768.2753	16974.7262	0.00
4	L01-11 RP 1/2" BAR		19727.4820	16489.5180	0.00
5	L01-12 RP 1/2" BAR		20120.2725	16978.7311	0.00
6	L01-01C5		19779.1240	14372.3453	0.00
7	L01-02 D-4		22372.4400	16832.9575	0.00
8	L01-13 RP 1/2" BAR		24308.6663	16741.6006	0.00
9	L01-14 D-3 CONC MON&C. 18998		24970.9942	16685.2590	0.00
10	L01-14		28760.1099	16477.5155	0.00
13	L01-16		30161.4947	16391.2065	0.00
14	L01-16 1/2" BAR		27581.3826	18994.9879	0.00
15	L01-17 1/2" BAR		31423.1546	16326.8552	0.00
16	L01-17		30757.2416	13842.1806	0.00
17	L01-18		31433.3075	13023.6972	0.00
18	L01-18 1/2" B @ MVR C13		31439.5586	13619.6245	0.00
19	L01-19 1/2" BAR		31442.2160	11821.0408	0.00
20	L01-19 A-1 STD SHIA. CO MON		31438.9234	9274.3764	0.00
21	L01-20		27791.1061	9595.0358	0.00
22	L01-20 1/2" BAR		27738.5426	11916.9009	0.00
23	L01-21		26489.2701	9678.3605	0.00
24	L01-21		25633.5834	9753.3667	0.00
25	L01-22		22990.2310	9971.5403	0.00
26	L01-22		19858.4242	10222.9375	0.00
27	L01-23		19837.3851	12628.9732	0.00
32	L01-27 C2 FD STANDARD B&C		27692.1185	13917.2665	0.00
34	L01-29 3/4"B&PA345C @FE.COE2		27563.2095	19144.4874	0.00
35	L01-29-D1? FD PA345 B&C		31449.0289	16313.1087	0.00
36	L01-30 1/2" B.		31448.8926	17860.8443	0.00
37	L01-27 C2 FD 3/4" PA345 B&C		27692.1596	13917.5333	0.00
38	L01-31 1/2"B.		31455.5335	18567.4346	0.00
39	L01-31 1/2"B.		31452.4718	18745.1813	0.00
40	L01-32 1/2" B.		31461.0553	18916.7867	0.00
41	L01-30 1/2" B.		31448.9302	18079.5443	0.00
43	L01-33 1/2" B.@ FE COR E13		31447.9091	18898.9473	0.00

Reg. to: Enger Surveying & Engineering Co.
File Name: A:\REESER\S4\282.DAT

Job: REESER AUCTION SEC 5&6 LOCKE
T4N R2E
INGHAM CO MI
DISK 33-14 BOOK 33-21

By: DLC 21 APRIL 95

Point	Direction	Distance	Northing	Easting	Elevation
50	3321-19 RP SET 60D SPK		27707.2913	13490.5406	0.00
51	3321-19 B2 FD 1/2" B&C		27752.2484	11307.3009	0.00
52	3321-19 60D SPK @ 1/8 FEN CO		29021.1218	13842.8994	0.00
53	3321-20 A-2 SET 3/4" PIPE		27792.2436	9583.4917	0.00
55	3321-21 POL. 1/2" B @ C13		31438.6898	13630.2691	0.00
56	3321-21 PA 345 B&C @ C1		31439.1884	13728.9238	0.00
57	3321-22 1/2"B. POLARIS B-1		31438.4880	11107.8305	0.00
58	3321-22 1/2"B. MVR B-13		31438.8660	11026.0279	0.00
59	3321-22 1/2"B. POLARIS B-13		31438.5021	11008.8393	0.00
60	3321-22 1/2"B&C 25832 @NWROW		31405.6084	11264.3431	0.00
61	3321-22 REESER FENCE POST		31399.8066	11607.8786	0.00
62	3321-22 REESER FENCE POST		31417.5483	12903.9199	0.00
63	3321-27 POL SET 60D SPK		27626.8025	16544.7497	0.00
64	3321-27 FD 3/4"B.&PA345CAP		27622.7702	16533.8732	0.00
65	3321-27STONE@ FEN COR D-2?		27626.8526	16533.5499	0.00
66	3321-28 RP 1/2" B. CL LANE		31402.4210	16325.1348	0.00
67	3321-28 FD 1/2"B. POLAR. D13		31439.1683	16250.7351	0.00
68	3321-28 FD 1/2"B&C 25832 B13		31448.7156	16259.0097	0.00
69	3321-28 FD 3/4"B.&PA345CAP		31436.9055	16316.4147	0.00
70	3321-28 FD1/2"B&C25832 D-1		31448.7213	16314.0017	0.00
71	3321-28 60D 19.5' W. OF DRAI		30891.3278	14699.3087	0.00
72	3321-28 60D 19.5' W. OF DRAI		30432.4267	14771.5303	0.00
73	3321-29 RP SET 60D SPK FIELD		25306.5952	11253.8838	0.00
74	3321-30 B-3 1/2" B & MUT. CA		25112.5554	11450.8434	0.00
75	3321-27 60D@1/8COR FEN POST		28953.8045	16447.0235	0.00
76	3321-32 FD 1/2"B&C@SW COR 4		29070.7933	11461.9236	0.00
78	3321-34-rpset		29053.4906	13103.0305	0.00
81			30816.0670	14470.9194	0.00
82	set 5/8"b&c 2' from h2o		31084.8589	14456.6579	0.00
85	3321-38 RP SET 6" SPK		31317.4874	14038.6694	0.00
86	3321-38 RP SET 6" SPK		31315.8156	14200.2658	0.00
87	3321-38 PT ON W. SIDE LAKE		31441.6504	14223.2687	0.00
88	3321-38 PT ON E. SIDE LAKE		31443.1758	14662.0755	0.00

27627.63
27622.77
4.9

Reg. to: Enger Surveying & Engineering Co.

File Name: A:\REESER\S4\282.DAT

Job: REESER AUCTION SEC 5&6 LOCKE
 T4N R2E
 INGHAM CO MI
 DISK 33-14 BOOK 33-21

By: DLC 21 APRIL 95

Point	Direction	Distance	Northing	Easting	Elevation
90	N&T18989 W. ROOT 29" HICKORY		31171.0694	13750.4120	0.00
91	N&T18989 E. SIDE 20" HICK		31316.0440	13739.0372	0.00
92	N&T18998 E. SIDE 24" HICK		31582.2440	13591.8163	0.00
150	SET PT SS4 SE COR PAR 1		30666.3530	12296.9209	0.00
151	OBSERVED LOC OF 202		31439.8818	13718.6239	0.00
200	INT OCC SEC LI BET SEC 5&6		31439.3855	13706.9823	0.00
202	SEC COR COMMON TO SEC'S 5&6		31439.9020	13718.6239	0.00
203	INT 1/4 LINES SEC 5		27627.6355	16532.9992	0.00
204			31439.2624	13707.0979	0.00
205	INT OCC 1/8 LI & SEC LINE		29021.0157	13847.0050	0.00
206	INT OCC. 1/8 LI & NS 1/4 LI5		28953.5464	16457.0074	0.00
207	PT 1980' E OF W LI SEC 6 PER		27959.4810	11556.4163	0.00
208	NE COR W 1980' SEC 6		31439.2139	11261.4525	0.00
209	SE COR W 1980' SEC 6		29071.3356	11462.1686	0.00
210			28760.1043	16477.4938	0.00
211			31439.1914	11107.8305	0.00
212			31439.1794	11026.0279	0.00
213			31439.1769	11008.8393	0.00
214	NW COR PARC. 3		31439.6730	13652.6243	0.00
215	NW COR PARCEL 3		31439.5122	13302.6245	0.00
216	NW COR PARC 5		31439.4611	12952.6245	0.00
217	SW COR PARC 5		29037.1968	13080.1234	0.00
218	NW COR PARC 1		31439.2650	11611.4525	0.00
219	NW COR PARC 2		31439.3162	11961.4525	0.00
220			31196.8078	12965.5032	0.00
221			31196.6640	11982.0212	0.00
222	NE COR PARC 1 ON S LINE PAR2		31196.7035	12252.0212	0.00
223			31196.6128	11632.0212	0.00
224			30666.2406	12296.9865	0.00
225			30666.1499	11676.9866	0.00
226	SW COR PARCEL 3		30978.1616	13327.1104	0.00
227	INT S LI PARC 3&LI 19.5'W DR		30982.8722	14684.9014	0.00
228	PT 19.5 W OF DR @ MOUTH		31138.2881	14660.4421	0.00

Reg. to: Enger Surveying & Engineering Co.

File Name: A:\REESER\S4\282.DAT

Job: REESER AUCTION SEC 5&6 LOCKE

T4N R2E

INGHAM CO MI

DISK 33-14 BOOK 33-21

By: DLC 21 APRIL 95

Point	Direction	Distance	Northing	Easting	Elevation
229	PT 50 ' W OF DRAIN AT MOUTH		31138.1823	14629.9423	0.00
230	SE COR PARC 3		30982.0993	14462.1036	0.00
231	NE COR PARC 3		31442.3967	14437.6735	0.00
232			31406.2139	11261.4573	0.00
233	NW ROW PARCEL 4		31406.2143	11264.2498	0.00
234	NW ROW PARC 1		31406.2654	11614.2498	0.00
235	NW ROW PARC 2		31406.3166	11964.2498	0.00
236	NW ROW PARCEL 5		31406.4613	12954.3759	0.00
237	NW ROW PARCEL 5		31406.5125	13304.3759	0.00
238			29037.1964	13080.1248	0.00
239			30984.6457	14463.0935	0.00
240			30433.2040	14776.4695	0.00
500			5000.0000	5000.0000	0.00
501	CK DESC 1		5000.0509	5350.0000	0.00
502	CK DESC 1		4757.4011	5370.5690	0.00
503	CK DESC 1		4757.4404	5640.5690	0.00
504	CK DESC 1		4226.9729	5685.5358	0.00
505	CK DESC 1		4226.8827	5065.5358	0.00
506	CK DESC 1		5000.0000	5000.0000	0.00
507	CK DESC 2		5000.1442	5991.1700	0.00
508			4757.4857	6004.0488	0.00
509	CK DESC 2		4757.3426	5020.5688	0.00
510			4999.9924	4999.9998	0.00
511	CK DESC 3		5000.0461	5317.0000	0.00
512	CK DESC 3		5000.3898	5415.9994	0.00
513	CK DESC 3		5002.8858	6135.0451	0.00
514	CK DESC 3		4542.5836	6159.4751	0.00
515	CK DESC 3		4538.6437	5024.4819	0.00
516	CK DESC 3		4999.9944	4999.9963	0.00
517	CK DESC 4		5000.0509	5350.0000	0.00
518	CK DESC 4		4226.9336	5415.5358	0.00
519	CK DESC 4		4227.0238	6035.5358	0.00
520	CK DESC 4		4757.4913	5990.5690	0.00

Job: REESER AUCTION SEC 5&6 LOCKE
 T4N R2E
 INGHAM CO MI
 DISK 33-14 BOOK 33-21

By: DLC 21 APRIL 95

Point	Direction	Distance	Northing	Easting	Elevation
Start					
18	L01-18 1/2" B @ MVR C13		31439.5586	13619.6245	0.00
IN	N 89 48'04" E	99.000			
202	SEC COR COMMON TO SEC'S 5&6		31439.9020	13718.6239	0.00
IN	N 89 48'19" E	2595.393			
70	3321-28 FD1/2"B&C25832 D-1		31448.7213	16314.0017	0.00
IN	S 89 48'19" W	2595.393			
202	SEC COR COMMON TO SEC'S 5&6		31439.9020	13718.6239	0.00
IN	S 3 02'17" E	3753.017			
37	L01-27 C2 FD 3/4" PA345 B&C		27692.1596	13917.5333	0.00
IN	N 32 32'08" E	4455.874			
70	3321-28 FD1/2"B&C25832 D-1		31448.7213	16314.0017	0.00
IN	S 89 58'55" E	2584.946			
43	L01-33 1/2" B. @ FE COR E13		31447.9091	18898.9473	0.00
IN	N 89 58'55" W	2584.946			
70	3321-28 FD1/2"B&C25832 D-1		31448.7213	16314.0017	0.00
IN	S 3 16'49" E	3827.356			
203	INT 1/4 LINES SEC 5		27627.6355	16532.9992	0.00
IN	N 4 06'05" W	3830.891			
68	3321-28 FD 1/2"B&C 25832 B13		31448.7156	16259.0097	0.00
IN	S 89 58'57" E	2639.938			
43	L01-33 1/2" B. @ FE COR E13		31447.9091	18898.9473	0.00
TR	S 89 58'57" E	31.100			
93	E-1 3/4" B&C PA345 PS28409		31447.8996	18930.0473	0.00
IN	S 3 09'35" E	3890.604			
34	L01-29 3/4"B&PA345C @FE.COE2		27563.2095	19144.4874	0.00
IN	N 88 35'12" W	2612.283			
203	INT 1/4 LINES SEC 5		27627.6355	16532.9992	0.00
IN	S 3 16'49" E	2661.001			
9	L01-14 D-3 CONC MON&C. 18998		24970.9942	16685.2590	0.00
IN	S 4 51'44" E	664.720			
8	L01-13 RP 1/2" BAR		24308.6663	16741.6006	0.00
IN	N 4 51'44" W	664.720			
9	L01-14 D-3 CONC MON&C. 18998		24970.9942	16685.2590	0.00
TR	S 88 25'29" E	2633.140			
11	L01-15 FD 1/2" B&C		24898.6081	19317.4038	0.00
TR	N 88 25'29" W	17.140			
94	E-3 3/4" B&C PA345 PS 28409		24899.0793	19300.2703	0.00
IN	N 88 25'29" W	2616.000			
9	L01-14 D-3 CONC MON&C. 18998		24970.9942	16685.2590	0.00
IN	S 88 25'29" E	2616.000			
94	E-3 3/4" B&C PA345 PS 28409		24899.0793	19300.2703	0.00
IN	N 3 20'47" W	2668.681			

Reg. to: Enger Surveying & Engineering Co.

File Name: A:\REESER\54\282.DAT

Job: REESER AUCTION SEC 5&6 LOCKE

T4N R2E

INGHAM CO MI

DISK 33-14 BOOK 33-21

By: DLC 21 APRIL 95

Point	Direction	Distance	Northing	Easting	Elevation
34	L01-29 3/4"B&PA345C @FE.COE2		27563.2095	19144.4874	0.00
IN	S 3 20'47" E	2668.681			
94	E-3 3/4" B&C PA345 PS 28409		24899.0793	19300.2703	0.00
IN	S 3 22'35" E	5261.650			
1	L01-02 E-5? 1/2" B&C IN MB		19646.5628	19610.1547	0.00
IN	N 26 32'42" W	13183.057			
202	SEC COR COMMON TO SEC'S 5&6		31439.9020	13718.6239	0.00
IN	S 36 26'11" E	4738.574			
203	INT 1/4 LINES SEC 5		27627.6355	16532.9992	0.00
IN	S 3 16'49" E	2661.001			
9	L01-14 D-3 CONC MON&C. 18998		24970.9942	16685.2590	0.00
IN	N 3 16'49" W	2661.001			
203	INT 1/4 LINES SEC 5		27627.6355	16532.9992	0.00
IN	N 88 35'16" W	2616.527			
32	L01-27 C2 FD STANDARD B&C		27692.1185	13917.2665	0.00

File: 282.DAT

Session terminated at 2:56 PM on 10-03-1995

Project: REMON

Fri Dec 2 14:14:20 1994

Point statistics:

Starting point number: 1
 Max point number used: 201
 Min point number used: 1
 Current point number: 60

Current Coordinate Listing (All)

Point	Northing	Easting	Elevation	Description
1	19646.5665	19610.1547	.	
2	19768.2759	16974.7261	.	
3	19734.7086	16984.4823	.	
4	19727.4820	16489.5180	.	
5	20120.2731	16978.7349	.	
6	19779.1240	14372.3453	.	
7	22372.4358	16832.8908	.	
8	24308.6618	16741.5356	.	
9	24970.9873	16685.1955	.	
10	28760.1017	16477.4547	.	
11	24898.5957	19317.3415	.	
12	24887.9378	19506.3922	.	
13	30161.4865	16391.1471	.	
14	27581.3690	18994.9246	.	
15	31423.1490	16326.7983	.	
16	30757.2599	13842.1035	.	
17	31433.3352	13023.6190	.	
18	31439.0624	13619.5489	.	
19	31442.2867	11820.9498	.	
20	31438.9739	9274.2995	.	
21	27791.2531	9594.7733	.	
22	27738.5885	11916.6361	.	
23	26489.4133	9678.0393	.	
24	25633.6967	9752.6426	.	
25	22990.3332	9970.6736	.	
26	19858.5139	10221.9057	.	
27	19837.4098	12628.2357	.	
28	21436.1893	13922.4072	.	
29	22321.4342	14105.3476	.	
30	22413.3024	14214.6208	.	
31	22352.6044	19453.7431	.	
32	27692.1184	13917.2665	.	
33	25370.4971	11307.2727	.	
34	27563.1956	19144.4241	.	
35	31449.0289	16313.1087	.	
36	31448.8819	17860.7875	.	
37	31448.9188	18079.4850	.	
38	31455.5209	18567.3753	.	
39	31452.4592	18745.1215	.	
40	31461.0447	18916.7268	.	
41	31438.3774	18903.4687	.	
42	31438.7966	18872.4384	.	
43	31447.8984	18898.8876	.	
50	30161.3499	16388.7553	.	
51	25220.6719	11696.4570	.	
53	25248.7022	12682.8588	.	
54	25174.3586	12904.2181	.	
55	25238.8548	13216.8241	.	
56	25197.9846	13619.0831	.	
57	25177.1682	13810.1173	.	

Project: REMON

Fri Dec 2 14:14:24 1994

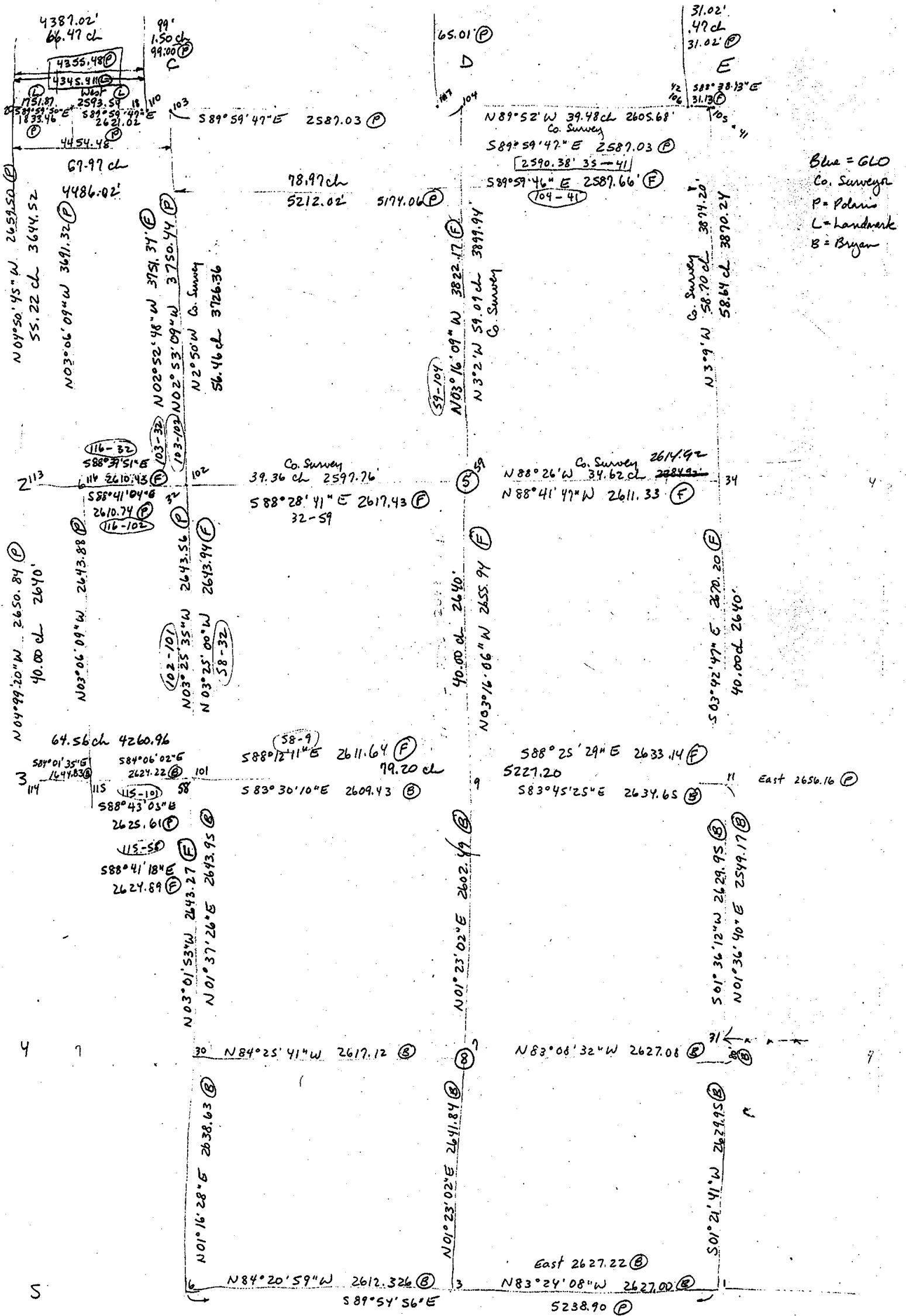
58	25052.8765	14074.8409	.	.
59	27622.6048	16533.7691	.	.
101	25054.2016	14075.5945	.	.
102	27693.0360	13917.5991	.	.
103	31438.7198	13728.7795	.	.
104	31438.5568	16315.8095	.	.
105	31438.3937	18902.8395	.	.
106	31438.3957	18871.8195	.	.
107	31438.5609	16250.7995	.	.
108	31438.8850	11107.7595	.	.
109	31438.8913	11008.7595	.	.
110	31438.7261	13629.7795	.	.
111	31438.9739	9274.2995	.	.
112	27792.5541	9583.4432	.	.
113	27768.4412	9585.4941	.	.
114	25151.0972	9806.2842	.	.
115	25112.9679	11450.6422	.	.
116	27752.9728	11307.5491	.	.
201	31438.9739	9274.2995	.	.

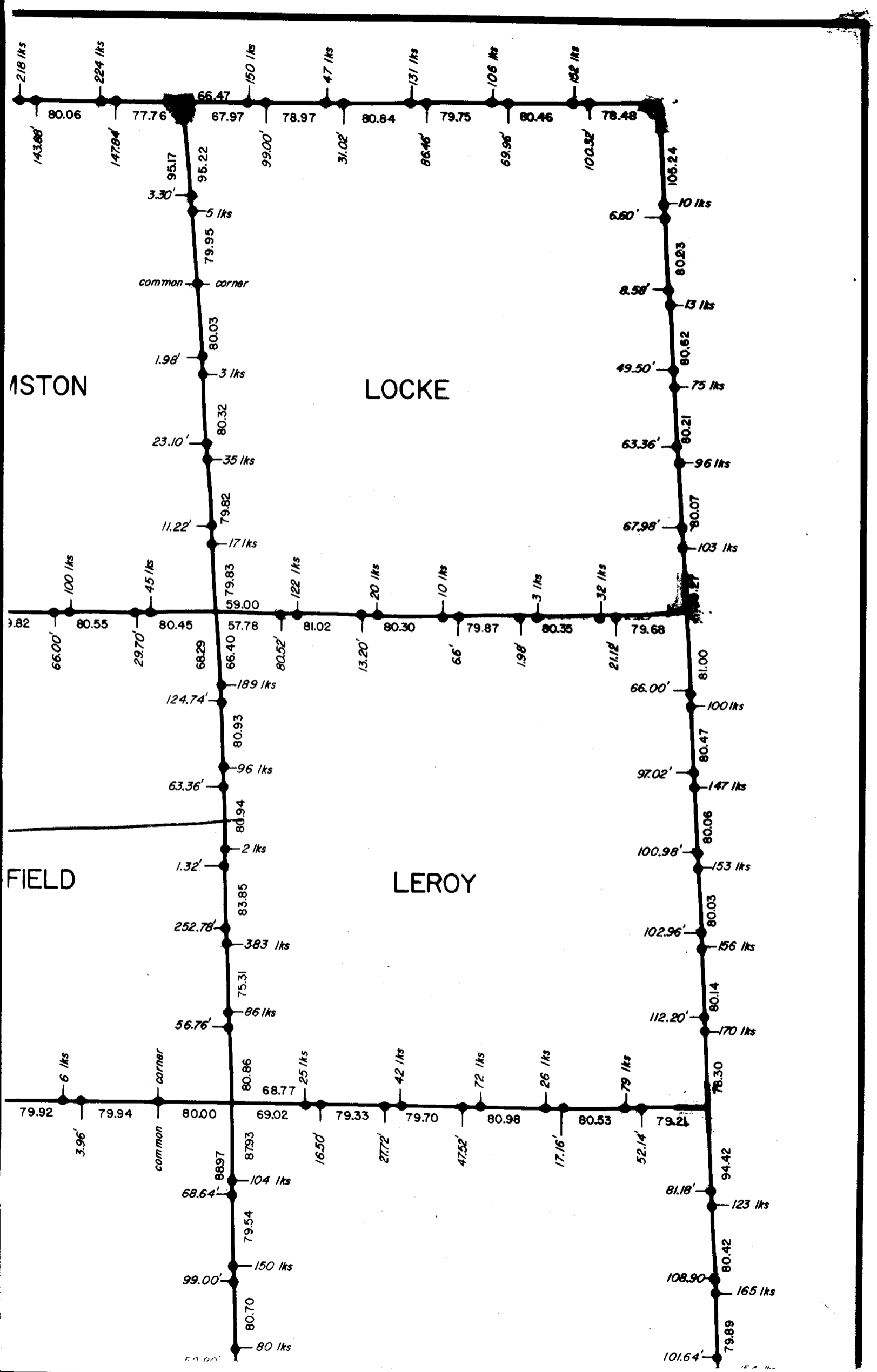
Pts 1-43 = Field Book pp. 11-33

Pts. 51(A), 53(B), 54(C), 55(D), 56(E), 57(F), 58(Sec Cor)
= Field Book pp 5-6

Pts. 101-116 = Sec Cors from Polaris Notes
(see Private Records)

LOCKE TWP.



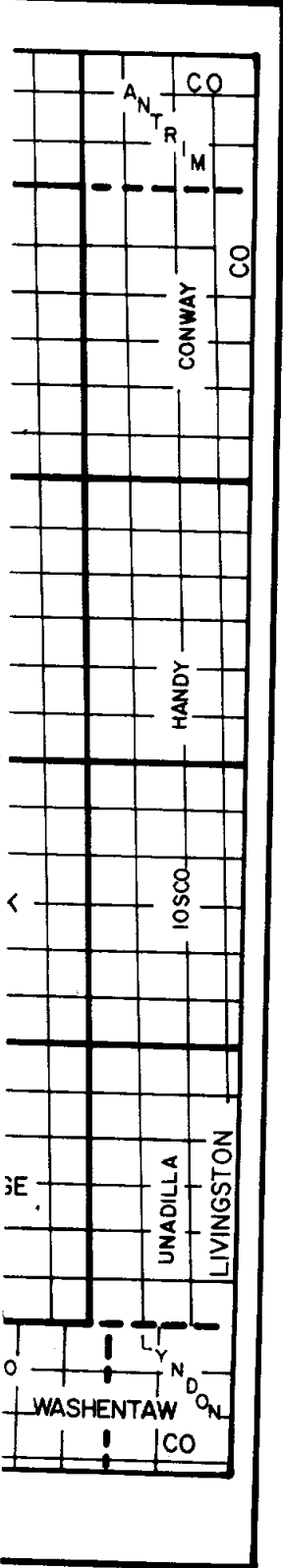


29.04' 79.76 44.88' 79.91 50' 80.55 14.52' 80.03 12.54' 80.19

17.10 chains

INGHAM COUNTY, MICHIGAN

CLOSING CORNER OFFSETS AND CALCULATED DISTANCES BETWEEN FALLING



FALLINGS ARE GIVEN IN
LINKS AND FEET

DISTANCES BETWEEN FALLING
ARE GIVEN IN CHAINS

NOTE: 1 CHAIN = 66 FEET
1 LINK = 0.66 FEET

The distances shown are from the original field notes
which are held by the Michigan State Department of Natural
Resources, Lands Division.

Prepared by the Ingham County
Survey and Remonumentation Project
1978 - 1979

under the supervision of
Polaris Associates, Inc.
Registered Land Surveyors
Mason, Michigan

	A	B
1		
2		6
3		
4		7
5		
6		18
7		
8		19
9		
10		30
11		
12		31
13		
	A	B