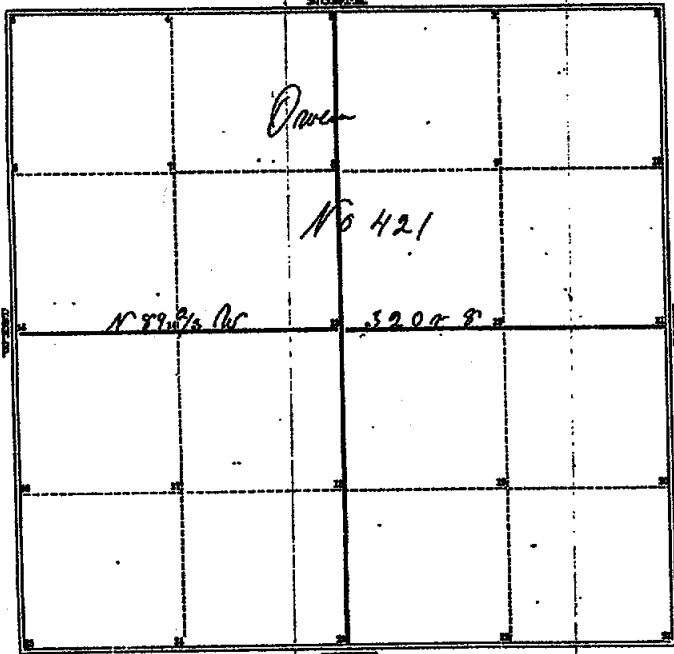


COUNTY SURV. YOR'S RECORD,

TOWN *Shaw* NORTH, RANGE *One* East, MERIDIAN OF MICHIGAN.

B4-pg 191

SEC. *One*



P. Note

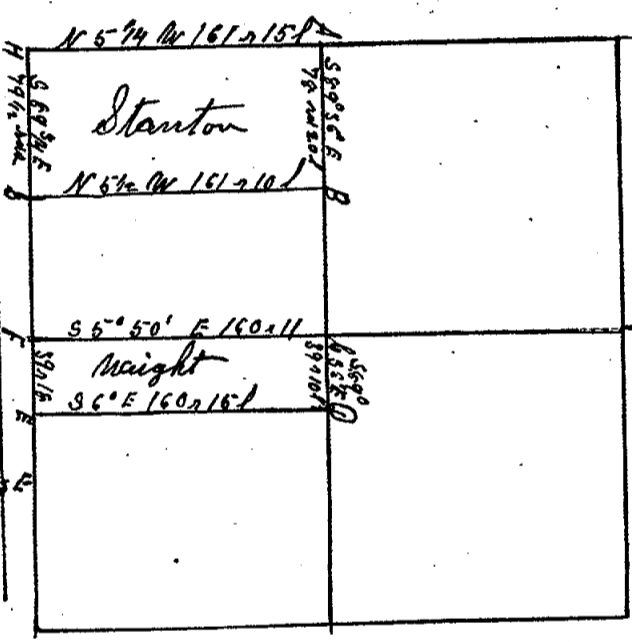
TOWN *Shaw* NORTH, RANGE *One* East, MERIDIAN OF MICHIGAN.

- 11 10 8 24 8 15 0
- D 1 Willow 6' N 42 1/2 W 5' 24
- 2
- 3
- 4 or Oak 11 5 45 8 15 1/2
- C 5 5 upon 36 S 79 W 2 1/2 25
- 6
- 7
- 8
- 9
- 10 Bush 11 N 5 1/2 W 33 1/2
- E 11 13 Oak 7 5 22 W 31 1/2
- 12
- 13
- 14 Bush 6 N 40 W 8
- F 15 upon 25 N 57 1/2 E 2 1/2
- 16
- 17
- 18
- 19
- 20
- 21

*Bound by the Town Meridian (No) 58
 Surveyed and Recorded for 20. 1844
 by A. Jackson for James Ingraham County*

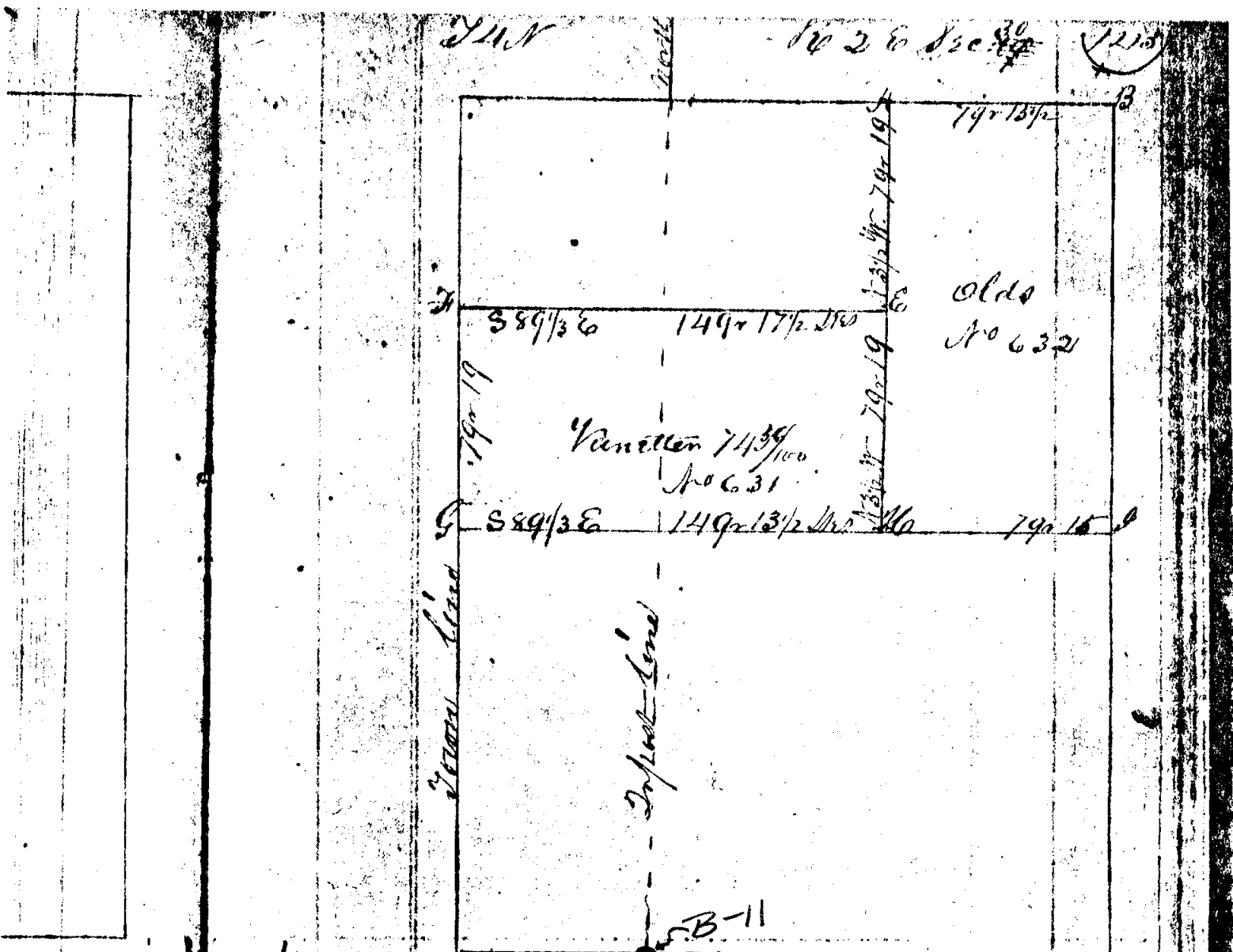
Surveyor's Field book #1

34 N. 2.6 Dec 52 Page 281 Ch. 2



- A 15 8 5/8 E 29
- B 15 8 5/8 E 29
- C 15 8 5/8 E 29
- D 15 8 5/8 E 29
- E 15 8 5/8 E 29
- F 15 8 5/8 E 29
- G 15 8 5/8 E 29
- H 15 8 5/8 E 29
- I 15 8 5/8 E 29
- J 15 8 5/8 E 29
- K 15 8 5/8 E 29
- L 15 8 5/8 E 29
- M 15 8 5/8 E 29
- N 15 8 5/8 E 29
- O 15 8 5/8 E 29
- P 15 8 5/8 E 29
- Q 15 8 5/8 E 29
- R 15 8 5/8 E 29
- S 15 8 5/8 E 29
- T 15 8 5/8 E 29
- U 15 8 5/8 E 29
- V 15 8 5/8 E 29
- W 15 8 5/8 E 29
- X 15 8 5/8 E 29
- Y 15 8 5/8 E 29
- Z 15 8 5/8 E 29

Run by James Macdonald
 Surveyed and recorded March 15th 1856
 H Jackson Co Surveyor



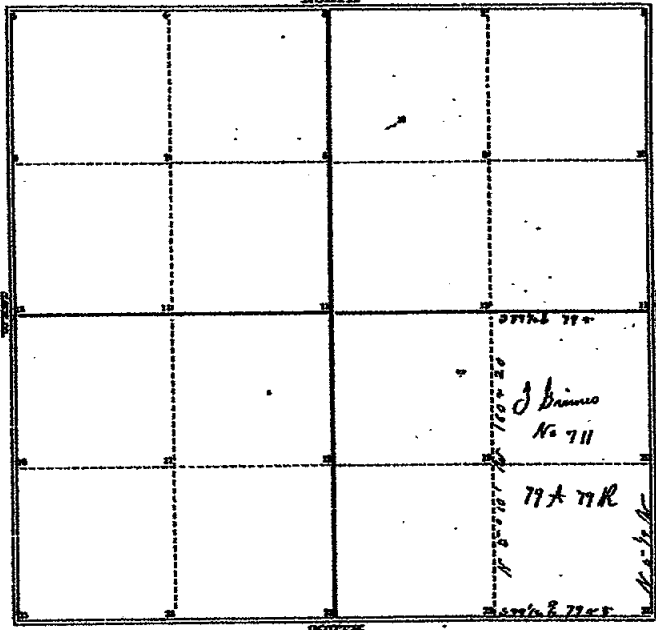
Ad. Oak 22 S 35 1/2 W 82 E Sugar 18 corner
 Bush 9 S 21 1/4 W 37
 Butler 12 S 31 E 188
 Wilson 24 N 15 1/2 E 61
 Cedar 26 S 64 E 31 1/4
 do 13 S 74 1/2 E 29
 do 14 N 23 E 37
 do 18 N 75 W 43 1/4
 do 21 S 26 E 32
 do 15 N 43 1/2 E 36
 Run by the true Meridian Vari 2:50 E
 Surveyed and Recorded March 31st 1853 by Asa
Jackson Co Surveyor for Ingham Co Mich

COUNTY SURVEYOR'S RECORD.

84-19336 TOWN 3rd NORTH, RANGE 2nd EAST, MERIDIAN OF MICHIGAN.

Locke

SEC. 31



181 000

TOWN 3rd NORTH, RANGE 2nd EAST, MERIDIAN OF MICHIGAN.

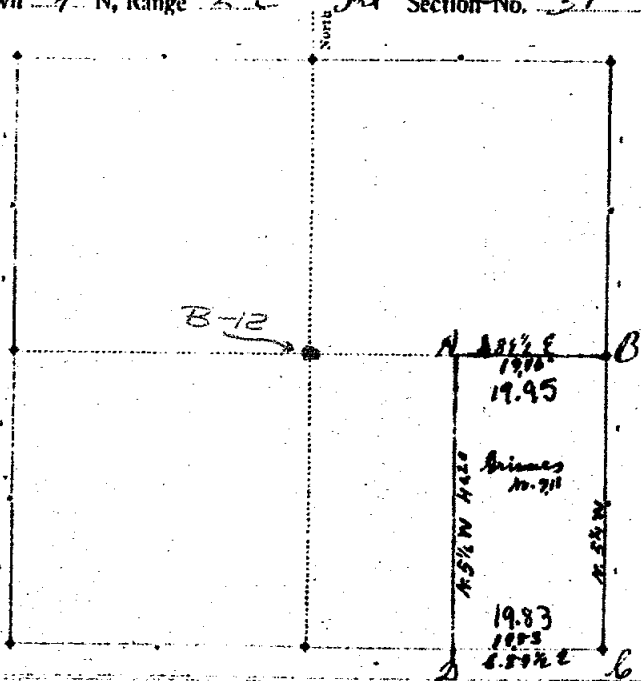
- 1 24
- 2 25
- 3
- 4
- 5
- 6
- 7
- 8
- 9
- 10
- 11 *Book 5 N 44 1/2 W 10*
- 12 *D. 19 N 6 3/4 E 29 1/2*
- 13 *or Book 5 N 47 1/2 E 28 1/2*
- 14 *Book 7 N 29 W 60*
- 15
- 16
- 17
- 18
- 19
- 20 *Book 5 N 73 1/2 W 15*
- 21 *Book 12 N 29 W 14*
- 22 *Book 15 N 61 E 57 1/2*
- 23 *D. 0 14 S 54 E 47 1/2*
- 24

Run by the true Meridian Nov 2 1856
 by A Jackson Co Surveyor

SOURCE: FOLDER #1 PAGE 49

TRANSCRIBED from ~~ORIGINAL~~ DUPLICATE on file at REMON. OFFICE

Town 4 N, Range 2 E PL Section No. 31



Section	Timber	Diam	Bearing	Links	Section	Timber	Diam	Bearing	Links
A	W. Oak	32	N 89 3/4 E	66 1/2					
	Asch.	8	N 24 W	66					
B	"	5	N 44 1/2 W	10					
	"	18	S 3 1/2 E	29					
b	W. Oak	3	N 93 E	18					
	maple	12	N 24 W	14					
D	B. Ash.	15	N 61 E	37 1/2					
	B "	14	S 54 E	47 1/2					

Run by the true meridian. Magnetic variation 2 degrees 40 minutes E.

Surveyed the 2 day of Feb. 1887 by

J. Jackson
County Surveyor of Ingham County, Michigan.

49

Sec. 31

LOCKE
township

19 N. R 2 E

B-12
corner code

attachment no.

p. 1 of 1