

(Clinton County)

29.6'  
53.15'  
14.13' → 25.6'

1" Iron pipe  
18" Walnut N.W. 25.73'  
SW.cor.house N.E. 111.02'  
24" Walnut N.E. 98.26' → 22.77'

	<p>Axle shaft 27" Elm N.W. 44.21' 23" Elm N.N.W. 59.82' 9" Elm W. 39.73'</p>	<p>1" Iron 24" Walnut E.N.E. 75.5' SW.cor.house N.E. 93.2' 18" Walnut W.N.W. 46.37'</p>	<p>Iron, stone, brick (1936) 5" Oak N.E. 31.3' 22" Walnut N.W. 42.0' 3" Walnut S.W. 61.6'</p>		
<p>haft r W. 87.08' V.W. 13.35' E. 28.70'</p>	<p>Axle Shaft 5" Iron pipe E. 15.0' 14" Poplar E.S.E. 70.14' 16" Oak S. 4.35'</p>				
<p>71) N.E. 73.01' W. 47.70' N.W. 100.57'</p>	<p>1/2" Iron (1971) 12" Apple N.N.E. 40.23' P.P. E.S.E. 83.95' I.P. W.N.W. 68.72'</p>				
				<p>544.5'   1/2" Iron bar SW.cor. house N.E. 95.8' N.W. cor. house S.E. 70.5'</p>	
				<p>1-1/4" Iron, stone Anch. post W. 24.1' 5" Elm W.N.W. 39.3' 4" Elm N.N.E. 79.1' 19" Elm S.W. 45.2'</p>	

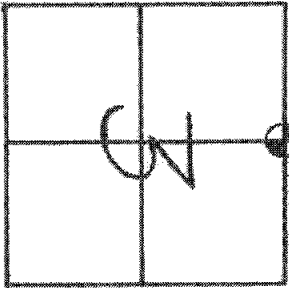
141V 111VV

Form 280  
(Rev. 3/60)

GOV'T. MONUMENT WITNESSES RECORD

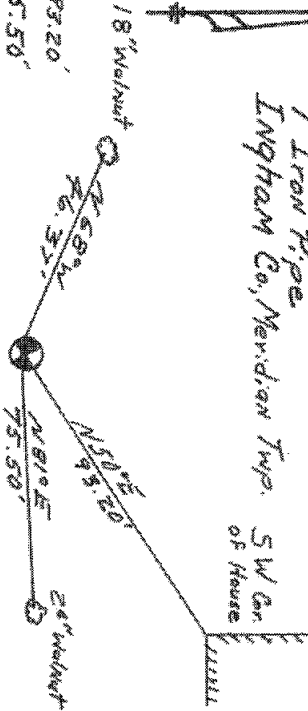
T. 4 N R. 1 W

CS. 19091-C1R SEC. NO. 3



WITNESSES  
 SW Cor. House N50°E 73.20'  
 24" Walnut N81°E 75.50'  
 18" Walnut N68°W 46.37'

DESCRIPTION  
 N 1/4 Post Sec. 3  
 1" Iron Pipe  
 Ingham Co., Meridian Twp.



MICHIGAN STATE HIGHWAY DEPARTMENT

Brewer Eng  
 SURVEY CHIEF  
 5-1-1955  
 DATE

