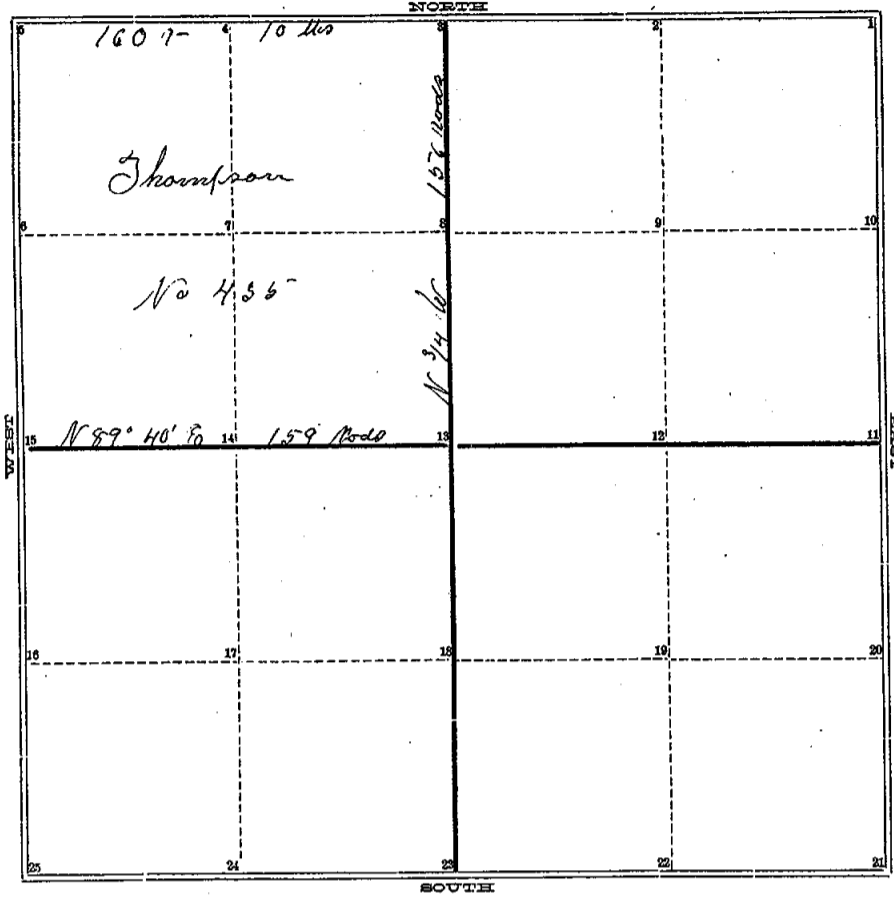


COUNTY SURVEYOR'S RECORD,

TOWN Four NORTH, RANGE One West, MERIDIAN OF MICHIGAN.

SEC. 4



P. 13 Vol 2

TOWN Four NORTH, RANGE One West, MERIDIAN OF MICHIGAN.

- 1
- 2
- 3 W Oak 16 West 17 1/2
- 4
- 5 A spin 6 S 12 1/2 W 31 1/2
- 6
- 7
- 8
- 9
- 10
- 11
- 12
- 13 W Oak 7 S 7 1/2 13
- 14
- 15 A spin 14 S 24 W 36
- 16
- 17
- 18
- 19
- 20
- 21

24
25

INGHAM COUNTY, MICHIGAN.

TOWN *Four* NORTH, RANGE *One West*, MERIDIAN OF MICHIGAN.

Run by the True Meridian $Var 3^{\circ} E$
Surveyed and Recorded July 15-1847
by A Jackson Co Surveyor Ingham Co