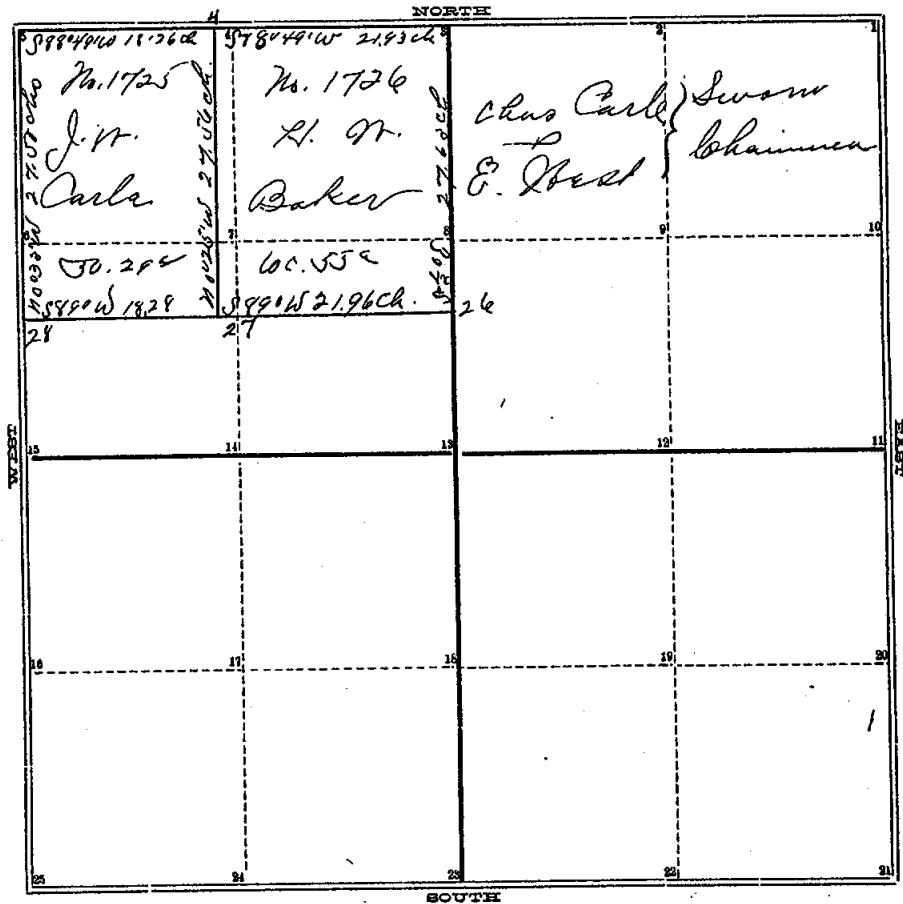


COUNTY SURVEYOR'S RECORD,
TOWN *Law* NORTH, RANGE *One West*, MERIDIAN OF MICHIGAN.

SEC. *9*



TOWN _____ NORTH, RANGE _____, MERIDIAN OF MICHIGAN.

- 1
- 2
- 3
- 4
- 5
- 6
- 7
- 8
- 9
- 10
- 11
- 12
- 13
- 14
- 15
- 16
- 17
- 18
- 19
- 20

24
25

INGHAM COUNTY, MICHIGAN.

TOWN Four NORTH, RANGE One West, MERIDIAN OF MICHIGAN.

Survey of the north one hundred and ten acres of the Northwest quarter of Section No. Eight in Township No Four North of Range No. One West, being divided as shown by the plat, by which the names of owners, the distance between corners and letters of reference to the same are respectively given.

The corners are described as follows.

- | | | | | | | |
|------|------------|-----------------|--------------|-------|------------|----------|
| (3) | Iron stake | for a B. Walnut | 18 in. diam. | bears | N 58 1/2 W | 90 links |
| (4) | Stone | Stake | | | | |
| (3) | " | " | " | " | " | " |
| (4) | Post | for a Sugar | 12 " " | " | N 64 W | 33 " |
| (17) | Stones | to be set | | | | |
| (4) | Post | for an Elm | 14 " " | " | S 86 1/2 E | 45 1/2 " |
| (15) | " | a Walnut | 15 " " | " | S 8 1/2 E | 85 " |

Note: - The corner (3) was lost and reestablished

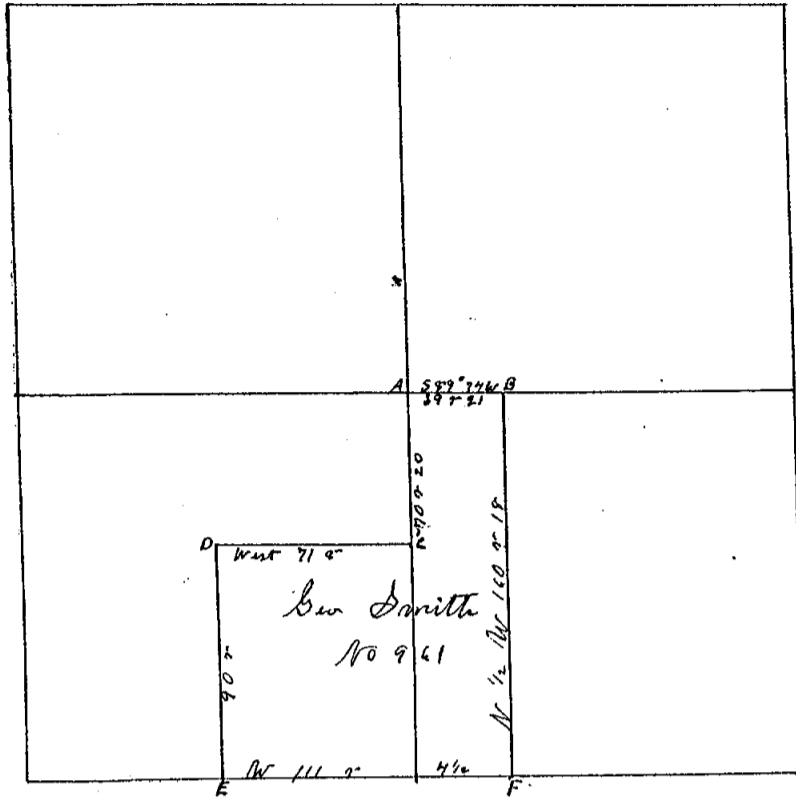
Run by the County Meridian Variation 1° 22' East
 Surveyed June 29th 1880

by A. P. Drake,
 Recorded Sept 3rd 1880. C. Surveyor.

COUNTY SURVEYOR'S RECORD

TOWN Four NORTH, RANGE One West, MERIDIAN OF MICHIGAN.

Section 7



P 295 Oak

TOWN Four NORTH, RANGE One West, MERIDIAN OF MICHIGAN.

- 1
- 2
- 3
- 4
- 5
- 6
- 7
- 8
- 9
- 10
- 11
- 12
- 13
- 14
- 15
- 16
- 17
- 18
- 19
- 20

- 24
- 25
- A Sugar 11 N 10 4/8 W 21 1/2
- Oak 23 N 38 1/2 E 2 1/2
- Buck 24 S 57 2 21 3/4
- B D O 12 S 30 1/2 E 19 30 1/2
- C Sugar 14 N 50 1/2 E 30 1/2
- Buck 22 N 5 1/4 W 38 3/4
- Oak 20 S 86 1/2 E 11 1/2
- D D O 22 N 10 1/2 E 16 1/2
- Oak 26 N 2 W 91 3/4
- E W. D O 14 N 75 1/4 W 41 1/2
- D O 27 S 23 1/4 W 79
- F Buck 12 S 7 3/4 E 52 1/2

INGHAM COUNTY, MICHIGAN

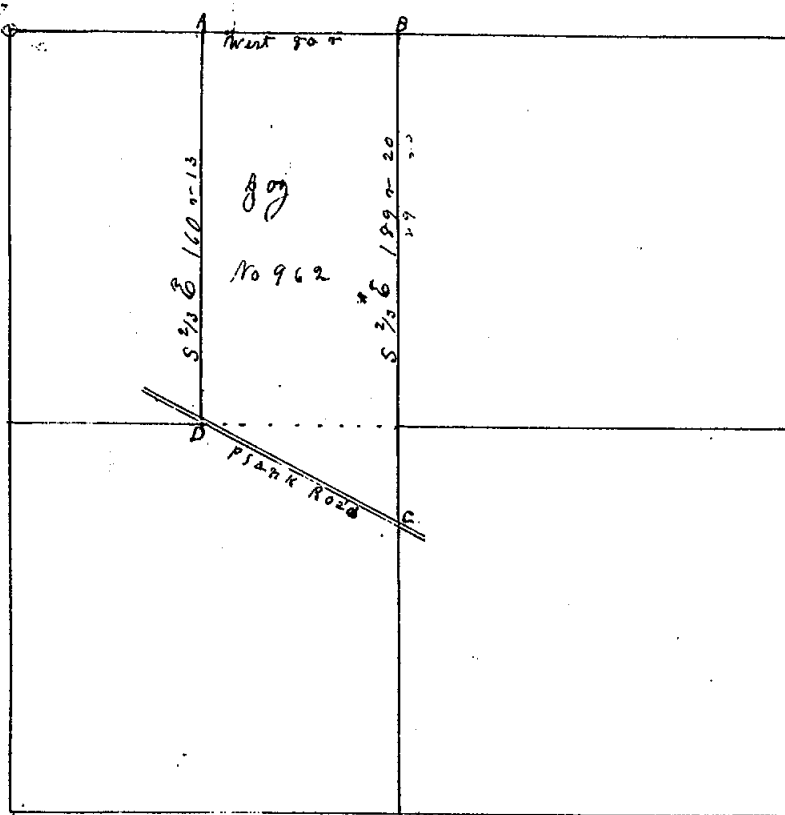
TOWN *Town* NORTH, RANGE *One West*, MERIDIAN OF MICHIGAN.

*Run By the True Meridian (or 2 3/4' E)
Quoted and Recorded July 28th 1856
By A Jackson Geo Surveyor*

COUNTY SURVEYOR'S RECORD,

TOWN Four NORTH, RANGE One West, MERIDIAN OF MICHIGAN.

Section 18



3.94

TOWN Four NORTH, RANGE One West, MERIDIAN OF MICHIGAN.

- 1
- 2
- 3
- 4
- 5
- 6
- 7
- 8
- 9
- 10
- 11
- 12
- 13
- 14
- 15
- 16
- 17
- 18
- 19
- 20

24
 25
 A Cherry 6 S 9 1/4 E 44 1/2
 W Oak 18 N 57 1/2 E 42 1/2
 Sugar 10 N 57 1/2 W 57 1/2
 B D O 12 S 49 1/2 W 29
 Bush 9 N 60 1/2 E 52 1/2
 C R Oak 4 S 27 1/4 W 30
 W Oak 12 N 55 1/2 E 69 1/2
 D S W Oak 6 N 8 1/4 W 87 1/2

INGHAM COUNTY, MICHIGAN

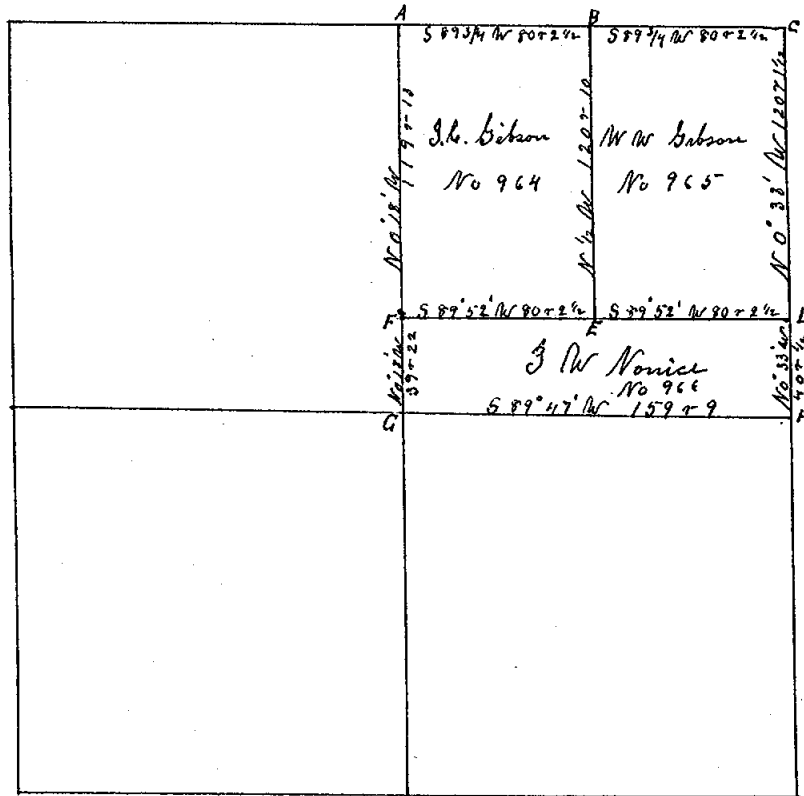
TOWN *Four* NORTH, RANGE *One* West, MERIDIAN OF MICHIGAN.

Run by the true Meridian (Var 27⁵ E)
Surveyed and Recorded July 29th 1858
By A Jackson Esq Surveyor

COUNTY SURVEYOR'S RECORD

TOWN *Iron* NORTH, RANGE *One* West, MERIDIAN OF MICHIGAN.

Section 7



P. 296 Vol. 2

TOWN *Iron* NORTH, RANGE *One* West, MERIDIAN OF MICHIGAN.

- 1
- 2
- 3
- 4
- 5
- 6
- 7
- 8
- 9
- 10
- 11
- 12
- 13
- 14
- 15
- 16
- 17
- 18
- 19
- 20

- 24
- 26
- A Iron 6 S 15 E 17 1/2 W 2
- Beech 6 N 34 W 27
- Sup. W Oak 24 6 7 1/2 E 9 5/8 3/4
- B Elm 25 N 44 W 42 3/4
- Elm 20 S 48 1/2 W 2 5/8
- C Spruce 26 N 75 1/2 E 26
- Beech 18 N 48 1/4 W 5 0
- D Maple 10 S 85 1/2 E 60
- Sup. W Oak 29 N 41 1/4 W 26
- E Birch 11 N 27 3/4 E 16
- Beech 13 S 31 1/2 E 31 3/4
- G DO 15 N 75 E 60
- Sugar 11 N 10 1/2 W 21 1/2
- H W Oak 23 N 59 1/2 E 21 1/2
- Beech 24 6 7 1/2 W 17
- H W Oak 6 S 30 E 25

INGHAM COUNTY, MICHIGAN

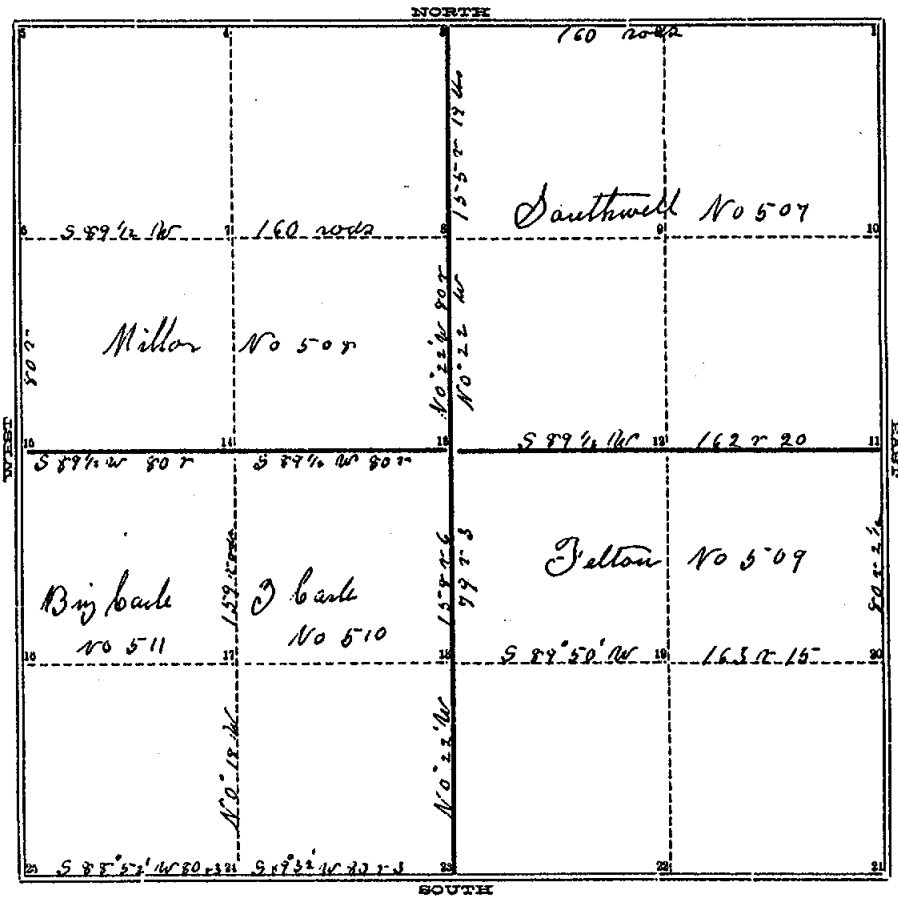
TOWN *Four* NORTH, RANGE *One West*, MERIDIAN OF MICHIGAN.

Run by the true Meridian (Var 2 3/4 E)
Surveyed and Recorded July 30 1876
By A Jackson Co Surveyor

COUNTY SURVEYOR'S RECORD

TOWN *Down* NORTH, RANGE *One West*, MERIDIAN OF MICHIGAN.

SEC. 5



755-1022

TOWN *Down* NORTH, RANGE *One West*, MERIDIAN OF MICHIGAN.

B 1 *Aspen 9 S W 31*
Do 5 S 73 E 11

W Oak 14 N 57 E 66
M 24 Do 24 N 78 W 84
elm 20 S 48 W 28
L 25 Aspen 26 N 73 E 26

a 3 *3m Marsh*

4

5 *R Oak 9*

D 6 *3m Marsh*

7 *R Oak 9 S 89 1/2 W 100*

c 8 *in marsh*

9

10 *Aspen 14 S 24 W 35*

H 11 *W Oak 3 S 47 E 40*

12 *R Oak 16 S 40 W 35*

B 13 *W Oak 12 S 45 W 27 1/2*

W Oak 12 *N 83 W 14*

F 14 *Do 13 S 14 1/2 E 19*

A *Aspen 3 N 44 W 56*

E 15 *B Ash 3 S 26 E 44*

16

17 *W Oak 16 N 25 W 3*

K 18 *R Oak 24 N 37 E 23 1/2*

19

W Oak 11 *N 38 W 43*

J 20 *By Oak 22 N 58 E 32*

21

22 *B Ash 12 S 60 E 26*

N 23 *elm c N 55 E 40*

INGHAM COUNTY, MICHIGAN.

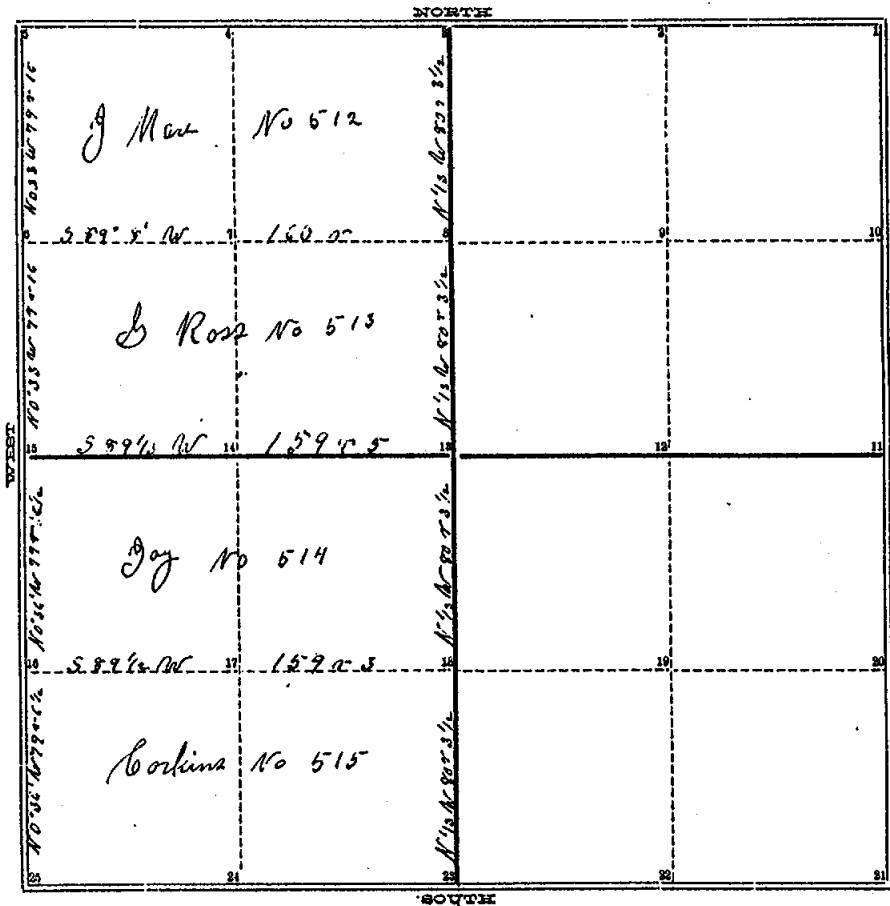
TOWN *Four* NORTH, RANGE *One West*, MERIDIAN OF MICHIGAN.

Run by the true Meridian Var 3° E
Surveyed and Recorded May 9 - 1848
by A. Jackson Co Surveyor

COUNTY SURVEYOR'S RECORD

TOWN *Jenn* NORTH, RANGE *One West*, MERIDIAN OF MICHIGAN.

SEC. *8*



P 66 No 2

TOWN *Jenn* NORTH, RANGE *One West*, MERIDIAN OF MICHIGAN.

- 1
- 2 *B Ash 12 S 60 E 25*
- 3 *36 Elm 6 N 33 E 40*
- 4
- 5 *2 Elm 20 S 48 1/2 W 28*
- 6 *5 Oak 20 N 75 1/2 E 25*
- 7 *10 Oak 36 S 20 E 30*
- 8 *Do 30 N 30 W 24*
- 9
- 10
- 11
- 12
- 13 *J marsh No Bearing Tree*
- 14
- 15 *Bush 24 S 75 W 17*
- 16 *W Oak 6 S 80 E 25*
- 17 *R Oak 24 N 54 1/2 W 104*
- 18 *W Oak 34 S 9 1/2 E 94*
- 19
- 20
- 21
- 22
- 23 *Jam 7 corner Tree*

24 *Bush 12 N 45 W 20*
 25 *Jan 4 S 75 E 20*

INGHAM COUNTY, MICHIGAN.

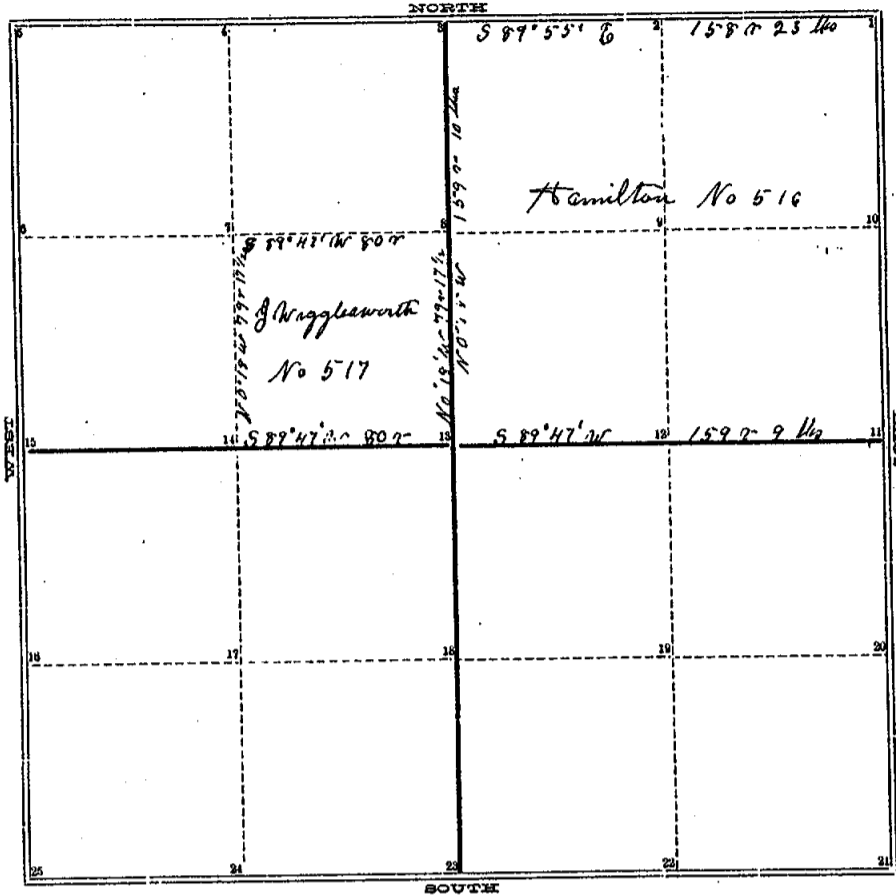
TOWN *Iron* NORTH, RANGE *One* *Acres*, MERIDIAN OF MICHIGAN.

Run by the true Meridian Var 3°
Surveyed and Recorded May 11, 1848
by A Jackson Co Surveyor

COUNTY SURVEYOR'S RECORD

TOWN *Four* NORTH, RANGE *One West*, MERIDIAN OF MICHIGAN.

SEC. 7



P 67 Vol 2

TOWN *Four* NORTH, RANGE *One West*, MERIDIAN OF MICHIGAN.

- 13 Oct 13 S 59 1/2 E 23 1/2
- B 1 Egan 20 S 48 1/2 W 28
- 20 29 N 75 1/2 E 26
- 24
- 2 Bush C N 34 W 27
- 26
- a 3 Don C S 13 E 17
- 4
- 5
- 6
- 7
- 8
- 9
- 10
- 11
- 12
- 13
- 14
- 15
- 16
- 17
- 18
- 19
- 20
- 21

INGHAM COUNTY, MICHIGAN.

TOWN *Four* NORTH, RANGE *One West*, MERIDIAN OF MICHIGAN.

Run by the true Meridian $Var 3^{\circ} E$
Surveyed and Recorded May 12th 1848
by A Jackson Co Surveyor