

C Post O. W. S.

Section Corners  
1  
2  
3  
4  
\*  
6  
7  
8  
9  
10  
11  
12  
13  
14  
15

- 1 Stone 14 links South of Leslie stone
- 2 Set Stone with small stone f.w. bears Hick 10 N 16° W / 13 1/2 links  
Apple 14 S. 39° E. 72 "
- 3 Stone f.w. bears W. Oak N 20° E. 113 links  
Sulph. W. Oak N 27° W 89 "
- 4 \*  
Rella Cherry 6 S 25° W. 63 1/2 "
- 6 Old Post f.w. bears Butternut 6. N 68 1/2° E. 39 links  
Butternut 8 N 26 1/2° E. 64 3/4 links
- 7 Set Stone f.w. bears Sugar 10 N 66° W. 55 "  
W. Oak 4 S. 54° W 60 "
- 8
- 9
- 10
- 11
- 12
- 13 Set stone with stone around f.w. bears walnut 6. S 7 3/4° W. 19 links
- 14
- 15

a  
b  
c  
d  
e  
f  
g  
h  
X Posts on X Lines.  
Centers of X Sections.

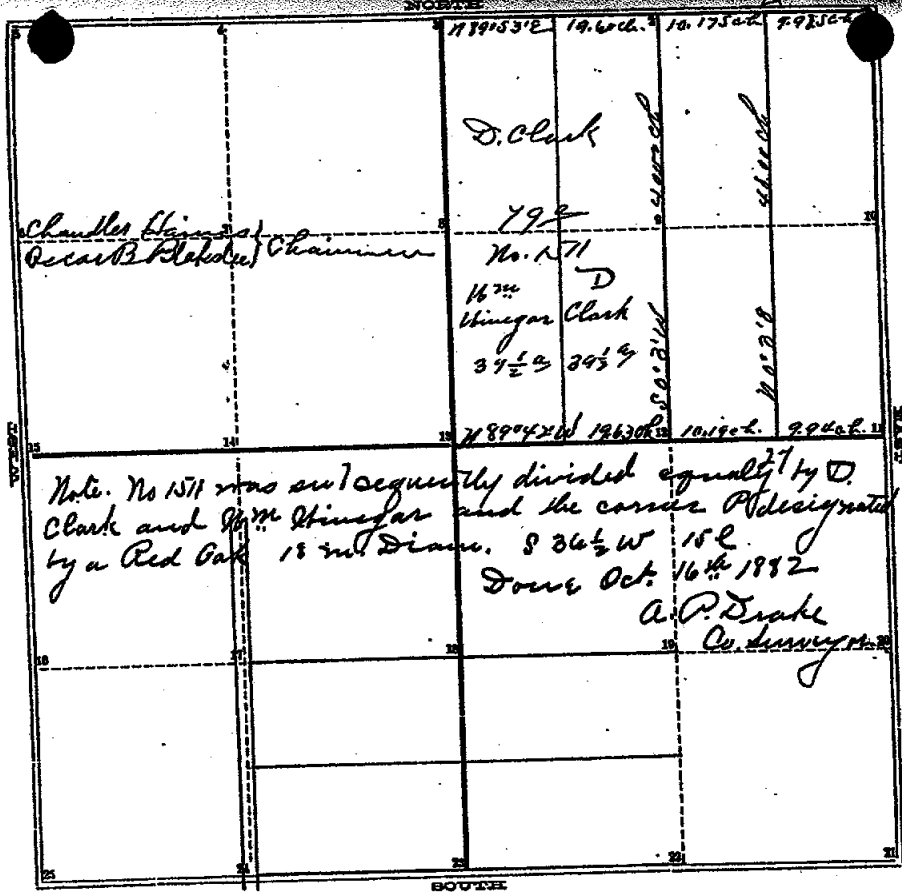
Set Stone f.w. bears Whitewood 12, S. 10 1/2° E. 38 links.  
B. Ash. 14, N. 2 1/2° E. 68 "

Magnetic Variation 10'

STATE OF MICHIGAN, }  
COUNTY OF INGHAM, } ss. E. A. Galbins Deputy, County Surveyor of S.  
Do Hereby Certify that I did, on the application of E. Johnson, Will Ford and Roy Pa

Survey East and South Section lines and part of N + S. 1/2  
of

Section 13, in the Township of Onondaga, Town 1, North, Range 2  
on August 28th + 29th, A.D. 1900, and the following persons acted as chainmen, first being duly sworn,  
E. Johnson and W. Fox



TOWN One NORTH, RANGE Two West, MERIDIAN OF MICHIGAN.  
 The corners are described as follows

Corner	Trunk	Beam	Bear	Its Corner	Trunk	Beam	Bear	Its
1 Stone	Apple	9	N 47 3/4 E	91	24			
2 a post	Bitternut	10	S 63 E	112 1/2	25			
3 a stone	Cherry	4	S 4 W	47				
3 "	"	4	S 49 3/4 W	72 1/2				
4								
5								
6								
7								
8								
9								
10								
11 a post	Maple	20	S 20 3/4 E	103				
12 a post	Double Beech	20	S 79 E	39				
13 "	Maple	10	S 23 E	29				
13 "	"	10	N 74 1/2 W	21 1/2				
14								
15								
16								
17								

26 Stone in center of highway  
 27 a post Beech 12 N 34 3/4 W 16

This is the original corner made by A. Jackson. Jan 21st 1839.

## INGHAM COUNTY, MICHIGAN.

TOWN One NORTH, RANGE Two West, MERIDIAN OF MICHIGAN.

Survey of the Northeast quarter of section No Thirteen in Township No One North of Range No Two West as represented by the accompanying plat the scale of which is Thirteen chains to one inch by which the bearings and lengths of the lines surveyed, the location of the roads, the names of the owners, the number of acres owned by each, and letters of reference to lines and corners are respectively given.

Note:— The corner (11) was lost but the corresponding corner in T1N R1W established by Mr. Jackson was readily found and this corner was located at its proper distance south of it being nine links there from.

Run by the true Meridian Mag. Var  $1^{\circ} 52'$  East.  
 Surveyed Apr 23<sup>rd</sup> 1877 and Rechecked May 28<sup>th</sup> 1877  
 by A. P. Drake  
 C. Surv.