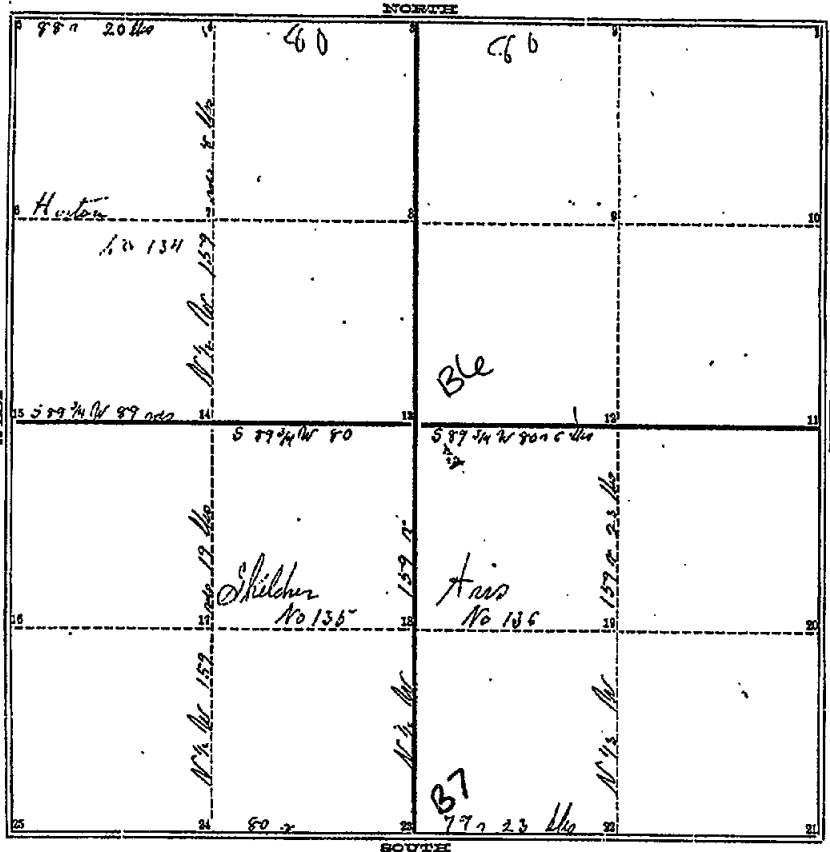


COUNTY SURVEYOR'S RECORD,

TOWN Oshtemo NORTH, RANGE 3rd West, MERIDIAN OF MICHIGAN.

SEC. Eighteen



Page 24 cont.

TOWN Oshtemo NORTH, RANGE 3rd West, MERIDIAN OF MICHIGAN.

- 1
  - 2
  - 3
  - 4
  - 5
  - 6
  - 7
  - 8
  - 9
  - 10
  - 11
  - 12
  - 13
  - 14
  - 15
  - 16
  - 17
  - 18
  - 19
  - 20
  - 21
  - 22
  - 23
- Edwin C. N. S. W. 29 1/2' W  
No other trees
- 32
- 33
- 34
- 35
- 36
- 37
- 38
- 39
- 40
- 41
- 42
- 43
- 44
- 45
- 46
- 47
- 48
- 49
- 50
- 51
- 52
- 53
- 54
- 55
- 56
- 57
- 58
- 59
- 60
- 61
- 62
- 63
- 64
- 65
- 66
- 67
- 68
- 69
- 70
- 71
- 72
- 73
- 74
- 75
- 76
- 77
- 78
- 79
- 80
- 81
- 82
- 83
- 84
- 85
- 86
- 87
- 88
- 89
- 90
- 91
- 92
- 93
- 94
- 95
- 96
- 97
- 98
- 99
- 100

Feb 1841  
4/25

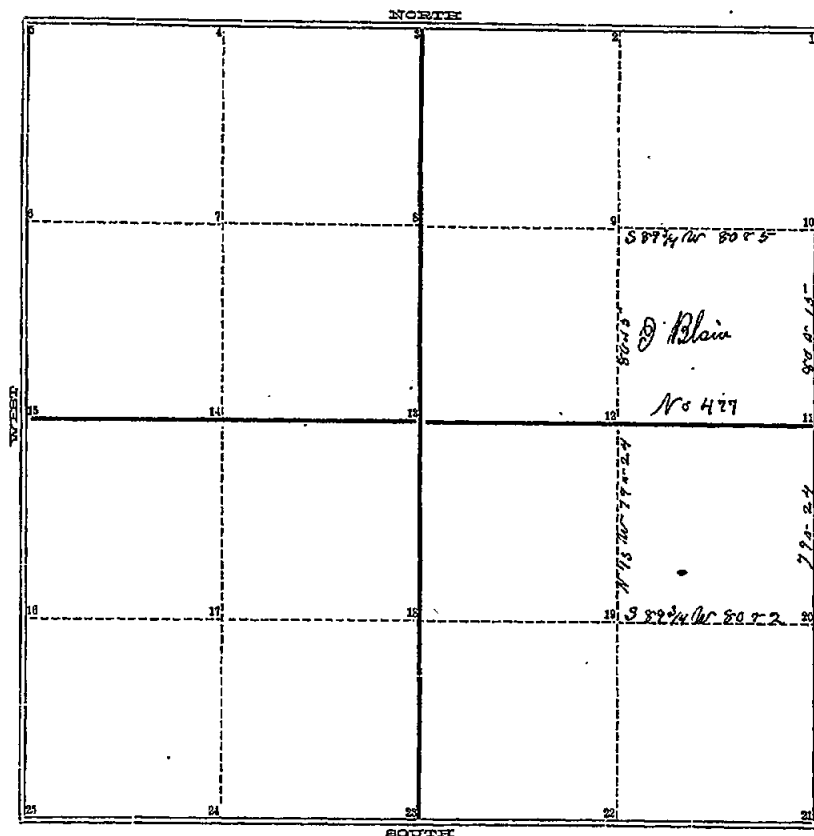
## INGHAM COUNTY, MICHIGAN.

TOWN *Cair* NORTH, RANGE *Five West*, MERIDIAN OF MICHIGAN.

Run by the Base Meridian Van 314 to Surveyed and recorded Feb 18<sup>th</sup> 1841  
by A Jackson Co Surveyor

COUNTY SURVEYOR'S RECORD,  
TOWN One NORTH, RANGE Two West, MERIDIAN OF MICHIGAN.

SEC. 18



One mile

TOWN One NORTH, RANGE Two West, MERIDIAN OF MICHIGAN.

- |      |  |
|------|--|
| 1    | 24   |
| 2    | 25   |
| 3    |  |
| 4    |  |
| 5    |  |
| 6    |  |
| 7    |  |
| 8    | w Oak 30 S 57 1/2 W 39                           |
| a 9  | D O 26 S 14 E 74<br>Pauk. w Oak 26 S 64 3/4 E 50 |
| b 10 | B Oak 4 S 67 1/2 W 12                            |
| 11   |  |
| 12   |  |
| 13   |  |
| 14   |  |
| 15   |  |
| 16   |  |
| 17   |  |
| 18   | w Oak 10 N 21 1/2 W 51 1/4                       |
| d 19 | D O 13 S 4 1/2 W 26 1/2<br>w Oak 9 N 67 1/2 W 73 |
| c 20 | D O 12 N 74 W 90                                 |
| 21   |  |

Jan 1848

4/214

INGHAM COUNTY, MICHIGAN.

214

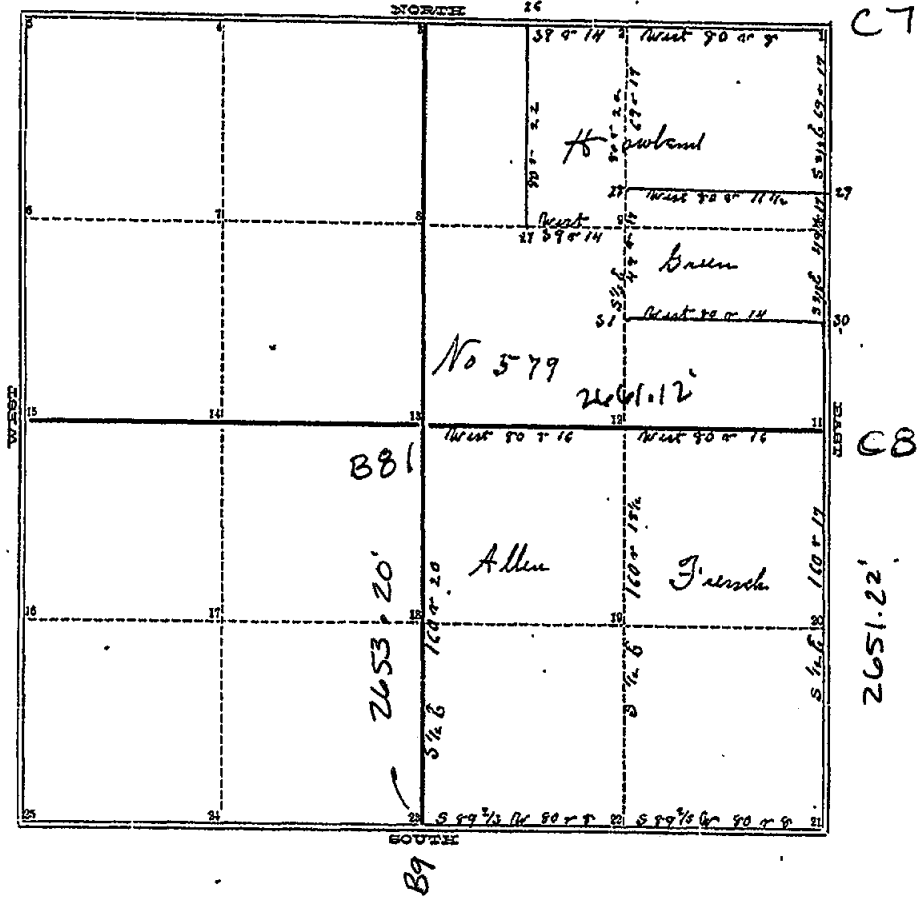
TOWN *One* NORTH, RANGE *Two* West, MERIDIAN OF MICHIGAN.

Run by the True Meridian  $10^{\circ} 3' 6''$   
Surveyed and Recorded Jan'y 22. 1848 ..  
by A. Jackson Geo Surveyor

COUNTY SURVEYOR'S RECORD,

TOWN One NORTH, RANGE Two West, MERIDIAN OF MICHIGAN.

SEC. 19



TOWN One NORTH, RANGE Two West, MERIDIAN OF MICHIGAN.

- 1 No Oak 10 S 69 W 171 C7
- 2 Do 15 N 85 E 75
- 3 Do Oak 39 N 59 W 47
- 4 Elm 15 N 33 1/2 E 57
- 5
- 6
- 7
- 8 No Oak 11 N 47 1/2 E 137
- 9 Do 12 S 72 E 114 1/2
- 10 Elm 16 S 55 E 12
- 11 B Oak 8 N 73 E 27 1/2 C8
- 12 Do Oak 14 N 71 E 45
- 13 Do 14 N 25 1/4 E 42
- 14 Do Oak 19 N 47 E 12
- 15 Hick 9 N 75 E 191 B8
- 16
- 17
- 18
- 19
- 20 No Oak 6 S 32 W 162 1/2
- 21 Do Oak 14 N 51 E 130
- 22 Do Oak 17 N 57 1/2 W 53 1/2
- 23 Do 16 N 79 1/2 W 86 1/2
- 24 Do Oak 12 S 50 E 103
- 25 B Oak 10 N 78 1/2 W 106

- 24
- 25
- 26 No Oak 14 S 13 W 64
- 27 Do 12 N 59 W 47
- 28 Do Oak 18 N 17 1/2 W 39
- 29 No Oak 10 N 41 W 57
- 30 Do Oak 15 S 10 W 67 1/2
- 31 Hick 9 S 77 1/2 W 18 1/4
- 32 Do Oak 9 S 60 1/4 E 95 1/2
- 33 No other trees
- 34 Do Oak 6 N 74 1/4 W 100
- 35 No other trees
- 36 Do Oak 20 N 31 E 5 1/2
- 37 No other trees

Aug 1852  
9/279

INGHAM COUNTY, MICHIGAN.

279

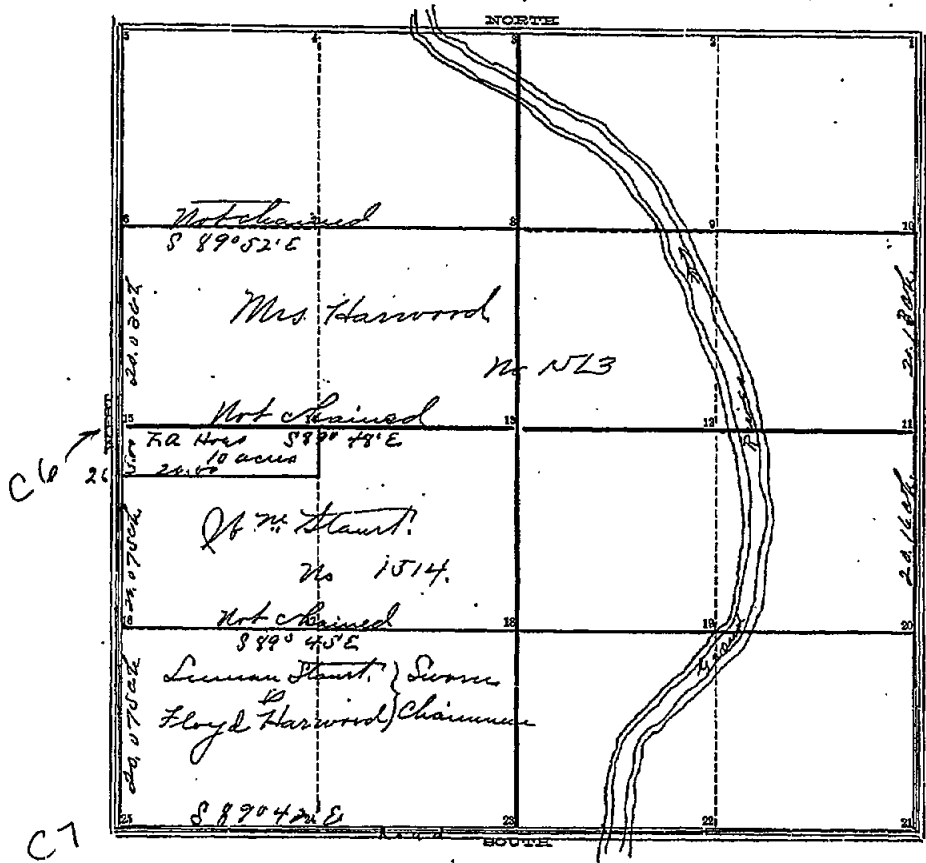
TOWN *One* NORTH, RANGE *Three West*, MERIDIAN OF MICHIGAN.

*Born by the true Meridian Was 2° 50' 0*  
*Surveyed and Recorded by A Jackson County Surveyor August 26th 1852*

COUNTY SURVEYOR'S RECORD,

TOWN One NORTH, RANGE Two West, MERIDIAN OF MICHIGAN.

SEC. 17



TOWN \_\_\_\_\_ NORTH, RANGE \_\_\_\_\_, MERIDIAN OF MICHIGAN.

Courses Described

Corner	Timber	Diam	Tree	L/No	Corner	Timber	Diam	Tree	L/No
1					24				
2					26	26 Oak	20	71 22 1/2 E	137 1/2
3						B. Oak	12	71 78 1/2 W	152 1/2 C7
4									
5									
6	post	76	Oak	10					
7									
8									
9									
10	post	Mill	Stump	40					
	post	White	Oak	5					
11	"	Maple		3					
12									
13									
14									
	Stone	and	B. Oak	12					
				22					
15	stone		Maple	12					
	stone		Maple	8					
16	stone		R. Oak	10					
17									
18									
19									
20									
21									

May 1877

## INGHAM COUNTY, MICHIGAN.

TOWN *West* NORTH, RANGE *Two West*, MERIDIAN OF MICHIGAN.

Survey of the south half of the north half and the north half of south half of Section No. 20 situated in Township No. One North of Range No. Two West, as shown by the plat on a scale of 13 chains to one inch, by which the lines are shown and the distances as measured, the relative position of the river, the names of corners, letters of reference to lines and corners are respectively given. The river being plotted from the U. S. Survey.

Note: - (The corners (25)(10) ~~are~~ also the corner (6) were established by A. Jackson and readily found. At (25) I found the stump of a original witness tree.

Run by the true Meridian Mag. Var  $1^{\circ}55'$  East.

Surveyed Apr. 9<sup>th</sup> & 10<sup>th</sup> 1877. and Recorded May 29<sup>th</sup> 1877

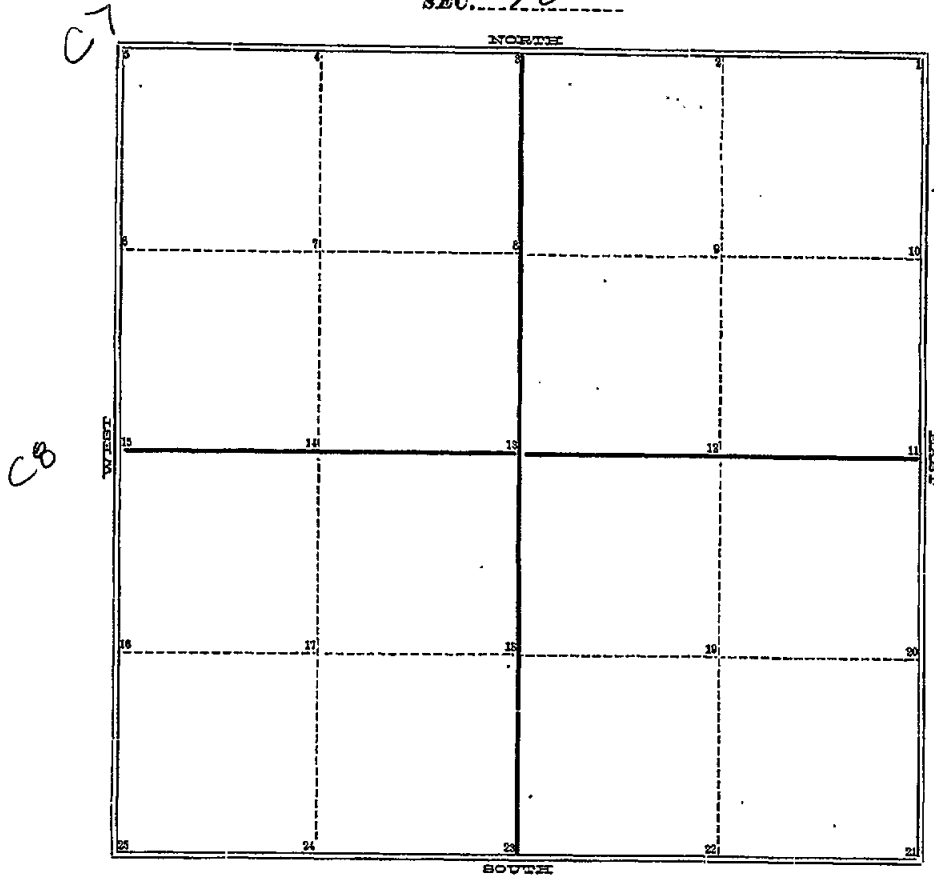
by A. P. Drake, Co. Surv.

(26) Elm 5m 77<sup>th</sup> W 36 lks Maple 88<sup>th</sup> E 89 lks Surveyed Sep 26<sup>th</sup> 1892. Edward B. Ripley and Ed. Morrison Surveyors  
G. Edwin States Co. Surv.

COUNTY SURVEYOR'S RECORD,

TOWN 1 NORTH, RANGE 26, MERIDIAN OF MICHIGAN.

SEC. 20



TOWN NORTH, RANGE, MERIDIAN OF MICHIGAN.

- 1 Stake Billenat N-E 65' 24
- 2 Stake Maple 12 N-E 49.5'
- 3 20' x 3' x 14" S.E. corner N-W 48.5' 25

- 3
- 4
- 5 Stake C7
- 6
- 7
- 8
- 9
- 10
- 11
- 12
- 13
- 14
- 15 Stake C8
- 16
- 17
- 18
- 19
- 20
- 21

undated.

## INGHAM COUNTY, MICHIGAN.

TOWN...1... NORTH, RANGE...24... MERIDIAN OF MICHIGAN.

Began at N.W. corner (Iron) Measured South  
at 707.5' found W $\frac{1}{4}$  post (Stake)

Set stake 70 rods north of No 6 for road center

Searched for N.E. corner found stone for.

Bitternut N-E, 65' Bitternut N-E 54'

Chained west and set stake at 973' for half the  
distance east of Grand River

Sought for W $\frac{1}{4}$  post

Set square iron 2"x3"x14" with 8"x10" bottom for.

Maple 12" N E 49.5' S.E. corner NW 48.5'

R. J. Robb  
Co. Surveyor.