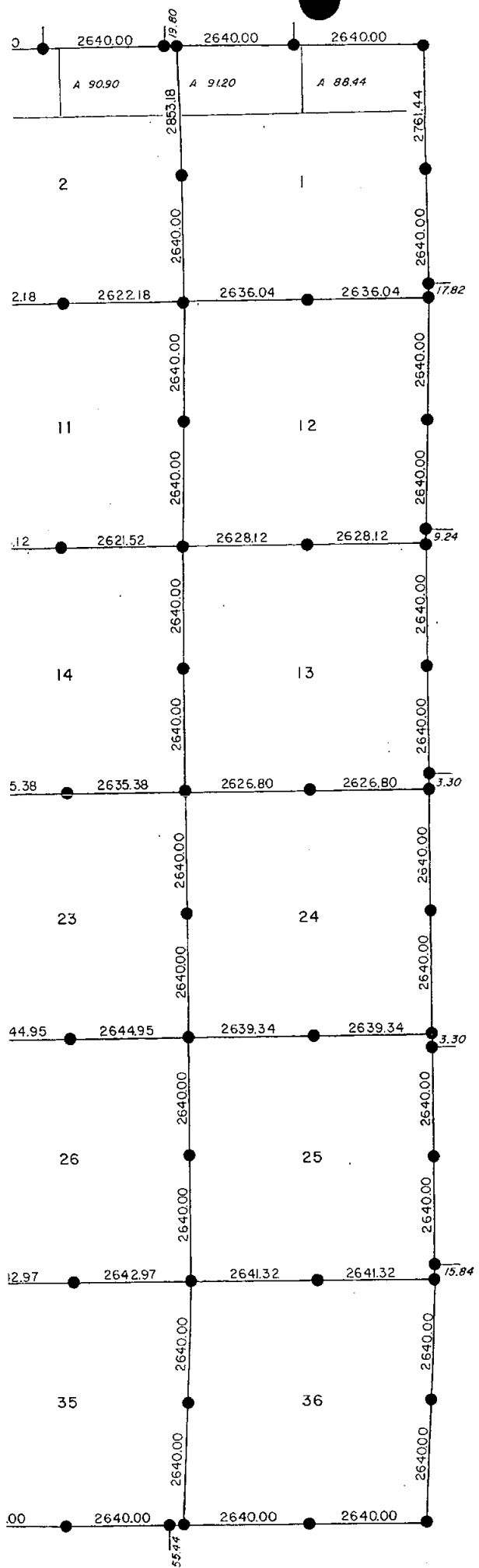


# INGHAM COUNTY, MICHIGAN

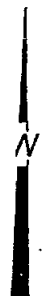
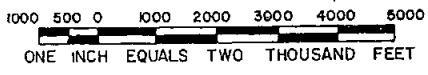
## ONONDAGA TOWNSHIP T1N-R2W

### G.L.O. PLAT MAP (GENERAL LAND OFFICE)



- Corner Set  
by the original survey
- Post Set  
by the original survey
- A 40.00 Acreage  
(from original G.L.O. plats)
- ┆ 66.00 Closing Corner Offsets

Measurements which are shown outside subject township refer to adjacent townships. All measurements shown are in feet.



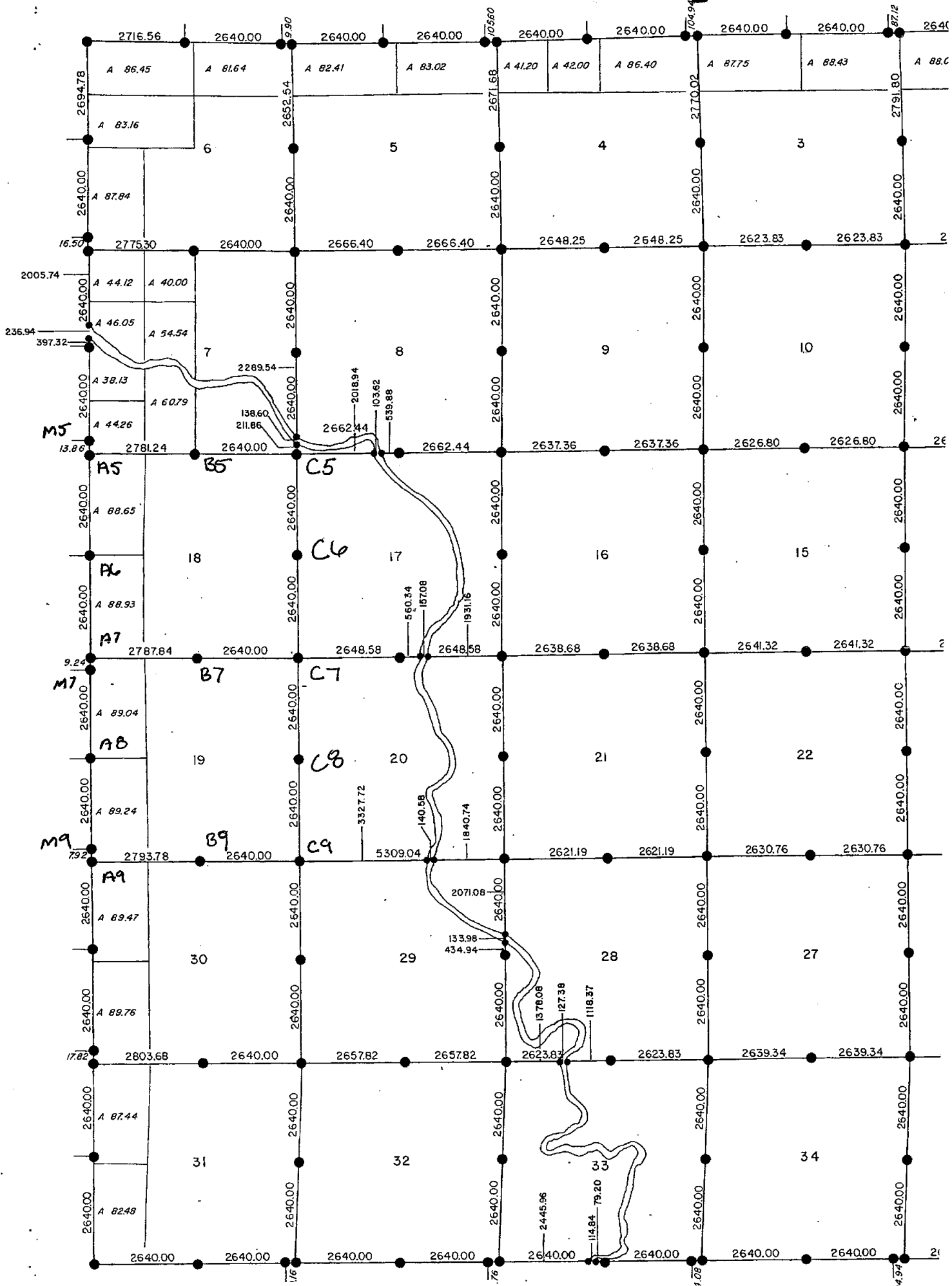
SOURCE : GENERAL LAND OFFICE FIELD NOTES (G.L.O.)

EXTERIOR FIELD SURVEY (Township Boundary)  
 South Boundary  
 Surveyed: *January 21, 1824 by J. Wampler*  
 East Boundary  
 Surveyed: *May 3, 1825 by J. Wampler and J. Mullett*  
 North Boundary (South Boundary of Aurelius Township)  
 Surveyed: *May 8, 1825, Surveyor not noted*  
 West Boundary (East Boundary of Hamlin Township, Eaton County)  
 Surveyed: *date and Surveyor not noted*

INTERIOR FIELD SURVEY  
 Surveyed: *October 8, 1825 - January 6, 1826*  
 Certified: *March 20, 1826*  
 Surveyor: *H. Parke*

The distances and monuments shown are from the original field notes which are held by the Michigan State Department of Natural Resources, Lands Division. Distances were originally recorded in chains and links.

Prepared by the Ingham County  
 Survey and Remonumentation Project  
 1978 - 1979  
 under the supervision of  
 Polaris Associates, Inc.  
 Registered Land Surveyors  
 Mason, Michigan





		16 chains			40-55 Chains	
		Stone with (C) Orchard 2740 on top 20" Oak 1715 NE 20" Spruce 1715 SE 20" Spruce 1715 SE 20" Spruce 1715 SE 20" Spruce 1715 SE 20" Spruce 1715 SE				Wood Post (D 25) 17" Oak 1112 SE 17" Oak 1112 SE
	165	Stone, Birch, Oak on top 20" Oak 1715 NE 20" Spruce 1715 SE 20" Spruce 1715 SE 20" Spruce 1715 SE 20" Spruce 1715 SE	Stone, Birch, Oak on top 20" Oak 1715 NE 20" Spruce 1715 SE 20" Spruce 1715 SE 20" Spruce 1715 SE 20" Spruce 1715 SE	Stone, Birch, Oak on top 20" Oak 1715 NE 20" Spruce 1715 SE 20" Spruce 1715 SE 20" Spruce 1715 SE 20" Spruce 1715 SE	20" Oak 1715 NE 20" Spruce 1715 SE 20" Spruce 1715 SE 20" Spruce 1715 SE 20" Spruce 1715 SE	20" Oak 1715 NE 20" Spruce 1715 SE 20" Spruce 1715 SE 20" Spruce 1715 SE 20" Spruce 1715 SE
	162	Stone, Birch, Oak on top 20" Oak 1715 NE 20" Spruce 1715 SE 20" Spruce 1715 SE 20" Spruce 1715 SE 20" Spruce 1715 SE				
	168					
	165					
	162					
	168					
	165					
	162					
	168					
	165					
	162					
	168					
	165					
	162					
	168					
	165					
	162					
	168					
	165					
	162					
	168					
	165					
	162					
	168					
	165					
	162					
	168					
	165					
	162					
	168					
	165					
	162					
	168					
	165					
	162					
	168					
	165					
	162					
	168					
	165					
	162					
	168					
	165					
	162					
	168					
	165					
	162					
	168					
	165					
	162					
	168					
	165					
	162					
	168					
	165					
	162					
	168					
	165					
	162					
	168					
	165					
	162					
	168					
	165					
	162					
	168					
	165					
	162					
	168					
	165					
	162					
	168					
	165					
	162					
	168					
	165					
	162					
	168					
	165					
	162					
	168					
	165					
	162					
	168					
	165					
	162					
	168					
	165					
	162					
	168					
	165					
	162					
	168					
	165					
	162					
	168					
	165					
	162					
	168					
	165					
	162					
	168					
	165					
	162					
	168					
	165					
	162					
	168					
	165					
	162					
	168					
	165					
	162					
	168					
	165					
	162					
	168					
	165					
	162					
	168					
	165					
	162					
	168					
	165					
	162					
	168					
	165					
	162					
	168					
	165					
	162					
	168					
	165					
	162					
	168					
	165					
	162					
	168					
	165					
	162					
	168					
	165					
	162					
	168					
	165					
	162					
	168					
	165					
	162					
	168					
	165					
	162					
	168					
	165					
	162					
	168					
	165					
	162					
	168					
	165					
	162					
	168					
	165					
	162					
	168					
	165					
	162					
	168					
	165					
	162					
	168					
	165					
	162					
	168					
	165					
	162					
	168					
	165					
	162					
	168					
	165					
	162					
	168					
	165					
	162					
	168					
	165					
	162					
	168					
	165					
	162					
	168					
	165					
	162					
	168					
	165					
	162					
	168					
	165					
	162					
	168					
	165					
	162					
	168					
	165					
	162					
	168					
	165					
	162					
	168					
	165					
	162					
	168					
	165					
	162					
	168					
	165					
	162					
	168					
	165					
	162					
	168					
	165					
	162					
	168					
	165					
	162					
	168					
	165					
	162					
	168					
	165					
	162					
	168					
	165					
	162					
	168					
	165					
	162					
	168					
	165					
	162					
	168					
	165					
	162					
	168					
	165					
	162					
	168					
	165					
	162					
	168					
	165					
	162					
	168					

				40.115 ch.	
Iron, brick, stone 14' Spruce WNW 47.9' 20' Spruce E.S.E. 64.25' 20' Spruce N.E. 52.8' SW cor. school N.E. 101.2' 30' Apple SW 63.2'				Wood post (1875) 7' Oak S.E. 66.75-L 142' Hickory ENE 60.0-L	Wood 36' Oak 14' Maple
6			5		4
16.5 Plow point, stone, brick 9' Elm E. 59.9' 18' Pignut E. 27.5' 15' Pignut NNW 107.1'	Iron, stone, brick SW cor. house N.E. 131.15' 20' Hickory WNW 124.8' 10' Hickory NW 29.5' HW Iron S 33.0'	Plow point, stone 7' Oak S.S.E. 61.3' 10' Oak NW 46.1' 24' Oak E.N.E. 104.8' 6' Oak WNW 79.4'		3/4" Pipe, brick 10' Cedar E.S.E. 61.7' S.E. cor. school NW 79.3' 24' Maple S.W. 76.3' 36' Oak WSW 111.2'	Iron 10' Oak SSW 34.6' 24' Oak S.E. 32.8' Anch. post S. 40.3' 12' Oak E.S.E. 50.4'
14.2	7		8		9
Plow point, stone 8' Maple S.S.E. 61.54' 30' Oak E.N.E. 49.23'					
11.89 Plow point, brick, iron 20' Hickory W. 76.6' 12' Hickory NNE 135.5' Anch. post W. 33.0' Fence E. 31.3'					
18			17		16
1" Pipe Road sign NE 45.0' 18' Oak E.N.E. 114.1' USC&GS bn S.E. 44.7' 8' Oak S.S.W. 66.4'		1 1/4" Iron (1871) HW Iron N.E. 42.25' 40' Oak S.S.E. 72.74' T.P. N.W. 36.00'	RR Spike (1871) Oak Strip 1/4" x 1/2" x 70.45' 18' Ash W.S.W. 69.85' 20' Ash W.N.W. 40.45'	1" Iron (1871) 26' Hickory N.E. 65.22' 22' Hickory E.N.E. 55.18' G.P. N.W. 64.60'	Iron, Stone, brick 12' Butternut N 86.4' 24' Oak S.S.E. 51.8' 12' Hickory E.N.E. 92.6' Iron N 33.0'
19			20		21
Stone, tile, brick 7.9' Stone, tile 18' Hickory NW 48.8' 18' Pignut NNW 60.5' 24' Maple S.E. 76.4' 18' Maple S.E. 64.6' 20' Hickory S.W. 151.0' 15' Stump S.E. 63.6'					Iron 30' Cherry N 25.7' 36' Willow NE 45.0'
19.5' Stone, tile 25' Hickory S.E. 52.7' 19' Stump E.S.E. 74.2' 24' Maple W.S.W. 34.3' Stump S.W. 47.5' Iron W. 33.0'	Stone, tin on top 44' Oak NNW 33.0' Axle shaft N 33.0' 3' Elm E.N.E. 66.2' 24' Elm WNW 107.5'	Stone 18' Hickory N.E. 44.7' 18' Apple S.W. 67.0'		RR Iron SW cor. building school E. 85.7' S.E. cor. black house W. 79.0' 20' Maple S.S.E. 73.5'	Stone 24' Oak N.E. 45.7' 18' Oak W. 51.0' 6' Butternut S.E. 36.6'
17.0' Stone 40' Oak E. 73.4' 20' Hickory S.E. 96.9' 20' Maple S.E. 71.7' 18' Hickory S.W. 48.5' 9' Walnut NNE 93.6'				Iron 18' Maple E.S.E. 30.85' 18' Maple E.N.E. 80.05' T.P. E. 47.85'	3/4" Iron 82.5' S.E. Tomplate 30' Elm 6' Elm P.P.
31			32		33
				Iron 48' Oak S.E. 31.75' 20' Oak NNW 41.0' 14' Walnut N.E. 49.75'	

M5

( Eaton County )

M9

18' Walnut S 120.8'  
6' Elm WSW 94.3'  
8' Walnut ENE 98.8'

# TIN R<sup>2</sup>W 3NONDAGA

gham County)

(1875) NW 71-L S 66.75-L			Drag room, tile 18" Elm N.E. 42.2' Anch post E. 44.0' N.E. cor. log house SW 81.1'
3	Stone 18" Cherry E. 34.8' Fence post NW 42.2'	2	Pipe, crockery 8" Cherry E. 177.1' 10" Ash N. 192.4'
			Bolt, brick, stone Anch post S. 33.0' Iron bar N. 33.0' 18" Maple WSW. 87.2'
10		11	12
			Stone 24" Maple SW. 87.5' 15" Walnut NW. 61.6' Anch post S.E. 35.2'
15		14	13
W 49.5' NE. 79.4' E. 40.1' W 49.6'	1" Pipe 18" Elm N.E. 33.1' 18" Oak S.S.W. 93.2' 12" Hickory SW. 38.2' 24" Hickory WNW. 70.7'  Sleigh shoe 14" Elm W 18.5' 12" Hickory E. 31.8'	Stone 18" Oak NW. 59.7' 14" Elm N.E. 160.9'	14" Maple NE. 31.2' 12" Oak SW. 39.6'
22	Iron S. 32.0' Fence on road S	23	24
W 108.0' NE. 52.9' 104.6'	Stone, crockery 14" Hickory S 350.0' 10" Hickory SW. 101.1'	Well post 40" Oak ESE 129.0' Anch post 33.0' Pump NNE 132.5'	1/2" Iron, stone 26" Locust NW 47.85' 30" Elm NNE 68.95' 14" Maple ENE 86.27' TP S 63.85'
27	Stone, crockery, stake SW cor. school N.E. 88.5' Cor. post NW. 37.0' Cor. post SW. 42.2'	Stone, crockery 36" Elm SW. 13.5' 20" Maple S.E. 53.0' 24" Oak N.E. 44.0'	
1/2" Plank & 1/2" N. 58.22' E. 58.14' S. 56.24'	Stone, crockery 20" Hickory N.E. 22.0' 24" Elm ESE 117.0'	26	25
34	35		36

(T.I.N. R.1/W. Leslie Twp., Ingham County)



ONONDAGA

Man. Box  
14" Stump S. 30.4'  
8" Hickory S.E. 40.9'  
6" Maple NNE 23.0'  
R.P. NNW 30.3'

W 31.5'  
SE. 42.0'

16" Elm N.E. 32.5'  
R.R. sign W. 76.5'  
E. end of road 38.0'