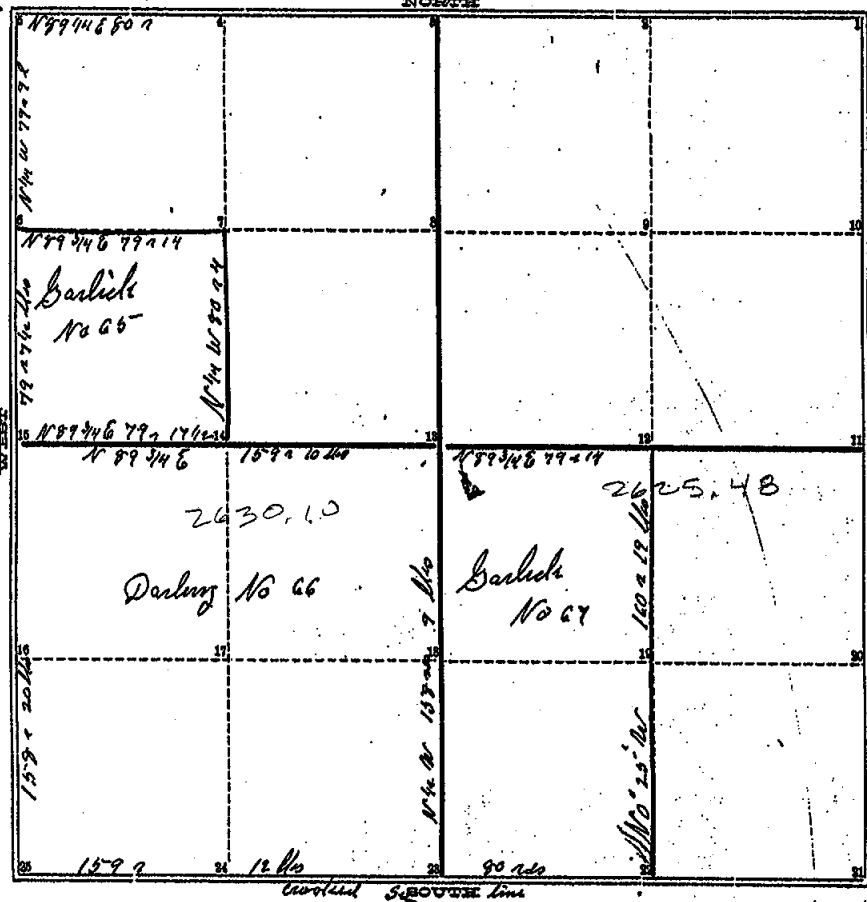


COUNTY SURVEYOR'S RECORD,

TOWN One NORTH, RANGE Three West, MERIDIAN OF MICHIGAN.

SEC. Twenty Five



Page 18 Oct 1

TOWN One NORTH, RANGE Three West, MERIDIAN OF MICHIGAN.

- 1
- 2
- 3
- 4 SW cor of School House N 41 1/2 E 179 1/2 lks
- 5 B. Adams S 7 1/2 W 195 lks
Swampy Oak 18 N 27 1/2 E 39 lks
- 6 W Oak 16 N 8 1/2 E 40
W Oak 24 S 79 W 15-
- 7 W Oak 18 S 89 E 17
- 8
- 9
- 10
- 11 W Oak 20 S 45 E 130 lks
- 12 W Oak 24 S 37 W 15 lks
W Oak 16 N 27 1/2 E 54
- 13 Ely Oak 16 S 46 1/2 W 31 1/2 lks
W Oak 12 S 21 1/2 W 27 1/2 lks
- 14 W Oak 14 S 8 1/2 E 40
Blm 18 North 5 lks
- 15 Maple 10 S 69 E 22
- 16
- 17
- 18
- 19
- 20
- 21 W Oak 5 N 78 1/2 E 36 lks
- 22 W Oak 9 E 31 E 35 lks
Poplar 6 S 60 W 30 lks
- 23 W Oak 4 N 50 1/2 E 17

24 Blm 16 N 1 W 12
25 Blm 9 S 12 W 26 lks

See Back

Vol 1 1918
A-JACKSON
OCT 1939

INGHAM COUNTY, MICHIGAN.

TOWN Oshtemo NORTH, RANGE 3rd West, MERIDIAN OF MICHIGAN.

Surveyed and recorded Oct 14th 1839 by Jackson County Surveyor for
the County of Ingham Var $3^{\circ} 20' E$

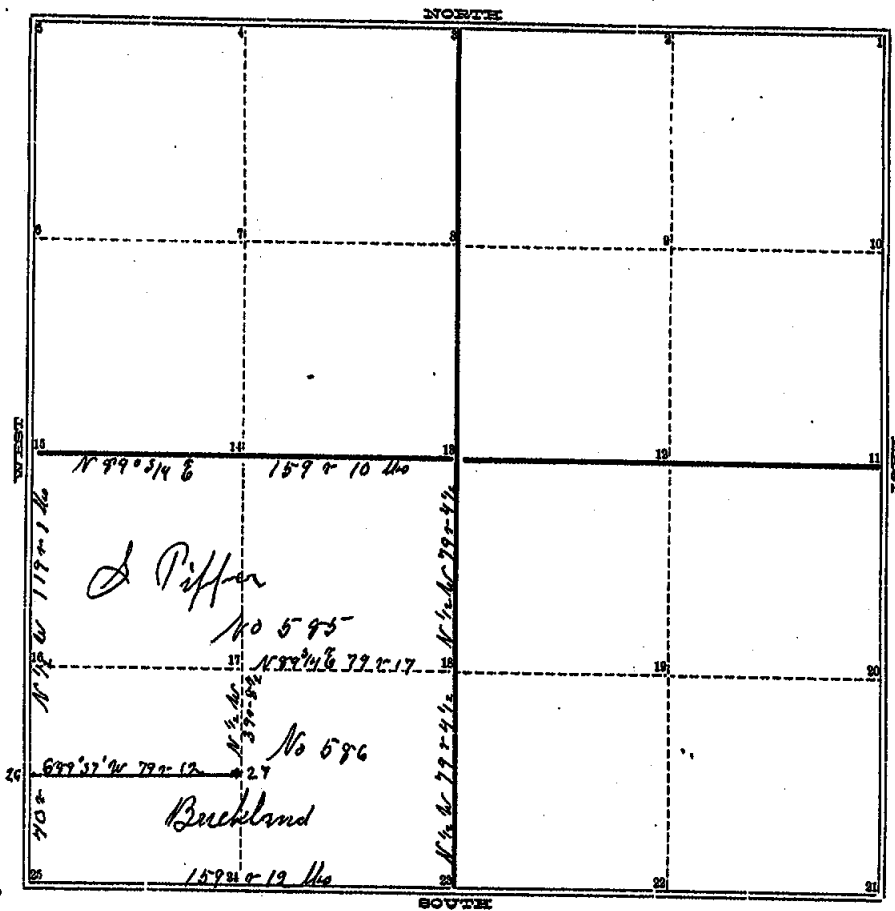
This section corner 23+24+25+26 I located from the authority and at the best of my
ability without partiality to any one April 25th 1866 Magnetic Variation $2^{\circ} 14' E$
W. H. Baynor County Surveyor

At No 1 the NE corner of the section I find the original corner and set stone
from which an Elm 24 inch Bears N. $36^{\circ} 14' W$ 43 the June 3th 1878 A P Drake Co Surveyor

COUNTY SURVEYOR'S RECORD,

TOWN *Oshtemo* NORTH, RANGE *Two West*, MERIDIAN OF MICHIGAN.

SEC. 25



P 124062

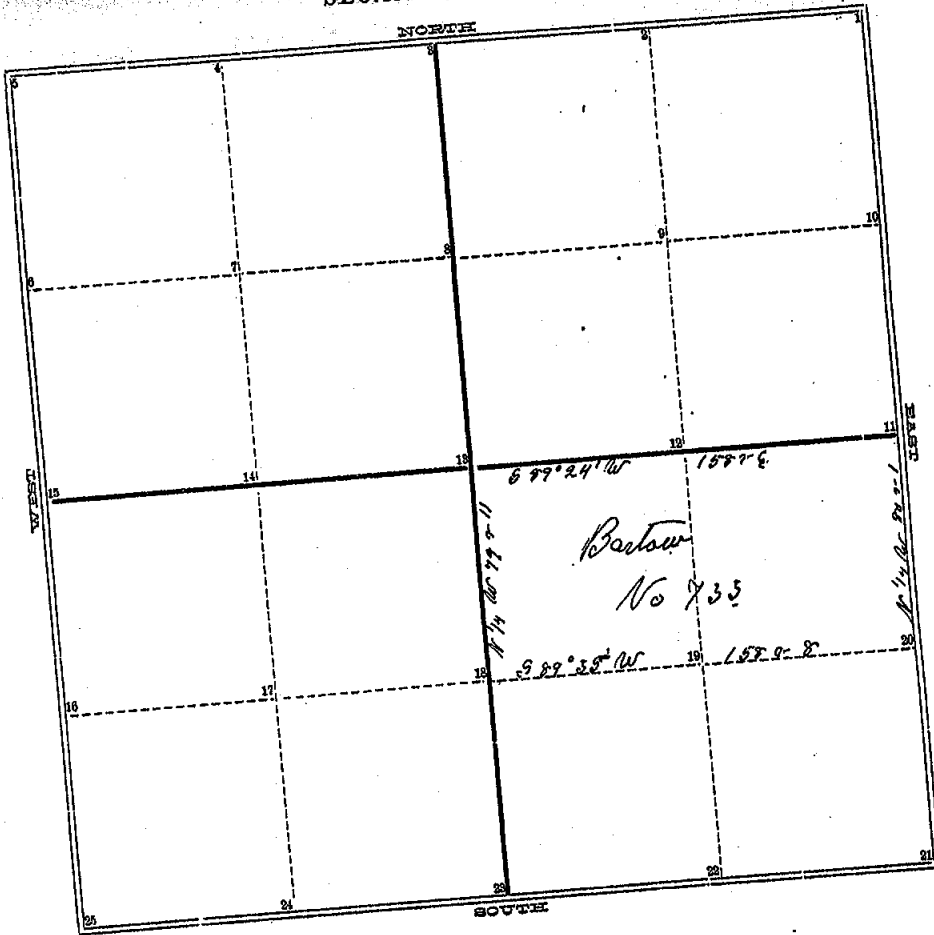
TOWN *Oshtemo* NORTH, RANGE *Two West*, MERIDIAN OF MICHIGAN.

- 1
- 2
- 3
- 4
- 5
- 6
- 7
- 8
- 9
- 10
- 11
- 12 *Bark 16 N 27 1/2 E 34*
- 13 *elm 16 S 46 1/2 W 31 1/2*
- 14 *elm 18 North 5*
- 15 *Maple 10 S 60 E 22*
- 16 *W Oak 28 S 21 1/2 W 25 1/4*
- 17 *D O 2 S 89 1/2 E 36*
W Oak 22 N 27 1/2 E 61
- 18 *elm 14 N 51 1/2 W 38 1/2*
- 19
- 20
- 21
- 22 *Poplar 6 S 60 W 30*
- 23 *B Oak 8 N 50 1/2 E 17*
- 24 *elm 16 N 1 W 12*
- 25 *D O 9 S 12 W 26*
- 26 *W Oak 24 S 6 E 47*
- 27 *D O 13 N 54 1/2 E 70 1/4*
W Oak 14 S 67 3/4 W 93
- 28 *D O 18 N 53 E 45 1/2*

Nov 16, 1852
A. Jackson

Vol 299 124

SEC. 24



P 194 No 2

TOWN One NORTH, RANGE Three West, MERIDIAN OF MICHIGAN.

- 1 24
- 2 25
- 3
- 4
- 5
- 6.
- 7
- 8
- 9
- 10 Mch 15 N 10 W 53
- B 11 June 6 S 14 W 59
- 12 BA 15 N 67 E 25 1/2
- A 13 DO 13 S 57 W 35
- 14
- 15
- 16
- 17 Jan 10 S 24 1/4 E 62 3/4
- D 18 DO 12 N 78 W 50
- 19 Rod 30 S 29 W 69 1/2
- C 20 DO 14 S 47 1/2 E 65 1/2
- E 21 Ebn 27 N 36 1/4 W 43 1/2. Drake
- 22
- 23

VOL 2 P 9 194
A Jackson Apr 1854

INGHAM COUNTY, MICHIGAN.

TOWN *Orin* NORTH, RANGE *Two West*, MERIDIAN OF MICHIGAN.

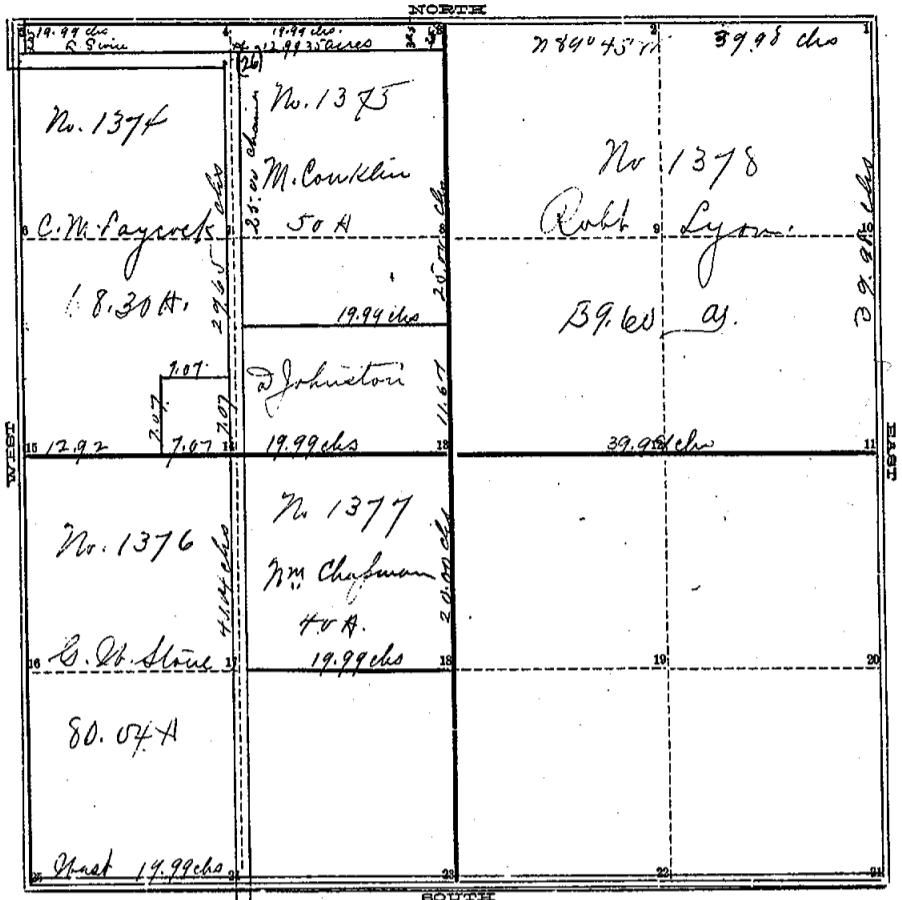
Run by the true Meridian Or 2 1/2 E
Surveyed and Recorded April 8th 1854
By A. Jackson Co Surveyor

At E. corner I find the original section corner and describe as from stake June 3rd 1878
A. P. Drake Co Surveyor

COUNTY SURVEYOR'S RECORD

TOWN One NORTH, RANGE Two East, MERIDIAN OF MICHIGAN.

SEC. 23



TOWN _____ NORTH, RANGE _____, MERIDIAN OF MICHIGAN.

- 1
- 2
- 3
- 4
- 5
- 6
- 7
- 8
- 9
- 10
- 11
- 12
- 13
- 14
- 15
- 16
- 17
- 18
- 19
- 20
- 21

Vol 3 pg 63
 Brown
 Sep. 1872

INGHAM COUNTY, MICHIGAN.

TOWN Blue NORTH, RANGE Two West, MERIDIAN OF MICHIGAN.

Survey of the north half and the south west quarter of section No Twenty Three in Township No One North of Range No Two West, as represented in the accompanying plat, (on a scale of which is 13 chains to one inch); in which the bearings and distances of the lines, the names of owners and the number of acres covered by each, the position of roads, and letters of reference to lines and corners are respectively given.

The corners (not all witnessed) are described as follows

- (5), (27), (28), (29), (30), (31), (32), (33), (8), (25) and (13) are posts without witnesses.
- (4) Post from which a Walnut 4 inches diam. bears $N 23^{\circ} E$ 21-1/2 "
- (3) " " " " " Apple 7 " " " " $S 64^{\circ} 1/2 W$ 56 "
- " " " " " B Ash 13 " " " " $N 66 E$ 17 1/2 "
- " " " " " " " " " " $S 19$ 23 3/4 "
- (26) " " " " " Locust 20 " " " " $N 10^{\circ} 50' E$ 41 1/2 "
- (15) " " " " " Hickory 9 " " " " $S 44 E$ 38 "
- (14) " " " " " S. Oak 18 " " " " $S 85 1/2 E$ 82 3/8 "
- " " " " " " " " " " $N 85 W$ 65 3/4 "
- (21) " " " " " S. in cor S. in house " " " " $N 41 1/2 E$ 179 1/2 "
- " " " " " B Cherry 6 " " " " $S 7 1/2 W$ 193 "
- (1) A stone corner.
- (11) Post from which a N Oak 6 " " " " $S 44 E$ 79 "
- " " " " " " " " " " $N 88 1/2 W$ 87 3/4 "
- " " " " " " " " " " $N 83 W$ 44 "
- (23) " " " " " " " " " " $N 13 7/10 W$ 112 "
- " " " " " " " " " " $N 19 W$ 2nd 14 "
- (24) " " " " " Tamarac 8 " " " " $S 19 W$ 63 3/8 "
- (17) " " " " " N Oak 18 " " " " $S 52 1/2 E$ 105 1/2 "

Run by the true Meridian Magnetic Variation $1^{\circ} 55'$ East
 Survey Sept 7, 1872, by T. J. Brown, Dep. Comm., for Ing Co., Mich.