

term 1st and 2nd witnesses named in the following record refer to the first or second witness of the original Good survey as recorded in this book.

A A-1 Found brick for corner (had been kept up) and remains of 1st witness, fences agreeing. Elm 24 N 42 1/2 W 57 1/4
W. Oak 13 S. 85 1/2 W 85 3/4

B-1 Elm 20 N 40 3/4 E 43 1/2 May 19/86

a Found stake at corner set by W. Croul County Surveyor
W. Oak 24 S. 80 3/4 E 75 3/4
Poplar 11 N 1 1/2 E 35 1/2 May 19/86

Post in low spot 6 inches water over it. Set tall stake aside of it

B C-1 Found traces of remains of 1st witness and Onondaga corner 226 lks west agreeing - corner gone.
B. Oak 24 S 4 1/2 E 393
Do 18 S 81 E 255 May 13/86

b D-1 Set post at average distance 40.28 1/2
Sassafras 8 N 71 E 169 3/4
Y. Oak 16 S 88 W 648 May 14/86

C E-1 Corner gone. Found tap root of 1st and good remains of 2nd witness. Elm 8 N 79 1/4 W 249 1/2
W. Oak 15 S 5 1/4 W 392 1/2
164.67
259.05
May 14/86

c c-1 In Grand River

D b-1 Corner and witnesses gone - Found Onondaga Corner and root of old line tree 25.11 West. Set post 188 lks west of Onondaga corner - fences agreeing (W. Oak 15 S 73 1/2 E 98 1/2
Do 16 S 9 E 142
124.1
65.0
93.7
Dist. 2/85

d H-1 Set post at average distance 40.03
Ash 9 N 52 1/2 E 51 1/2 June 7/86
Elm 10 N 82 3/4 W 237 1/2

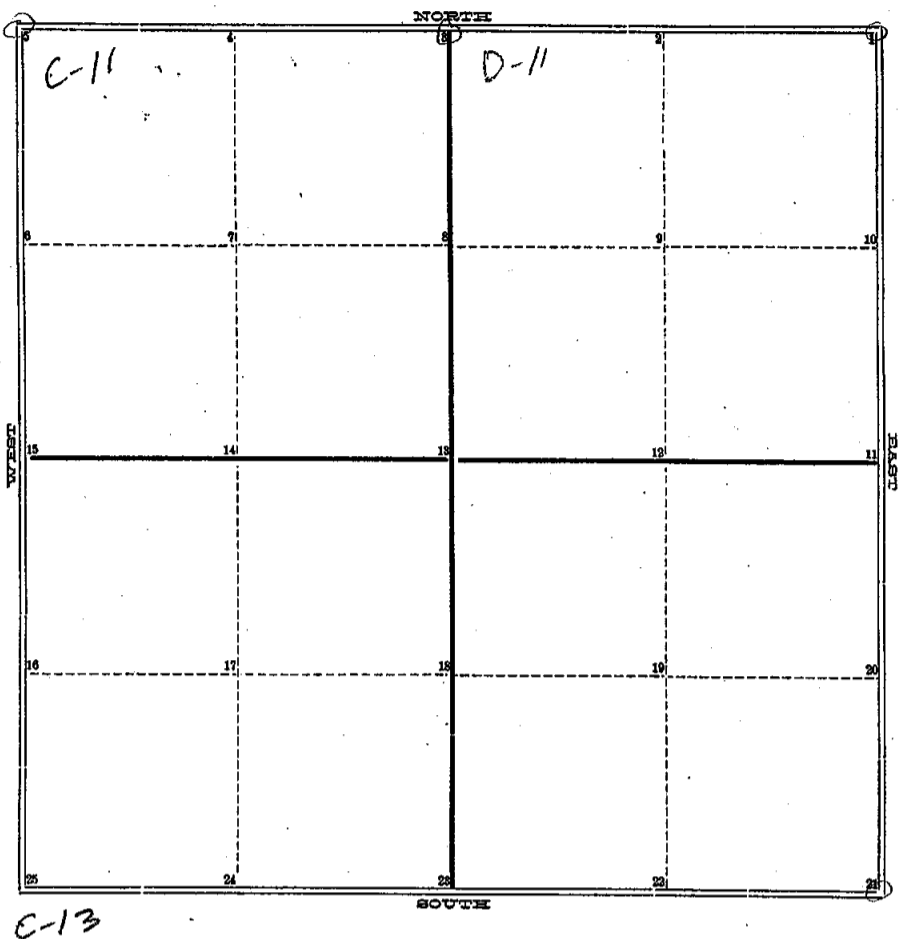
E E-1 Found bottom of original stake, and remains of 2nd witness also excellent root of stump of line tree 8.39 west of Onondaga corner
Hickory 6 S 38 1/4 W 48 1/4
Do 6 S 30 E 45 1/4 Dec. 1/85

e e-1 Set post pro rata (121 1/2 West of Onondaga in post
Ash 12 S 11 W 36
Do 10 N 27 1/2 E 163 1/2 April 20/86

COUNTY SURVEYOR'S RECORD,

TOWN 1 NORTH, RANGE 7 W, MERIDIAN OF MICHIGAN.

SEC. 31



Sec 31

TOWN _____ NORTH, RANGE _____, MERIDIAN OF MICHIGAN.

- E-11 1 1/2 in tile *Iron Rod* Maple 10" S-E 32' 24
- 2 25 Stake 1/2 Oak 6' S-W 19'
- D-11 3 3/4 in tile 1/2 Oak 30" S-W 3' 18" S-E 30.5'
- 4 C-13
- E-11 5 Stake in tile.
- 6
- 7
- 8
- 9
- 10
- E-12 11 1/2 in with stone around. E-12
- 12
- 13
- 14
- 15
- 16
- 17
- 18
- 19
- 20
- E-13 21 1/2 in by stone well.

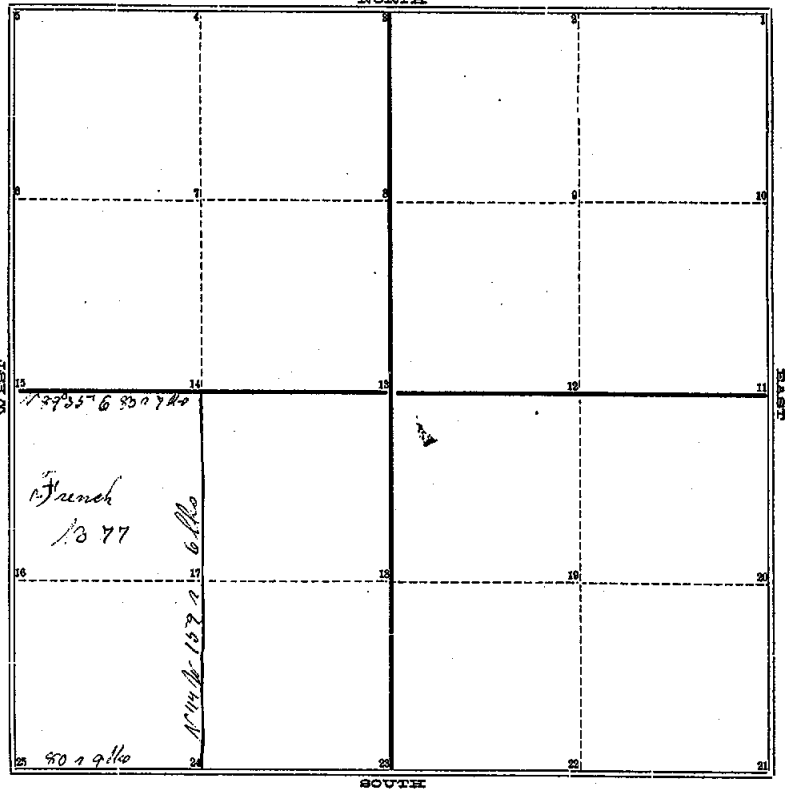
R. J. ROBB
No. DATE

COUNTY SURVEYOR'S RECORD,

TOWN One NORTH, RANGE Three West, MERIDIAN OF MICHIGAN.

SEC. Thirty Three

NORTH



sec 31

C-12

C-13

Page 20 of 1

TOWN One NORTH, RANGE Three West, MERIDIAN OF MICHIGAN.

- 1
- 2
- 3
- 4
- 5
- 6
- 7
- 8
- 9
- 10
- 11
- 12
- 13
- 14
- 15
- 16
- 17
- 18
- 19
- 20
- 21

130 a 24 N 89 1/2 E 170 1/2
 24 W Oak 16 S 70 W 54 1/2
 13 Oak 6 m N 77 W 20 1/2
 C-13 28 W Oak 18 m N 40 E 79 1/2

A. JACKSON
 APRIL 29, 1840

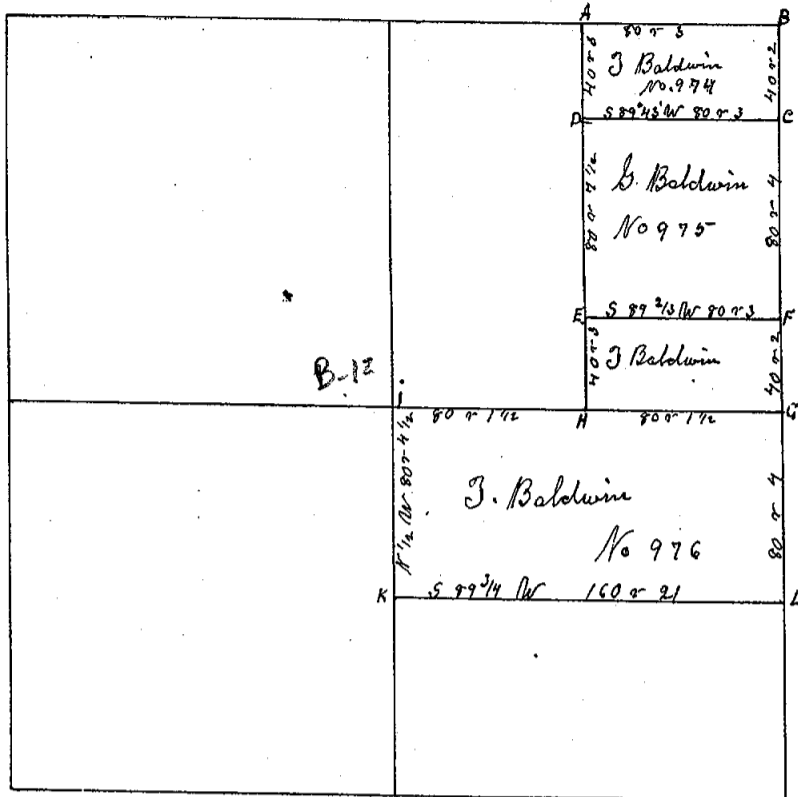
13 W Oak 30 N 11 1/2 E 18 1/2 1/2
 14 Hickory 10 S 70 W 14 1/2 1/2
 13 Oak 24 N 27 W 16 1/2 1/2
 15 W Oak 20 m S 65 E 15 1/2 1/2 C-12

COUNTY SURVEYOR'S RECORD,

TOWN One NORTH, RANGE Two West, MERIDIAN OF MICHIGAN.

Sec 31

C-11



C-12

P 299 Ad 2

TOWN Two NORTH, RANGE Two West, MERIDIAN OF MICHIGAN.

- 1
- 2
- 3
- 4
- 5
- 6
- 7
- 8
- 9
- 10
- 11
- 12
- 13
- 14
- 15
- 16
- 17
- 18
- 19
- 20
- 21
- 22

24

25

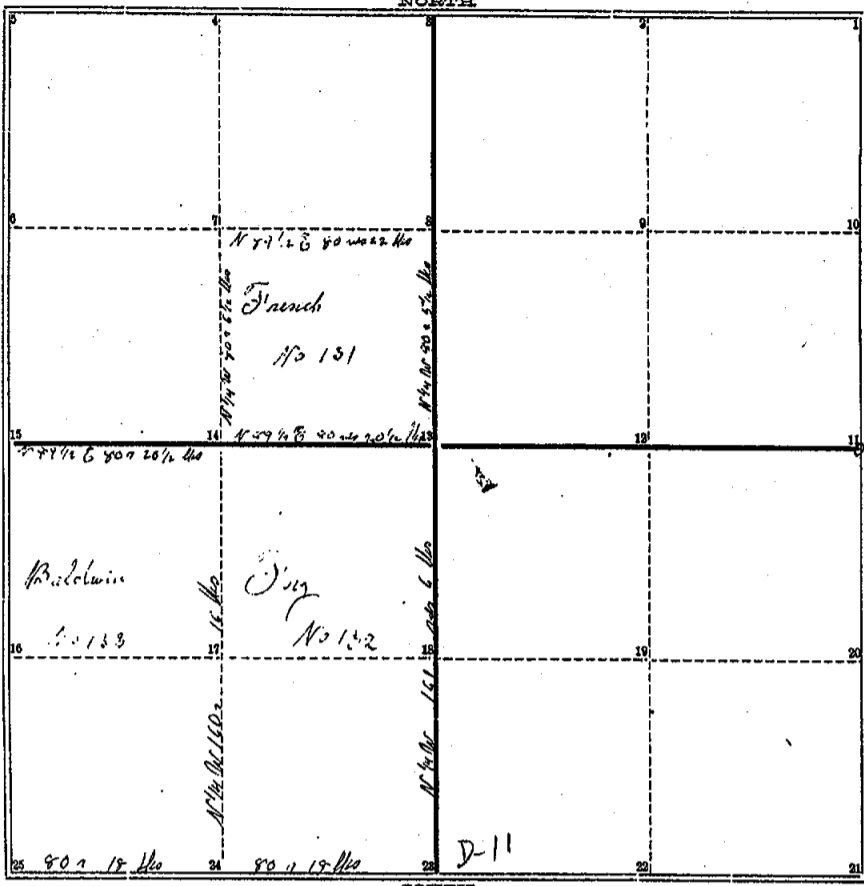
- A B Oak 24 S 45 E 20
- W Oak 14 N 70 W 22
- A Oak 4 N 68 1/2 W 35 1/2
- C-11 B Oak 12 N 89 E 4.85
- B Oak 4 S 15 1/2 W 22.0
- No other trees
- D W Oak 11 N 57 1/2 E 17
- D O 4 S 78 E 9 1/2
- D Oak 9 S 61 1/2 E 29
- D O 7 N 49 E 29
- D Oak 12 N 32 3/4 W 98
- D O 12 N 46 1/2 E 75
- W Oak 24 S 57 1/2 W 87 1/2
- W Oak 20 N 20 1/2 S 135
- E Oak 22 N 32 1/2 W 57
- H A Oak 13 N 72 1/2 E 41
- B-12 J Oak 11 N 28 1/2 E 25 1/2
- K D O 14 S 27 E 27
- L W Oak 24 N 67 W 30
- D O 5 N 69 1/2 E 42

A. Jackson
Sept 25, 1856

COUNTY SURVEYOR'S RECORD,

TOWN Law NORTH, RANGE Two West, MERIDIAN OF MICHIGAN.

SEC. Twenty Nine



R.R. line
88 1/2 ft N.E. to school
75 3/4 NW to Hickory

Sec 31

E-11
tile 55 1/2 NE 10" Hickory
32 52 maple

Page 23 of 1

TOWN Law NORTH, RANGE Two West, MERIDIAN OF MICHIGAN.

- 1
- 2
- 3 Sycamore 30 S 37 3/4 E 80 lks
- 4
- 5
- 6 W Oak 14 N 26 1/2 E 15 3/4 lks
- 7 No other tree
- 8 B Oak 12 S 89 1/4 W 90 lks
- 9 No other tree
- 9
- 10
- 11
- 12 W Oak 22 - N 26 1/2 E 17 1/2 lks
- 13 W Oak 24 N 37 W 80 lks
- 14 W Oak 22 N 40 1/2 E 102 lks
- 14 W Oak 24 N 26 W 57 1/2 lks
- 15 W Oak 14 South 6 1/2 lks
- 15 do 12 N 7 E 17 lks C-10
- 16
- 17
- 18
- 19
- 20
- 21
- 22 S W Oak 10 N 24 E 6 1/2 lks
- 23 do 14 S 38 W 38 1/2 lks

- 24 Poplar 12 in N 60 2/3 W 79 lks
- 24 on other tree
- 24 Spruce 6 in N 88 1/2 E 383 lks
- 25 W Oak 24 in North 571 lks C-11

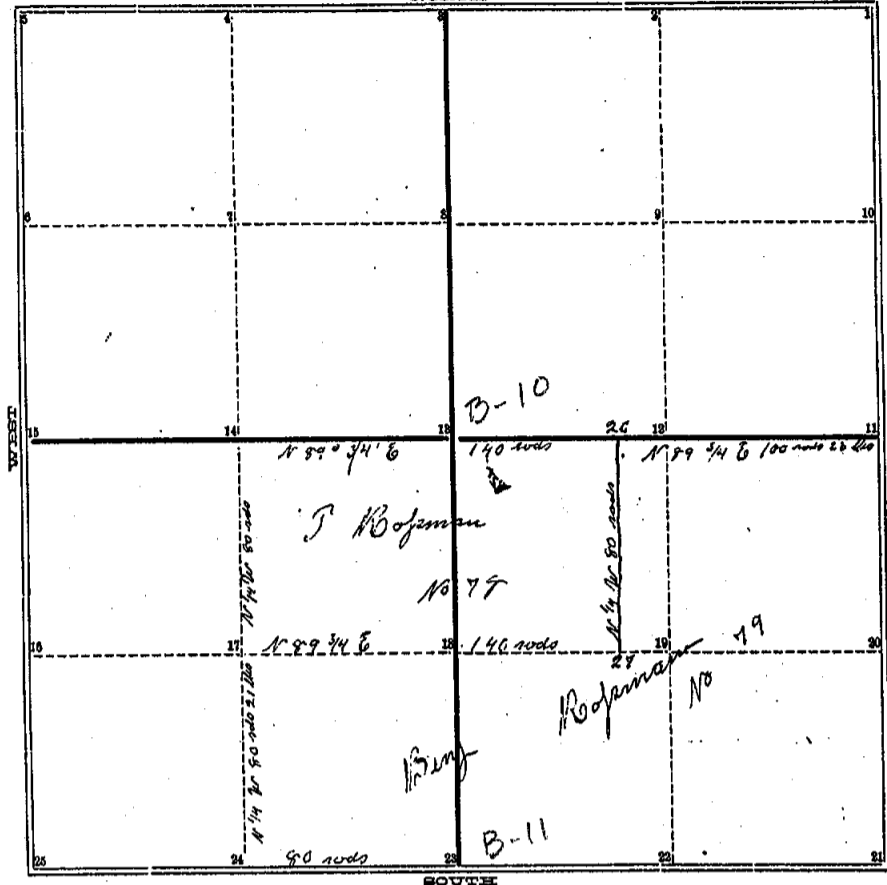
A. JACKSON
Feb 24 1841

D-11

COUNTY SURVEYOR'S RECORD,

TOWN One NORTH, RANGE Three West, MERIDIAN OF MICHIGAN.

SEC. Thirty



Page 21 of 1

TOWN One NORTH, RANGE Three West, MERIDIAN OF MICHIGAN.

- 1
- 2
- 3
- 4
- 5
- 6
- 7
- 8
- 9
- 10
- 11 W Oak 14 South 6 1/2 lks C-10
- 12
- 13 B-10 No Wit
- 14 W Oak 22 N 15 W 65 lks
- 15 Poplar 12 S 63 W 144 lks
- 16
- 17 W Oak 12 N 27 1/2 E 10 lks
- 18 W Oak 12 S 56 E 53 lks
- 19
- 20
- 21 W Oak 24 North 571 lks C-11
- 22
- 23 Jamsack 12 N 50 E 112 lks B-11
- 24 Jamsack 20 S 36 N 5109 lks
- 25
- 26
- 27
- 28
- 29
- 30
- 31
- 32
- 33
- 34
- 35
- 36
- 37
- 38
- 39
- 40

A. Jackson
APRIL 8 1840