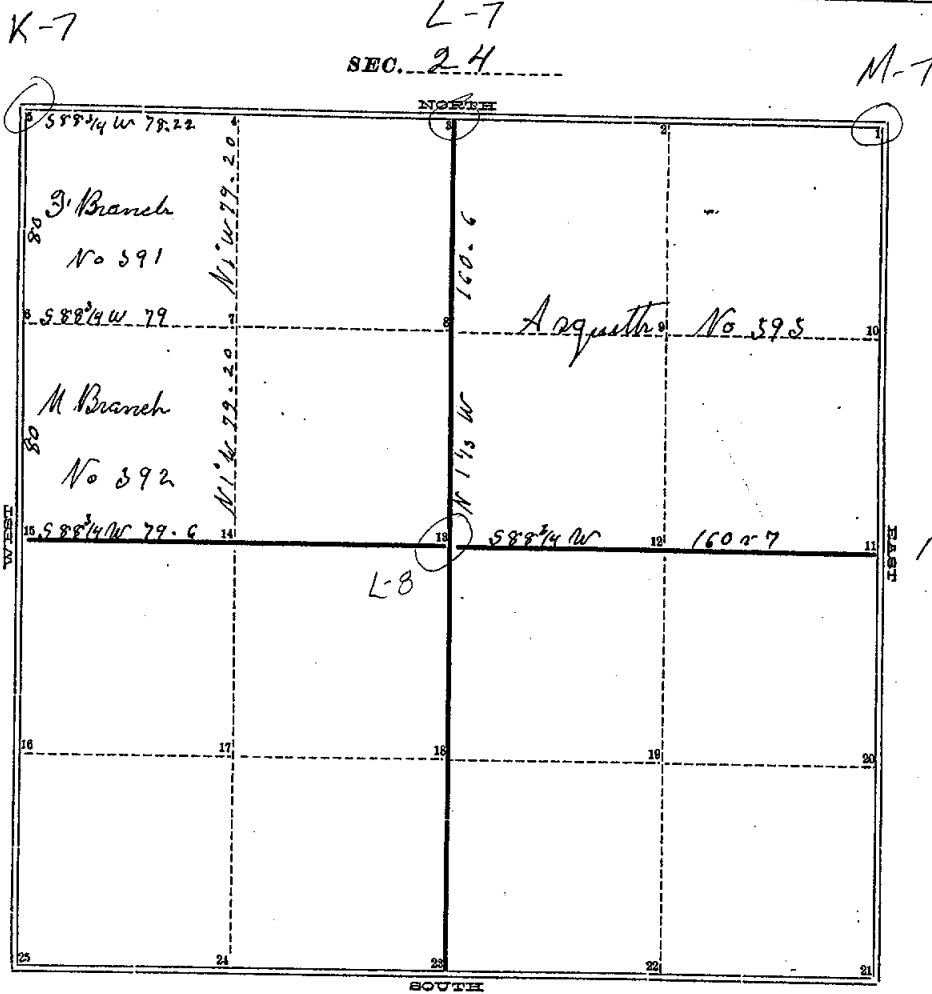


COUNTY SURVEYOR'S RECORD,

TOWN One NORTH, RANGE Two East, MERIDIAN OF MICHIGAN.



1960

TOWN One NORTH, RANGE Two East, MERIDIAN OF MICHIGAN.

- d 1 W Oak 36 N 60 W 23
- 1 P O 32 S 62 W 21
- 24
- 2 W Oak 11 S 51 E 65-
- 25
- e 3 P O 32 S 72 W 47
- W Oak 16 S 70 E 9
- f 4 P O 27 N 44 W 25
- W Oak 14 N 22
- a 5 P O 13 N 88 W 20
- 5 Oak 15 N 34 1/2 E 96
- h 6 S W O 15 N 13 W 127
- W Oak 14 S 51 E 27
- g 7 R Oak 15 N 33 1/4 E 16
- 8
- 9
- 10 W Oak 14 S 84 W 24
- 11 P O 18 N 54 W 63
- 12 W Oak 18 N 40 1/2 S 8-
- f 18 P O 16 S 9 E 52
- 9 Oak 16 N 5 W 30
- k 14 P O 16 N 64 E 27
- W Oak 17 S 13 1/2 E 20 W
- i 15 B Oak 10 S 19 W 195
- 16
- 17
- 18
- 19
- 20
- 21

INGHAM COUNTY, MICHIGAN.

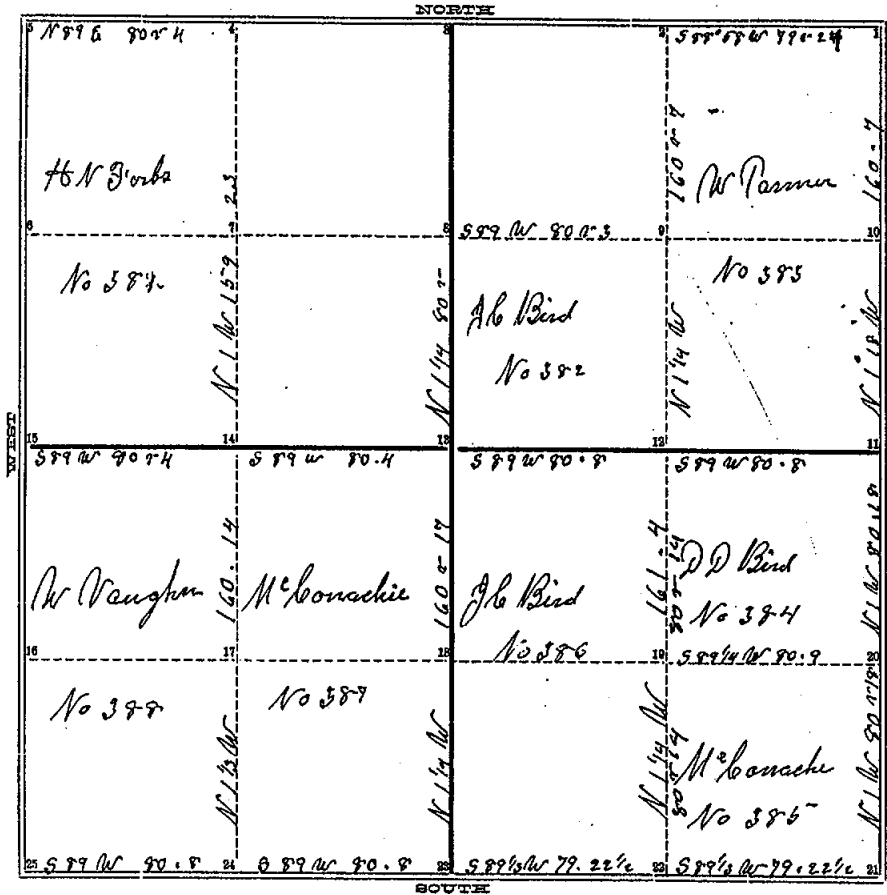
TOWN Out NORTH, RANGE Two East, MERIDIAN OF MICHIGAN.

Run by the true Meridian No 346 Co
Surveyed and Recorded Feb 14 1840
by A Jackson Geo Surveyor

COUNTY SURVEYOR'S RECORD,

TOWN One NORTH, RANGE Two East, MERIDIAN OF MICHIGAN.

SEC. 25



194 Oct 1

TOWN One NORTH, RANGE Two East, MERIDIAN OF MICHIGAN.

- 1 Oak 13 S 11 1/2 W 20
- d 1 Span 2 N 80 W 12 1/2
- Mr Oak 20 N 25 1/2 E 17 1/2
- c 2 D 0 18 S 13 1/2 W 7 1/2
- 3 W Oak 20 S 8 W 116
- b 4 D 0 16 S 9 1/4 E 122
- W Oak 19 S 6 1/2 W 280
- a 5 D 0 8 N 8 1/2 W 294
- 6
- 7 W Oak 14 S 6 1/2 W 6 1/2
- f 8 D 0 10 S 7 1/2 W 18
- Mr Oak 12 N 6 1/2 W 31
- 8 9 D 0 14 S 4 1/2 E 56
- 10
- 11 D 0 20 S 17 1/2 W 71
- W Oak 13 N 2 1/2 E 57
- k 12 D 0 12 S 2 1/2 E 74
- W Oak 13 N 10 W 49
- i 13 D 0 28 S 15 W 19
- W Oak 11 S 2 1/4 W 15 1/2
- h 14 D 0 10 N 50 W 44 1/2
- W Oak 14 N 17 1/2 W 54 1/2
- g 15 D 0 30 N 5 1/2 W 40 1/2
- 16
- 17
- 18
- g h 12 N 1 1/2 E 16
- m 19 A Oak 10 S 2 1/2 W 11 1/4
- # Oak 16 S 4 1/2 W 74
- n 20 No other hwy
- W Oak 16 S 19 W 39
- s 21 Jan 9 N 5 1/4 W 115
- g Oak 16 S 16 E 51
- R 22 D 0 20 S 8 1/4 W 75
- B Oak 18 N 8 1/4 E 58
- a 23 D 0 30 S 6 1/2 W 85

- W Oak 11 S 3 1/2 E 44
- p 22 D 9 24 N 6 1/2 W 114
- W Oak 15 S 3 1/2 W 34
- 0 25 D 0 14 N 2 1/2 E 46

WINGHAM COUNTY, MICHIGAN.

TOWN One NORTH, RANGE Two East, MERIDIAN OF MICHIGAN.

Run by the true Meridian $N 3^{\circ} E$
Ranged and Referred March 5, 1846
by A Jackson Geo Surveyor