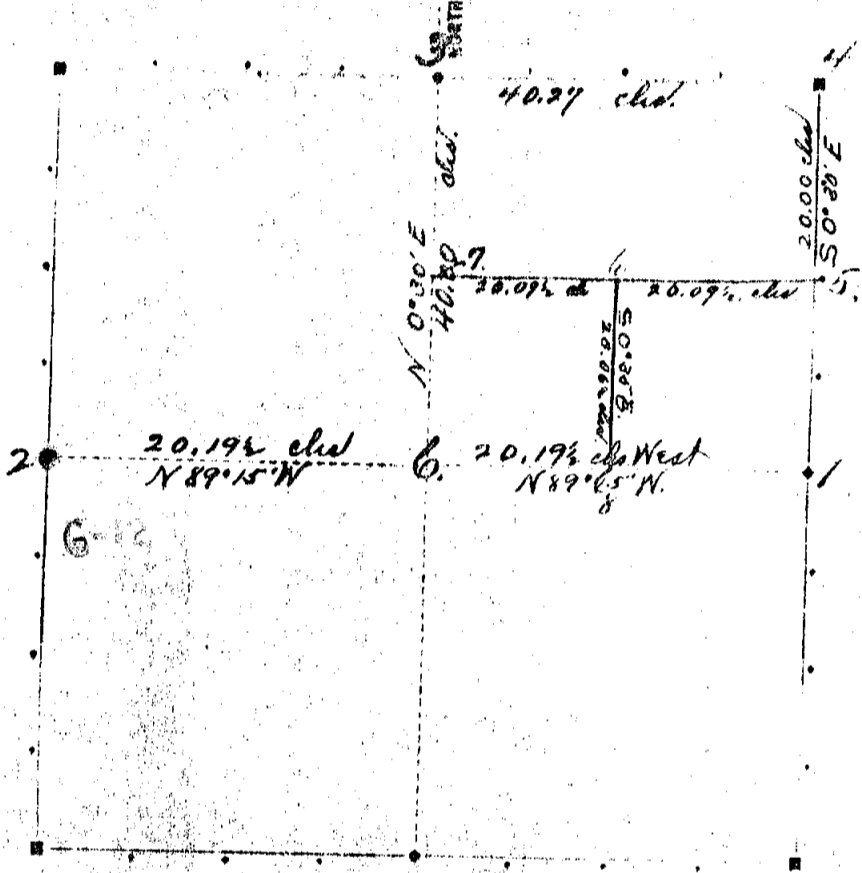


SOURCE: FOLDER # P.

TRANSCRIBED from ORIGINAL on file at REMON. OFFICE  
 DUPLICATE

Town 1, Range 2 E.

Section No. 34



Sec.	Timber.	Diam.	Bearing.	Links.	Sec.	Timber.	Diam.	Bearing.	Links.
1	Saw	4	N 12 E	62					
6	B. Oak	6	S 37 E	157					
	Dr.	6	S 54 E	158					
		9	S 16 N	216					
2	S. 3' Stone	7 1/2"	long						
	3 X 4" R. chd.								
3	W. Oak	20	N 27 E	417					
	Sungar	4	S 62 N	66					
4	B. Oak	7	N 63 E	107					
	Maple	12	S 11 E	85					
5	B. Oak	10	N 1 E	290					
6	Stone Set								
7	Stone Set								
8	Stone Set								

Run by the true meridian. Magnetic variation            degrees            minutes

Surveyed the 31st day of August 1897 by

*Richard E. Stata*  
 County Surveyor of Ingham County, Mich.

*From field notes*

SEC. 34

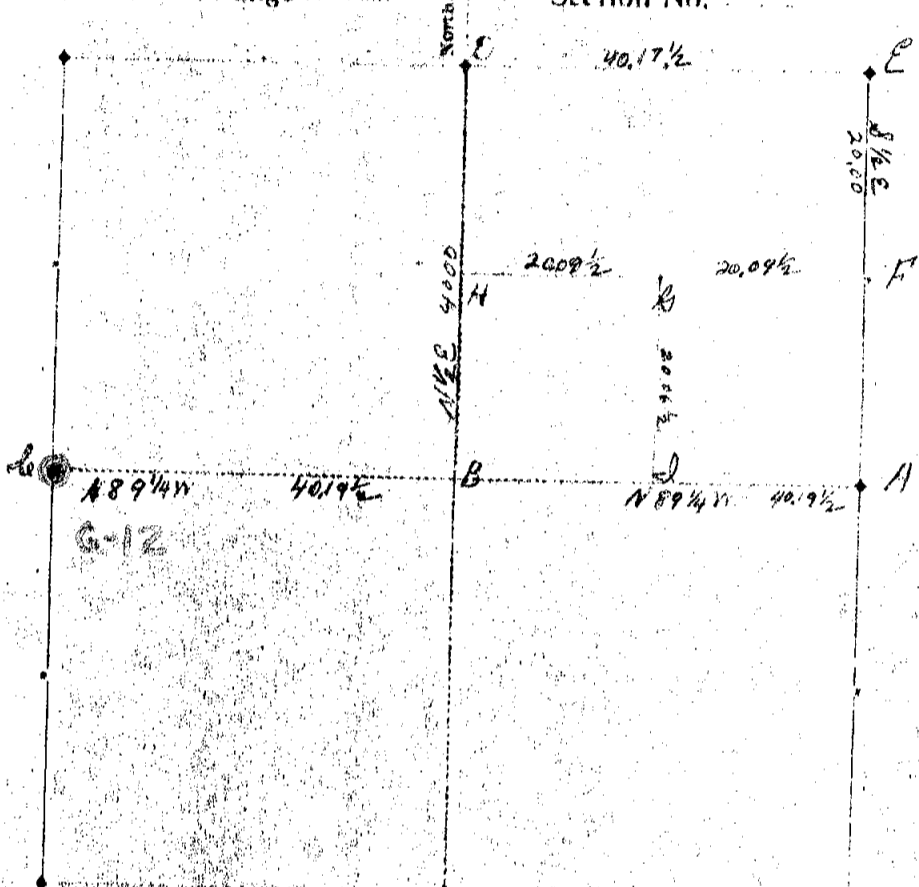
42

SOURCE: FOLDER # 1

P. 43

TRANSCRIBED from ~~XXXXXX~~ DUPLICATE on file at REMON. OFFICE

Town / N. Range / E. Section No.



Section	Timber	Diam	Bearing	Links	Section	Timber	Diam	Bearing	Links
A	Pine	4	N 12 E	63					
B	B Oak	6	S 33 E	15 1/2					
C	Stone 7 1/2 inches long with a 3x4 butt	8	S 16 W	21 1/2					
D	W Oak	20	N 27 E	417					
E	Sugar	4	S 62 1/2 W	66					
F	B Oak	7	N 63 W	107					
G	Maple	12	S 13 E	85					
H	B Oak	12	N 1 E	290					
G & H	stones set no. undressed								
I	stone set								

G-12

Run by the true meridian. Magnetic variation \_\_\_\_\_ degrees \_\_\_\_\_ minutes W.  
 Surveyed the \_\_\_\_\_ day of \_\_\_\_\_ 1891 by  
H. J. Stiles  
 County Surveyor of Ingham County, Michigan.

Field notes

Suc. 84

43