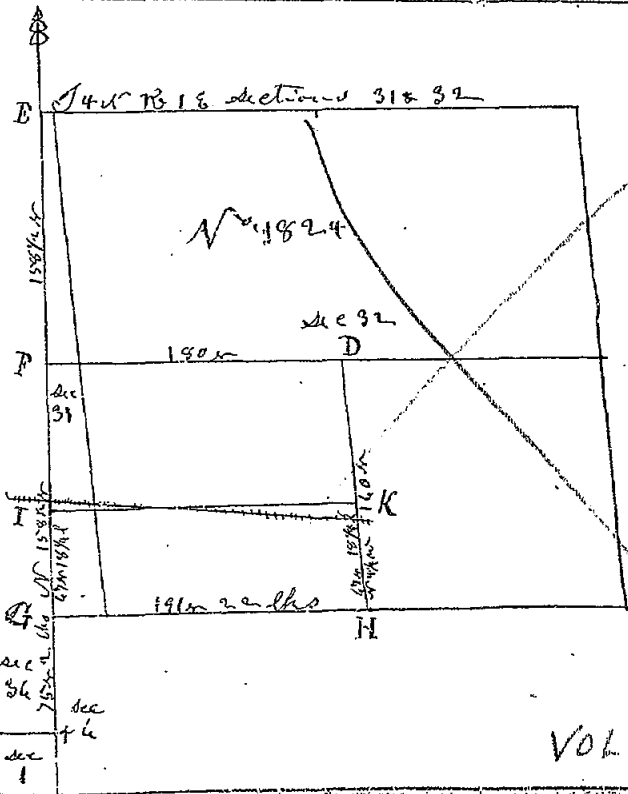
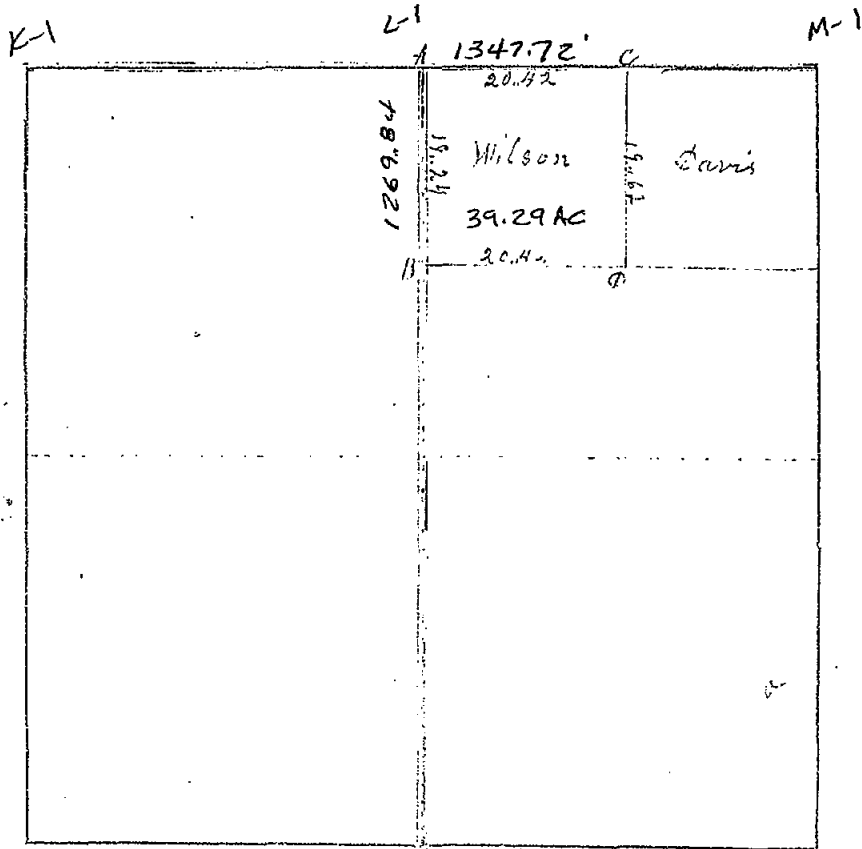


T 24 N W VEVA Sec 1



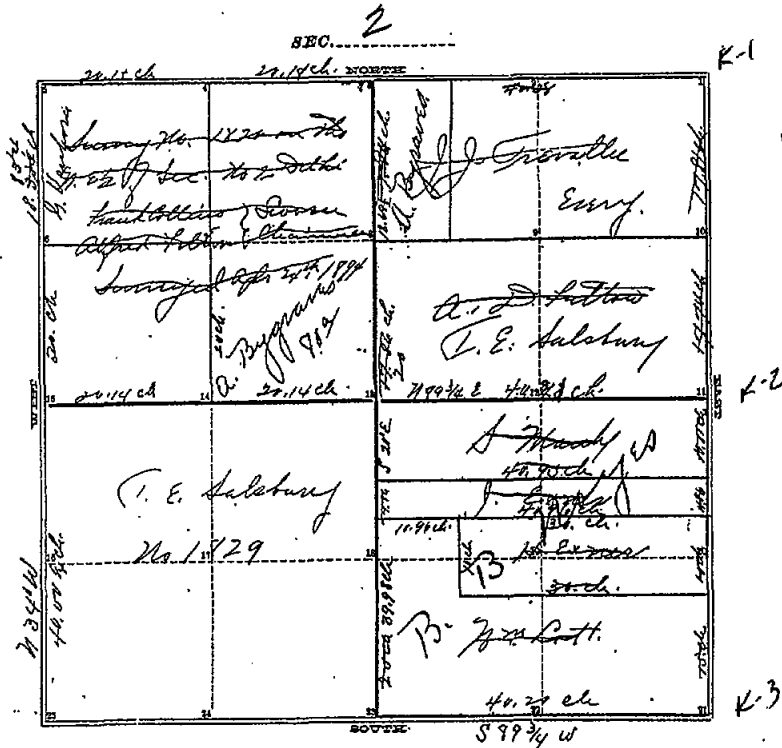
- E Sublt. Thom 5<sup>th</sup> N 31 E 62 lbs
- Pulverm 8<sup>th</sup> S 15 1/2 E 140 --
- F Elm 14<sup>th</sup> S 70 1/2 W 162 --
- "        "        "        "        S 42 W 486 --
- D Elm 4<sup>th</sup> S 56 1/2 E 46 --
- "        "        "        "        W 25 1/2 E 70 1/2 --
- K Elm 14<sup>th</sup> N 79 E 97 lbs
- "        "        "        "        S 38 E 92 --
- I S.E. C. of Home 569 ac
- "        "        "        "        N 75 1/4 W 1022 --
- G Elm 12<sup>th</sup> S 42 E 87 lbs
- H Ranch 12<sup>th</sup> S 44 W 5 lbs
- "        "        "        "        S 28 E 14 --
- "        "        "        "        S 79 E 94 --
- "        "        "        "        W 82 1/4 W 302 --
- "        "        "        "        S 2 E 410 --

Survey & Recorded by Wm O  
 June 13<sup>th</sup> 1894 by Wm O. Rayner  
 Robbin B. Rayner & William  
 W. Rayner Surveyors



COUNTY SURVEYOR'S RECORD,

TOWN Una NORTH, RANGE One West, MERIDIAN OF MICHIGAN.



TOWN \_\_\_\_\_ NORTH, RANGE \_\_\_\_\_, MERIDIAN OF MICHIGAN.

- 1
  - 2
  - 3 Post File Elm 28 7 70 W 136 3/4
  - 4 Post File Cherry 4 5 5 3/4 W 2 5 1/2
  - 5 Post File Cherry 6 5 2 3/4 W 4 9
  - 6 Loc. Buckland 10 3 3 1/2 E 5 3/4
  - 7 Post No. 1822 on 7th 12 7 13 3/4 W 14 4 1/2
  - 8 Carberry Sugar 14 7 5 1/2 E 23 1/2
  - 9 Post No. 1823 on 2nd 36 5 2 1/2 W 57 1/2
  - 10 Post No. 1824 on 3rd 19 7 8 3/4 W 4 3
  - 11 Post No. 1825 on 4th 6 5 5 0 E 13
  - 12
  - 13
  - 14
  - 15
  - 16
  - 17
  - 18
  - 19
  - 20
  - 21 O.P. Sugar 6 7 2 7 1/2 W 11 1/2
  - 22 Sugar 10 2 5 1 3/4 E 5 3 1/2
  - 23 Sugar 6 3 2 1 1/2 W 4 9 1/2
  - 24 Sugar 7 1 5 E 2 9
  - 25 Sugar 4 2 5 3 1/2 E 7 5 1/2
  - 26 Sugar 10 5 1 W 5 2
- 106 3, (2) 224 (246)

INGHAM COUNTY, MICHIGAN.

246

TOWN Two North, RANGE One West, MERIDIAN OF MICHIGAN.

Survey of a portion of section No 2 of Twp. Made July 19, 20, & 23 1895 for T. E. Saltsburg and others

The lines, bearings, and measurements are shown by the accompanying plat and witnesses were made as given below  
(See below Plat)

The corners (5), (4), & (3) was located from ~~posts~~ on the south line of the S.W. 1/4 of Section 35 Alcedon (Survey No 1586) all of which old posts were found and identified by the witnesses (3) being placed 91 links west from the Alcedon post, (4) 95 links and (5) 100 links west

(5) was located from survey No 1176 and old post found (11), (21), old post found) were set by Co. Linsey or Brown in survey for highway, and (21) was tested in the present survey by lot- and to posts of the south line of Sec. 1 and found to be correct. (22) was set by Drake and (23) was located by present survey from (21) & (22) by measurement to line. Marks of and old stake were found in subsoil about 6 inches west of present stake. (15) was established in transect line from (25) to (3) and by measurement marks of an old stake was found in subsoil 18 in north and 4 in east of present stake.

Wm. Baker & L. R. Peck Surveyors

Mag. Var 0° Surveyed July 19<sup>th</sup>, 20<sup>th</sup> & 23<sup>rd</sup> 1895

Recorded July 25<sup>th</sup> 1895 by

H. A. Rowe  
Co. Surveyor.

4000 ch No. 1475 F. S. Van Riper 24.01 No. 1479 Wm. Collins 40.04 No. 1480 J. G. Collier 40.29 No. 1481 W. S. Ewing 40.29	4000 ch 130.12 No. 1482 S. R. Colwell 80.57	589°E 20.150 ch No. 1476 T. B. Irish 81.17 589°E 20.20 ch No. 1483 W. B. Huntley 80.93	10.894 No. 1477 S. M. Doyle 40.58 10.894 No. 1478 S. M. Doyle 40.58 10.894 No. 1484 W. B. Harris 80.93
---	---	---	---

ALAMEDA TWP.

TOWN \_\_\_\_\_ NORTH, RANGE \_\_\_\_\_, MERIDIAN OF MICHIGAN.

- 1
- 2
- 3
- 4
- 5
- 6
- 7
- 8
- 9
- 10
- 11
- 12
- 13
- 14
- 15
- 16
- 17
- 18
- 19
- 20

24  
26

INGHAM COUNTY, MICHIGAN.

TOWN North, RANGE One West, MERIDIAN OF MICHIGAN.

Survey of section No Twenty six in Township No Three North Range No One West as represented by the accompanying plat (the scale of which is 1/2 chain to one mile); in which plat the numbers of the corners, the numbers of acres owned by each, the bearings and distances of the lines and the letters of reference to the lines and corners are respectively given.

The corners are described as follows.

- (1) a post from which the N.E. Cor. of S. House bears 737 1/2 W 238 1/2 links
- " " " " a Oak 10 in. diam. " 559 1/2 E 92 " "
- (14) " " " " No Mark for corner
- (2) " stone " " top of Rock 4 x 5 lbs and apple 8 in " 711 1/4 W 27 1/2 " "
- (26) " " " " top of granite rock 7 lbs " 872 1/2 E 142 1/2 " "
- (11) " " " " a Maple 12 in. " 735 1/2 W 61 " "
- " " " " an apple 5 " " 534 1/2 E 43 1/2 " "
- (17) " " " " a Sugar 8 " " 592 1/4 W 4 " "
- 27 " " " " Sugar 7 " " 7022 W 24 " "
- " " " " Sugar 10 " " 530 1/2 E 74 " "
- (12) " " " " Sugar 12 " " 862 1/4 W 36 " "
- " " " " R. Oak 16 " " 703 W 42 1/2 " "
- " " " " No Oak 9 " " 702 3/4 W 28 " "
- (13) " " " " Sugar 20 " " 743 W 31 " "
- " " " " Sugar 20 " " 705 1/2 E 29 " "
- (14) " " " " R. Walnut 36 " " 589 E 38 1/2 " "
- (15) " " " " an apple 4 " " 860 1/2 E 68 " "
- (16) " " " " a Sugar 6 " " 720 1/4 W 28 " "
- (17) " " " " an Elm 25 " " 86 W 10 " "
- (24) " " " " an R. Elm 6 " " 738 E 75 1/4 " "
- (25) " stone Corner
- (28) a post " " a Cypress 7 1/2 " " 713 1/4 W 101 " "
- (22) " stone " " a Chestnut 3 " " 866 E 64 " "
- (21) " " " " corner
- (7) " post from " a S. W. Oak 36 " " 81 1/2 E 45 " "
- (6) " " " " a Sugar 4 " " 543 E 43 " "

Run by the true Meridian Mag Van 1057-8 Surveyed & Recorded June 12, 1876 by T. J. Brown, Dep. Com. Survey, Ingham Co. Mich.

At its corner (15) the nearest quarter post I found the old stakes by surveying from the center of section stubby give East to the quarter post finding it <sup>post</sup> within any one foot of the point measured to, and is a little south and west from the one made by Mr. Brown. Set a stone and crochery <sup>post</sup> a sugar 7 in diam bears 715 1/2 E 132 links; then corrected <sup>post</sup> 7 1/3 for Sugar 22 in diam bears 737 1/2 W 25 1/2 lbs + Beech to 862 1/4 W 24 1/2 lbs

Surveyed Apr 20 1880 by  
A. P. Drake Co. Surv.