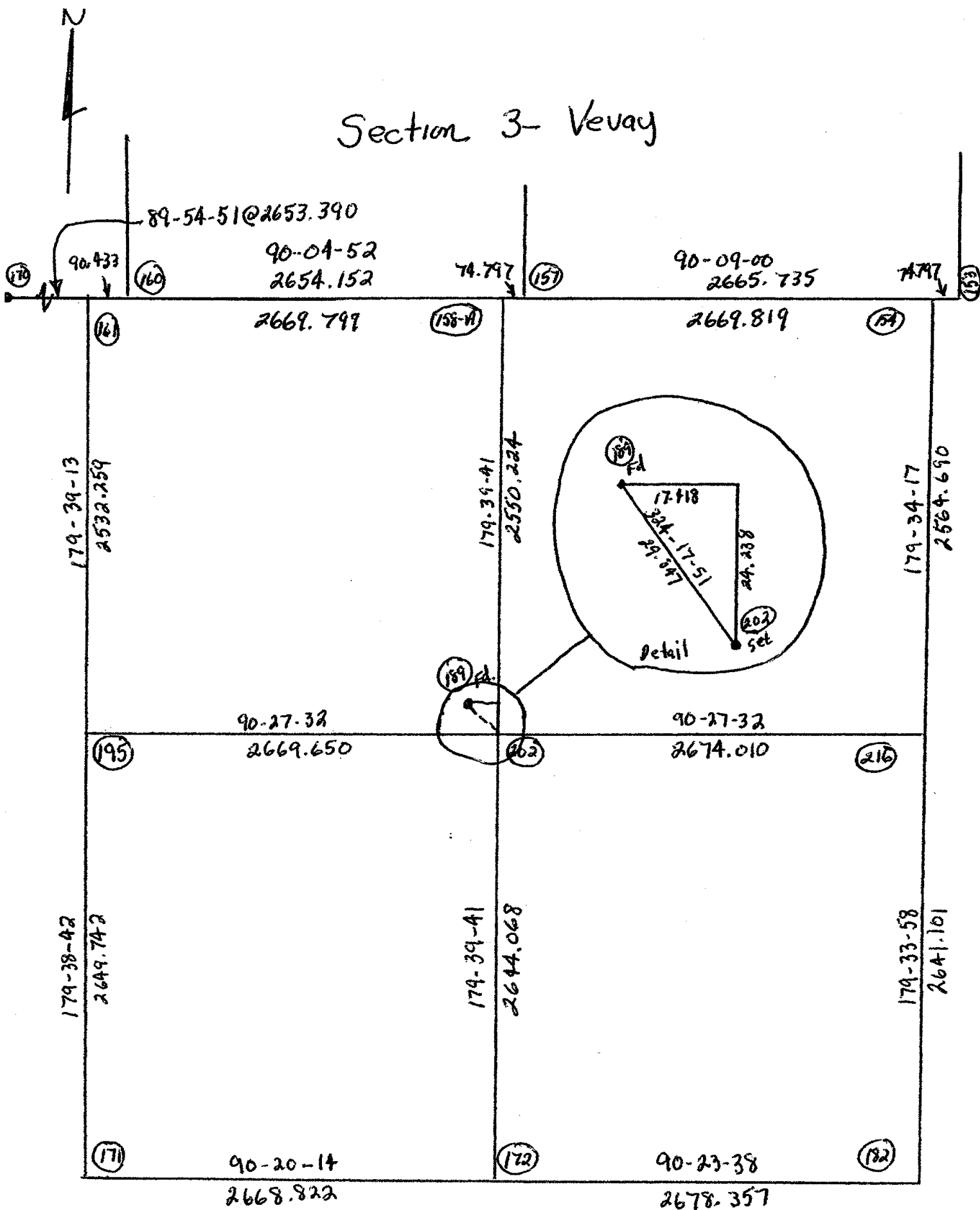
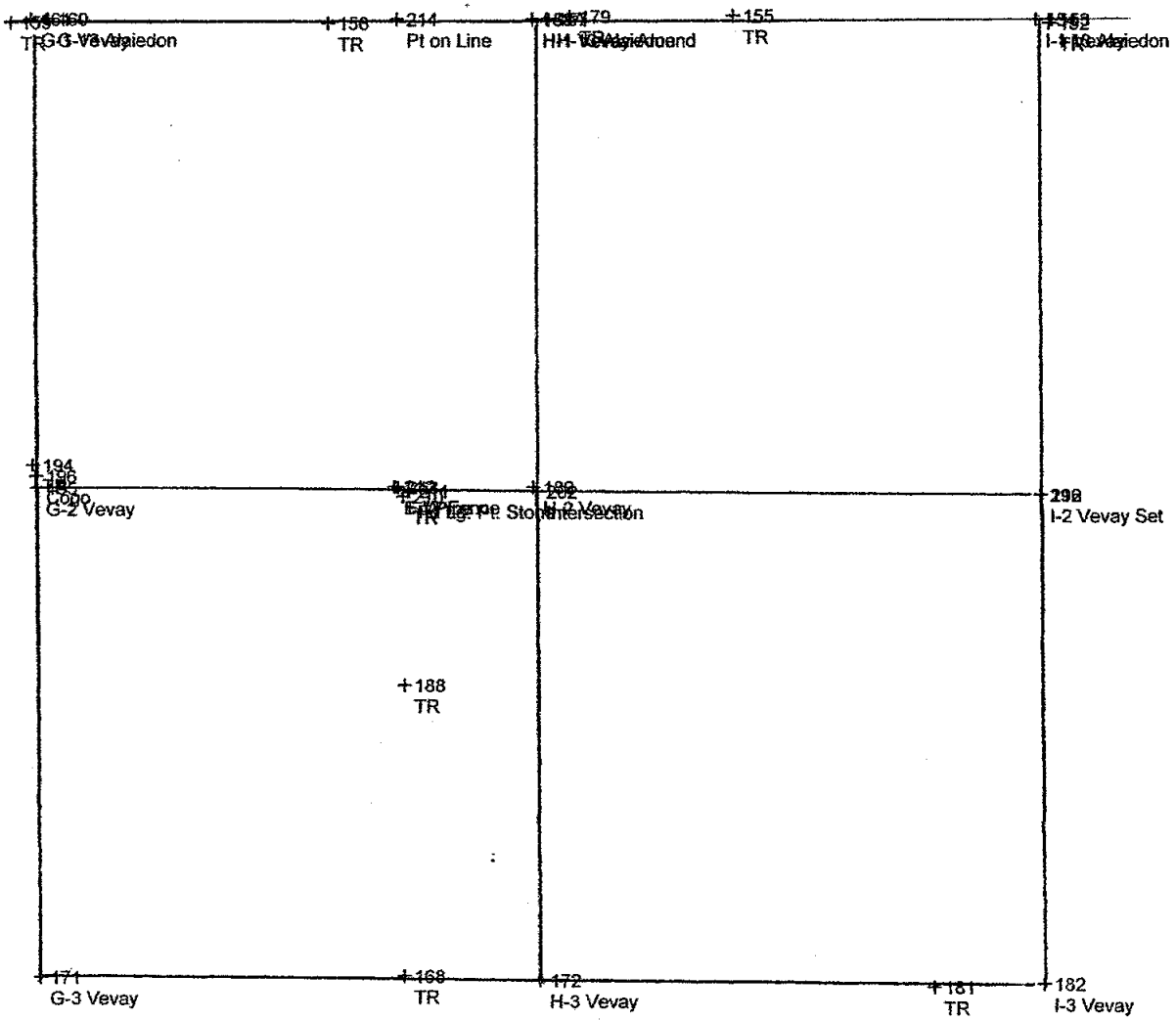


# Section 3- Vevay





+177  
1/8 Cor



Sec 3 - Vevay

1,000 feet

## Coordinate Report

<u>Pt Name</u>	<u>Northing</u>	<u>Easting</u>	<u>Desc.</u>
10V	12,129.208	9,383.788	TR
11V	12,151.169	6,735.187	TR
126V	18,468.803	6,740.036	TR
127V	17,426.920	6,723.811	L-2 Vevay
128V	14,788.072	6,727.344	L-3 Vevay
129V	14,777.135	8,371.838	TR
130V	12,154.122	6,728.764	TR
158A	20,037.501	-3,953.863	H-1 Vevay-Amend
6V	17,377.589	9,397.524	M-2 Vevay
9V	17,426.836	6,724.032	TR
1	20,000.000	5,000.000	TP
2	20,599.092	4,077.127	TP
3	20,033.764	8,533.285	TR
4	20,018.421	9,397.515	M-13
5	20,037.140	6,719.648	TR
6	20,021.845	6,747.092	L-13
7	20,018.422	6,720.779	L-1
8	20,015.907	4,090.427	K-13 Al.
9	22,683.772	4,084.798	K-12 Al.
10	24,016.356	4,068.962	TR
11	25,346.870	4,074.568	K-11 Al.
12	25,329.746	6,729.456	L-11 Al.
13	25,338.187	7,262.095	TR
14	25,304.471	9,397.421	M-11 Al.
15	27,142.316	4,085.157	TR
16	28,009.868	4,067.064	K-10
17	30,672.727	4,059.637	K-9
18	20,018.447	6,746.925	True L-13
19	22,630.102	9,377.673	TR
20	22,659.149	9,398.526	M-12
21	33,329.569	4,050.865	K-8
22	30,656.694	5,862.729	TR
23	35,986.273	4,042.093	K-7
24	35,937.919	5,434.774	TR
25	35,924.116	6,695.047	L-7
26	35,847.033	9,348.610	M-7
27	30,627.020	6,725.199	L-9
28	30,581.811	9,381.389	M-9
29	30,574.263	9,390.995	TR
30	32,960.524	9,367.092	TR
31	29,257.359	9,362.873	TR
32	33,210.934	9,365.713	M-08
33	35,847.559	9,348.742	M-07
34	28,266.417	9,417.244	TR
35	28,209.350	9,389.286	TR
36	28,066.038	9,397.312	TR
37	27,949.389	9,396.508	M-10
38	22,505.022	6,415.153	TR
39	22,672.810	6,737.498	L-12
40	22,671.473	6,738.292	Intersection
41	27,979.674	6,727.329	Intersection
42	26,816.178	6,550.920	TR
43	27,609.074	6,660.865	TR
44	27,974.605	6,726.906	L-10
99	12,154.141	6,735.172	TR
103	20,038.641	1,997.071	TR
104	18,783.781	4,056.212	TR
105	20,015.978	4,037.543	K-1
106	20,023.030	1,446.205	J-13
107	17,476.094	4,049.831	K-2
108	28,479.030	9,393.465	possible corner
109	28,480.332	9,418.511	possible rebar
110	28,480.658	9,419.403	Fd Boss B+C

111	27,951.039	9,396.498	possible corner
112	27,968.172	9,726.053	possible rebar
113	28,064.291	9,725.501	possible rebar
114	28,064.757	9,725.955	Fd Boss B+C
115	28,048.783	9,421.454	Intersection
116	28,350.892	9,831.327	Intersection
117	28,047.445	9,395.944	Intersection
118	28,321.444	9,394.370	Intersection
119	33,270.214	6,710.154	inter. 1/4-1/4
120	34,419.347	9,367.298	TR
121	35,905.943	7,973.243	TR
122	33,268.030	6,710.837	L-08
123	35,924.064	6,695.032	L-7
124	35,847.498	9,348.731	M-07
125	32,131.647	9,362.405	A-9 Wheat
126	32,131.766	9,372.146	Intersection
127	27,951.181	9,397.178	Calc M-10
128	27,974.355	6,727.007	Calc L-10
129	28,479.310	9,393.463	Intersection
130	27,951.014	9,421.918	Cogo
131	14,818.763	5,591.879	TR
132	14,749.983	9,389.176	M-3 Vevay
133	14,809.063	4,285.335	TR
134	14,819.767	4,056.085	K-3 Vevay
135	12,589.396	4,052.944	TR
136	12,173.288	4,067.453	TR
137	11,139.748	4,087.108	TR
138	10,404.672	4,063.644	TR
139	9,524.505	4,080.042	TR
140	9,501.531	6,743.068	TR
141	8,814.408	6,734.937	TR
142	7,515.729	6,758.318	TR
143	7,464.139	7,335.839	TR
144	6,601.927	6,736.155	TR
145	6,857.121	6,746.171	TR
146	5,899.804	6,753.608	TR
147	5,049.436	6,730.945	TR
148	4,208.941	6,747.594	TR
149	20,010.785	-475.633	TR
150	20,023.211	1,386.158	J-1 Vevay
151	19,954.937	1,325.018	TR
152	20,012.485	-1,215.299	TR
153	20,030.413	-1,213.352	I-13 Alaiedon
154	20,030.529	-1,284.050	I-1 Vevay
155	20,055.404	-2,891.568	TR
156	20,015.855	-5,038.933	TR
157	20,037.396	-3,879.077	H-13 Alaiedon
158	20,036.136	-3,953.864	H-1 Vevav
159	20,022.653	-6,730.394	TR
160	20,041.152	-6,533.226	G-13 Alaiedon
161	20,040.915	-6,623.659	G-1 Vevay
162	25,348.700	1,453.768	J-11 Al.-Void
163	25,339.018	-1,160.244	I-11 Al.-Void
164	24,012.374	-1,181.889	Misc. #7-Void
165	22,685.901	-1,202.907	I-12 Al.-Void
166	25,344.076	-3,898.819	H-11 Al.-Void
167	25,348.920	-6,548.645	G-11 Al.-Void
168	14,866.094	-4,641.670	TR
169	20,707.946	-9,198.043	TR
170	20,037.175	-9,186.614	F-13 Alaiedon
171	14,859.012	-6,591.938	G-3 Vevay
172	14,843.299	-3,923.162	H-3 Vevay
173	22,314.606	-9,210.424	TR
174	23,350.652	-9,219.445	TR
175	25,349.530	-6,549.070	G-11 Alaiedon Ck
176	21,815.956	-1,194.493	TR
177	21,357.779	-1,208.601	1/8 Cor

178	22,685.781	-1,204.178	I-12 Alaied Ck
179	20,051.008	-3,756.544	TR
180	22,652.846	-3,863.249	TR
181	14,806.205	-1,829.507	TR
182	14,824.886	-1,244.868	I-3 Vevay
183	14,838.349	16.899	TR
184	14,814.763	2,498.346	TR
185	15,556.921	684.531	TR
186	14,826.699	1,401.864	J-3 Vevay
187	14,820.114	4,056.191	K-3 Vevay CK
188	16,441.577	-4,639.841	TR
189	17,511.559	-3,956.209	H-2 Vevay
190	17,399.046	1,361.094	TR
191	17,480.286	1,392.546	J-2 Vevay
192	17,466.332	-1,264.744	I-2 Vevay Set
193	17,471.003	1,393.867	Intersection
194	17,632.963	-6,626.499	TR
195	17,508.702	-6,608.355	G-2 Vevay
196	17,573.701	-6,608.748	Cogo
197	25,338.945	-1,161.019	I-11 Alaiedon
198	25,353.530	-505.944	TR
199	25,317.130	-1,670.932	TR
200	25,348.596	1,452.986	J-11 Alaiedon
201	25,343.922	-3,899.552	H-11 Alaiedon
202	17,487.321	-3,938.791	Intersection
203	22,926.554	-4,525.832	TR
204	22,675.235	-4,397.481	Fenceline
205	23,006.203	-5,880.163	Tk
206	22,925.628	-6,569.294	TR
207	22,689.026	-6,546.607	G-12 Alaiedon
208	22,687.416	-3,889.300	Intersection
209	22,687.427	-3,889.298	H-12 Al.-Set
210	17,461.497	-4,649.239	TR
211	17,490.846	-4,619.273	Fd Lg. Pt. Stone
212	17,514.929	-4,691.749	E-W Fence
213	17,511.774	-4,676.158	Fd Pipe
214	20,038.422	-4,673.862	Pt on Line
215	17,402.753	-454.181	TR
216	17,465.911	-1,264.867	I-2 Vevay Set
217	22,592.013	982.775	TR
218	22,684.548	1,449.133	Fd 1-1/2"St.Post
219	22,684.778	1,449.590	Intersection
220	22,684.747	1,449.266	J-12 Al. Set