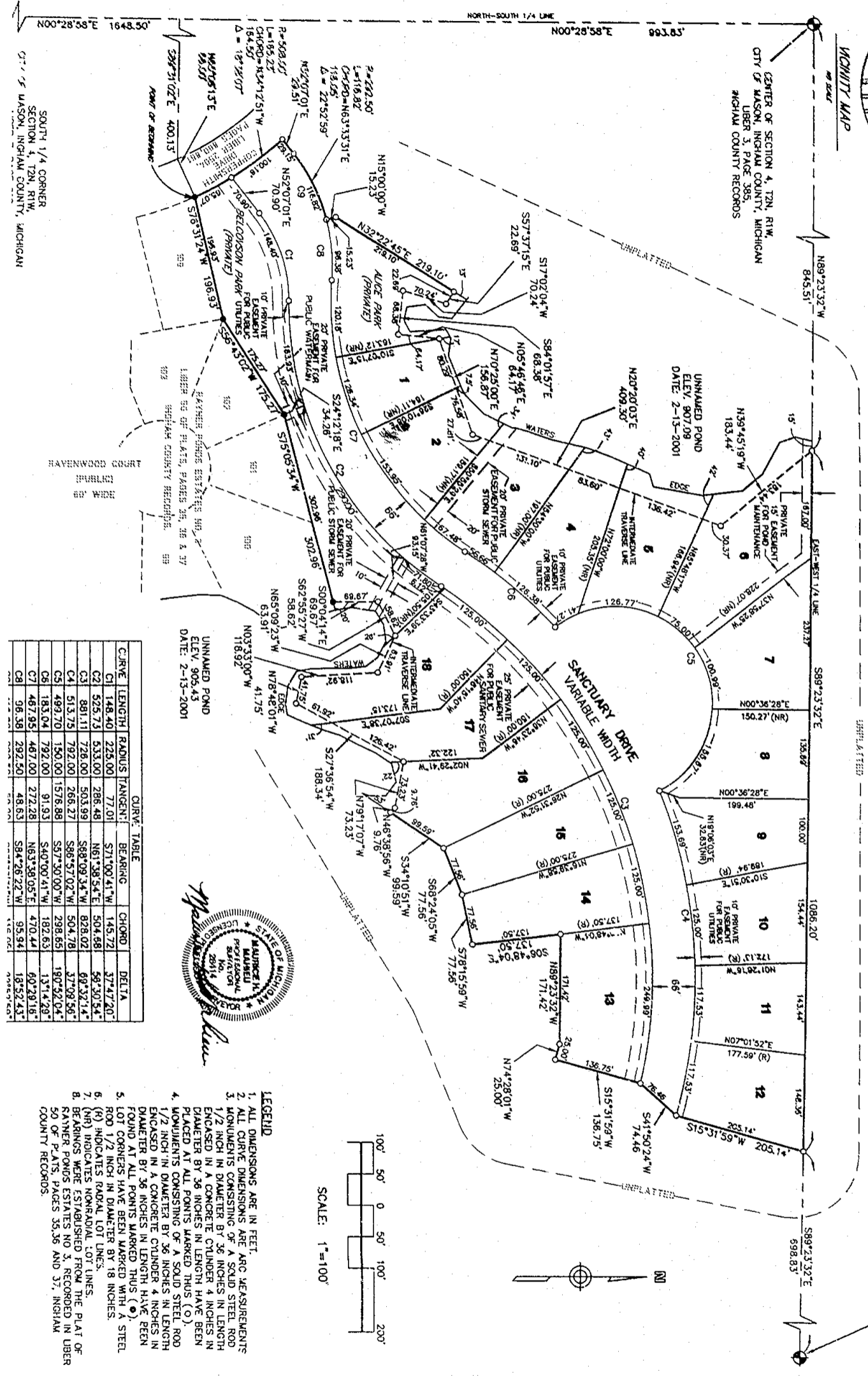


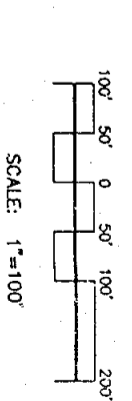
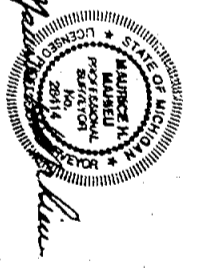
RAYNER PONDS SANCTUARY

A SUBDIVISION OF PART THE SOUTHEAST 1/4 OF SECTION 4, T2N, R1W, CITY OF MASON, INGHAM COUNTY, MICHIGAN

EAST 1/4 CORNER
SECTION 4, T2N, R1W,
CITY OF MASON, INGHAM COUNTY, MICHIGAN
LIBER 3, PAGE 381,
INGHAM COUNTY RECORDS



CURVE	LENGTH	RADIUS	TANGENT	BEARING	CHORD	DELTA
C1	148.40	225.00	77.01	S71°00'41"W	145.72	37°47'20"
C2	525.73	533.00	286.48	N61°38'54"E	504.88	69°30'54"
C3	891.11	726.00	303.99	S88°09'34"W	828.02	67°32'14"
C4	513.75	792.00	266.27	S88°57'02"W	504.78	37°09'56"
C5	489.70	150.00	1576.88	S57°30'00"W	298.85	180°42'04"
C6	183.04	792.00	91.93	S40°00'41"W	182.63	13°14'29"
C7	487.95	487.00	272.28	N63°38'05"E	470.44	60°29'16"
C8	96.38	292.50	48.63	S84°26'22"W	95.94	18°52'43"



- LEGEND**
1. ALL DIMENSIONS ARE IN FEET.
 2. ALL CURVE DIMENSIONS ARE ARC MEASUREMENTS
 3. MONUMENTS CONSISTING OF A SOLID STEEL ROD 1/2 INCH IN DIAMETER BY 36 INCHES IN LENGTH ENCASED IN A CONCRETE CYLINDER 4 INCHES IN DIAMETER BY 36 INCHES IN LENGTH HAVE BEEN FOUND AT ALL POINTS MARKED WITH A STEEL
 4. MONUMENTS CONSISTING OF A SOLID STEEL ROD 1/2 INCH IN DIAMETER BY 36 INCHES IN LENGTH ENCASED IN A CONCRETE CYLINDER 4 INCHES IN DIAMETER BY 36 INCHES IN LENGTH HAVE BEEN FOUND AT ALL POINTS MARKED WITH A STEEL
 5. LOT CORNERS HAVE BEEN MARKED WITH A STEEL ROD 1/2 INCH IN DIAMETER BY 18 INCHES.
 6. (NB) INDICATES NONRADIAL LOT LINES.
 7. BEARINGS WERE ESTABLISHED FROM THE PLAT OF RAYNER PONDS ESTABLISHED NO. 3, RECORDED IN LIBER 50 OF PLATS, PAGES 38 AND 37, INGHAM COUNTY RECORDS.

SOUTH 1/4 CORNER
SECTION 4, T2N, R1W,
CITY OF MASON, INGHAM COUNTY, MICHIGAN

CENTER OF SECTION 4, T2N, R1W,
CITY OF MASON, INGHAM COUNTY, MICHIGAN
LIBER 3, PAGE 385,
INGHAM COUNTY RECORDS

INCINITY MAP

SHEET 2 OF 2